

Patch Cords

Allen Tel Products, Inc. offers a complete line of high performance Patch Cords for copper and fiber applications. Our modular products also include telephone cordage, plugs and crimp tools.

- Category 3, 5E and 6 Patch Cords
- Fiber optic cable assemblies
- Connectorized Cables
- Telephone Line and Handset cords
- Modular Plugs
- Crimping Tools

Connectivity products demand flexibility, speed and reliability. Allen Tel meets this demand with high quality, dependable structured cabling products.

Category 6 Patch Cords	Page 42	Handset Cord	Page 46
Category 5e Patch Cords.....	Page 42	Modular Extension Cord	Page 46
Category 5e Crossover Cable	Page 43	Bulk Line Cordage	Page 46
Connectorized Cables.....	Page 43	Modular Category 3 Plugs for Stranded Wire.....	Page 47
Fiber Optic Cable Assemblies.....	Page 44	Modular Plugs for Solid Wire (Smoky Grey Color).....	Page 47
Category 3 Data Cords and Cable	Page 45	Crimping Tools.....	Page 48
Category 3 Bulk Cable.....	Page 45		
Line Cord	Page 45		



Patch Cords



Category 6 Patch Cords

- Independent performance certification through Graybar’s VIP2000 program
- Exceeds TIA/EIA Category 6 standards
- Snagless boots
- Variety of colors

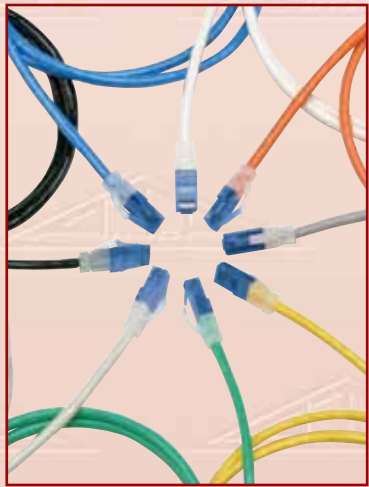


Part Number	Part Description	Std. Pkg. Qty.	Std. Ctn. Qty.
AT1601-XX	Cat6 Patch Cord 1ft	25	500
AT1602-XX	Cat6 Patch Cord 2ft	15	210
AT1603-XX	Cat6 Patch Cord 3ft	15	210
AT1604-XX	Cat6 Patch Cord 4ft	15	180
AT1605-XX	Cat6 Patch Cord 5ft	15	180
AT1607-XX	Cat6 Patch Cord 7ft	15	150
AT1610-XX	Cat6 Patch Cord 10ft	15	100
AT1614-XX	Cat6 Patch Cord 14ft	10	80
AT1615-XX	Cat6 Patch Cord 15ft	10	80
AT1618-XX	Cat6 Patch Cord 18ft	1	60
AT1620-XX	Cat6 Patch Cord 20ft	1	60
AT1625-XX	Cat6 Patch Cord 25ft	1	40
AT1650-XX	Cat6 Patch Cord 50ft	1	30
AT16100-XX	Cat6 Patch Cord 100ft	1	15

XX Colors: WH-White, YL-Yellow, BU-Blue, RD-Red, GY-Grey, I-Ivory, BK-Black, GN-Green, OR-Orange, P-Purple

Category 5e Patch Cords

- Independent performance certification through Graybar’s VIP1000 program
- Exceeds TIA/EIA Category 5e standard
- Snagless boots
- Variety of colors



Part Number	Part Description	Std. Pkg. Qty.	Std. Ctn. Qty.
AT1501EV-XX	Cat5e Patch Cord 1ft	25	500
AT1502EV-XX	Cat5e Patch Cord 2 ft	25	400
AT1503EV-XX	Cat5e Patch Cord 3 ft	25	300
AT1505EV-XX	Cat5e Patch Cord 5 ft	25	250
AT1507EV-XX	Cat5e Patch Cord 7 ft	25	200
AT1510EV-XX	Cat5e Patch Cord 10 ft	25	150
AT1514EV-XX	Cat5e Patch Cord 14 ft	25	100
AT1518EV-XX	Cat5e Patch Cord 18 ft	1	80
AT1525EV-XX	Cat5e Patch Cord 25 ft	1	65
AT1550EV-XX	Cat5e Patch Cord 50 ft	1	30
AT15100EV-XX	Cat5e Patch Cord 100 ft	1	15

XX Colors: WH-White, YL-Yellow, BU-Blue, RD-Red, GY-Grey, I-Ivory, BK-Black, GN-Green, OR-Orange, P-Purple

Patch Cords

Category 5e Crossover Cable

- Ethernet crossover cable
- Red Category 5e UTP cable with yellow boots
- Special lengths and colors available



Part Number	Part Description	Std. Pkg. Qty.	Std. Ctn. Qty.
AT1503-REC	Red ethernet crossover cable 3 ft	25	300
AT1505-REC	Red ethernet crossover cable 5 ft	25	250
AT1507-REC	Red ethernet crossover cable 7 ft	25	200
AT1510-REC	Red ethernet crossover cable 10 ft	25	150
AT1514-REC	Red ethernet crossover cable 14 ft	25	100
AT1518-REC	Red ethernet crossover cable 18 ft	1	80
AT1525-REC	Red ethernet crossover cable 25 ft	1	65

Connectorized Cables

Allen Tel Products Inc. offers a complete line of plug-in connector cables. They are available in 25 pair with various plug, connector and length combinations.

- Conductors are 24 AWG bare solid annealed copper wire
- Polyvinyl chloride is used as insulation over the conductors. It is semi-rigid heat resistant and is resistant to abrasion and cold flow
- Fully color coded band marked with individual pairs twisted for ease of identification. The color band on each conductor matches body insulation color of matching conductor. Standard telephone industry color code is incorporated throughout
- Polyvinyl chloride grey jacket with nylon ripcord inserted between core and jacket for ease of jacket removal.

Electrical Characteristics

Frequency MHZ	Attenuation dB/100m	Next dB (worst pair)	Impedance Ohms
0.256	1.3	/	/
0.512	1.8	/	/
0.772	2.2	43	/
1.0	2.8	41	100±15
4.0	5.8	32	100±16
5.0	8.5	27	100±15
10.0	9.7	26	100±16
16.0	13.1	23	100±16



Part Number	Part Description	Std. Pkg. Qty.	Std. Ctn. Qty.
25-3-CC-XX-GY	Connector at both ends	1	1
25-3-CX-XX-GY	Connector at one end only	1	1
25-3-PC-XX-GY	Plug at one end, connector at one end	1	1
25-3-PP-XX-GY	Plug at both ends	1	1
25-3-PX-XX-GY	Plug at one end only	1	1

XX Length in Feet: 5, 10, 15, 20, 25, 30, 40, 50, 75, 100, 150, 200

Part Number	Part Description	Std. Pkg. Qty.	Std. Ctn. Qty.
25-3-PP-XX-180	Cable to panel, plug at each end	1	1
25-3-PX-XX-180	Cable to panel, plug at one end only	1	1

XX Length in Feet: 5, 10, 15, 20, 25, 30, 40, 50, 75, 100, 150, 200

Patch Cords



Fiber Optic Cable Assemblies



- Full line of high quality single mode and multimode fiber optic cable assemblies
- All cables are 100% tested for insertion loss and back reflection
- Test results come with each cable
- Insertion loss <0.2dB (single mode) <0.3dB (multimode)
- Typical back reflection <-55dB
- Available in industry standard lengths in meters



GB SC2 - D2 - 03

Connector to Connector Configurations

FC2	FC to FC
FCC	FC to SC
FCT	FC to ST
LC2	LC to LC
LCC	LC to SC
LCT	LC to ST
MF2	MTRJ Female to MTRJ Female
MFC	MTRJ Female to SC
MFL	MTRJ Female to LC
MFT	MTRJ Female to ST
MM2	MTRJ Male to MTRJ Male
MMC	MTRJ Male to SC
MMF	MTRJ Male to MTRJ Female
MMT	MTRJ Male to ST
SC2	SC to SC
ST2	ST to ST
STC	ST to SC

Length

01 - 1 Meter	08 - 8 Meter
02 - 2 Meter	09 - 9 Meter
03 - 3 Meter	10 - 10 Meter
04 - 4 Meter	15 - 15 Meter
05 - 5 Meter	20 - 20 Meter
06 - 6 Meter	25 - 25 Meter
07 - 7 Meter	30 - 30 Meter

Fiber

- 1 - Single Mode 9/125 (Yellow Jacket)
- 2 - Multi Mode 62.5/125 (Orange Jacket)
- 3 - Multi Mode (Only) 50/125 (Blue Jacket)

Cable Type

- S - Simplex
- D - Duplex

Ordering Example

GBSC2-D2-03
 SC to SC duplex 62.5/125 microns multimode - 3 Meters

Patch Cords

Category 3 Data Cords and Cable

- Designed for 16 Mbps UTP token ring network
- Data cords wired pin to pin with modular plugs on both ends
- UL Listed and CSA Listed



Electrical Characteristics

Requirement	256 KHz	512 KHz	772 KHz	1 Mhz	4 Mhz	10 Mhz	16 Mhz	20 Mhz
Attenuation (db/1000 Ft. at 20C)	3.4	4.6	5.7	6.5	13	22	27	31
NEXT (db/1000 Ft.)	N/A	N/A	58	56	47	41	38	36
Mutual Capacitance (at 1.0 KHz)	14.0 Pf/FT. (46PF/M)			DC Resistance: 28.6 Max per 1000 Ft. 200 C				
Impedance	At 1-25 Mhz			100 OHMS Nominal				



Part Number	Part Description	Std. Pkg. Qty.	Std. Ctn. Qty.
AT12XX-4C	6-position 4-conductor	1	1
AT12XX-6C	6-position 6-conductor	1	1
AT12XX-NK	8-position 8-conductor	1	1

XX Lengths: 01-1 ft, 03-3 ft, 05-5 ft, 07-7 ft, 10-10 ft, 15-15 ft, 25-25 ft

Note: Replace "NK" with "K" if keyed plugs are required

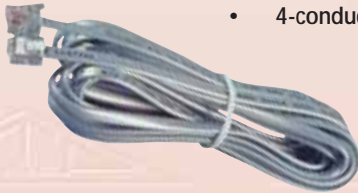
Category 3 Bulk Cable



Part Number	Part Description	Std. Pkg. Qty.	Std. Ctn. Qty.
AT4CRB	4-conductor bulk cable 1000 ft	1	1
AT6CRB	6-conductor bulk cable 1000 ft	1	1
AT8CRB	8-conductor bulk cable 1000 ft	1	1

Line Cord

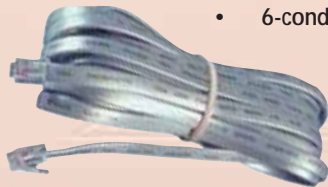
- 4-conductor, flat, satin silver line cord



Part Number	Part Description	Std. Pkg. Qty.	Std. Ctn. Qty.
AT407	Full modular line cord 7 ft	1	400
AT414	Full modular line cord 14 ft	1	200
AT425	Full modular line cord 25 ft	1	160

Line Cord

- 6-conductor, flat, satin silver line cord



Part Number	Part Description	Std. Pkg. Qty.	Std. Ctn. Qty.
AT607	Full modular line cord 7 ft	1	300
AT614	Full modular line cord 14 ft	1	150
AT625	Full modular line cord 25 ft	1	100

Line Cord

- 8-conductor, flat, satin silver line cord. Specify either "NK" – non-keyed or "K" – keyed



Part Number	Part Description	Std. Pkg. Qty.	Std. Ctn. Qty.
AT1007-NK or K	Full modular line cord 7 ft	1	250
AT1014-NK or K	Full modular line cord 14 ft	1	150
AT1025-NK or K	Full modular line cord 25 ft	1	100

Patch Cords



Line Cord

- 4-conductor, flat, satin silver line cord



Part Number	Part Description	Std. Pkg. Qty.	Std. Ctn. Qty.
AT307	1/4 modular line cord 7 ft	1	25
AT314	1/4 modular line cord 14 ft	1	25
AT325	1/4 modular line cord 25 ft	1	25

Handset Cord

- 4-conductor, retractile handset cord



Part Number	Part Description	Std. Pkg. Qty.	Std. Ctn. Qty.
AT806-XX	Full modular handset cord 6 ft	25	300
AT812-XX	Full modular handset cord 12 ft	25	150
AT825-XX	Full modular handset cord 25 ft	1	100

XX Colors: 00-Black, 09-Ivory, 13-Beige, 14-Grey, 15-White, 44-Ash, 45-Cocoa Brown, 47-Red

Handset Cord

- Spade ended flat, retractile handset cord



Part Number	Part Description	Std. Pkg. Qty.	Std. Ctn. Qty.
AT706SS-XX	Spade ended handset cord 6 ft	1	25
AT712SS-XX	Spade ended handset cord 12 ft	1	25
AT725SS-XX	Spade ended handset cord 25 ft	1	25

XX Colors: 00-Black, 09-Ivory, 13-Beige, 15-White, 44-Ash, 45-Cocoa Brown, 47-Red

Modular Extension Cords

- Flat modular extension 4-conductor line cord e/w duplex ivory jack



Part Number	Part Description	Std. Pkg. Qty.	Std. Ctn. Qty.
AT206-12	Modular duplex extension cord 12 ft	1	25
AT206-25	Modular duplex extension cord 25 ft	1	25

Modular Extension Cord

- Flat modular extension 4-conductor line cord e/w single ivory jack



Part Number	Part Description	Std. Pkg. Qty.	Std. Ctn. Qty.
AT207-12	Modular extension cord 12 ft	1	25
AT207-25	Modular extension cord 25 ft	1	25

Bulk Line Cordage

- Satin silver, flat line cord
- Conductors are 26 AWG, 7 strand bare copper wire
- PVC insulated

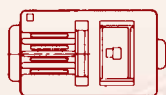


Part Number	Part Description	Std. Pkg. Qty.	Std. Ctn. Qty.
AT4CLC	4-conductor bulk line cordage 1000 ft	1	1
AT6CLC	6-conductor bulk line cordage 1000 ft	1	1
AT8CLC	8-conductor bulk line cordage 1000 ft	1	1

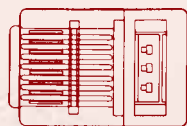
Patch Cords

Modular Category 3 Plugs for Stranded Wire

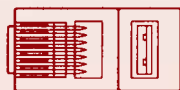
- Every Allen Tel Modular Plug is UL Listed and CSA Listed



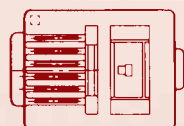
Part Number	Part Description	Std. Pkg. Qty.	Std. Ctn. Qty.
AT4X4	4-contact, 4-position plug for handset cords	100	1000
AT4X6	4-contact, 6-position plug for line cords	100	1000



Part Number	Part Description	Std. Pkg. Qty.	Std. Ctn. Qty.
AT8X8	8-contact, 8-position plug for line cords and data applications	100	1000
AT8X8K	Same as AT8X8 except keyed	100	1000



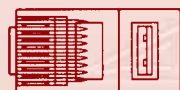
Part Number	Part Description	Std. Pkg. Qty.	Std. Ctn. Qty.
AT8X8RC	8-conductor, 8-position modular plug designed for round cordage such as AT8CRB	100	1000



Part Number	Part Description	Std. Pkg. Qty.	Std. Ctn. Qty.
AT6X6	6-contact, 6-position plug for line cords	100	1000



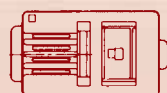
Part Number	Part Description	Std. Pkg. Qty.	Std. Ctn. Qty.
AT6X6DEC	6-contact, 6-position DEC plug for line cords	100	1000



Part Number	Part Description	Std. Pkg. Qty.	Std. Ctn. Qty.
AT10X10	10-contact, 10-position. Body size is the same as AT8X8	50	200

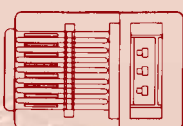
Modular Plugs for Solid Wire (Smoky Grey Color)

- Designed for flat cord
- UL Listed and CSA Listed



Part Number	Part Description	Std. Pkg. Qty.	Std. Ctn. Qty.
AT4X4SC-2224	4-contact, 4-position plug for 22/24GA solid wire	100	1000
AT4X6SC-2224	4-contact, 6-position plug for 22/24GA solid wire	100	1000
AT6X6SC-2224	6-contact, 6-position plug for 22/24GAG solid wire	100	1000
AT8X8SC-2224	8-contact, 8-position plug for 22/24GA solid wire	100	1000

- Designed for rounded cord
- UL Listed and CSA Listed



Part Number	Part Description	Std. Pkg. Qty.	Std. Ctn. Qty.
AT6X6RCSC-2224	6-contact, 6-position plug for round cord with solid 22ga or 24GA wire	100	1000
AT8X8RCSC-24	8-conductor plug for round cord with solid 24GA wire	100	1000

Patch Cords



Crimping Tool

- AT10 series of crimp tools are constructed of carbon steel and have a ratchet mechanism
- Designed for releasing at midcrimp when necessary



Part Number	Part Description	Std. Pkg. Qty.	Std. Ctn. Qty.
AT10A	AT10X10, 10-cond., 10-pos. plugs	1	1
AT10A-4	AT4X4, 4-cond., 4-pos. handset plugs	1	1
AT10A-6	AT4X6 and AT6X6 plugs	1	1
AT10A-8	AT8X8 and AT8X8K plugs	1	1
AT10A-DEC	AT6X6DEC plugs	1	1

Crimping Tool

- Installation of modular plugs on flat or round cords
- Includes a flat wire cutter, stripper and round station wire jacket stripper
- Steel body construction



Part Number	Part Description	Std. Pkg. Qty.	Std. Ctn. Qty.
AT570-4	AT4X4 plugs	1	1

Crimping Tool

- Multi-function
- Safety guard and locking device
- Built-in cutter and stripper



Part Number	Part Description	Std. Pkg. Qty.	Std. Ctn. Qty.
AT546	RJ-22(AT4X4 handset) and RJ-11(AT4X6,AT6X6)	1	1
AT568	RJ-11(AT4X6,AT6X6) and RJ-45 (AT8X8 and AT8X8K)	1	1
AT582	RJ-45(AT8X8,AT8X8K) and MMJ-RJ-11 (AT6X6DEC)	1	1
AT584	RJ-11(AT4X6,AT6X6) and MMJ-RJ-11(AT6X6DEC)	1	1
9701	Replacement cutting blades	1	1

Crimping Tool

- Carbon steel construction
- Ratchet mechanism
- Multi-function
- Ease of installation



Part Number	Part Description	Std. Pkg. Qty.	Std. Ctn. Qty.
AT680	RJ-11(AT4X6,AT6X6) and RJ-45(AT8X8,AT8X8K)	1	1
AT682	RJ-22(AT4X4 Handset) and RJ-11(AT4X6,AT6X6)	1	1
9702	Replacement cutting blades	1	1