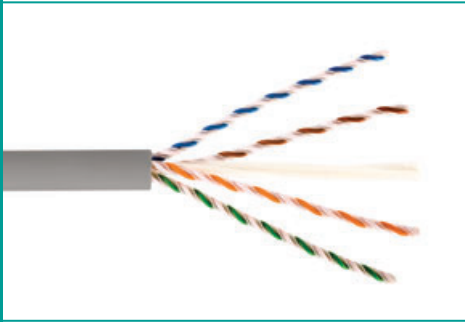


SYSTIMAX® GigaSPEED Xpress® Solution Guide

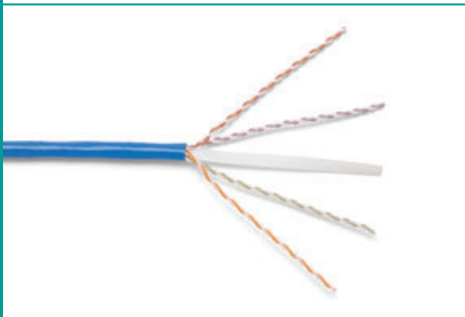


www.commscope.com

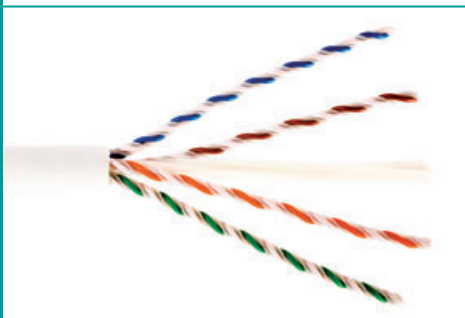
SYSTIMAX®
SOLUTIONS



1088 Non-Plenum 88 Series Cable



2088 Plenum 88 Series Cable



3088 LSZH 88 Series Cable

SYSTIMAX GigaSPEED Xpress 88 Series Cable

The saying goes that great things come in small packages. That is definitely the case when it comes to the SYSTIMAX GigaSPEED 88 Series Cables. As integral components of the SYSTIMAX GigaSPEED Xpress Solution, the new slim profile GigaSPEED 88 Series Cables are engineered to suppress unwanted Alien Crosstalk and deliver the 500MHz bandwidth required for 10GBASE-T applications in channels up to 60 meters in length – guaranteed.

So just how small are the GigaSPEED 88 Series Cables? In the following table, see how the GigaSPEED Xpress Solution provides the necessary density in horizontal and vertical pathways with the small and innovative design of the GigaSPEED Xpress 88 Series Cables.

Cable Type	Cable Diameter	Cable Weight	Cable Load @ 50% fill 6"x 6" frame vertical	Cable Load @ 50% fill 12"x 8" cable tray
1088 Non-plenum	0.245" (6.22 mm)	28.5 lbs./kft (42.4 kg/km)	382 cables 10.89 lbs/ft (16.2 kg/km)	1018 cables 29.0 lbs/ft (43.2 kg/km)
2088 Plenum	0.245" (6.22 mm)	37.5 lbs./kft (55.8 kg/km)	382 cables 14.33 lbs/ft (21.3 kg/km)	1018 cables 38.18 lbs/ft (56.8 kg/km)
3088 LSZH	0.245" (6.22 mm)	28.7 lbs./kft (42.7 kg/km)	382 cables 10.96 lbs/ft (16.3 kg/km)	1018 cables 29.22 lbs/ft (43.5 kg/km)

Because density matters in Data Centers, the 88 Series Cables are engineered to optimize space by size and design. The 88 Series Cables and the entire GigaSPEED Xpress Solution rely heavily on precision balance in the system design and only slightly on spacing to effectively manage Alien Crosstalk even in worst-case bundled conditions. In addition, the unique cable design provides Data Center designers with more options regarding cable fill guidelines and ratios. While traditional cable designs are recommended for only 40% fill ratios, the strength of this unique cable design allows users to load cable into cable management pathways at a fill ratio of up to 50% with full PoE and Alien Crosstalk capabilities or 9"(230 mm) deep without altering the performance of the cables due to crushing.

Small, agile, and 10GBASE-T support guaranteed. Great things do come in small packages like the new GigaSPEED 88 Series Cables.



ORDERING INFORMATION:

Material ID	Product Number	Pair Count	Length	Package
Non-Plenum				
760142497	1088B BL 4/23 R1000	4	1,000ft (305m)	Reel
760142505	1088B GR 4/23 R1000	4	1,000ft (305m)	Reel
760142513	1088B LB 4/23 R1000	4	1,000ft (305m)	Reel
760142521	1088B RD 4/23 R1000	4	1,000ft (305m)	Reel
760142539	1088B SG 4/23 R1000	4	1,000ft (305m)	Reel
760142547	1088B SL 4/23 R1000	4	1,000ft (305m)	Reel
760142554	1088B SL 4/23 R3000	4	3,000ft (914m)	Reel
760142562	1088B WH 4/23 R1000	4	1,000ft (305m)	Reel
760142570	1088B YL 4/23 R1000	4	1,000ft (305m)	Reel
Plenum				
760142588	2088B BL 4/23 R1000	4	1,000ft (305m)	Reel
760142596	2088B BL 4/23 R3000	4	3,000ft (914m)	Reel
760142604	2088B OR 4/23 R1000	4	1,000ft (305m)	Reel
760142612	2088B RD 4/23 R1000	4	1,000ft (305m)	Reel
760142620	2088B SL 4/23 R1000	4	1,000ft (305m)	Reel
760142638	2088B WH 4/23 R1000	4	1,000ft (305m)	Reel
760142646	2088B YL 4/23 R1000	4	1,000ft (305m)	Reel
LSZH				
760142653	3088B BL 4/23 R1000	4	1,000ft (305m)	Reel
760142661	3088B SL 4/23 R1000	4	1,000ft (305m)	Reel
760142679	3088B WH 4/23 R1000	4	1,000ft (305m)	Reel

Colors: BL=Blue, WH=White, SL=Slate, LB=Light Blue, RD=Red, YL=Yellow, GR=Green, SG=Spring Green

