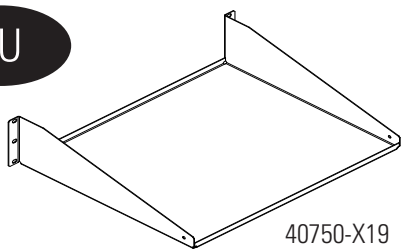
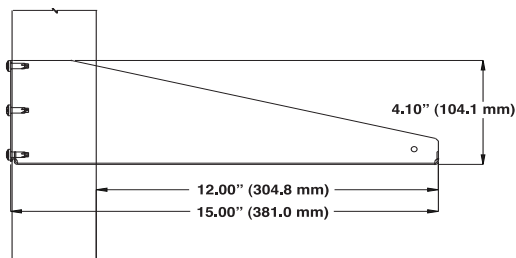


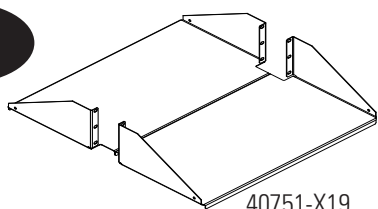
3U



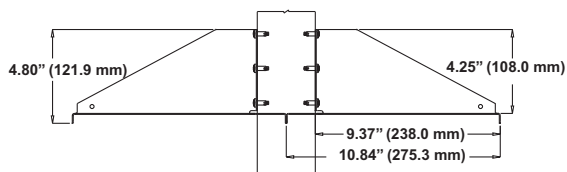
40750-X19



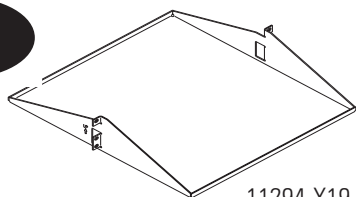
3U



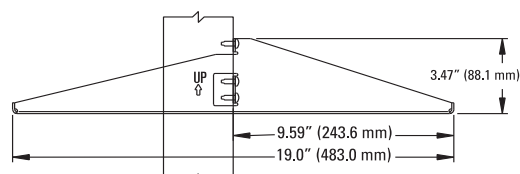
40751-X19



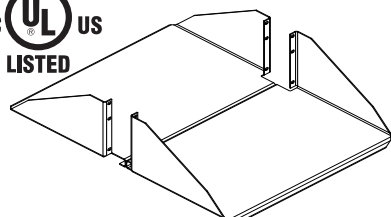
2U



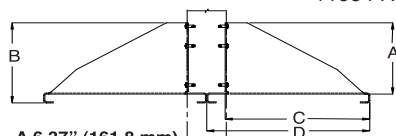
11294-X19



5U



11054-X19



A 6.37" (161.8 mm)  
B 7.16" (181.9 mm)  
C 11.53" (292.9 mm)  
D 13.00" (330.2 mm)

## Standard Single-Sided Steel Shelf

Economical rack or wall-mounted shelf for miscellaneous equipment. Made of cold-rolled steel and may be rack or wall-mounted. 19" rack-mountable, holds equipment up to 17.25"W x 14.75"D (438.2 mm x 374.7 mm). Sold two per shipping carton, supports up to 35 lb (15.9 kg).

## Standard Double-Sided Steel Shelf

An economical rack or wall-mounted shelf with twice the shelf space for centered loading and deeper equipment handling. Made of cold-rolled steel, this shelf mounts on double-sided racks only. 19" rack mountable, holds equipment up to 17.25"W x 21.50"D (438.2 mm x 546.1 mm) and supports up to 25 lb (11.3 kg) per side or 50 lb (22.7 kg) total.

## 19"D (480 mm) Low Profile Shelf

Reduced height design saves on valuable rack space. Mounts to either front or back of rack channel face. Mounting hardware not included. 19" version holds equipment up to 17.25"W x 18.82"D (438.2 mm x 478.0 mm), 23" version holds equipment up to 21.25"W x 18.82"D (539.8 mm x 478.0 mm) Made of strong, lightweight aluminum, supports up to 40 lb (18.1 kg).

## 26"D (660 mm) Shelf

Extra deep design is convenient for mounting large equipment requiring additional support. Will fit inside most CPI rack enclosures, except P/N 11058 or wall enclosure). Mounting hardware not included. 19" version holds equipment up to 17.75"W x 25.8"D (450.9 mm x 655.8 mm), 23" version holds equipment up to 21.75"W x 25.8"D (552.5 mm x 655.8 mm). Made of strong, lightweight aluminum, supports up to 150 lb (68.0 kg). 19" version is UL Listed: File E140851; Category DUXR (US), DUXR7 (Canada) – Communications Circuit Accessory.

Part Number	Description	Shipping Weight lb (kg)
40750-719	Standard Single-Sided Steel Shelf, Black	12 (5.4)
40751-719	Standard Double-Sided Steel Shelf, Black	10 (4.5)
11294-X19	Low Profile Shelf, For 19" Rack	5 (2.3)
11294-X23	Low Profile Shelf, For 23" Rack	6 (2.7)
11054-X19	26"D (660 mm) Shelf, For 19" Rack	10 (4.5)
11054-X23	26"D (660 mm) Shelf, For 23" Rack	10 (4.5)

X=color: 1=Gray, 2=White, 5=Clear, 7=Black