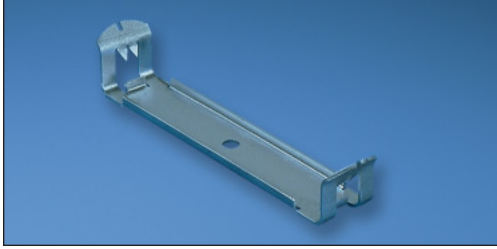


## PANDUCT® Snap-Clip Mounting Bracket — Type G, F, FS, D, MC, NNC & TMC Wiring Duct



- Duct easily snaps into bracket
- No mounting holes required in duct
- Ensures no metal is inside the duct
- Snap-clip spacing is not critical
- Simplifies fabrication drawings and panel layout

Part Number	Screw Required	For Duct Width		Std. Pkg. Qty.	Std. Ctn. Qty.
		In.	mm		
<b>Snap-Clip Mounting Bracket for use with Types G, F, FS &amp; D Duct</b>					
S1F-C	#8-32 x 1/4 (Provided)	1.00	25.4	100	1000
S1.5F-C	#8-32 x 1/4 (Provided)	1.50	38.1	100	1000
S2F-C	#8-32 x 1/4 (Provided)	2.00	50.8	100	1000
S3F-C	#8-32 x 1/4 (Provided)	3.00	76.2	100	1000
S4F-C	#8-32 x 1/4 (Provided)	4.00	101.6	100	1000
<b>Snap-Clip Mounting Bracket for use with Types MC, NNC &amp; TMC Duct</b>					
SNS25F-C	#8-32 x 1/4 (User Supplied)	1.00	25.4	100	1000
SNS37F-C	#8-32 x 1/4 (User Supplied)	1.50	38.1	100	1000
SNS50F-C	#8-32 x 1/4 (User Supplied)	2.00	50.8	100	1000
SNS62F-C	#8-32 x 1/4 (User Supplied)	3.00	76.2	100	1000

## PANDUCT® Snap-Clip Mounting Bracket — Type NE Wiring Duct



- Duct easily snaps into bracket
- Ensures no metal is inside the duct
- Mounts anywhere along the length of the duct for easy installation
- Simplifies fabrication drawings and panel layout

Part Number	Screw Required	For Duct Width		Std. Pkg. Qty.	Std. Ctn. Qty.
		In.	mm		
SNS.5-C	#6-32 x 1/4 (User Supplied)	.50	12.7	100	1000
SNS.75-C	#6-32 x 1/4 (User Supplied)	.75	19.1	100	1000
SNS1-C	#8-32 x 1/4 (User Supplied)	1.00	25.4	100	1000
SNS1.5-C	#8-32 x 1/4 (User Supplied)	1.50	38.1	100	1000
SNS2-C	#8-32 x 1/4 (User Supplied)	2.00	50.8	100	1000
SNS3-C	#8-32 x 1/4 (User Supplied)	3.00	76.2	100	1000

