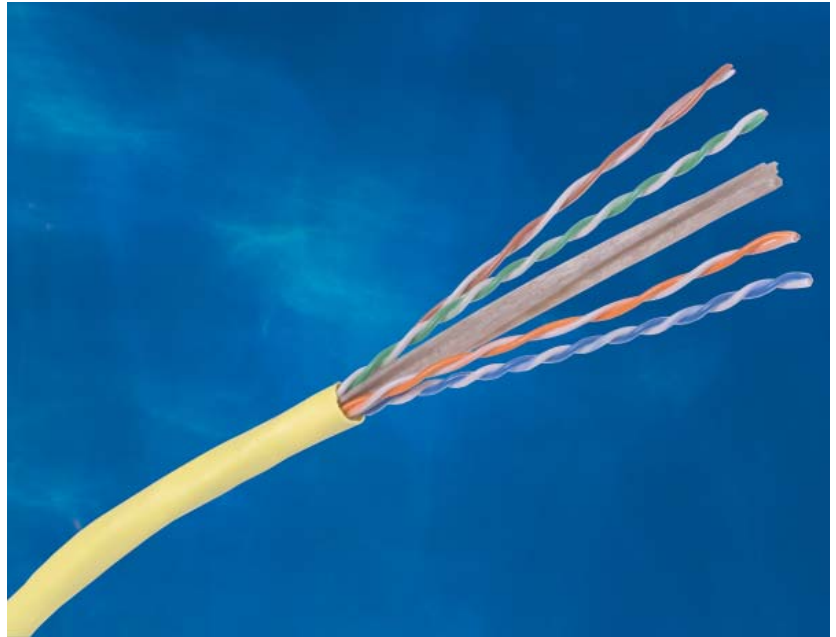




HUBBELL NextSpeed Category 6 Cable

Sweep Tested from 1-550 MHz.
 Guaranteed Headroom Over
 TIA and ISO Category 6
 Requirements.
 Reverse Sequential Footage
 Marking.
 Backward Compatible to
 Category 5e, 5, and 3.



SPECIFICATIONS

- ◆ **Conductor:** 23 AWG solid bare copper.
- ◆ **Insulation:** CMP: FEP, CMR: Polyolefin.
- ◆ **Pairing**
 - 1: Blue + White/Blue
 - 2: Orange + White/Orange
 - 3: Green + White/Green
 - 4: Brown + White/Brown
- ◆ **Cabling:** Four unshielded twisted pairs cabled around a star filler member.
- ◆ **Jacket**
 - CMP: Low-Smoke PVC.
 - CMR: PVC.

Hubbell's **NEXTSPEED**® Category 6 cable provides considerable margin above all electrical transmission performance requirements specified in TIA/EIA-568-B.2-1 and ISO/IEC 11801 (2nd edition) standards.

Hubbell Premise Wiring's high-performance **NEXTSPEED**® connectivity (jacks, panels, cords, blocks) was designed to mate with **NEXTSPEED**® Category 6 cable creating a cabling system that provides optimum electrical performance capabilities of handling critical, high-bandwidth applications.

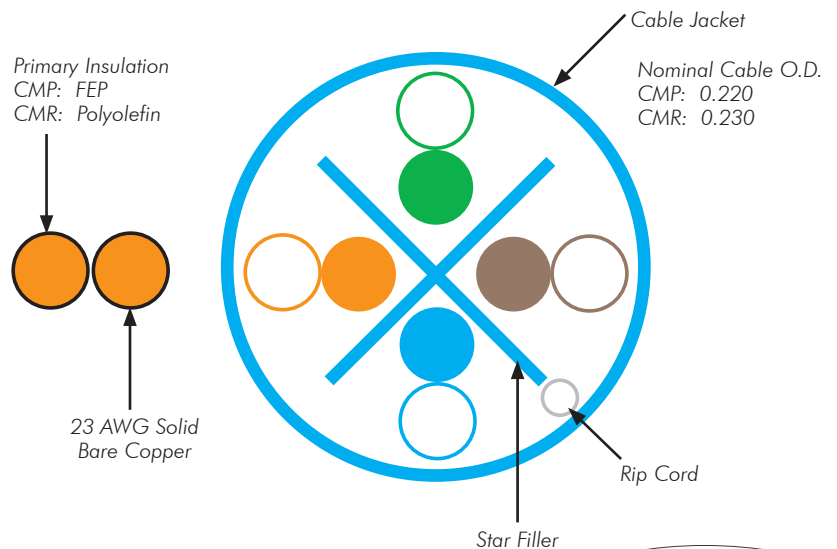
STANDARDS/VERIFICATIONS

- ANSI/TIA/EIA-568-B.2-1 Category 6 component specifications.
- IEEE 802.3af (PoE).
- UL Listed.
- NEC Article 800 compliant.

APPLICATIONS

- ▲ Ethernet: 10/100/1000BASE-T, 10GBASE-T.
- ▲ Data centers: Multi-Gigabit between devices
 - Server to server
 - Server to storage
 - Server to switch
- ▲ PoE applications.
- ▲ Bandwidth intense processing:
 - High-resolution 3D modeling
 - On-line document publishing
 - Real-time video to the desktop
 - Broadband video
 - Digital video

CABLE FEATURES



ORDERING INFORMATION



NEXTSPEED® Category 6, 4-Pair, UTP Cable

Color	Catalog No. Riser		Catalog No. Plenum	
	Spool	REELEX*	Spool	REELEX*
Blue	C6SRB	C6RRB	C6SPB	C6RPB
Gray	C6SRGY	C6RRGY	C6SPGY	C6RPGY
White	C6SRW	C6RRW	C6SPW	C6RPW
Yellow	C6SRY	C6RRY	C6SPY	C6RPY

* REELEX is licensed and patented by Windings Inc.

NEXTSPEED® SYSTEM PRODUCTS

NEXTSPEED® Jacks, Category 6

Order Information

Catalog No. **HXJ6XX**

XX = Color:

- BK'** = Black;
- B'** = Blue;
- EI'** = Electric Ivory;
- GL'** = Gold;
- GY'** = Gray;
- GN'** = Green;
- OW'** = Office White;
- OR'** = Orange;
- P'** = Purple;
- R'** = Red;
- TI'** = Telco Ivory;
- W'** = White;
- Y'** = Yellow.



NEXTSPEED® Patch Panel, Category 6

Order Information

Description	Catalog No.
Protected PCB	P6EXXU
Universal Angled	P6XXVU
Non-Protected PCB	P6XXU

XX = Ports

- '24' = 24-port, 1.75"H
- '48' = 48-port, 3.50"H
- '96' = 96-port, 7.00"H



P6E48U

See page Full Line Catalog page for product options: color, size, length.

NEXTSPEED® Patch Cords, Category 6

Order Information

Catalog No. **PCX6XX***

XX = Standard Color:

- "BK" = Black; "B" = Blue; "GY" = Gray;
- "Y" = Yellow

* = Standard Length:

- "03" = 3'; "06" = 6'; "08" = 8'; "10" = 10';
- "12" = 12'; "16" = 16'; "20" = 20';



PCX6B03

TRANSMISSION SPECIFICATIONS - Worst Case

TIA/EIA-568-B.2-1 Category 6 Compliant; ISO/IEC 11801, 2nd ed. Category 6 Compliant

Freq. (MHz)	Ins. loss (dB/100m)	NEXT loss (dB)	PSNEXT loss (dB)	ACR (dB)	PSACR (dB)	ELFEXT (dB)	PSELFEXT (dB)	Return loss (dB)
1	2.1	75.5	73.5	73.5	71.5	71.0	68.0	20.2
4	3.9	66.5	64.5	62.7	60.7	59.0	56.0	23.2
8	5.4	62.0	60.0	56.7	54.7	52.9	49.9	24.7
10	6.1	60.5	58.5	54.5	52.5	51.0	48.0	25.2
16	7.7	57.4	55.4	49.8	47.8	46.9	43.9	25.2
31.25	10.8	53.1	51.1	42.4	40.4	41.1	38.1	23.8
62.5	15.5	48.6	46.6	33.2	31.2	35.1	32.1	21.7
100	19.9	45.5	43.5	25.7	23.7	31.0	28.0	20.3
200	29.1	41.0	39.0	12.0	10.0	25.0	22.0	18.2
250	32.9	39.5	37.5	6.7	4.7	23.0	20.0	17.8
350*	39.9	37.3	35.3	-	-	20.1	17.1	17.3
400*	42.9	36.5	34.5	-	-	19.0	15.9	16.9
500*	48.1	35.9	33.9	-	-	16.9	13.9	16.3
550*	50.7	34.8	33.6	-	-	15.8	13.1	15.8

* Frequencies beyond the TIA and ISO requirements are for information only.



Hubbell Premise Wiring

HUBBELL INCORPORATED (Delaware)
 14 Lord's Hill Road • Stonington, CT 06378-0901 • (860) 535-8326 • 800-626-0005
 Fax: (860) 535-8328 • Internet site: <http://www.hubbell-premise.com>



Worldwide Locations

Hubbell Premise Wiring, Asia Pacific
 Hubbell Canada Inc.
 Hubbell Premise Wiring, Central America
 Hubbell Premise Wiring, China
 Hubbell Premise Wiring, Europe
 Hubbell Premise Wiring, India
 Hubbell Int'l. Inc., Korea Branch

852-2836-7131
 905-839-1138
 506-309-4158
 86-21-6374 2660
 44-01283 500500
 91-99001-03341
 (82 2) 2607 1363

Fax: 852-2836-7132
 Fax: 905-839-9108
 Fax: 506-260-1616
 Fax: 86-21-6374 2799
 Fax: 44-01283 500400
 Fax: (82 2) 2603 7386

Hubbell Premise Wiring, Latin America
 Hubbell de Mexico, S.A. de C.V.
 Hubbell Premise Wiring, Middle East
 Hubbell Premise Wiring, Puerto Rico
 Hubbell-Taian Co., Ltd., Taiwan
 Hubbell Premise Wiring, Venezuela

305-408-4501
 (5255) 9151-9999
 971-4-393-4192
 787-855-1075
 886-2-2522-1862
 58-212-5156482

Fax: 305-408-8201
 Fax: (5255) 9151-9989
 Fax: 971-4-393-4194
 Fax: 787-855-3265
 Fax: 886-2-2522-1872
 Fax: 58-212-6627258