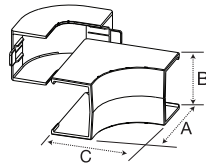


Catalog Number

Fittings

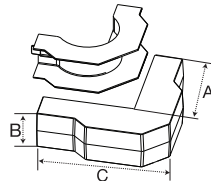
Cover Only Base & Cover Color

Internal Elbow
Full capacity 1¼ in. bend radius internal elbow.



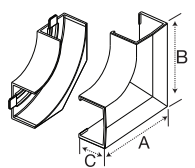
PP1IE	PP1IEBC	Office White
A: 2.40" (60.96)	A: 2.40" (60.96)	
B: 1.03" (26.16)	B: 1.03" (26.16)	
C: 2.40" (60.96)	C: 2.40" (60.96)	

External Elbow
Full capacity 1¼ in. bend radius external elbow.



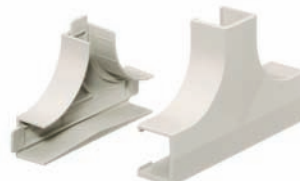
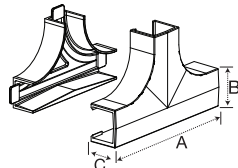
PP1EE	PP1EEBC	Office White
A: 4.47" (113.54)	A: 4.47" (113.54)	
B: 1.03" (26.16)	B: 1.03" (26.16)	
C: 4.47" (113.54)	C: 4.47" (113.54)	

Flat Elbow
Full capacity 1¼ in. bend radius flat elbow.



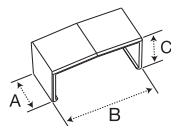
PP1FE	PP1FEBC	Office White
A: 2.62" (66.55)	A: 2.62" (66.55)	
B: 2.62" (66.55)	B: 2.62" (66.55)	
C: 0.85" (21.59)	C: 0.85" (21.59)	

Tee
Full capacity 1¼ in. bend radius tee.



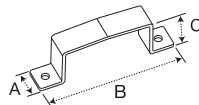
PP1TC	PP1TCBC	Office White
A: 4.22" (107.19)	A: 4.22" (107.19)	
B: 2.62" (66.55)	B: 2.62" (66.55)	
C: 0.85" (21.59)	C: 0.85" (21.59)	

Splice Cover
For covering potential openings where two lengths of raceway come together.



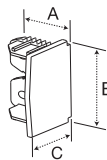
PP1SC		Office White
A: 1.09" (27.69)		
B: 1.02" (25.91)		
C: 0.85" (21.59)		

Safety Strap
For preventing potential tampering with PP1 PremiseTrak cover. Can also be used as a splice cover.



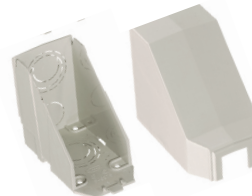
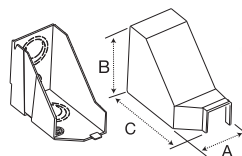
PP1SS		Office White
A: 0.62" (15.75)		
B: 1.94" (49.28)		
C: 0.86" (21.84)		

End Cap
For closing end of raceway.



PP1EC		Office White
A: 1.00" (25.40)		
B: 0.84" (21.34)		
C: 0.77" (19.56)		

Conduit Adapter/Ceiling Fitting
For connecting conduit to raceway. Also use for ceiling feeds. Has combination ½ in., ¾ in. and 1 in. trade size KOs.



PLP1CACF	Office White
A: 2.29" (58.17)	
B: 3.31" (84.07)	
C: 3.90" (99.06)	

