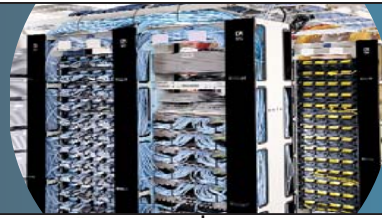




CHATSWORTH PRODUCTS, INC.

Organize.  
Store.  
Secure.™



Sold by:



# Rack Systems



Universal Rack



Standard Racks, 3" & 6" Deep



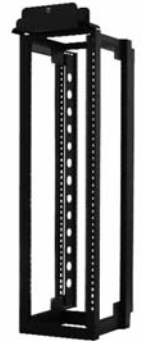
Seismic Frame® Two-Post Rack



QuadraRack 4-Post & Server Frame

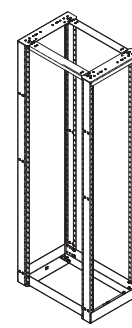
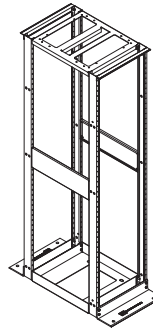
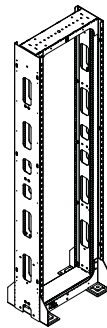
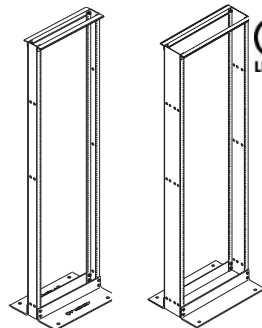
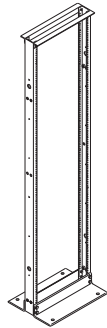


Adjustable QuadraRack™ & ServerRack



Adjustable Rail QuadraRack™ & ServerRack

Universal Rack	Standard Racks, 3" & 6" Deep	Seismic Frame® Two-Post Rack	QuadraRack 4-Post & Server Frame	Adjustable QuadraRack™ & ServerRack	Adjustable Rail QuadraRack™ & ServerRack
<p><b>Applications:</b> Network facilities and data center computer rooms</p> <p><b>Key Features:</b></p> <ul style="list-style-type: none"> <li>Threaded rails for quick attachment of network equipment and patch panels</li> <li>Use with shelves to support large equipment</li> <li>Fixed position mounting channels</li> <li>RMU marked and numbered</li> <li>UL Listed</li> </ul>	<p><b>Applications:</b> Network facilities</p> <p><b>Key Features:</b></p> <ul style="list-style-type: none"> <li>Threaded rails for quick attachment of network equipment and patch panels</li> <li>Use with shelves to support large equipment</li> <li>Fixed position mounting channels</li> <li>RMU marked and numbered</li> <li>UL Listed</li> </ul>	<p><b>Applications:</b> Network facilities and data center computer rooms</p> <p><b>Key Features:</b></p> <ul style="list-style-type: none"> <li>Designed for use in earthquake hazard areas</li> <li>Meets GR-63-CORE NEBS Zone 4 requirements</li> <li>Threaded or square-punched mounting rails can be set 6" (150 mm) or 3" (80 mm) apart</li> <li>RMU marked and numbered with reversible numbering</li> <li>Integral grounding and bonding system</li> <li>Built-in attachment points for cable guides and power strips</li> </ul>	<p><b>Applications:</b> Network facilities</p> <p><b>Key Features:</b></p> <ul style="list-style-type: none"> <li>QuadraRack 4-Post Frame has threaded rails to support large network switches</li> <li>QuadraRack Server Frame has square-punched rails to support rack-mount servers</li> <li>Fixed position mounting channels</li> <li>RMU marked</li> </ul>	<p><b>Applications:</b> Network facilities and data center computer rooms</p> <p><b>Key Features:</b></p> <ul style="list-style-type: none"> <li>Adjustable QuadraRack has threaded rails to support large network switches</li> <li>Adjustable ServerRack has square-punched rails to support rack-mount servers</li> <li>Mounting channels adjust in fixed 25 mm increments</li> <li>RMU marked and numbered</li> <li>UL Listed</li> </ul>	<p><b>Applications:</b> Network facilities and data center computer rooms</p> <p><b>Key Features:</b></p> <ul style="list-style-type: none"> <li>Adjustable Rail QuadraRack has threaded rails to support large network switches</li> <li>Adjustable Rail ServerRack has square-punched rails to support rack-mount servers</li> <li>Adjustable depth rear mounting rails</li> <li>RMU marked and numbered with reversible numbering</li> <li>Integrated grounding and bonding system</li> <li>UL Listed</li> </ul>
<p><b>Width (3):</b></p> <ul style="list-style-type: none"> <li>20.3" (516 mm), 19" EIA</li> <li>24.3" (617 mm), 23"</li> <li>36.3" (922 mm), 35"</li> </ul>	<p><b>Width:</b></p> <p><u>3"D Channel</u></p> <ul style="list-style-type: none"> <li>20.3" (516 mm), 19" EIA</li> </ul> <p><u>6"D Channel</u></p> <ul style="list-style-type: none"> <li>20.3" (516 mm), 19" EIA</li> <li>24.3" (617 mm), 23"</li> <li>36.3" (922 mm), 35"</li> </ul>	<p><b>Width (2):</b></p> <ul style="list-style-type: none"> <li>24" (610 mm), 19" EIA</li> <li>28" (710 mm), 23"</li> </ul>	<p><b>Width (1):</b></p> <ul style="list-style-type: none"> <li>20.3" (516 mm), 19" EIA</li> </ul>	<p><b>Width (1):</b></p> <ul style="list-style-type: none"> <li>20.3" (516 mm), 19" EIA</li> </ul>	
<p><b>Height (11):</b></p> <ul style="list-style-type: none"> <li>6' (1.8 m), 38 RMU</li> <li>7' (2.1 m), 45 RMU</li> <li>8' (2.4 m), 51 RMU</li> <li>9' (2.7 m), 58 RMU</li> </ul> <p><i>Other heights available, contact Tech Support, 800-834-4969</i></p>	<p><b>Height:</b></p> <ul style="list-style-type: none"> <li>7' (2.1 m), 45 RMU</li> <li>8' (2.4 m), 51 RMU, 3" Deep Only</li> <li>9' (2.7 m), 58 RMU, 3" Deep Only</li> </ul>	<p><b>Height (1):</b></p> <ul style="list-style-type: none"> <li>7' (2.1 m), 44 RMU</li> </ul>	<p><b>Height (3):</b></p> <p>4-Post Frame:</p> <ul style="list-style-type: none"> <li>7' (2.1 m), 45 RMU</li> <li>8' (2.4 m), 51 RMU</li> <li>9' (2.7 m), 58 RMU</li> </ul> <p>Server Frame:</p> <ul style="list-style-type: none"> <li>7' (2.1 m), 45 RMU</li> </ul>	<p><b>Height (4):</b></p> <ul style="list-style-type: none"> <li>6' (1.8 m), 38 RMU</li> <li>7' (2.1 m), 45 RMU</li> <li>8' (2.4 m), 51 RMU</li> <li>9' (2.7 m), 58 RMU</li> </ul>	<p><b>Width (1):</b></p> <ul style="list-style-type: none"> <li>23.62" (600 mm), 19" EIA</li> </ul>
<p><b>Depth (1):</b></p> <ul style="list-style-type: none"> <li>Overall footprint: 15" (380 mm), 3" (76 mm) mounting channel</li> </ul>	<p><b>Depth:</b></p> <p><u>3"D Channel</u>      <u>6"D Channel</u></p> <ul style="list-style-type: none"> <li>15" (380 mm)      18" (460 mm)</li> </ul>	<p><b>Depth (1):</b></p> <ul style="list-style-type: none"> <li>Overall footprint: 15" (380 mm), 9.6" (244 mm) channels</li> </ul>	<p><b>Depth (1):</b></p> <ul style="list-style-type: none"> <li>Overall footprint: 41" (1040 mm), 29" (740 mm) mounting depth</li> </ul>	<p><b>Depth (4 ranges):</b></p> <ul style="list-style-type: none"> <li>15.75" to 21.65" (400 to 500 mm)</li> <li>22.64" to 28.54" (575 to 725 mm)</li> <li>29.53" to 35.43" (750 to 900 mm)</li> <li>36.42" to 42.32" (925 to 1075 mm)</li> </ul>	<p><b>Height (1):</b></p> <ul style="list-style-type: none"> <li>7' (2.1 m), 45 RMU</li> <li>8' (2.4 m), 51 RMU</li> <li>9' (2.7 m), 58 RMU</li> </ul>
<p><b>Equipment Load Bearing Capacity:</b></p> <ul style="list-style-type: none"> <li>1500 lb (680.4 kg)</li> </ul>	<p><b>Equipment Load Bearing Capacity:</b></p> <ul style="list-style-type: none"> <li>1000 lb (453.6 kg)</li> </ul>	<p><b>Equipment Load Bearing Capacity:</b></p> <ul style="list-style-type: none"> <li>1000 lb (453.6 kg)</li> </ul>	<p><b>Equipment Load Bearing Capacity:</b></p> <ul style="list-style-type: none"> <li>4-Post Frame: 2000 lb (907.2 kg)</li> <li>Server Frame: 1000 lb (453.6 kg)</li> </ul>	<p><b>Equipment Load Bearing Capacity:</b></p> <ul style="list-style-type: none"> <li>2000 lb (907.2 kg)</li> </ul>	<p><b>Equipment Load Bearing Capacity:</b></p> <ul style="list-style-type: none"> <li>2200 lb (1000.0 kg)</li> </ul>
<p><b>Construction:</b></p> <ul style="list-style-type: none"> <li>Bolted aluminum and steel</li> </ul>	<p><b>Construction:</b></p> <ul style="list-style-type: none"> <li>Bolted aluminum and steel</li> </ul>	<p><b>Construction:</b></p> <ul style="list-style-type: none"> <li>Welded steel</li> </ul>	<p><b>Construction:</b></p> <ul style="list-style-type: none"> <li>Bolted aluminum and steel</li> </ul>	<p><b>Construction:</b></p> <ul style="list-style-type: none"> <li>Welded and bolted steel</li> </ul>	<p><b>Construction:</b></p> <ul style="list-style-type: none"> <li>Welded and bolted steel</li> </ul>



### Universal Rack

### Standard Racks, 3" & 6" Deep

### Seismic Frame® Two-Post Rack

### QuadraRack 4-Post & Server Frame

### Adjustable QuadraRack™ & ServerRack

### Adjustable Rail QuadraRack™ & ServerRack

Part No.	Description	Wt.
46353-X03	19"W x 7"H x 3"D, 45 RMU 19"W x 2.1 m	39 lb 17.7 kg
46353-X15	19"W x 8"H x 3"D, 51 RMU 19"W x 2.4 m	41 lb 18.6 kg
46353-X08	19"W x 6"H x 3"D, 58 RMU 19"W x 1.8 m	43 lb 19.5 kg

X=color: (-1) for Gray, (-2) for White, (-5) for Grained Aluminum and (-7) for Black. Other sizes available. Contact Tech Support at 800-834-4969 for additional options.

#### Key Accessories

Part No.	Description	Wt.
40604-003	Concrete Slab Install Kit	1 lb/0.5 kg
40607-001	Wood Floor Install Kit	2 lb/0.9 kg
10630-119	16"-22" (410 mm to 560 mm)	
	Raised Floor Kit	20 lb/9.1 kg
40602-X00	Line Up Spacer Kit	1 lb/0.5 kg
40605-001	#12-24 Screws, Zinc, 50	1 lb/0.5 kg
40605-005	#12-24 Screws, Black, 50	1 lb/0.5 kg

Part No.	Description	Wt.
55053-X03	19"W x 7"H x 3"D, 45 RMU 19"W x 2.1 m x 76 mm	32 lb 14.5 kg
55053-X15	19"W x 8"H x 3"D, 45 RMU 19"W x 2.4 m x 76 mm	38 lb 17.2 kg
55053-X08	19"W x 9"H x 3"D, 45 RMU 19"W x 2.7 m x 76 mm	41 lb 18.6 kg
66353-X03	19"W x 7"H x 6"D, 45 RMU 19"W x 2.1 m x 150 mm	43 lb 19.5 kg

X=color: (-1) for Gray, (-2) for White, (-5) for Grained Aluminum and (-7) for Black. Other styles and sizes available. Contact Tech Support at 800-834-4969 for additional options.

#### Key Accessories

Part No.	Description	Wt.
40604-003	Concrete Slab Install Kit	1 lb/0.5 kg
40607-001	Wood Floor Install Kit	2 lb/0.9 kg
11762-119	16"-22" (410 mm to 560 mm)	
	Raised Floor Kit	21 lb/9.5 kg
40702-X00	Line Up Spacer Kit	1 lb/0.5 kg
40605-001	#12-24 Screws, Zinc, 50	1 lb/0.5 kg
40605-005	#12-24 Screws, Black, 50	1 lb/0.5 kg

Part No.	Description	Wt.
13853-X03	19"W x 7"H (2.1 m) x 44 RMU Tapped #12-24 Zinc Rails	180 lb 81.6 kg
13854-X03	19"W x 7"H (2.1 m) x 44 RMU Square-Punched Zinc Rails	178 lb 80.7 kg
13855-X03	19"W x 7"H (2.1 m) x 44 RMU Tapped #12-24 Painted Rails	180 lb 81.6 kg
13856-X03	19"W x 7"H (2.1 m) x 44 RMU Square-Punched Painted Rails	178 lb 80.7 kg
13883-X03	23"W x 7"H (2.1 m) x 44 RMU Tapped #12-24 Zinc Rails	180 lb 81.6 kg
13884-X03	23"W x 7"H (2.1 m) x 44 RMU Square-Punched Zinc Rails	178 lb 80.7 kg
13885-X03	23"W x 7"H (2.1 m) x 44 RMU Tapped #12-24 Painted Rails	180 lb 81.6 kg
13886-X03	23"W x 7"H (2.1 m) x 44 RMU Square-Punched Painted Rails	178 lb 80.7 kg

X=color: (-1) for Gray, (-2) for White, (-7) for Black. Other styles and sizes available. Install using four seismic-rated concrete anchors (sold separately below in Floor Anchor Kit).

#### Key Accessories

Part No.	Description	Wt.
13702-001	Concrete Floor Anchor Kit	3 lb/1.4 kg
13703-701	Floor Drilling Template	6 lb/2.7 kg
12637-001	M6 Cage Nuts, 25	1 lb/0.5 kg
12638-001	10-32 Cage Nuts, 25	1 lb/0.5 kg
12639-001	12-24 Cage Nuts, 25	1 lb/0.5 kg
40605-001	#12-24 Screws, Zinc, 50	1 lb/0.5 kg
40605-005	#12-24 Screws, Black, 50	1 lb/0.5 kg

Note: Concrete Floor Anchor Kit includes four M12-5-1/8 Hilti HSL-3 Heavy-Duty Sleeve Anchors. A licensed structural engineer should recommend placement, bracing and installation practices for Seismic Frame® Two-Post Rack.

Part No.	Description	Wt.
50120-X03	19"W x 7"H x 29"D, 45 RMU 19"W x 2.1 m x 740 mm	65 lb 29.5 kg
50120-X15	19"W x 8"H x 29"D, 51 RMU 19"W x 2.4 m x 740 mm	67 lb 30.4 kg
50120-X08	19"W x 9"H x 29"D, 58 RMU 19"W x 2.7 m x 740 mm	69 lb 31.3 kg

#### QuadraRack Server Frame

Part No.	Description	Wt.
15053-X03	19"W x 7"H x 29"D, 45 RMU 19"W x 2.1 m x 740 mm	77 lb 34.9 kg

Order cage nuts separately

#### ExpandARack

Converts Standard and Universal Racks into QuadraRacks

Part No.	Description	Wt.
<b>For Standard Racks</b>		
50110-X03	For 7"H (2.1 m)	46 lb/20.9 kg
50110-X15	For 8"H (2.4 m)	48 lb/21.8 kg
50110-X08	For 9"H (2.7 m)	50 lb/22.7 kg
<b>For Universal Racks</b>		
50130-X03	For 7"H (2.1 m)	52 lb/23.6 kg
50130-X15	For 8"H (2.4 m)	55 lb/24.9 kg
50130-X08	For 9"H (2.7 m)	58 lb/26.3 kg

X=color: (-1) for Gray, (-2) for White and (-7) for Black.

#### Key Accessories

Part No.	Description	Wt.
40604-003	Concrete Slab Install Kit	1 lb/0.5 kg
40607-001	Wood Floor Install Kit	2 lb/0.9 kg
12637-001	M6 Cage Nuts, 25	1 lb/0.5 kg
12638-001	10-32 Cage Nuts, 25	1 lb/0.5 kg
12639-001	12-24 Cage Nuts, 25	1 lb/0.5 kg
40605-001	#12-24 Screws, Zinc, 50	1 lb/0.5 kg
40605-005	#12-24 Screws, Black, 50	1 lb/0.5 kg

Part No.	Description	Wt.
15215-X03	19"W x 7"H (2.1 m), 45 RMU 15.75" to 21.65" D (400 mm to 550 mm D)	89 lb 40.4 kg
15216-X03	19"W x 7"H (2.1 m), 45 RMU 22.64" to 28.54" D (575 mm to 725 mm D)	93 lb 42.2 kg
15217-X03	19"W x 7"H (2.1 m), 45 RMU 29.53" to 35.43" D (750 mm to 900 mm D)	97 lb 44.0 kg
15218-X03	19"W x 7"H (2.1 m), 45 RMU 36.42" to 42.32" D (925 mm to 1075 mm D)	101 lb 45.8 kg

#### Adjustable QuadraRack

Part No.	Description	Wt.
15212-X03	19"W x 7"H (2.1 m), 45 RMU 22.64" to 28.54" D (575 mm to 725 mm D)	94 lb 42.6 kg
15213-X03	19"W x 7"H (2.1 m), 45 RMU 29.53" to 35.43" D (750 mm to 900 mm D)	98 lb 44.5 kg
15214-X03	19"W x 7"H (2.1 m), 45 RMU 36.42" to 42.32" D (925 mm to 1075 mm D)	102 lb 46.3 kg

#### Adjustable ServerRack

Part No.	Description	Wt.
15211-X03	19"W x 7"H (2.1 m), 45 RMU 15.75" to 21.65" D (400 mm to 550 mm D)	90 lb 40.8 kg

Part No.	Description	Wt.
15212-X03	19"W x 7"H (2.1 m), 45 RMU 22.64" to 28.54" D (575 mm to 725 mm D)	94 lb 42.6 kg

Part No.	Description	Wt.
15213-X03	19"W x 7"H (2.1 m), 45 RMU 29.53" to 35.43" D (750 mm to 900 mm D)	98 lb 44.5 kg

Part No.	Description	Wt.
15214-X03	19"W x 7"H (2.1 m), 45 RMU 36.42" to 42.32" D (925 mm to 1075 mm D)	102 lb 46.3 kg

X=color: (-1) for Gray, (-2) for White and (-7) for Black.

#### Key Accessories

Part No.	Description	Wt.
40604-003	Concrete Slab Install Kit	1 lb/0.5 kg
40607-001	Wood Floor Install Kit	2 lb/0.9 kg
12637-001	M6 Cage Nuts, 25	1 lb/0.5 kg
12638-001	10-32 Cage Nuts, 25	1 lb/0.5 kg
12639-001	12-24 Cage Nuts, 25	1 lb/0.5 kg
40605-001	#12-24 Screws, Zinc, 50	1 lb/0.5 kg
40605-005	#12-24 Screws, Black, 50	1 lb/0.5 kg

Part No.	Description	Wt.
15251-X03	19"W x 7"H (2.1 m), 45 RMU 23.6" D (600 mm), rails adjust 15.0" to 29.5" D (380 mm to 750 mm D)	185 lb 83.9 kg
15252-X03	19"W x 7"H (2.1 m), 45 RMU 35.4" D (900 mm), rails adjust 15.0" to 41.3" D (380 mm to 1050 mm D)	193 lb 87.5 kg

X=color: (-1) for Gray, (-2) for White, (-7) for Black. Other sizes available. Contact Technical Support at 800-834-4969 for assistance.

#### Adjustable Rail ServerRack

Part No.	Description	Wt.
15253-X03	19"W x 7"H (2.1 m), 45 RMU 23.6" D (600 mm), rails adjust 15.0" to 29.5" D (380 mm to 750 mm D)	185 lb 83.9 kg
15254-X03	19"W x 7"H (2.1 m), 45 RMU 35.4" D (900 mm), rails adjust 15.0" to 41.3" D (380 mm to 1050 mm D)	193 lb 87.5 kg

X=color: (-1) for Gray, (-2) for White, (-7) for Black. Other sizes available. Contact Technical Support at 800-834-4969 for assistance.

#### Key Accessories

Part No.	Description	Wt.
40604-003	Concrete Slab Install Kit	1 lb/0.5 kg
40607-001	Wood Floor Install Kit	2 lb/0.9 kg
12637-001	M6 Cage Nuts, 25	1 lb/0.5 kg
12638-001	10-32 Cage Nuts, 25	1 lb/0.5 kg
12639-001	12-24 Cage Nuts, 25	1 lb/0.5 kg
40605-001	#12-24 Screws, Zinc, 50	1 lb/0.5 kg
40605-005	#12-24 Screws, Black, 50	1 lb/0.5 kg



CPI's new online Product Configurator is an easy-to-use confidential tool that guides you through the steps and selections necessary to create customized Systems. Check out the Product Configurator at [www.chatsworth.com/configurator](http://www.chatsworth.com/configurator).

All products quoted are subject to availability based on manufacturing capacity and shipping dates should be considered estimates only. While every effort has been made to ensure the accuracy of all information, CPI does not accept liability for any errors or omissions and reserves the right to change information and descriptions of listed services and products. ©2008 Chatsworth Products, Inc. All rights reserved. CPI, CPI Passive Cooling, Saf-T-Grip, Seismic Frame, SlimFrame and MegaFrame are federally registered trademarks of Chatsworth Products, Inc. Cube-IT Plus, Evolution, Simply Efficient, TerraFrame and QuadraRack are trademarks of Chatsworth Products, Inc. All other trademarks belong to their respective companies. MKT-60020-203 Rev.5 09/08