

NEW! DP5e™ Patch Panel

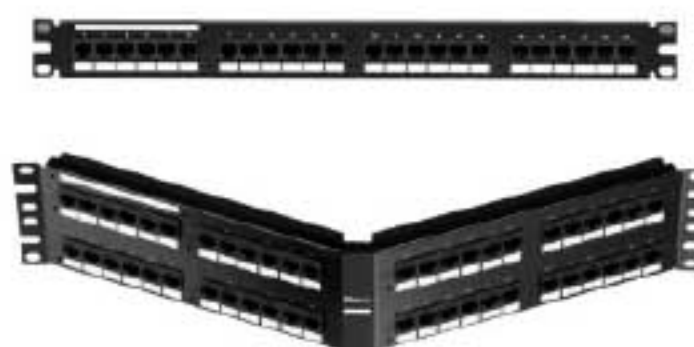
Sold by:



PANDUIT® SPECIFICATION SHEET

specifications

Category 5e/Class D patch panels shall terminate unshielded twisted 4 pair, 22 – 26 AWG, 100 ohm cable and shall mount to standard EIA 19" or 23" racks. Industry standard single wire 110 punchdown tool shall be used for terminations. Patch panels shall be supplied with T568A and T568B wiring configurations. Ports and panels shall be easy to identify with write-on areas.



technical information

Category 5e/Class D channel performance:	Exceeds all TIA/EIA-568-B.2 Category 5e and ISO 11801 2nd Edition Class D channel standard requirements at swept frequencies up to 100 MHz	
Category 5e/Class D component performance:	Exceeds all TIA/EIA-568-B.2 Category 5e and ISO 11801 2nd Edition Class D component standard requirements at swept frequencies up to 100 MHz	
Dimensions:	12 port flat:	2.10"H x 10.0"W x 1.17"D (53.3 x 253.9 x 29.7mm), 89D bracket
	24 port flat:	1.72"H x 19.0"W x 1.17"D (43.7 x 482.6 x 29.7mm), 1 RU
	48 port flat:	3.47"H x 19.0"W x 1.17"D (88.1 x 482.6 x 29.7mm), 2 RU
	24 port angled:	1.72"H x 19.0"W x 4.77"D (43.7 x 482.6 x 121.2mm), 1 RU
	48 port angled:	3.47"H x 19.0"W x 4.77"D (88.1 x 482.6 x 121.2mm), 2 RU
Mounting option:	Mounts to standard EIA 19" or 23" racks (23" requires use of extender bracket). 12 port suitable for wall mount with 89D bracket	
Packaging:	Packaged with M6 and #12 – 24 mounting screws	

key features and benefits

100% performance tested	Confidence that each port will deliver the critical electrical performance requirements
Each port individually serialized	Can be quality traced to sub-components
Common termination tooling	Terminates with industry standard 110 punchdown tool for familiar, easy and fast installation
Port and panel identification	Write-on areas follow TIA/EIA-606-A labeling standards
Universal wiring schemes	T568A and T568B wiring scheme clearly identified on universal label
Industry standard RJ45 interface	Familiar to end-users; backwards compatible
Replaceable port module (DRJ5E88TGBL)	Ability to easily replace damaged port for full panel use

applications

DP5e™ Patch Panel is a component of the TX5500™ Copper Cabling System. The PANDUIT® TX5500™ System provides end-to-end Gigabit Ethernet performance with usable bandwidth beyond 100 MHz. With certified performance to the TIA/EIA-568-B.2 Category 5e and ISO 11801 Class D standards, this system will support the following applications:

- Ethernet 10BASE-T, 100BASE-T (Fast Ethernet), 1000BASE-T (Gigabit Ethernet)
- 155 Mb/s ATM, 622 Mb/s ATM
- Token Ring 4/16
- Voice/data systems
- Voice over internet protocol (VoIP)

www.panduit.com

TX5500™ Copper Cabling System

DP5e™ Flat Punchdown Patch Panels

12 port:	DP125E88TG
24 port, 1 RU:	DP245E88TG
48 port, 2 RU:	DP485E88TG

DP5e™ Angled Punchdown Patch Panels

24 port, 1 RU:	DPA245E88TG
48 port, 2 RU:	DPA485E88TG

TX5500™ UTP Cable

Plenum:	PUP5504BU-U*
Riser:	PUR5504BU-U*
25-pair riser:	PUR5525IG-U

Mini-COM® TX5e™ Jack Module

Module:	CJ5E88TG**
---------	------------

TX5e™ Patch Cords

3 feet:	UTPCH3***
5 feet:	UTPCH5***
7 feet:	UTPCH7***
10 feet:	UTPCH10***
14 feet:	UTPCH14***
20 feet:	UTPCH20***

PAN-PUNCH™ 110 Category 5e System

See website (www.panduit.com) or catalog for complete system information

Termination Tools

Jack module termination tool:	EGJT‡
Wire snipping tool:	CWST
Wire stripping tool:	CJAST
Panel punchdown tool:	PDT110

*For colors other than BU (Blue), substitute with WH (White), YL (Yellow), or IG (Int'l Gray). Contact Customer Service for additional colors requiring minimum order quantities.

**To designate a color, add suffix IW (Off White), EI (Electric Ivory), IG (Int'l Gray), WH (White), BL (Black), OR (Orange), RD (Red), BU (Blue), GR (Green), YL (Yellow), AW (Arctic White), BR (Brown) or VL (Violet). Contact Customer Service for additional colors requiring minimum order quantities.

***For standard cable colors other than Off White, add suffix BL (Black), BU (Blue), GR (Green), RD (Red), YL (Yellow), OR (Orange), or VL (Violet) to the end of the part number. Contact Customer Service for additional colors and lengths requiring minimum order quantities.

‡Terminates enhanced GIGA-TX™ Style Jack Module.