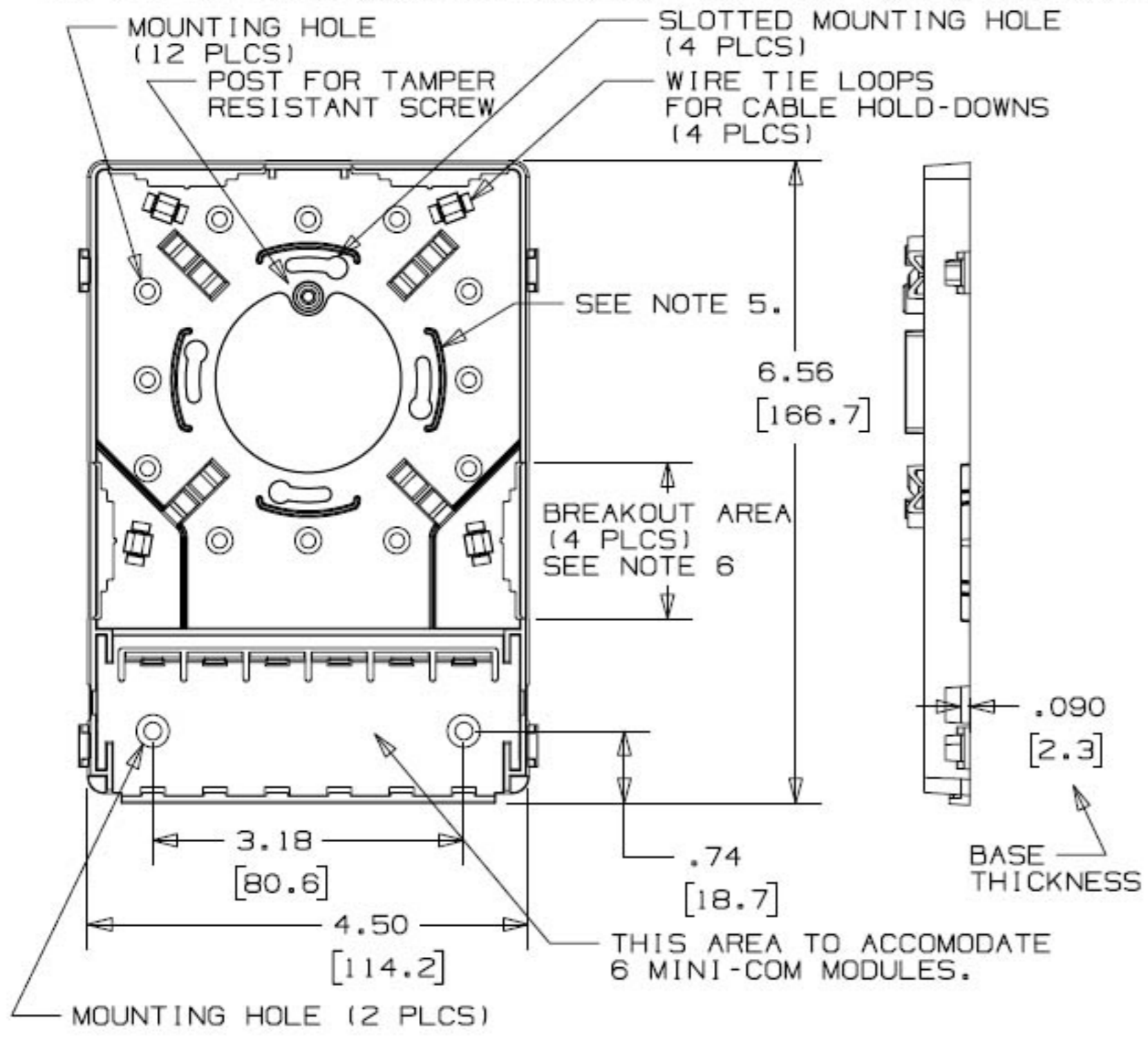


THIS COPY IS PROVIDED ON A RESTRICTED BASIS AND IS NOT TO BE USED IN ANY WAY DETRIMENTAL TO THE INTERESTS OF PANDUIT CORP.



PANDUIT PART NO.	WEIGHT
CBXF6**-A	2.7 LB/10 PCS (1208 g/10 PCS)

NOTES:

- SEE CURRENT CATALOG FOR ADDITIONAL PART NUMBER SUFFIXES TO INDICATE COLOR AND OR PACKAGE QUANTITY.
- SEE CATALOG FOR COMPLETE LIST OF PARTS APPLICABLE FOR USE WITH THIS PART.
- SURFACE MOUNT BOX HOLDS UP TO SIX MINI-COM CONNECTOR MODULES.
- THE CBXF6**-A IS SUPPLIED WITH TWO #6-32 X 1" COMBINATION SLOT/PHILLIPS PAN HD SCREWS WITH NON THREAD LEAD POINT, TWO PAN-TYS, A LABEL, A LABEL COVER WITH A TAMPER RESISTANT SCREW, AND TWO LOOSE ADHESIVE BACKED MOUNT STRIPS.
- THE BUILT IN FIBER SPOOL MAINTAINS THE RECOMMENDED MINIMUM BEND RADIUS FOR FIBER OPTIC AND CATEGORY 5 CABLES.
- CAN BE USED WITH PAN-WAY LD3, CD3, LD5, AND CD5 RACEWAYS.
- DIMENSIONS IN PARENTHESES ARE IN METRIC.



NO WARRANTY, EXPRESSED OR IMPLIED, IS MADE BY PANDUIT WITH RESPECT TO ADHESIVE BOND PERFORMANCE. AMONG OTHER THINGS, THE CONDITIONS UNDER WHICH THESE MOUNTS MAY BE APPLIED AND/OR THE SURFACE TO WHICH THEY MAY BE APPLIED ARE BEYOND PANDUIT'S CONTROL.

CAD FILENAME/LAYERS		D355448P_DC_CBXF6_01	
<h1>PANDUIT</h1> CORP. TINLEY PARK, ILLINOIS			
6 MODULE SPACE MULTI-MEDIA FIBER OUTLET (CBXF6**-A) CUSTOMER DRAWING			
UNLESS OTHERWISE SPECIFIED, DIMENSIONAL TOLERANCES ARE:		UNLESS OTHERWISE SPECIFIED, ALL DIMENSIONS ARE GIVEN IN INCHES, THIRD ANGLE PROJECTION.	
(.X) ± .01 (.3)			
(.XX) ± .03 (.8)			
ANGLES ±			
DRAWN BY	DW	MAT'L:	ABS
DATE	10-3-96		
CHK'D	CEF		
SCALE		NONE	
DRAWING NO.		35544-15	
SHT		1 OF 2	
DWG SIZE		A	



REV	DATE	BY	CHK	DESCRIPTION	ECN	R	CUST	SUP
1	12-4-96	JBA		B. DELETED NOTE #7 AND ADDED TAPE TO NOTE #4. A. REV'D P/N: WAS REMOVED CBXF6**.	35544-15			
R	10-3-96	DW	CEF	RELEASED TO PRODUCTION.	35544-15		CEF	