

# Fiber Optic Hardware with Factory-Installed Pigtailed

An Evolant™ Solutions Product

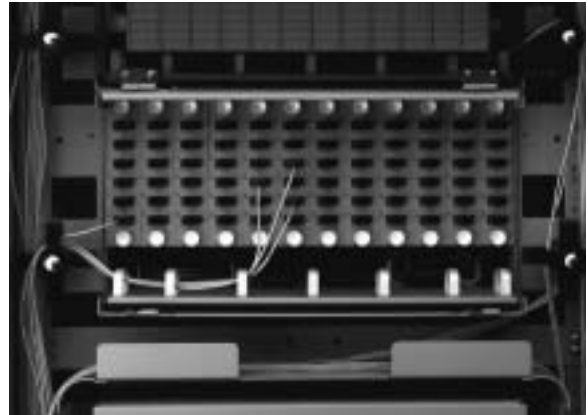
Corning  
Cable Systems

## Description

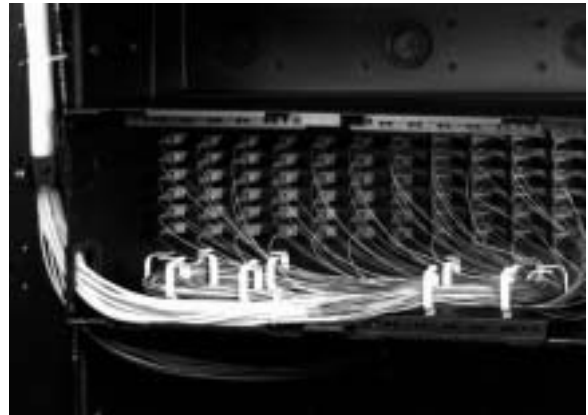
Corning Cable Systems offers pigtailed housings to enable splicing in fiber optic housings typically installed within central or remote offices, headends and hubs. Housings are available partially or fully loaded. The pigtailed housings can be mated with splice housings for on-the-rack splicing. They are available with a variety of industry-standard connector types and come complete with factory-installed and tested connectorized pigtailed. Contact Corning Cable Systems Customer Service for more information on the availability of special configurations.

## Features / Benefits

- Factory quality termination
- Available in a variety of hardware styles, connector types and fiber counts
- Available with MIC® Cable, OptiStrip™ Buffered Fiber, ribbon or 3-mm single-fiber pigtailed
- Decreases the number of line items in an order and reduces installation time
- Custom configurations available



FDC® Unit Connector Housing | Photo ICH93



Eclipse® Hardware Connector Housing | Photo ICH78

# Fiber Optic Hardware with Factory-Installed Pigtailed

An Evolant™ Solutions Product

Corning  
Cable Systems

## Ordering Information

Note: Some product combinations using this matrix are not available. Please verify specific product availability with a Corning Cable Systems Customer Service Representative.

**P**   -   -

### 1 Select housing type.

Prefix for Space 1	Housing	Housing Dimensions (H x W x D) in	Maximum Number of Panels per Housing	Panel/Module Type (see Table B for capacities)	Splice Tray Options Type (see Table C)	Locking Availability	Notes
<b>ACH™ Unit – Angled Connector Housing</b>							
ACH	ACH-CMH-072	8 x 20.5 x 12	12	ACH Unit			23-in frame only
HPH	ACH-HMH-072	8 x 20.5 x 12	12	HCP			23-in frame only
ACP	ACH Unit pigtailed panels		N/A				Requires ACH Unit housing
HCP	HMH pigtailed panels		N/A				Requires HMH housing
<b>ADB</b>							
ADB	ADB-APH-072	8 x 17 x 11	12	ADB			19- or 23-in frame
<b>CCH – Closed Connector Housing</b>							
CC1	CCH-01U	1.75 x 17 x 12	2	CCH		Front or rear	19- or 23-in frame
CC2	CCH-02U	3.5 x 17 x 12	4	CCH		Front or rear	19- or 23-in frame
CC3	CCH-03U	5.25 x 17 x 12	6	CCH		Front or rear	19- or 23-in frame
CC4	CCH-04U	7 x 17 x 12	12	CCH		Front or rear	19- or 23-in frame
CS1	CCS-01U	1.75 x 17 x 12	2	CCH	2 Type 2R, 2S, 2M 1 Type 4R, 4S, 4M	Front or rear	19- or 23-in frame
CS3	CCS-03U	5.25 x 17 x 12	4	CCH	4 Type 2R, 2S, 2M 2 Type 4R, 4S, 4M	Front or rear	19- or 23-in frame
<b>Eclipse® Hardware</b>							
ECL	ECL-C4U with 4-fiber panels	7 x 17.3 x 12	12	ECL			19- or 23-in frame
EW2	ECL-W2P	6.7 x 12.5 x 4.25	2	ECL	6 Type 2R 3 Type 4R	Dual door	Wall-mountable
EW3	ECL-W3P	13 x 12.5 x 4.25	3	ECL	6 Type 2R 3 Type 4R	Dual door	Wall-mountable
EW6	ECL-W6P	20.75 x 12.5 x 4.25	6	ECL	12 Type 2R 6 Type 4R	Dual door	Wall-mountable
EP4	Eclipse Hardware Connector Panel		N/A				Requires ECL housing
<b>Fiber Building Terminal</b>							
FBT	FBT-048	11 x 17 x 6.12	8	LDC	4 Type 2R 2 Type 4R	Single (provider and subscriber)	Wall-mountable, locking version available

continued

# Fiber Optic Hardware with Factory-Installed Pigtailed

An Evolant™ Solutions Product

Corning  
Cable Systems

## Ordering Information (continued)

### ■ Select housing type (continued).

Prefix for Space 1	Housing	Housing Dimensions (H x W x D) in	Maximum Number of Panels per Housing	Panel/Module Type (see Table B for capacities)	Splice Tray Options Type (see Table C)	Locking Availability	Notes
<b>FDC® Unit – Fiber Distribution Center</b>							
FDC	FDC-CMH-072	8.75 x 17 x 11	12	FDC Unit		Front	19- or 23-in frame
FD5	FDC-CMH-024	5.25 x 17 x 11	4	FDC Unit		Front	19- or 23-in frame
FD1	FDC-001	26.25 x 17 x 11	24	FDC Unit	22 Type 2R, 2S 14 Type 4R, 4S, 4A	Front	19- or 23-in frame, splice and termination combo unit, 144-fiber
FD2	FDC-002	17.5 x 17 x 11	12	FDC Unit	22 Type 2R, 2S 14 Type 4R, 4S, 4A	Front	19 or 23- in frame, splice and termination combo unit, 72-fiber
FD3	FDC-003	8.75 x 17 x 11	4	FDC Unit	12 Type 2R, 2S 14 Type 4R, 4S	Front	19- or 23-in frame, splice and termination combo unit, 24-fiber
FDV	FDC-005	5.25 x 17 x 11	4	FDC Unit	2 Type 2R, 2S 2 Type 4R, 4S	Front	19- or 23-in frame, splice and termination combo unit, 24-fiber
FDM	FDC Unit Module		N/A				Requires FDC Unit housing
FDP	FDC Unit Panel		N/A				Requires FDC Unit housing
FHP	FHC Panel		N/A				Requires FHC housing
<b>HDF – High-Density Frame</b>							
HD1	HDF single shelf	1.75 x 21.25 x 12	24	HDF	One UST-024		23-in frame only
HD2	HDF double shelf	3.5 x 21.25 x 12	48	HDF	Two UST-024		23-in frame only
HD3	HDF triple shelf	5 x 21.25 x 12	72	HDF	Three UST-024		23-in frame only
HD4	HDF four shelf	7 x 21.25 x 12	96	HDF	Four UST-024		23-in frame only
HD5	HDF five shelf	8.75 x 21.25 x 12	120	HDF	Five UST-024		23-in frame only
HD6	HDF six shelf	10.5 x 21.25 x 12	144	HDF	Six UST-024		23-in frame only
HD7	HDF seven shelf	12.25 x 21.25 x 12	168	HDF	Seven UST-024		23-in frame only
HD8	HDF eight shelf	14 x 21.25 x 12	192	HDF	Eight UST-024		23-in frame only
HD9	HDF nine shelf	15.75 x 21.25 x 12	216	HDF	Nine UST-024		23-in frame only

continued

# Fiber Optic Hardware with Factory-Installed Pigtails

An Evolant™ Solutions Product

Corning  
Cable Systems

## Ordering Information (continued)

### 1 Select housing type (continued).

Prefix for Space 1	Housing	Housing Dimensions (H x W x D) in	Maximum Number of Panels per Housing	Panel/Module Type (see Table B for capacities)	Splice Tray Options Type (see Table C)	Locking Availability	Notes
<b>LDC</b>							
LDC	LDC-CMH-072	7 x 17 x 11	12	LDC			19- or 23-in frame
LDT	LDC-CMH-024	3.5 x 17 x 11	4	LDC			19- or 23-in frame
LDS	LDS-CMH-072	7 x 17 x 11	12	LDS			19- or 23-in frame, recessed panels
LHS	LHS-CMH-144	9 x 17 x 11	12	LHS			19- or 23-in frame
LHR	LHS-CHH-144	9 x 17 x 11	12	LHR			19- or 23-in frame, recessed panels
LXR	LXR-001	16 x 17 x 11	6 and 12	LDS, LHR			19- or 23-in frame, recessed panels, LDS and LHR combo unit
LTS	LTS-CMH-216	10 x 17 x 11	12	LTS			19- or 23-in frame
LD1	LDC-001	21 x 17 x 11	24	LDC	Six LGX® Compatible Trays		19- or 23-in frame, splice and termination combo unit, 144-fiber
LD2	LDC-002	14 x 17 x 11	12	LDC	Six LGX Compatible Trays		19- or 23-in frame, splice and termination combo unit, 72-fiber
LD5	LDC-005	5 x 17 x 11	4	LDC	One LGX Compatible Tray		19- or 23-in frame, splice and termination combo unit, 24-fiber
LDP	LDC Panel		N/A	LDP			Requires LDC housing
LHP	LHC Panel		N/A	LHP			Panel used in WBT-024
LRP	LDS Panel		N/A	LRP			Recessed panel used in LDS housing
LDM	LDC Module		N/A	LDM			Requires LDC housing
<b>PCH – Pretium™ Connector Housing</b>							
PR1	PCH-01U	1.75 x 17 x 16	2	CCH			19-in standard, 23-in sold separately
PR4	PCH-04U	7 x 17 x 16	12	CCH			19-in standard, 23-in sold separately

continued

# Fiber Optic Hardware with Factory-Installed Pigtailed

An Evolant™ Solutions Product

Corning  
Cable Systems

## Ordering Information (continued)

### 1 Select housing type (continued).

Prefix for Space 1	Housing	Housing Dimensions (H x W x D) in	Maximum Number of Panels per Housing	Panel/Module Type (see Table B for capacities)	Splice Tray Options Type (see Table C)	Locking Availability	Notes
<b>Remote Cabinet Shelf</b>							
RC2	RCS-012	1.75 x 17 x 11	2	FDC® Unit			19- or 23-in frame, forward sliding tray
RC4	RCS-024	3.5 x 17 x 11	4	FDC Unit			19- or 23-in frame, forward sliding tray
RH2	RCS-CSH-012	1.75 x 17 x 11	2	FDC-CP1P-123C	2 Type 2S 1 Type 4S		19- or 23-in frame, high-density, SC only
RH4	RCS-CSH-024	3.5 x 17 x 11	4	FDC-CP1P-123C	4 Type 2S 2 Type 4S		19- or 23-in frame, high-density, SC only
<b>Wall Building Terminal</b>							
WBT	WBT-012	7 x 15.5 x 4	2	LDC	2 Type 2R 1 Type 4R	Provider door	Wall-mountable, uses standard LDC panels
WB4	WBT-024	7 x 15.5 x 4	2	LHC	2 Type 2R 1 Type 4R	Provider door	Wall-mountable, uses LHC panels, SC only, 24-fiber
<b>Wall-Mountable Connector Center</b>							
WC4	WCC-048	12 x 20.3 x 3.25	8	FDC Unit		Provider door	Wall-mountable, uses standard FDC Unit panels
WC7	WCC-072	12 x 20.3 x 3.25	12	FDC Unit		Provider door	Wall-mountable, uses standard FDC Unit panels
<b>Wall Distribution Center</b>							
WD1	WDC-001	12.7 x 17.2 x 3	4	FDC Unit	4 Type 2R 2 Type 4R	Provider door	Wall-mountable, uses standard FDC Unit panels
WD2	WDC-002	12.7 x 17.2 x 4	4	FDC Unit	4 Type 2R 2 Type 4R	Provider door	Wall-mountable, uses standard FDC Unit panels
WD6	WDC-006	15.5 x 19 x 4	4	LDC		Provider door	Wall-mountable, uses standard LDC panels and B-size Raychem splice trays
<b>Wall Interconnect Center</b>							
WI4	WIC-024	9.25 x 8.5 x 4.6	4	WIC	2 Type 2R 1 Type 4R		Wall-mountable
<b>Wall-Mountable Connector Housing</b>							
WH2	WCH-02P	9.25 x 13.25 x 3.25	2	CCH	2 Type 2R 1 Type 4R	Provider door	Wall-mountable
WH4	WCH-04P	13.5 x 16.1 x 4.1	4	CCH	8 Type 2R 4 Type 4R	Provider door	Wall-mountable
WHC	WCH-12P	13.5 x 22.5 x 5.1	12	CCH	12 Type 2R 6 Type 4R	Provider door	Wall-mountable

# Fiber Optic Hardware with Factory-Installed Pigtailed

An Evolant™ Solutions Product

Corning  
Cable Systems

## Ordering Information (continued)

- 2** Select total fiber count (0-99 fibers, enter number; 99+, enter alphanumeric from Table A).

**Examples:**

72 = 72-fiber  
E4 = 144-fiber  
M6 = 216-fiber

- 3** Select number of fibers required per panel; see Table B for panel capacity based on connector type.

**Examples:**

06 = 6-fiber  
12 = 12-fiber

- 4** Select adapter/connector code.

**Single-mode, Ultra PC (RFL ≤ -55 dB)**

3C = SC/UPC, ceramic insert adapter  
59 = SC/UPC Duplex, ceramic insert  
11 = FC/UPC, metal insert adapter  
19 = ST/UPC, ceramic insert adapter (FDC® Unit and HDF only)  
6T = ST/UPC, threaded ceramic insert  
98 = MT-RJ  
A9 = LC/UPC Duplex, ceramic insert

**Single-mode, Angled PC (RFL ≤ 70 dB)**

6C = SC/APC, ceramic insert adapter, simplex  
21 = FC/APC, metal insert adapter  
66 = SC/APC Duplex, ceramic insert adapter

**Multimode**

39 = SC/PC, metal insert adapter  
56 = SC/PC, composite adapter  
50 = ST/PC, ceramic insert adapter  
5T = ST/PC, threaded ceramic insert adapter  
25 = ST/PC, composite insert adapter (FDC Unit and HDF only)  
2T = ST/PC, threaded composite insert adapter  
17 = FC/PC, metal insert adapter  
34 = FDDI/ST, ceramic insert  
27 = ESCON®/ST, ceramic insert  
57 = SC Duplex, metal insert  
91 = SC Duplex, composite insert  
97 = MT-RJ  
A7 = LC/UPC Duplex, metal insert  
A8 = LC/UPC Duplex, ceramic insert  
E4 = LC/UPC Duplex, ceramic insert, laser-optimized 50 um multimode fiber  
E6 = SC/UPC Simplex, ceramic insert, laser-optimized 50 um multimode fiber  
E7 = SC/UPC Duplex, ceramic insert, laser-optimized 50 um multimode fiber

Note: ST = ST® Compatible

- 5** Select pigtail length in meters. (1 m = 3.281 ft; 0-9 meters, enter number; 9+, enter first two digits of alphanumeric code from Table A).

**Examples:**

3 = 3 m  
A = 10 m  
F = 15 m

- 6** Select mode of operation.

R = Single-mode  
C = Multimode (50/125)  
K = Multimode (62.5/125)  
S = Laser-optimized multimode (50 µm)

- 7** Select pigtail type.

H = Jacketed MIC® Sub-unit Cable, Enhanced OptiStrip™ Buffered Fiber  
J = Ribbon  
N = OptiStrip Buffered Fiber, single-fiber 900 µm  
S = Laser-optimized 50 µm multimode fiber

- 8** Select number of splice trays. (0-9 trays, enter number; 9+ trays, enter first two digits of alphanumeric code from Table A).

**Examples:**

6 = 6 trays  
C = 12 trays

Note: See Table C for splice tray capacity and splice-type information.

- 9** Select splice tray type; see Chart C for a selection of splice tray options available (if no splice tray, enter 0).

Verify splice tray compatibility and capacity with the information listed in Section 1.

If trays are to be ordered separately, enter a “2” for reserved 0.2-in-tall capacity or a “4” for reserved 0.4-in-tall tray capacity within the housing.

- 10** Select lock option (where available).

L = Locking (see Note)  
0 = No lock (see Note)

Note: Units ordered with the locking feature indicated will be shipped with one lock installed on the cable entry or provider side door for wall-mountable hardware and on the front door for rack-mountable hardware.

Additional lock kits for hardware items featuring the possibility of dual locking doors may be ordered using the part number below:

HDWR-LOCK-KIT



# Fiber Optic Hardware with Factory-Installed Pigtails

An Evolant™ Solutions Product

Corning  
Cable Systems

## Ordering Information (continued)

---

**Table A**  
**Codes for Over 9 or 99**

A_ = 10_	AN = 460
B_ = 11_	AP = 470
C_ = 12_	AQ = 480
D_ = 13_	AR = 490
E_ = 14_	AS = 500
F_ = 15_	AT = 510
G_ = 16_	AU = 520
H_ = 17_	AV = 530
J_ = 18_	AW = 540
K_ = 19_	AX = 550
L_ = 20_	AY = 560
M_ = 21_	AZ = 570
N_ = 22_	BA = 580
P_ = 23_	BB = 590
Q_ = 24_	BC = 600
R_ = 25_	BD = 610
S_ = 26_	BE = 620
T_ = 27_	BF = 630
U_ = 28_	BG = 640
V_ = 29_	BH = 650
W_ = 30_	BJ = 660
X_ = 31_	BK = 670
Y_ = 32_	BL = 680
Z_ = 33_	BM = 690
AA = 340	BN = 700
AB = 350	BP = 710
AC = 360	BQ = 720
AD = 370	BR = 730
AE = 380	BS = 740
AF = 390	BT = 750
AG = 400	BU = 760
AH = 410	BV = 770
AJ = 420	BW = 780
AK = 430	BX = 790
AL = 440	BY = 800
AM = 450	BZ = 810

*“I” and “O” are not used.*

*Lengths from 100 to 339, use single letter plus number (1 to 9).*

**Examples**

E4 = 144 m  
A5 = 105 m  
M6 = 216 m  
T9 = 279 m

*Lengths over 339 m can be ordered only in 10-m increments. Use double letters.*



# Fiber Optic Hardware with Factory-Installed Pigtails

An Evolant™ Solutions Product

Corning  
Cable Systems

## Ordering Information (continued)

**Table B – Maximum Fiber Counts per Panel and Connector Type**

Panel Type	SC Simplex	SC Duplex	Connector Type			
			FC	ST	MT-RJ	LC Duplex
ACH	12	N/A	6	6	N/A	24
HCP	6	N/A	6	6	N/A	12
ADB	8	N/A	N/A	N/A	12	16
CCH	12	12	12	12	24	24
ECL	8	12	6	6	N/A	16
LDC	8	6	6	6	N/A	16
FDC	12	12	6	6	N/A	24
FHP	12	12	12	12	N/A	24
HDF	24	N/A	24	24	48	48
LDS	6	N/A	N/A	N/A	N/A	12
LHS	12	N/A	N/A	N/A	N/A	24
LHR	12	N/A	N/A	N/A	N/A	24
LHP	12	N/A	N/A	N/A	N/A	24
LRP	6	N/A	N/A	N/A	N/A	12
LTS	18	N/A	N/A	N/A	36	36
MTX	12	N/A	12	8	N/A	24
WIC	8	6	6	8	16	16

Note: ACH = ACH™ Unit, ECL = Eclipse® Hardware, FDC = FDC® Unit, ST = ST® Compatible

### Part Number Example

**WBT 12 P 06 - 3C - 3 R J 1 D L**  
**1 2 3 4 5 6 7 8 9 10**

- 1 = WBT, WBT-012 housing
- 2 = 12, total fiber count is 12 fibers
- 3 = 06, use 6-fiber panels
- 4 = 3C, terminate with SC/UPC connectors
- 5 = 3, 3-m pigtail
- 6 = R, single-mode
- 7 = J, ribbon pigtail
- 8 = 1, one splice tray
- 9 = D, M67-110 tray
- 10 = L, locking version



# Fiber Optic Hardware with Factory-Installed Pigtailed

An Evolant™ Solutions Product

Corning  
Cable Systems

## Ordering Information (continued)

**Table C – Splice Tray Specification Information**

Splice Tray Type From Section 1	Splice Tray Part Number	Tray Dimensions L x W x D (in)	Splice Protection Type	Splice Capacity	Splice Tray Code For Pigtailed Part Number <sup>1</sup>	Notes
					2	Splicing capacity reserved for 0.2-in-tall trays – trays not included
					4	Splicing capacity reserved for 0.4-in-tall trays – trays not included
2S	M67-041	11.7 x 3.9 x 0.2	Fusion – RTV	12	A	
2R	M67-060	6.9 x 3.5 x 0.2	Fusion – RTV	12	C	
4R	M67-110	6.9 x 3.5 x 0.4	Heat-Shrink Fusion (HSF) Heat-Shrink Mass Fusion (HSMF)	12 HSF, 6 HSMF (72-fiber)	D	
2S	M67-048	11.7 x 3.9 x 0.2	Heat-Shrink Fusion	12	F	
2R	M67-061	7.3 x 3.5 x 0.2	Mechanical	6	J	
2R	M67-068	7.3 x 3.5 x 0.2	Heat-Shrink Fusion	6	K	
4S	M67-076	11.7 x 3.9 x 0.4	Heat-Shrink Fusion (HSF) Heat-Shrink Mass Fusion (HSMF)	12 HSF, 6 HSMF (72-fiber)	L	
4S	M67-078	11.7 x 4.3 x 0.4	Heat-Shrink Fusion (HSF) Heat-Shrink Mass Fusion (HSMF)	24 HSF, 12 HSMF (144-fiber)	P	
4S	M67-118	11.7 x 3.9 x 0.4	Splice Pak™ (Q-pack) Splice Protector	24	S	Splice holder on opposite end of entry
LGX®-comp	09-004-66		Mechanical	24	T	For LGX-compatible units only
4A	UST-024	13 x 4.25 x 0.4	Fusion (HSF), Heat Shrink Mass Fusion (HSMF), Mechanical	24, 6 HSMF	U	Splice Holder Assortment supplied for all splice protection types – assembly required
4S	M67-113	11.7 x 3.9 x 0.4	Splice Pak (Q-pack) Splice Protector	12	X	
LGX-comp	09-035-18		Heat-Shrink Mass Fusion	12 (144-fiber)	Y	For LGX-compatible units only
LGX-comp	09-004-67		Heat-Shrink Fusion	24	Z	For LGX-compatible units only

<sup>1</sup> Enter value in Option 9 of part number sequence.

2S = 0.2-in-tall standard length trays (11.7 in length)

2R = 0.2-in-tall reduced length trays (6.9 in length)

4S = 0.4-in-tall standard length trays (11.7 in length)

4R = 0.4-in-tall reduced length trays (6.9 in length)

4A = 0.4-in-tall long splice trays (13 in length)

# Fiber Optic Hardware with Factory-Installed Pigtailed

An Evolant™ Solutions Product

Corning  
Cable Systems

# Fiber Optic Hardware with Factory-Installed Pigtailed

An Evolant™ Solutions Product

Corning  
Cable Systems

# Fiber Optic Hardware with Factory-Installed Pigtailed

An Evolant™ Solutions Product

Corning  
Cable Systems

**Corning Cable Systems LLC • PO Box 489 • Hickory, NC 28603-0489 USA**

**1-800-743-2675 • FAX: +1-828-901-5973 • International: +1-828-901-5000 • <http://www.corning.com/cablesystems>**

Corning Cable Systems reserves the right to improve, enhance and modify the features and specifications of Corning Cable Systems' products without prior notification. FDC and MIC are registered trademarks of Corning Cable Systems Brands Inc. Eclipse is a registered trademark of Corning Cable Systems LLC. Evolant, OptiStrip, Pretium and Splice Pak are trademarks of Corning Cable Systems Brands Inc. ACH is a trademark of Corning Cable Systems LLC. Discovering Beyond Imagination is a trademark of Corning Incorporated. LGX and ST are registered trademarks of Lucent Technologies. ESCON is a registered trademark of International Business Machines Corporation. All other trademarks are the properties of their respective owners. Corning Cable Systems is ISO 9001 certified. ©2003 Corning Cable Systems. All rights reserved. Published in the USA.  
EVO-379-EN / November 2003 / 2.5M



**CORNING**  
Discovering Beyond Imagination