



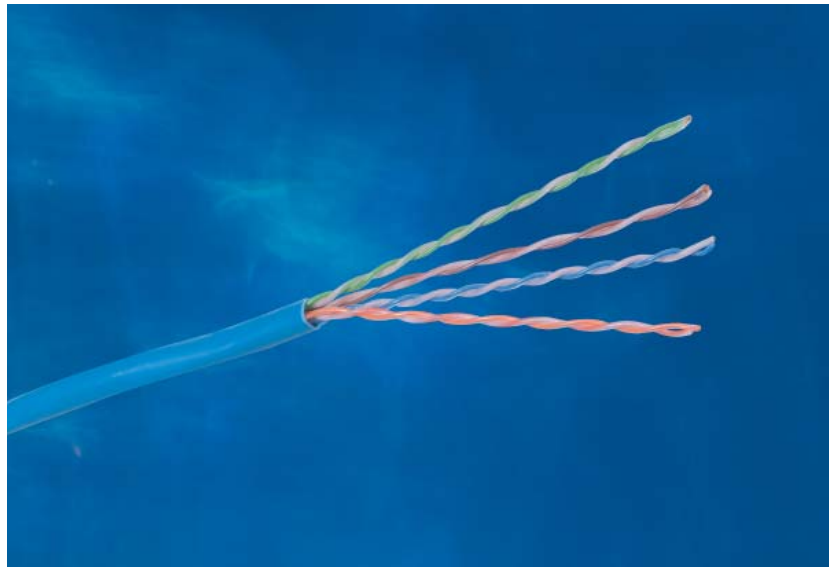
# HUBBELL SpeedGain Category 5E Cable

Sweep Tested from 1-400 MHz.

Guaranteed Headroom Over TIA and ISO Category 5e Requirements.

Reverse Sequential Footage Marking.

Backward Compatible to Category 5 and 3.



### SPECIFICATIONS

- ◆ **Conductor:** 24 AWG solid bare copper.
- ◆ **Insulation:** CMP: FEP, CMR: Polyolefin.
- ◆ **Pairing**
  - 1: Blue + White/Blue
  - 2: Orange + White/Orange
  - 3: Green + White/Green
  - 4: Brown + White/Brown
- ◆ **Cabling:** Four unshielded twisted pairs.
- ◆ **Jacket**
  - CMP: Low-Smoke PVC.
  - CMR: PVC.

Hubbell's **SPEEDGAIN**® Category 5E cable provides considerable margin above all electrical transmission performance requirements specified in TIA/EIA-568-B.2 and ISO/IEC 11801 (2nd edition) standards.

Hubbell Premise Wiring's component compliant, high-performance **SPEEDGAIN**® connectivity (jacks, panels, cords, blocks) with **SPEEDGAIN**® Category 5E cable and the result is a link/channel that ensures maximum system performance.

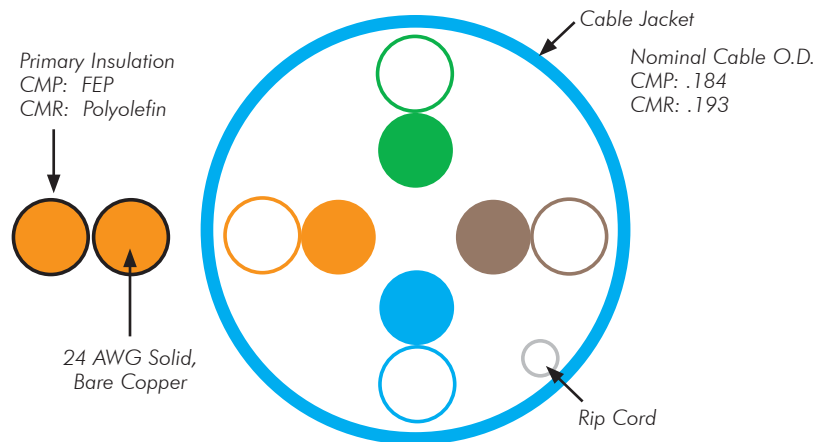
### STANDARDS/VERIFICATIONS

- ANSI/TIA/EIA-568-B.2 Category 5e component specifications.
- IEEE 802.3af (PoE).
- UL Listed.
- NEC Article 800 compliant.

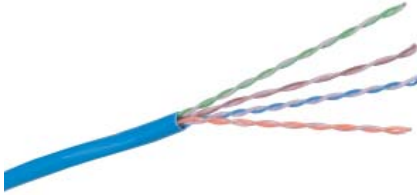
### APPLICATIONS

- ▲ Ethernet: 10/100/1000BASE-T.
- ▲ 155 Mbps ATM.
- ▲ 4/16 Mbps Token Ring.
- ▲ Analog and Digital VoIP.
- ▲ 100 Mbps TP-PMD.

### CABLE FEATURES



**ORDERING INFORMATION**



**SPEEDGAIN® Category 5e, 4-Pair, UTP Cable**

Color	Catalog No. Riser		Catalog No. Plenum	
	Spool	REELEX*	Spool	REELEX*
Blue	<b>C5EPSRB</b>	<b>C5EPRRB</b>	<b>C5EPSPB</b>	<b>C5EPRPB</b>
Gray	<b>C5EPSRGY</b>	<b>C5EPRRGY</b>	<b>C5EPSPGY</b>	<b>C5EPRPGY</b>
White	<b>C5EPSRW</b>	<b>C5EPRRW</b>	<b>C5EPSPW</b>	<b>C5EPRPW</b>
Yellow	<b>C5EPSRY</b>	<b>C5EPRRY</b>	<b>C5EPSPY</b>	<b>C5EPRPY</b>

\* REELEX is licensed and patented by Windings Inc.

**SPEEDGAIN® SYSTEM PRODUCTS**

**SPEEDGAIN® Jacks, Category 5e**

**Order Information**

Catalog No. **HXJ5EXX**

- XX** = Color:  
**AL**' = Almond;  
**BK**' = Black;  
**B**' = Blue;  
**EI**' = Electric Ivory;  
**GL**' = Gold;  
**GY**' = Gray;  
**GN**' = Green;  
**OW**' = Office White;  
**OR**' = Orange;  
**P**' = Purple;  
**R**' = Red;  
**TI**' = Telco Ivory;  
**W**' = White;  
**Y**' = Yellow.



**SPEEDGAIN® Patch Panel, Category 5e**

**Order Information**

Description Catalog No.

- Universal **P5EXXU**  
**XX** = Ports  
**'24'** = 24-port, 1.75"H  
**'48'** = 48-port, 3.50"H  
**'96'** = 96-port, 7.00"H



**SPEEDGAIN® Patch Cords, Category 5e**

**Order Information**

Catalog No. **PCX5EXX\***

- XX** = Standard Color:  
**'BK'** = Black; **'B'** = Blue; **'GY'** = Gray;  
**'Y'** = Yellow

- \* = Standard Length:  
**'01'** = 1'; **'03'** = 3'; **'05'** = 5'; **'07'** = 7';  
**'10'** = 10'; **'15'** = 15'; **'20'** = 20'.



See page Full Line Catalog page for product options: color, size, length.

**TRANSMISSION SPECIFICATIONS - Worst Case**

TIA/EIA-568-B.2 Category 5e Compliant;  
 ISO/IEC 11801, 2nd ed.

Freq. (MHz)	Ins. loss (dB/100m)	NEXT loss (dB)	PSNEXT loss (dB)	ACR (dB)	PSACR (dB)	ELFEXT (dB)	PSELFEXT (dB)	Return loss (dB)
1	2.1	71.5	68.5	69.5	66.5	70.0	67.0	20.2
4	4.2	62.5	59.5	58.4	55.4	58.0	55.0	23.2
8	5.9	58.0	55.0	52.2	49.2	51.9	48.9	24.7
10	6.6	56.5	53.5	50.0	47.0	50.1	47.0	25.2
16	8.3	53.4	50.4	45.2	42.2	45.9	42.9	25.2
31.25	11.8	49.1	46.1	37.4	34.4	40.1	37.1	23.8
62.5	17.1	44.6	41.6	27.6	24.6	34.1	31.0	21.7
100	22.1	41.5	38.5	19.5	16.5	30.0	27.0	20.3
250*	32.0	37.8	35.7	-	-	21.7	18.9	18.1
350*	46.0	33.3	30.3	-	-	19.1	16.1	16.5
400*	47.9	32.5	29.5	-	-	18.0	15.0	16.1

\* Frequencies beyond the TIA and ISO requirements are for information only.



**Hubbell Premise Wiring**

HUBBELL INCORPORATED (Delaware)  
 14 Lord's Hill Road • Stonington, CT 06378-0901 • (860) 535-8326 • 800-626-0005  
 Fax: (860) 535-8328 • Internet site: <http://www.hubbell-premise.com>



**Worldwide Locations**

Hubbell Premise Wiring, Asia Pacific  
 Hubbell Canada Inc.  
 Hubbell Premise Wiring, Central America  
 Hubbell Premise Wiring, China  
 Hubbell Premise Wiring, Europe  
 Hubbell Premise Wiring, India  
 Hubbell Int'l. Inc., Korea Branch

852-2836-7131 Fax: 852-2836-7132  
 905-839-1138 Fax: 905-839-9108  
 506-309-4158 Fax: 506-260-1616  
 86-21-6374 2660 Fax: 86-21-6374 2799  
 44-01283 500500 Fax: 44-01283 500400  
 91-99001-03341  
 (82 2) 2607 1363 Fax: (82 2) 2603 7386

Hubbell Premise Wiring, Latin America  
 Hubbell de Mexico, S.A. de C.V.  
 Hubbell Premise Wiring, Middle East  
 Hubbell Premise Wiring, Puerto Rico  
 Hubbell-Taian Co., Ltd., Taiwan  
 Hubbell Premise Wiring, Venezuela

305-408-4501 Fax: 305-408-8201  
 (5255) 9151-9999 Fax: (5255) 9151-9989  
 971-4-393-4192 Fax: 971-4-393-4194  
 787-855-1075 Fax: 787-855-3265  
 886-2-2522-1862 Fax: 886-2-2522-1872  
 58-212-5156482 Fax: 58-212-6627258