

Section **D**



Enclosures

OPT-X® 1000 Fiber Optic Enclosures **D3**

OPT-X 1000 Fiber Optic Wall-Mounts **D6**

OPT-X 500 & 250 Fiber Optic Enclosures **D7**

Telecommunications Enclosures **D8**

Wireless Access Point Enclosures **D10**



Enclosures

Leviton's complete line of enclosures includes solutions for all types of installations from equipment room to zone to workstation. Choose from a wide selection of fiber optic enclosures, including Wall-mount and Rack-mount versions, plus telecommunications enclosures for zone cabling, and access point enclosures for wireless networks.

Related Products



FIBER OPTIC CONNECTORS AND QUICKPORT® ADAPTERS

Innovative, ST, SC, FC, MT-RJ and LC connectors, in mechanical or epoxy styles, plus QuickPort adapters. (Page A6).



FIBER OPTIC TOOL KITS

Fiber tool kits for SC, ST, FC, MT-RJ and LC, mechanical or epoxy connectors (Page H4).



QUICKPORT PATCH PANELS

Configure your own multi-media QuickPort patch panel (Page C7).



VERSI-DUCT™ SLOTTED DUCT SYSTEM

Versatile vertical and horizontal rack cable management system with an array of innovative accessories (Page F3).



FIBER OPTIC CABLE ASSEMBLIES

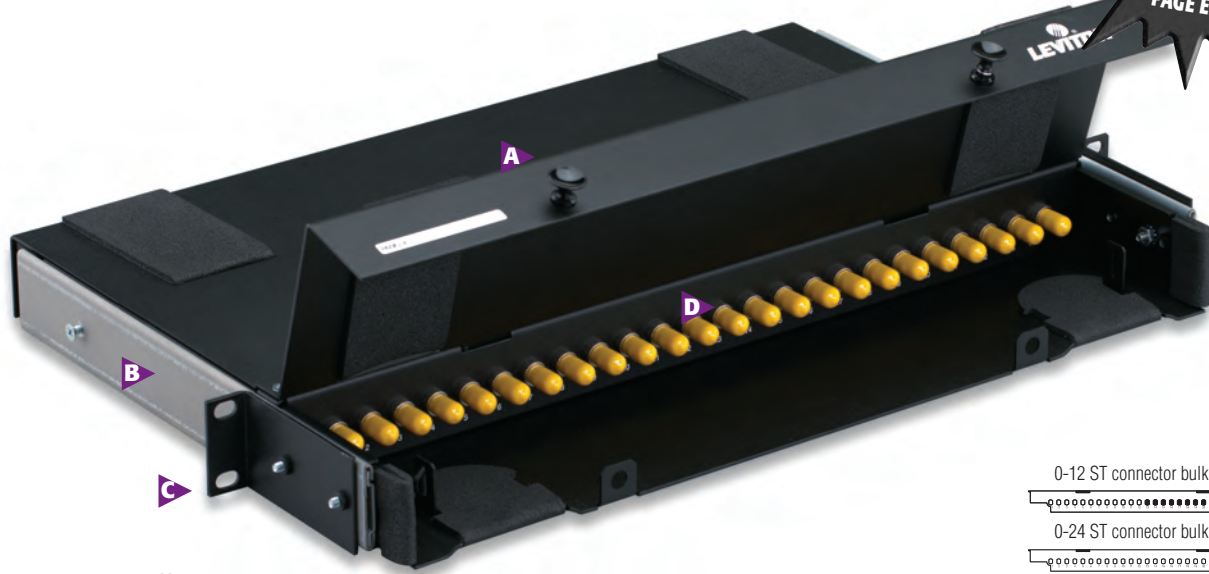
Extensive line of high-quality standard, hybrid and pigtail assemblies (Page E3).



DIMENSIONAL DIAGRAMS & GLOSSARY OF TERMS

Dimensional diagrams for fiberoptic, wireless, and telecommunications enclosures, as well as a complete glossary of terms, are available in our appendix section (Section X).

OPT-X® 1000 1RU FIBER OPTIC ENCLOSURES



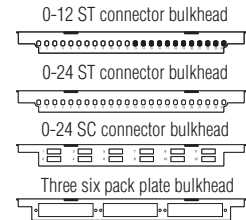
For Faster Installation Ask for Pre-Terminated Enclosures

A Front and rear tilt-up lids that provide unobstructed access to adapters and mounting plates.

B Slide rail option allows easy installation and re-entry regardless of equipment or enclosures above.

C Mounting brackets are reversible for mid- or flush-mounting in 19" racks.

D High-density adapter bulkhead houses up to 24 ST® or 12 duplex SC adapters. Another version accepts three six-fiber mounting plates; configure with ST, FC, SC, LC and MT-RJ or add a QuickPort plate to create a multimedia enclosure.



Opt-X 1000 Low-Profile Rack-Mount Enclosures (1RU) w/o Rails 1.75"H x 19.0"W x 12.0"D	
Description	Part Number
24 Fiber ST Bulkhead w/6 adapters	5R030-OAB
24 Fiber SC Bulkhead w/3 duplex adapters	5R030-OHB
12-48 Fiber, empty (accepts 3 adapter plates, sold sep.)	5R130-00N
12 Fiber, loaded w/ST adapters	5R230-OAB
24 Fiber, loaded w/6 duplex SC adapters	5R230-OHB
24 Fiber, unloaded, punched for ST adapters	5R330-OAA
24 Fiber, unloaded, punched for duplex SC adapters	5R330-OHA
24 Fiber loaded w/ST adapters	5R330-OAB
24 Fiber loaded w/12 duplex SC adapters	5R330-OHB
Add-On Slide Rail Kit	
Slide Rail Kit for 0-24 or 0-72 fiber Rack-Mount enclosures only	5S100-SLM
Replacement Door	
24 Fiber Rack-Mount Metal Replacement Door	5D000-1RM

Opt-X 1000 Low-Profile Rack-Mount Enclosures (1RU) w/Rails 1.75"H x 19.0"W x 12.0"D	
Description	Part Number
24 Fiber ST Bulkhead w/6 adapters	5P030-OAB
24 Fiber SC Bulkhead w/3 duplex adapters	5P030-OHB
12-48 Fiber empty (accepts 3 adapter plates, sold sep.)	5P130-00N
12 Fiber loaded w/ST adapters	5P230-OAB
24 Fiber loaded w/6 duplex SC adapters	5P230-OHB
0-24 Fiber unloaded, punched for ST adapters	5P330-OAA
0-24 Fiber unloaded, punched for duplex SC adapters	5P330-OHA
24 Fiber loaded w/ST adapters	5P330-OAB
24 Fiber loaded w/12 duplex SC adapters	5P330-OHB

LOADED = The enclosure's bulkhead contains the specified couplings.
UNLOADED = The enclosure includes a bulkhead which has openings for, but does not include, the specified couplings.
EMPTY = No bulkhead coupling plates are included.

Note: For mounting plates and accessories, see page E4.

Note: Custom lengths and configurations on pigtails available; call customer service for more information: 1-800-722-2082



OPT-X® 1000 2RU FIBER OPTIC ENCLOSURES



For Faster Installation Ask for Pre-Terminated Enclosures



A Front and rear tilt-up lids that provide unobstructed access to adapters and mounting plates.

B Room for up to 6 Mounting Plates, housing a wide variety of SC, FC, ST, LC and MT-RJ adapters. See fiber density chart on page E3.

C Horizontal entry ports in the front and back and vertical entry ports in the rear offer egress/ ingress for distribution of patch cables.

D Metal or smoked polycarbonate doors. Metal doors are available with or without a lock.

E Wall-mount or Rack-mount! Mid- or flush-mount the 2RU in any space on a standard 19" or 23" rack, or use the universal mounting brackets to flush mount on a wall.



E Wall mount or rack mount for maximum flexibility.



Opt-X 1000 Fiber Optic Enclosures (2RU) 3.5" H x 19.0" W x 12.0" D	
Description	Part Number
2RU Enclosure with Metal Door and one lock/key	5R440-00N
2RU Enclosure with Metal Door (no lock)	5R430-00N
2RU Enclosure with Poly Door (no lock)	5R460-00N
Replacement Doors	
Description	Part Number
2RU Replacement Metal Door	5D000-3RM
2RU Replacement Poly Door	5D000-3RP
Accessories	
Description	Part Number
12 Splice Ditel Splice Kit	5T000-00T
3M Fibrlock™ Splice Holder	5T000-3MT
AT&T Rotary Splice Holder	5T000-ATT
Lock and Key	5L000-LOK
Slide mounts (kit)	5S100-SLM
Fiber rings, 2 per pack, 2.5" diameter	5R100-OFR

PLEASE NOTE: All STOCK configurations of this rack-mount enclosure are sold 'empty,' or without any mounting plates installed. Capacity is dependent upon configuration of mounting plates as shown in note. Rack-mount enclosures DO include grounding/strain relief, grommets, labels, and the appropriate number of cable management rings.

Note: For mounting plates and accessories, see page E4.

Note: Custom lengths and configurations on pigtails available; call customer service for more information: 1-800-722-2082

OPT-X® 1000 3RU & 6RU FIBER OPTIC ENCLOSURES



For Faster Installation Ask for Pre-Terminated Enclosures

A Tilt-up rear door provides unobstructed access to the fiber loop.

B Reversible mounting brackets allow mounting on 19" or 23" industry standard equipment frames; move forward for flush mount positioning in NEMA enclosures.

C Front and rear doors drop down flat to act as a workshelf, or can be removed completely. Available in metal or smoked polycarbonate.

Includes 8 (3RU) or 16 (6RU) plastic blank mounting plates to inexpensively fill up any unused locations.

Houses up to 12 (3RU) or 24 (6RU) mounting plates for assorted fiber or multimedia applications. See chart on page E5.

Opt-X 1000 Rack-Mount Enclosures, 3 Rack Units High (3RU) 5.25" H x 19.0" W x 12.0" D [®]	
Description	Part Number
3RU, Empty with metal door, no lock	5R730-00N
3RU, Empty with metal door and one lock/key	5R740-00N
3RU, Empty with smoked polycarbonate door, no lock	5R760-00N
Opt-X 1000 Rack-Mount Enclosures, 6 Rack Units High (6RU) 10.5" H x 19.0" W x 12.0" D [®]	
Description	Part Number
6RU, Empty with metal door, no lock	5R930-00N
6RU, Empty with metal door and one lock/key	5R940-00N
6RU, Empty with smoked polycarbonate door, no lock	5R960-00N
Add-On Slide Rail Kit	
Slide rail kit for 3RU or 6RU fiber Rack-Mount enclosures only	5S100-SLM
Replacement Door	
3RU Rack-Mount replacement metal door	5D000-2RM
3RU Rack-Mount replacement smoked poly door	5D000-2RP
Add-on Lock and Key	
Add security to an existing door for this enclosure—simply remove the black plastic plug on the door front, and replace with lock mechanism.	
Lock and Key	5L000-LOK



PLEASE NOTE: All STOCK configurations of this rack-mount enclosure are sold 'empty,' or without any mounting plates installed. Capacity is dependent upon configuration of mounting plates as shown in note. Rack-mount enclosures DO include grounding/strain relief, grommets, labels, 8 or 16 blank plastic mounting plates, and the appropriate number of cable management rings.

Note: For mounting plates and accessories, see page E4.

Note: Custom lengths and configurations on pigtailed available; call customer service for more information: 1-800-722-2082 .



OPT-X® 1000 WALL-MOUNT FIBER OPTIC ENCLOSURES



SEE FIBER
DENSITY
CHART,
PAGE E5

For Faster Installation Ask for Pre-Terminated Enclosures

A

Doors are L-shaped for maximum access to couplings through the open sidewall.

Door options:

- Split with single lock
- Split with two locks (custom option)
- Solid with single lock
- Solid without lock

B

Unique cable management ring is adjustable and stackable to simplify fiber loop installation, bend radius compliance, and future maintenance/additions. Stores 3 meters of 900 micron fiber per adapter.

C

Houses 2 (small), 4 (medium) or 12 mounting plates for assorted fiber or multi-media applications. See chart on page E5.

D

Sidewall cutout gives completely unobstructed access to the mounting plates when door is open (covered when door is closed).



Opt-X 1000 Small Wall-Mount Enclosures 8.0" H x 13.0" W x 3.5" D [®]

Description	Part Number
Small, Empty with solid metal door, no lock, holds no splice trays	5W110-00N
Small, Empty with split metal door and one lock/key, holds no splice trays	5W120-00N
Small, Empty with solid metal door and lock/key, holds no splice trays	5W170-00N

Opt-X 1000 Medium Wall-Mount Enclosures 14.0" H x 12.0" W x 5.25" D [®]

Medium, Empty with solid metal door, no lock, holds 6 splice trays	5W310-00N
Medium, Empty with split metal door and one lock/key, holds 6 splice trays	5W320-00N
Medium, Empty with solid metal door and one lock/key, holds 6 splice trays	5W370-00N

Opt-X 1000 Large Wall-Mount Enclosure 17.0" H x 15.0" W x 5.25" D [®]

Description	Part Number
Large, Empty with solid metal door, no lock, holds 6 splice trays	5W710-00N
Large, Empty with split metal door and one lock/key, holds 6 splice trays	5W720-00N
Large, Empty with solid metal door and lock/key, holds 6 splice trays	5W770-00N

Add-on Lock and Key

Add security to an existing metal enclosure door. Simply remove the black plastic plug on the door front, and replace with lock mechanism.

Lock and Key	5L000-LOK
--------------	-----------

PLEASE NOTE: All STOCK configurations of this wall-mount enclosure are sold 'empty,' or without any mounting plates installed. Capacity is dependent upon configuration of mounting plates shown on page E4. The wall-mount enclosures DO include grounding/strain relief, grommets, labels, and the appropriate number of cable management rings. Large Wall-Mount Enclosure includes 8 blank plastic mounting plates.

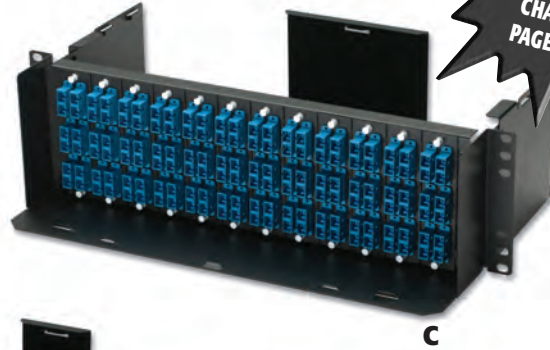
Note: For mounting plates and accessories, see page E4.

Note: Custom lengths and configurations on pigtailed available; call customer service for more information: 1-800-722-2082.

Sold by:



OPT-X® 500 1RU, 2RU, AND 3RU FIBER OPTIC ENCLOSURES



For Faster Installation Ask for Pre-Terminated Enclosures

▶ One-piece removable cover protects and conceals patch cords and allows for complete accessibility to the back of the enclosure.

▶ Mounting brackets allow for installation on any rack space.

▶ Stores 3 meters of 900 micron tight buffered fiber per adapter.

▶ Multiple bend radius and cable management features including 2 cable tie down features in front, and 4 in back, protect and organize cables.



1RU with cover



2RU with cover



3RU with cover

Opt-X 500 Fiber Enclosure "H x 19.0"W x 12.0"D	
Description	Part Number
[A] 1RU, empty with metal cover, no lock	5R1UA-A03
[B] 2RU, empty with metal cover, no lock	5R2UA-A06
[C] 3RU, empty with metal cover, no lock	5R3UA-A12

OPT-X 250 1RU FIBER OPTIC PANEL



▶ Perfect for small to medium installations with excellent flexibility at a competitive price.

▶ Utilizes minimum rack space while providing space for up to three (3) adapter plates or splice trays (more splice trays if no obstructions).

▶ Two fiber management rings easily attach to low profile mounting clips for customized positioning. Includes multiple bend radius and cable management features.

▶ Open back allows easy access and management in all directions.

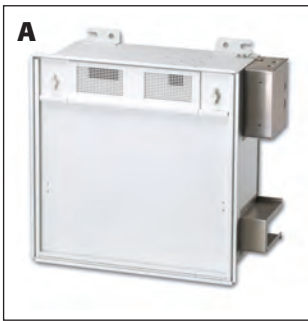
▶ Mounting brackets allow panel to be installed on any rack space.

Opt-X 250 Fiber Panel 1.75"H x 19.0"W x 7.7"D	
Description	Part Number
[A] 1RU, empty with no metal cover, no lock	5R1UE-A03



TELECOMMUNICATIONS ENCLOSURES FOR ACTIVE ZONE CABLING

Leviton's telecommunications enclosures add flexibility and manageability to cabling infrastructure. Active ceiling enclosures install flush with the drop ceiling for a clean, unobtrusive look. Recessed panels in doors may be fitted with a ceiling tile. Fully hinged, drop down doors support installed equipment and open to face the technician for safe, easy access. Manufactured of aluminum, all ceiling enclosures are plenum rated and include two edge-protected cable access ports with fire rated foam sealing kits.



2' x 2' Active Ceiling Enclosure

[A] Accommodates one removable assembly with total 2RU of active electronics and up to 5RU (2U+1U+2U) of 19" rack-mount patch panels and wire management. Units are AC Power ready and include a 9 CFM fan with transformer capable of providing more than 100 air changes per hour. UL Listed.



2'x2' Active Ceiling Enclosure 12"H x 24"W x 24"L [®]	
Description	Part Number
[A] Active Ceiling Enclosure, 2' x 2'	Z1000-AC2



2' x 4' Active Ceiling Enclosure

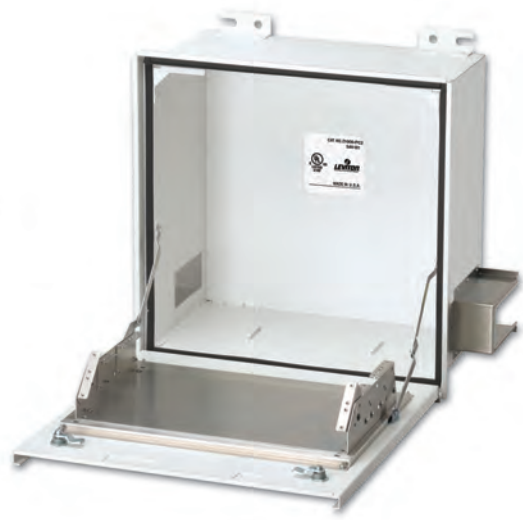
[B] For hubs, switches and patch panels in high density areas, these enclosures house two removable rack-mount assemblies each with 4RU (total 8RU) of mounting space for active components and up to 10RU divided (2U+1U+2U) of 19" rack-mount patch panels and wire management. Units are AC Power ready and include a 9 CFM fan with transformer capable of providing more than 100 air changes per hour. UL listed.

2'x4' Active Ceiling Enclosure [®]	
Description	Part Number
[B] Active Ceiling Enclosure, 2' x 4'	Z1000-AC4

[C] Accessories

Enclosure Accessories	
Description	Part Number
[C] Foam kit for zone ceiling enclosures	Z1000-FM1
Chrome Lock Kit	Z1000-LOK
Replacement Keys (2)	Z1000-KEY



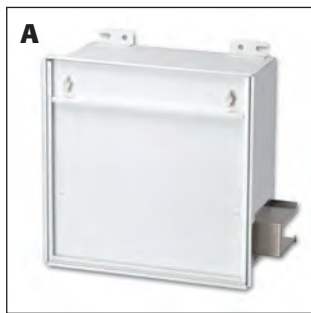


TELECOMMUNICATIONS ENCLOSURES FOR PASSIVE ZONE CABLING

These easy-to-install enclosures provide flexible consolidation point placement in the floor or ceiling. Manufactured of aluminum, enclosures are plenum rated and include fire-rated foam sealing kits.

2' x 2' Passive Ceiling Enclosure

[A] For consolidation points within the ceiling, these enclosures accommodate up to 5RU (2U+1U+2U) of 19" rack-mount patch panels and or wire management. Enclosures install flush with the drop ceiling and recessed panels in doors may be fitted with a ceiling tile for a clean, unobtrusive look. Fully hinged, drop down doors support installed equipment and open to face the technician for safe, easy access. UL listed.



2'x2' Passive Ceiling Enclosure [®]	
Description	Part Number
[A] Passive Ceiling Enclosure, 2' x 2'	Z1000-PC2

2' x 2' Passive Raised Floor Enclosure

For consolidation points in air handling spaces under 8" deep raised floors, this enclosure holds two 4RU (8U total) racks to accommodate any combination of standard 19" rack-mountable patch panels or wire management. Rotating patch panel mounting locations provide easy access to rear of patch panels for easy terminations. UL listed

2'x2' Passive Raised Floor Enclosure [®]	
Description	Part Number
Passive Raised Floor Enclosure, 8" depth	Z1000-PF2





WIRELESS ACCESS POINT ENCLOSURES

Wireless Access Point Ceiling Enclosure, 10" Deep

[A] Mount these enclosures into standard 2' x 2' ceiling tiles for a clean look and easy access. Each unit is designed to house a variety of wireless access points. Single edge-protected access port includes a fire-rated foam sealing kit, making it suitable for air handling spaces. Doors are fully hinged and lockable. The enclosure is painted white to blend with ceiling tiles. Multiple door faceplates, including a blank one, are sold separately to accommodate a variety of wireless equipment. UL listed.



Wireless Access Point Ceiling Enclosure, 4" Deep

[B] This ceiling mount enclosure accommodates one wireless access point or bridge. The removable door mounted bracket supports equipment up to 10-1/2" wide by 5-1/2" deep by 1-7/8" high. Fully hinged door is lockable for security and is stamped with two obround holes centered 5" apart allowing antennas to extend below the drop ceiling. UL listed.



Wireless Access Point Ceiling Enclosures [®]	
Description	Part Number
[A] Wireless Access Point Ceiling Enclosure, 10" Depth, w/o Faceplate	W1000-WCE
[B] Wireless Access Point Ceiling Enclosure, 4" Depth	W1000-WC0

Faceplates

Wireless Access Point Enclosure Faceplates	
Description	Part Number
Blank Faceplate (Fits 10" Wireless Access Point Enclosure)	W1000-F01
Faceplate for Cisco Aironet™ 350 (Fits 10" Wireless Access Point Enclosure)	W1000-F02
Faceplate for Cisco Aironet 1100 (Fits 10" Wireless Access Point Enclosure)	W1000-F03
Faceplate for Cisco Aironet 1200 (Fits 10" Wireless Access Point Enclosure)	W1000-F04

Wireless Access Point Wall-Mount Enclosure

[C] Constructed of rugged steel with a lock assembly these enclosures are perfect for areas where there is limited floor or ceiling space and a need for security. Inside space accommodates a Cisco® Aironet® 350 or equivalent equipment sized 9-1/2" wide by 6-1/2" high by 2-3/4" deep. UL listed.

Wireless Access Point Wall-Mount Enclosure [®]	
Description	Part Number
[C] Wireless Access Point Wall-Mount Enclosure	W1000-WW0

