



MODULAR ADAPTERS



BRIDGING ADAPTERS

Modular Bridging Adapters which mount between two 50-pin connectors on 25-pair inside wiring cables permitting access to designated cable pairs. Each unit consists of a grey plastic housing in which the male and female 50-pin connectors are wired together on a pin-to-pin basis. Five 6-position modular jacks are

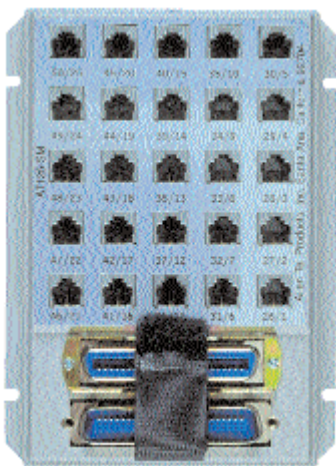
mounted at the top of the unit and bridged across the cable pairs as indicated below on the ordering information table. Each jack is marked to indicate the modular pin number and the connector pin number to which it is connected.



ORDERING INFORMATION

Part No.	Mod Jack Pin*	Miniature Ribbon Assembly Contact Pairs				
		Modular Jack Position				
		1	2	3	4	5
AT450A	4	(1,26)(2,27)	(4,29)(5,30)	(7,32)(8,33)	(10,35)(11,36)	(13,38)(14,39)
AT450-SM1	2	(1,26)	(2,27)	(3,28)	(4,29)	(5,30)
AT450-SM2	2	(6,31)	(7,32)	(8,33)	(9,34)	(10,35)
AT450-SM3	2	(11,36)	(12,37)	(13,38)	(14,39)	(15,40)
AT450-SM4	2	(16,41)	(17,42)	(18,43)	(19,44)	(20,45)
AT450-SM5	2	(21,46)	(22,47)	(23,48)	(24,49)	(25,50)
AT450-SM6	4	(1,26)(2,27)	(3,28)(4,29)	(5,30)(6,31)	(7,32)(8,33)	(9,34)(10,35)
AT450-SM7	4	(11,36)(12,37)	(13,38)(14,39)	(15,40)(16,41)	(17,42)(18,43)	(19,44)(20,45)
AT450-SM8	4	(21,46)(22,47)	(23,48)(24,49)			
AT450-SM10	6	(1,26)(2,27)(3,28)	(4,29)(5,30)(6,31)	(7,32)(8,33)(9,34)	(10,35)(11,36)(12,37)	(13,38)(14,39)(15,40)
AT450-SM11	6	(16,41)(17,42)(18,43)	(19,44)(20,45)(21,46)	(22,47)(23,48)(24,49)		
AT450-SM12	6	(1,26)(2,27)(3,28)	(4,29)(2,30)	(7,32)(2,33)	(10,35)(2,36)	(13,38)(2,39)

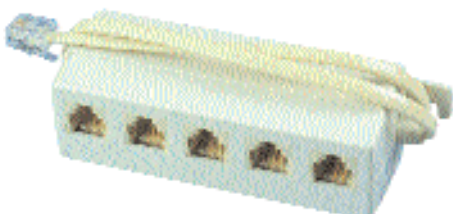
*Number of pins in jack



BRIDGING ADAPTER

Provides input-output connection (bridging) for 25-pair cable. Each unit consists of 25 - 6-position, 2-conductor (RJ11) jacks wired to 2 - 25-pair connectors (one male and one female) in standard tip-ring sequence for series connection. For use where space does not allow the use of patch panels. Ideal as a patch panel using patch cords to make & change connections. E/W Velcro strap to insure a secure connection.

AT125-SM



MODULAR ADAPTER

Converts a single Modular Jack to five Modular Jacks. Designed to allow several telephones or a combination of telephone sets and ancillary devices to be used on a single telephone line. It is equipped with a 1 ft., 4-conductor modular cord and five 6-position, 4-contact modular jacks.

AT150

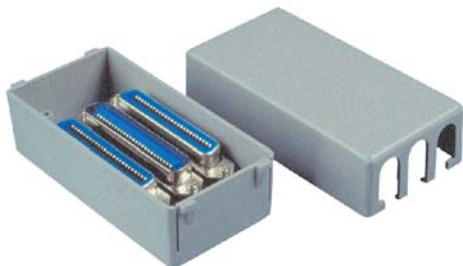




MODULAR ADAPTERS

BRIDGING ADAPTERS

Assemblies consisting of combinations of three 25-pair ribbon plugs (P-male) and/or connectors (C-female) mounted in a rugged grey thermoplastic housing with cover. The plugs and connectors are strapped together on a pin-for-pin basis (bridged). Permits connecting two 25-pair cables across a single plug or connector terminated 25-pair cable.



- AT19252-L1 (C-P-C)**
- AT19252-L2 (P-C-P)**
- AT19252-L3 (P-P-P)**
- AT19252-L4 (C-C-C)**



ADAPTERS

A very convenient series of adapters that permit a single line telephone set, answering device, auto-dialer or other ancillary equipment to be connected to an existing 25-pair ribbon connector. Each unit consists of a grey plastic housing e/w 6-position modular jack and a male 50-pin connector. The jack on all units is 4-conductor except the AT153AM-06 which is 6-conductor. Connections are made from the jack to the 50-pair connector as per table:



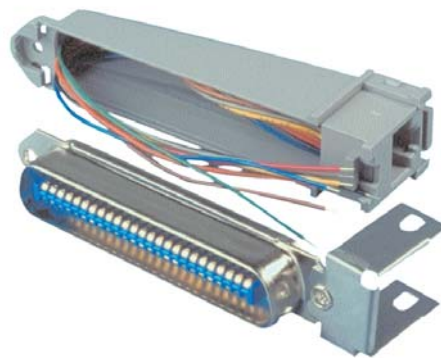
Part No. Connection Code

	R	Y	G	BK	W	BL
AT153AM-01	26	27	1	2		
AT153AM-02	23	24	48	49		
AT153AM-03	50	49	25	24		
AT153AM-05	1	2	26	27		
AT153AM-06	26	27	1	2	50	25



ADAPTER KITS

AT153K Series Adapter Kits consist of a 25-pair (50-cond.) male ribbon connector in a plastic housing. The Jacks are e/w 7" color coded stranded leads. The leads may be field soldered to any of the contacts on the connector in order to meet your requirements.



- AT153K-M6**
(6 pos., 6 cond. Mod. Jack)
- AT153K-M8**
(8 pos., 8 cond. Mod. Jack)



MODULAR ADAPTERS

Consists of a 50-pin male connector and an 8-position, 8-conductor non-keyed modular jack. Each adapter has internal wiring from the 8-position modular jack to terminals of the 50-pin connector. The units allow a single line telephone set, ancillary device or electronic key set equipped with an 8-conductor, non-keyed modular cord to be connected without rewiring. The pairs appearing at the modular jack and the associated contacts on the 50-pin connector are tabulated as per table.



Part No. Cable Pairs Tips Contacts Ring Contacts

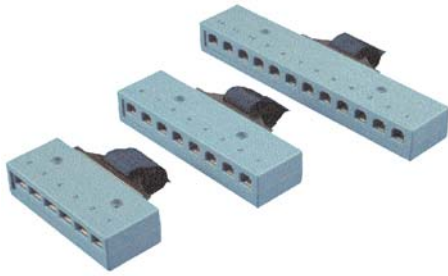
AT259A	1-4	26-29	1-4
AT259B	5-8	30-33	5-8
AT259C	16-17, 21-22	41-42, 46-47	16-17, 21-22





MODULAR ADAPTERS

ADAPTERS, MULTILINE



A complete series of modular adapters designed to provide a connection between 50-pin connector cables and 4, 6 or 8-conductor line cords. Each unit consists of either a male or a female 50-pin plug or connector and 6, 8 or 12-modular jacks as indicated above. Each jack is clearly marked to identify its associated line circuit. Available with wiring for 10 BASE-T, 258A or other configurations. E/w velcro strap to insure a secure connection.

- AT2608F** (Female Connector, 8-6 Cond., 6 Pos. Jacks)
- AT2608M** (Male Plug, 8-6 Cond., 6 Pos. Jacks)
- AT2806F** (Female Connector, 6-8 Cond., 8 Pos. Jacks)
- AT2806M** (Male Plug, 6-8 Cond., 8 Pos. Jacks)
- AT2812FTBT** (Female Connector, 4 Cond., 12-8 Pos. Jacks-wired for TBT)
- AT2812MTBT** (Male Plug, 4 Cond., 12-8 Pos. Jacks-wired for TBT)

- AT2412F** (Female Connector, 12-4 Cond., 6 Pos. Jacks)
- AT2412M** (Male Plug, 12-4 Cond., 6 Pos. Jacks)



4 PRONG PHONE PLUG & ADAPTERS

ADAPTER



An integral assembly of a 4-prong plug and a 4-conductor modular jack in an ivory housing. Converts 4-prong jack to modular.

AT208

TELEPHONE PLUG



The AT283B 4-prong telephone plug is arranged with screw-type terminations for a 4-conductor, spade-ended telephone line cord and the associated strain relief fitting. It is designed to plug into the AT404B and similar 4-prong jacks.

AT283B

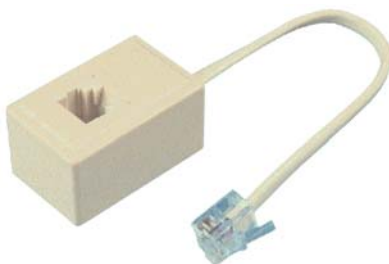
TELEPHONE JACK



The AT404B telephone plug is a plastic assembly containing 4-spring type sockets with screw terminals designed to terminate 4-conductor inside wiring cable and to mate with an AT283B plug. Screws are furnished for mounting the jack on baseboard or similar surface.

AT404B

FILTER



Consists of a modular cord stub 5" in length which terminates into a thermoplastic housing containing a 2-contact, 6-position modular jack. A double wound inductor is wired in series between the cord and a jack. Used for elimination of radio frequency interference especially in the AM broadcast station band.

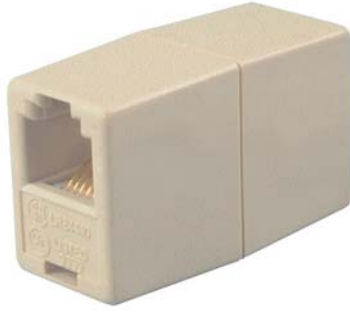
AT100





MODULAR ADAPTERS

IN-LINE COUPLER



An assembly of two back-to-back modular jacks providing a simple means of connecting two line cords together. The AT210-8-PP is wired pin-to-pin. Furnished in ivory color.



AT210-4
(4 Cond., 6 Pos.)

AT210-6
(6 Cond., 6 Pos.)

AT210-6-DEC
(6 Cond., 6 Pos., MMJ)

AT210-8
(8 Cond., 8 Pos.)

AT210-8-PP
(8 Cond., 8 Pos.)

MODULAR COUPLER



This unit is designed to allow two modular plug-ended line cords to be connected to one modular plug-ended line cord. The AT330-4 coupler consists of one 4-contact, 6-position jack with bridged connections to two 4-contact, 6 position jacks.



AT330-4

ADAPTER



An ivory adapter designed to route two lines connected to a modular jack to two modular line jacks. The unit consists of an integral assembly of an 8-conductor modular plug and two 6-position, 4-conductor modular jacks as shown in the wiring diagram.



AT400E

"T" ADAPTER

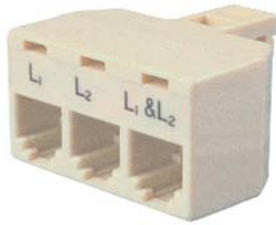


The AT464 "T" Adapter consists of one 4-conductor handset modular plug connected by means of a short section of handset cordage to an ivory assembly of two 4-conductor modular handset jacks. The unit provides means to use two handsets or headsets to the same device. It is used primarily for monitoring and instructional purposes.

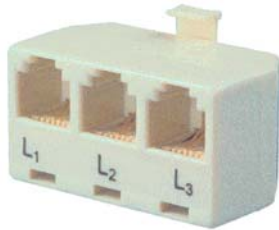
AT464



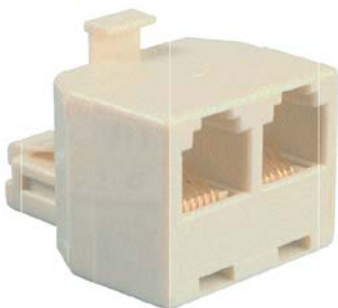
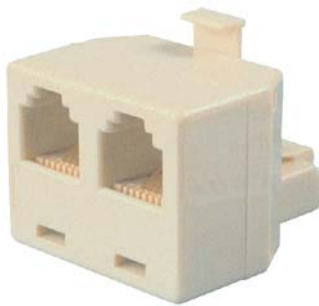
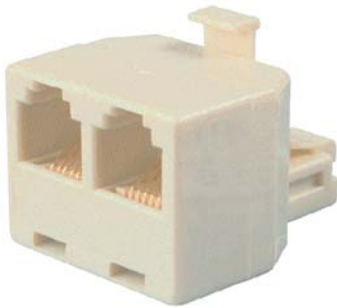
MODULAR ADAPTERS



AT173



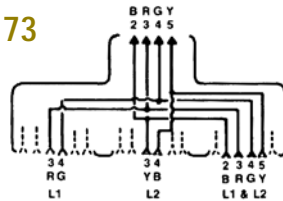
AT173A



ADAPTER

The AT173 Adapter is designed for use with a line jack arranged for a 2-line telephone system in accordance with USOC RJ14C and RJ14W. The unit consists of a 6-position, 4-contact modular plug internally wired to 3 modular jacks as per the wiring diagram at right. Two single line telephone sets and a 2-line set are accommodated.

AT173

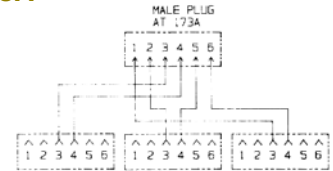


Wiring diagram for AT173

ADAPTER

The SE-173 Triplex Adapter is designed for use with two-line modular telephone systems. The Adapter has three modular jack outputs. The AT173A is similar in function to the AT173. However, the AT173A provides six contacts in the plug portion of the adapter, allowing connection of three single line phones to a single modular outlet. Labeled L1, L2 and L3.

AT173A



Wiring diagram for AT173A

"T" ADAPTER

Ivory adapters designed for connecting two telephones or auxiliary devices to one modular jack. The AT202-4 has the four contacts of each jack and plug wired in parallel. The AT202-6 is the same as the AT202-4 except that the two extra contacts on each jack are wired in parallel to each other. The AT203-8 is e/w a non-keyed, 8-conductor plug and two 8-conductor, keyed jacks. The keyed jacks will accept either keyed or non-keyed plugs.

AT202-4

(4 Cond., 6 Pos. Plug & 2-4 Cond., 6 Pos. Jacks)

AT202-6

(4 Cond., 6 Pos. Plug & 2-6 Cond., 6 Pos. Jacks)

AT203-8

(8 Cond., 8 Pos. Plug & 2-8 Cond., 8 Pos. keyed Jacks)

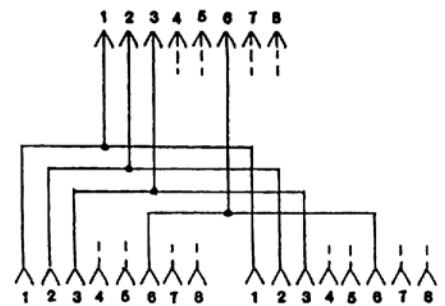


"T" ADAPTER

Ivory adapter designed to connect two devices to one modular jack, wired for "10 Base T" applications. It has an 8-position, 4-conductor plug and 2-8-position, 4-conductor jacks.



AT203-TBT

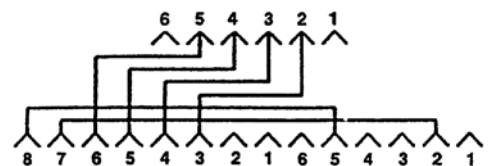


"T" ADAPTER

"T" adapter containing one 6-position, 4-conductor modular plug, an 8-position, 6-conductor and a 6-position, 2-conductor modular jack. It is used to provide auxiliary power to telephones.



AT304B





MODULAR ADAPTERS

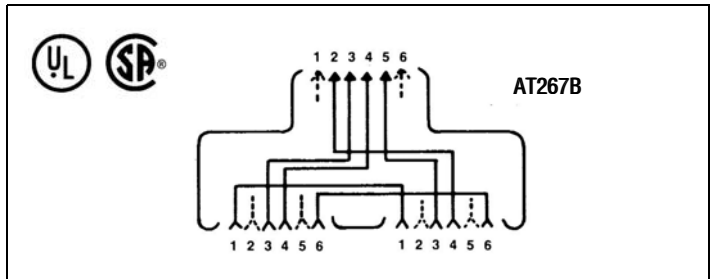
MODULAR "T" ADAPTERS

The AT267 Series of "T" Adapters are designed for connecting two telephones or associated equipment to an existing jack.

All units are Ivory in color.

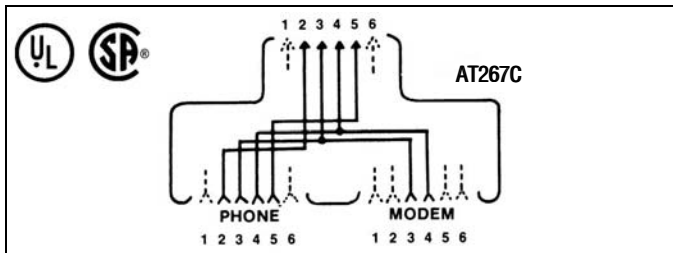


TYPICAL



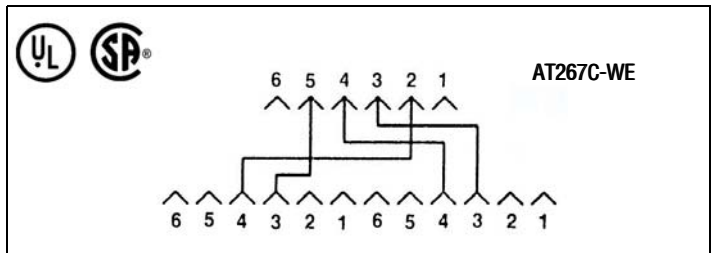
AT267B

E/w two 6-position, 4-conductor jacks and one 6-position, 4-conductor plug. Wired for connecting 2 telephones and/or ancillary devices to separate outside lines through a single 4 contact modular jack wired for terminating 2 lines. Ideal for use in semi-private hospital rooms or for adding a second line.



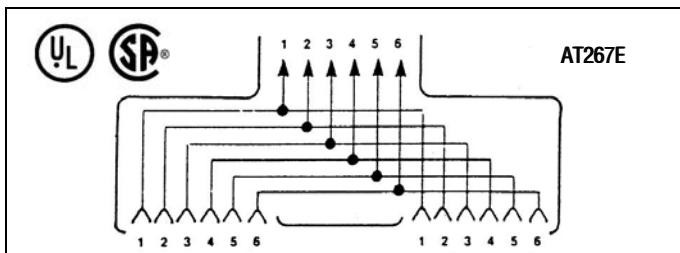
AT267C

E/w one 6-position, 2-conductor jack for Modem, one 6-position, 4-conductor jack for Voice transmission and one 6-position, 4-conductor plug with the tip and ring bridged to both jacks. Designed to combine voice and data transmission through a single modular jack.



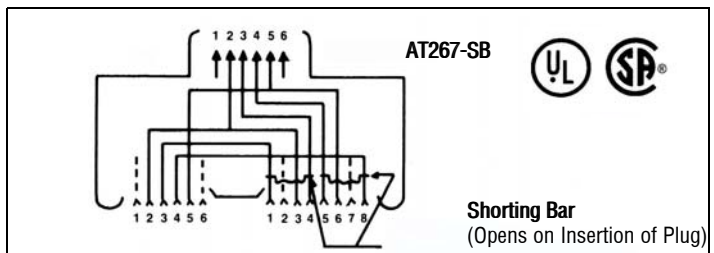
AT267C-WE

E/w two 6-position, 2-conductor jacks and one 6-position, 4-conductor plug. Designed to split 2 telephone lines from a single modular jack to 2 individual modular jacks. private hospital rooms or for adding a second line.



AT267E

E/w two 6-position, 6-conductor jacks and one 6-position 6-conductor plug. Provides connection for two 6-position, 6-conductor line cords wired to a single 6-position, 6-conductor modular plug.



AT267-SB

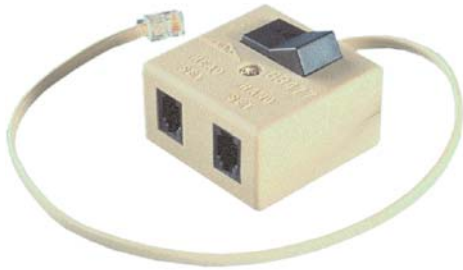
E/w one 6-position, 4-conductor jack, one 8-conductor jack with shorting bars on pins 1-4 and 5-8 and a 6-position, 4-conductor plug. Designed to permit quick connection of one telephone and one automatic dialer to the same line without changing the existing installation.





MODULAR ADAPTERS

ADAPTER

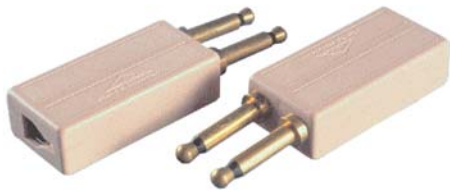


When installed on a telephone set, the GB477 Adapter provides a simple means of switching between handset and headset. The unit consists of a light ash plastic housing 2" square by 1 1/8" high, which contains a 2-position, throw-over switch wired to two 4-conductor, 4-position modular jacks and a 4-conductor, 8" modular cord and plug. Installation is easily made by removing the handset from the telephone and replacing it with the GB477 modular cord. Plug the handset and headset into

the appropriately marked jacks on the adapter. An adhesive strip is provided for mounting.

GB477

ADAPTER PLUG



A double tip-sleeve plug designed to fit standard 223A, 226A, etc., jacks mounted on 5/8" centers. The rear of the shell is equipped with a 4-contact, 4-position modular jack. Primary application is to connect modular equipped handsets or headsets to PBX consoles. (XX: -00, Black; -13, Beige)

GB478B-XX

ADAPTER



The GB480 Adapter adapts a headset or handset equipped with dual tip-sleeve, 4-conductor plug to a modular telephone or other device. The unit consists of a 2-foot retractile cord, an AT 4x4 4-conductor modular handset plug and a plastic housing containing 2 metal tip-sleeve jacks. The adapter may be easily mounted on its associated device by means of the two Velcro adhesive strips which are furnished. The housing is light ash color and measures 2.75"L x 1.5"W x 1.312"H.

GB480

ADAPTER



Adapts a device, like a handset or headset, with a dual tip-sleeve 4 conductor plug to a 6 pos., 4 cond. Modular Jack. This GB482 consists of a Lt. Ash plastic housing, which meets U.L. 94V.O, measuring 2.75"L x 1.5"W x 1.312"H and contains 2 tip-sleeve jacks and a 6 pos., 4 cond. Modular Jack.

GB482



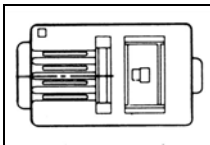


MODULAR ADAPTERS

MODULAR PLUGS FOR STRANDED WIRE



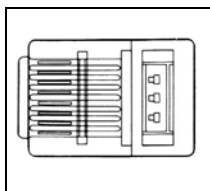
MODULAR PLUG



AT4X4 4-contact, 4-position plug for hand-set cords.

AT4X6 4-contact, 6-position plug for line cords

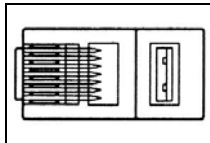
MODULAR PLUG



8-contact, 8-position plug for line cords and data applications.

AT8X8
AT8X8K (KEYED)

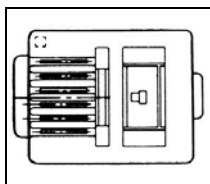
MODULAR PLUG



8-position, 8-conductor modular plug designed for round cordage such as the AT8CRB.

AT8X8RC

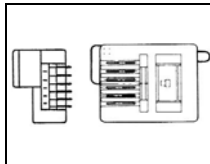
MODULAR PLUG



6-contact, 6-position plug for line cords.

AT6X6

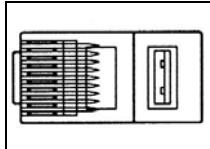
MODULAR PLUG



6-contact, 6-position DEC plug for line cords.

AT6X6DEC

MODULAR PLUG



10-contact, 10-position. Body size is same as AT8X8.

AT10X10

MODULAR PLUGS FOR SOLID WIRE

Easily Identified by Smoky Grey Color



FLAT CORD

MODULAR PLUG

4-contact, 4-position plug for 22/24GA solid wire.

AT4X4SC-2224

MODULAR PLUG

4-contact, 6-position plug for 22/24GA solid wire.

AT4X6SC-2224

MODULAR PLUG

6-contact, 6-position plug for 22/24GA solid wire.

AT6X6SC-2224

MODULAR PLUG

8-contact, 8-position plug for 22/24GA solid wire.

AT8X8SC-2224

ROUNDED CORD



MODULAR PLUG

6-contact, 6-position plug for Round Cord with solid 22GA or 24GA Wire.

AT6X6RCSC-2224

MODULAR PLUG

8-conductor plug for Round Cord with solid 24GA Wire.

AT8X8RCSC-24

NOTE: Modular Plugs meet F.C.C. Part 68 Requirement.

