

16 Series — Taper Nose — Up to 400 AMP,* 600V

*Refer to Ampacity Chart for all cable sizes on page JJ2

Female Terminal Connector (Cable Size: #2–4/0)



	ANGLE STYLE	OFFSET STYLE
COLOR	CAT. NO.	CAT. NO.
Black	16F21-E	16F22-E
White	16F21-W	16F22-W
Red	16F21-R	16F22-R
Blue	16F21-B	16F22-B
Green	16F21-G	16F22-G
Yellow	16F21-Y	16F22-Y
Orange	16F21-O	16F22-O
Brown	16F21-H	16F22-H



Panel Receptacle

COLOR	DOUBLE SET SCREW STYLE (CABLE SIZE: 1/0–4/0)		THREADED STUD STYLE (CABLE SIZE: #2–4/0)	
	MALE	FEMALE	MALE	FEMALE
CAT. NO.	CAT. NO.	CAT. NO.	CAT. NO.	CAT. NO.
Black	16R21-E	16R22-E	16R23-E	16R24-E
White	16R21-W	16R22-W	16R23-W	16R24-W
Red	16R21-R	16R22-R	16R23-R	16R24-R
Blue	16R21-B	16R22-B	16R23-B	16R24-B
Green	16R21-G	16R22-G	16R23-G	16R24-G
Yellow	16R21-Y	16R22-Y	16R23-Y	16R24-Y
Orange	16R21-O	16R22-O	16R23-O	16R24-O
Brown	16R21-H	16R22-H	16R23-H	16R24-H

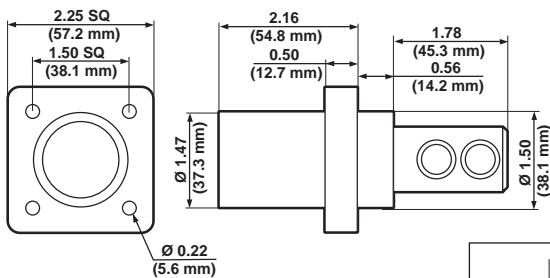
SPECIFICATIONS & FEATURES

- Leviton ECT 16 Series Taper Nose products are the connectors of choice for concerts, sound stages, movie making, television production, sporting events and conventions.

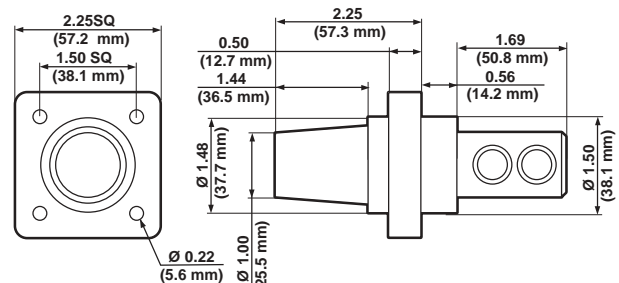
TESTING & CODE COMPLIANCE (PANEL RECEPTACLES ONLY)

- UL Listed E-13399
- CSA Certified LR-406
- NEMA 3R-Rated for use in outside locations

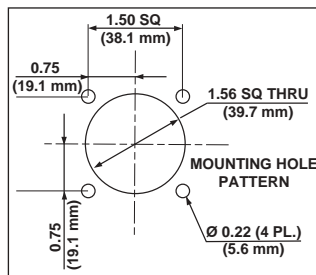
Threaded stud panel receptacles available in various lengths: Standard stud length is 3/4" — 1" stud length specify–10 suffix; 1.125" stud length specify–11 suffix; 1.25" stud length specify–12 suffix; 1.50" stud length specify–14 suffix; 2.00" stud length specify–20 suffix (16R24 only). Other stud lengths available.



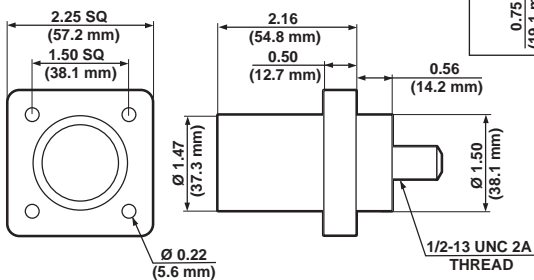
MALE DOUBLE SET SCREW PANEL RECEPTACLE—Cat. No. 16R21



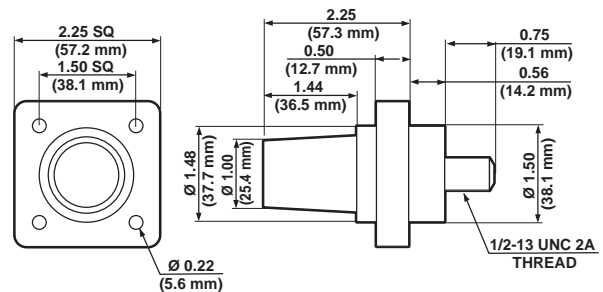
FEMALE DOUBLE SET SCREW PANEL RECEPTACLE—Cat. No. 16R22



PANEL CUTOUT DIMENSIONS



MALE THREADED STUD PANEL RECEPTACLE—Cat. No. 16R23



FEMALE THREADED STUD PANEL RECEPTACLE—Cat. No. 16R24