



Middle Atlantic Products

middleatlantic.com



# WR Series Roll Out Rotating System in Steel Host Enclosure

96-01005 / rev 4a / 07-06-09



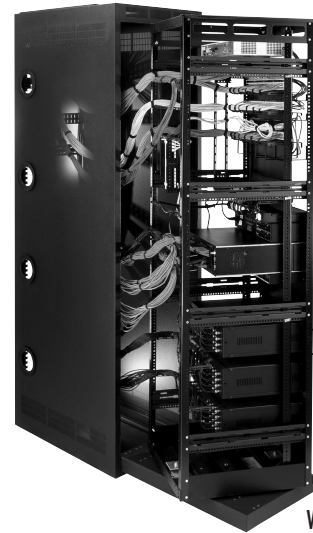
EIA/TIA Compliant



The WR Series enclosure is factory-assembled in its own host enclosure and allows entire bays of equipment to be placed up against walls or back-to-back, savings six square feet of floor space per rack!

## Features

- Rotating design allows enhanced access to rear equipment connections, simplifying wiring
- 26" and 36" useable depth, rack frame is housed in a 32-7/8" or 42-7/8" deep host enclosure
- Available in 44, 37 and 24 space rack frame heights
- Host enclosure can be pre-installed on-site while detachable rack frame is integrated with equipment off-site, simplifying installation
- 750 lb. weight capacity with proper weight distribution
- Effective cable management system provided. Slots in upper rack frame accommodate Velcro™ ties for additional cable management
- UL Listed in the US and Canada



WR Series

## Architects' and Engineers' Specifications

EIA compliant 19" roll out rotating system in steel host enclosure shall be Middle Atlantic Products model # WR-\_\_-\_\_ (refer to chart). Overall dimensions shall be 24" W x \_\_" H x \_\_" D (refer to chart). Rotating design of rack allows enhanced access to rear equipment connections, simplifying wiring. Rack will have a \_\_" useable depth and the rack frame shall be housed in a \_\_" depth host enclosure (refer to chart). Rack shall be of fully welded construction. Weight capacity shall be 750 lbs. when 1/2 of total equipment weight is mounted in lower 1/3 of the rack. Rack shall be constructed of the following materials: top and bottom (rack and outer frame) and roller carriage shall be 14-gauge steel; side panel and horizontal braces shall be 16-gauge steel. Rackrail shall be constructed of 11-gauge steel with tapped 10-32 mounting holes in universal EIA spacing with black e-coat finish and marked rackspaces. Rack shall have removable split rear knockout panels with 1/2", 3/4", 1" & 1-1/2" electrical knockouts installed in base and removable split rear knockout panels with 1/2", 3/4", 1" & 1-1/2" electrical knockouts and BNC knockouts for UHF / VHF antennae installed in top. Knockouts on sides to accommodate 4" electrical conduit and cable pass-through. Detachable rack frame allows for off-site integration. Roll out frame ships installed in rack. Rack shall be UL Listed in the US and Canada. Rack shall be RoHS EU Directive 2002/95/EC compliant. Rack shall be warrantee to be free from defects in material or workmanship under normal use and conditions for a period of three years.

### OPTIONS

- Front doors shall be 16-gauge steel and available as Model #FD-XX (solid), PFD-XX (plexi), (x = # of rackspaces of WR Rack)
- Zero space shelf kit shall be Middle Atlantic Products # SH-WR
- Rear rail kit shall be 11-gauge, 10-32 threaded, sold in pairs, hardware included part #WR-RR-XX (XX = # of rackspaces, refer to chart)
- Top panels, 16-gauge steel, in 7 styles, model # MW-ST (solid top), # MW-LVT (64% open area top), # MW-VT (vented top), MW-10FT (10" fan), # MW-6FT (three 6" fans), # MW-4FT (four 4-1/2" fans), # MW-DT (duct cool adapter)
- Integrated fan tops shall include a proportional speed thermostatic fan control and (4) 4-1/2" quiet fans, model # MW-4QT-FC, or (1) 10" fan, model # MW-10FT-FC
- WR rear access panel shall be constructed of 18-gauge steel and shall be part # WR-RAP-XX (XX = # of rackspaces)
- Grommet ring for 4" electrical knockout in side of WR shall be part # GK4, 4 pieces
- Gland grommet for 4" electrical knockout in side of WR shall be part # GK-4G, 4 pieces

customizable specification clips available at middleatlantic.com

## Exceptional Support & Protection Products™

US: New Jersey ▪ California ▪ Illinois ▪ Voice: 973-839-1011 Fax: 973-839-1976 ▪ middleatlantic.com  
Canada: Ontario ▪ British Columbia ▪ Voice: 613-836-2501 Fax: 613-836-2690 ▪ middleatlantic.ca

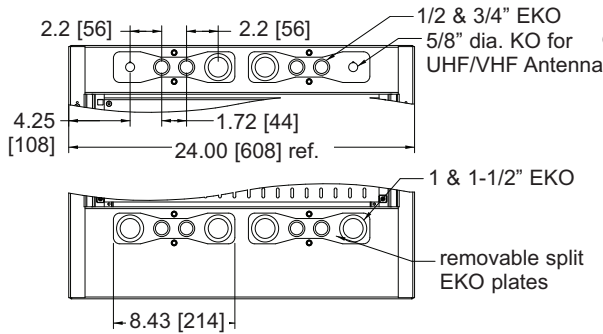
96-01005 / rev 4a / 07-06-09 / WR Series

# WR Series basic dimensions

All dimensions in inches unless otherwise noted [All dimensions in brackets are millimeters]

NOTE: Maximum clearance needed when rack is fully extended and rotated would be 61-1/4"

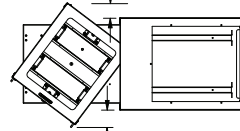
## TOP VIEW



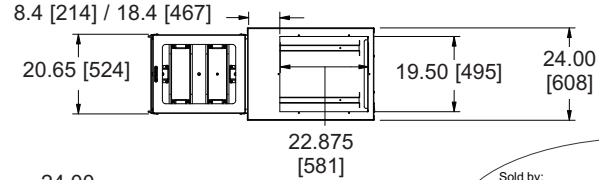
## TOP VIEW

(fully extended and rotated)

5.0 [126] / 8.0 [203] min. clearance for rotation (rear)

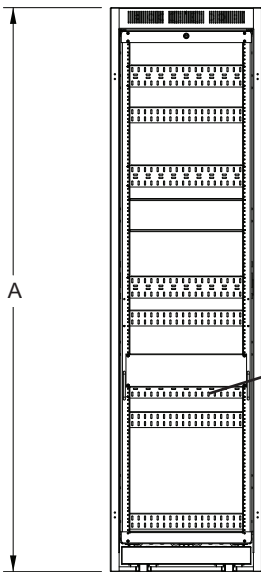


5.0 [126] / 3.5 [89] minimum clearance for rotation (both sides)

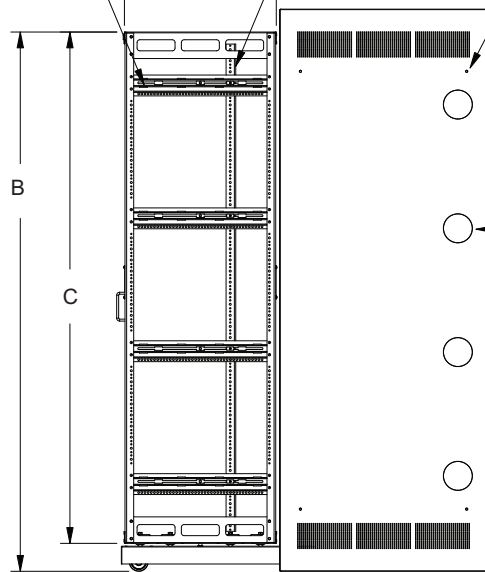


## BOTTOM REAR VIEW

power option fits C, E and G (WR-24-32) E and G (WR-37-32 and WR-37-42) E, G, N, P, R and T (WR-44-32 and WR-44-42)



24.00 [610] / 34.00 [864] optional rear rackrail (WR-RR-37 or WR-RR-44 WR-RR-24)



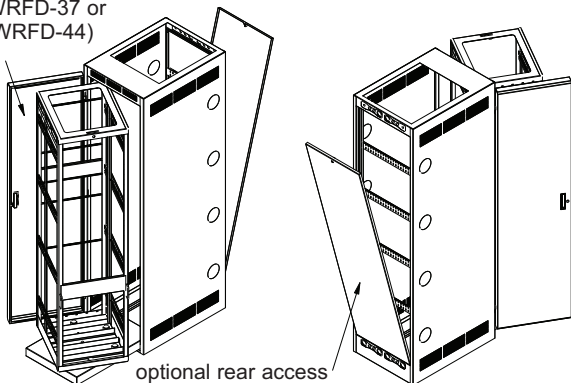
Sold by:



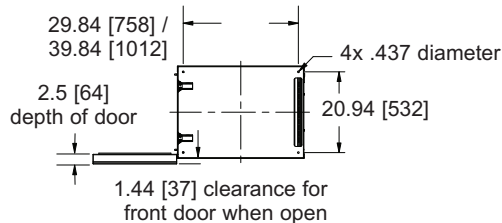
## SIDE VIEW

optional solid front door (WRFD-37 or WRFD-44)

## FRONT VIEW



D max rollout 32.875 [835] / 42.875 [1089] 57.875 [1470] / 77.875 [1978]



## BOTTOM VIEW

(floor mounting locations)

NOTE: When multiple dimensions are shown, first set of dimensions are for WR-XX-32 and second set are for WR-XX-42. Single set of dimensions are common to both racks

Part #	A Overall Height	B Rack Frame Height	C Useable Racking Height	D Max. Rollout	Useable Depth	Overall Depth	Rotation Angle
WR-44-32	88.86 (2257)	85.22 (2165)	77.00 (1956)	35.00 (889)	26.00 (660)	32.875 (835)	60°
WR-37-32	76.61 (1946)	73.00 (1854)	64.75 (1645)	25.00 (635)	26.00 (660)	32.875 (835)	60°
WR-24-32	53.85 (1368)	50.22 (1276)	42.00 (1067)	25.00 (635)	26.00 (660)	32.875 (835)	60°
WR-44-42	88.86 (2257)	85.22 (2165)	77.00 (1956)	35.00 (889)	36.00 (914)	42.875 (1089)	30°
WR-37-42	76.61 (1946)	73.00 (1854)	64.75 (1645)	25.00 (635)	36.00 (914)	42.875 (1089)	30°

