

## QuickPort® Modular Furniture Products

### APPLICATION

Leviton QuickPort Modular Furniture Faceplates with ID windows feature a designation window for a simple, more organized workstation identification. The faceplates accept QuickPort snap-in connectors and adapters to support a variety of voice/data applications in office environments.

### SPECIFICATION

#### Modular Furniture Faceplate — Standard

Modular furniture connector housing shall be a field-configurable faceplate providing from one to four flush-mount ports for a variety of snap-in connectors and adapters.

#### Modular Furniture Faceplate — Herman Miller

Modular furniture connector housing shall be a field-configurable flush-mount faceplate compatible with Herman Miller openings, and provide from one to four flush-mount ports for a variety of snap-in connectors and adapters.

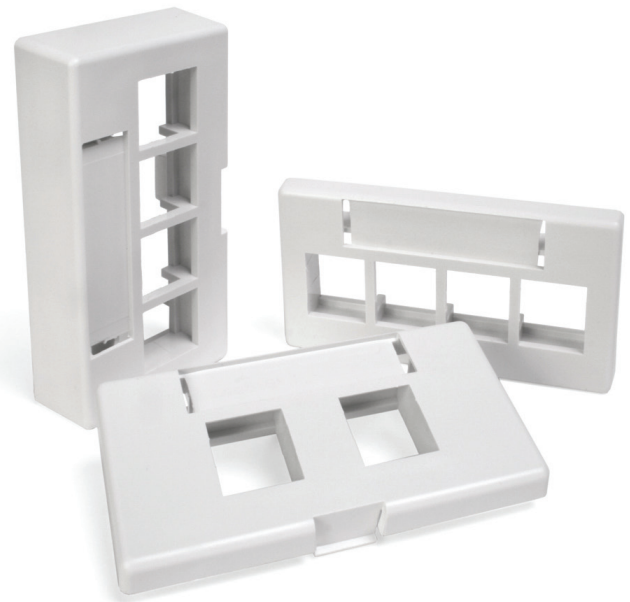
#### Modular Furniture Faceplate — Extended Depth

Modular furniture connector housing shall be a field-configurable faceplate extending 0.75 inch from the furniture raceway to facilitate fiber or copper cable bend-radius compliance, or to compensate for shallow raceway channels, and provide from one to four flush-mount ports for a variety of snap-in connectors and adapters.

All versions shall have a rattle-free fit and a single toolless release latch; be constructed of high-impact self-extinguishing plastic rated UL 94V-0; and be cULus Listed, and compliant with ANSI/TIA-568-C.0 specifications.

### FEATURES

- Faceplates accept Leviton QuickPort snap-in connectors
- Provides for work area commercial-grade telephone and data patching
- Compact design
- Meets ANSI/TIA-568-C.0 bend-radius requirements
- ID label and window kit included



49910-xxx

### DESIGN CONSIDERATIONS

- Specify 49910-Sxx (standard) or 49910-Hxx (Herman Miller) versions (dependent on furniture type)\*
- Specify 49910-Exx (same opening size as 49910-Sxx) for installation into shallow raceway channels (plate has 0.5-inch added depth)
- Specify port identification method (colored connectors, adapters, and designation labels available)
- Configure 1, 2, 3, or 4 active ports; spare ports can be filled with blanks for later use

\* xx = various configurations and colors, see page two.

### STANDARDS COMPLIANCE

- cULus Listed (UL 1863 & CAN/CSA-C22.2 No. 182.4)
- ANSI/TIA-568-C.0

### PHYSICAL SPECIFICATIONS

Dimensions: See page two

Materials: Bracket, ABS plastic, rated per UL 94V-0

### COUNTRY OF ORIGIN

Mexico

### WARRANTY INFORMATION

For a copy of Leviton product warranties, visit [www.leviton.com/warranty](http://www.leviton.com/warranty).

#### Leviton Network Solutions

2222 - 222nd St. SE  
Bothell, WA 98021-4416

tel 1-800-824-3005  
tel +1-425-486-2222  
appeng@leviton.com  
www.leviton.com

#### Asia / Pacific

T +1.631.812.6228  
E infoasean@leviton.com

#### Europe

T +44.0.1592.772124  
E customerservice@brand-rex.com

#### Canada

T +1.514.954.1840  
E pcservice@leviton.com

#### India / SAARC

T +971.4.886.4722  
E infoindia@leviton.com

#### Caribbean

T +1.954.593.1896  
E infocaribbean@leviton.com

#### Mexico

T +52.55.5082.1040  
E lsamarketing@leviton.com

#### China

T +852.2774.9876  
E infochina@leviton.com

#### Middle East & Africa

T +971.4.886.4722  
E lmeinfo@leviton.com

#### Colombia

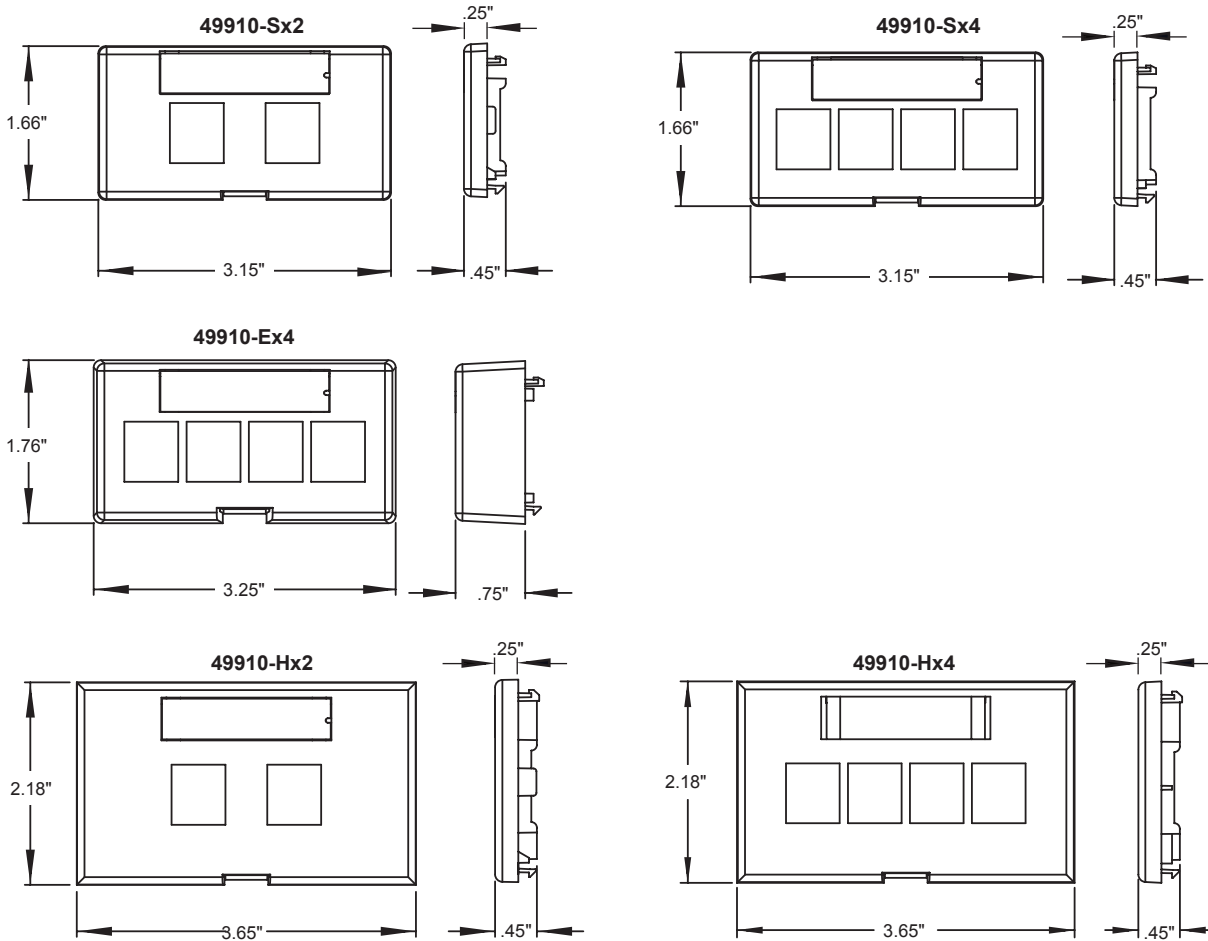
T +57.1.743.6045  
E infocolombia@leviton.com

#### South Korea

T +82.2.3273.9963  
E infokorea@leviton.com

**ELECTRONIC FILES**

For CAD files, typical specs, or technical drawings (.DXF, .DWG), visit [www.leviton.com](http://www.leviton.com).



**MODULAR FURNITURE FACEPLATES**

Description	WHITE	IVORY	GREY	BLACK
QuickPort® Modular Furniture Faceplate, 2 ports	49910-SW2	49910-SI2	49910-SG2	49910-SE2
QuickPort Modular Furniture Faceplate, 4 ports*	49910-SW4	49910-SI4	49910-SG4	49910-SE4
QuickPort Modular Furniture Faceplate, 4 port, extended depth*	49910-EW4	49910-EI4	49910-EG4	49910-EE4
QuickPort Modular Furniture Faceplate, 2 ports, Herman Miller*	49910-HW2	49910-HI2	49910-HG2	49910-HE2
QuickPort Modular Furniture Faceplate, 4 ports, Herman Miller*	49910-HW4	49910-HI4	49910-HG4	49910-HE4

Standard Modular Furniture Faceplates above fit openings of approximately 1.38" x 2.63".

4-port extended depth faceplate provides 0.5-inch added depth (0.75 inch total) for installation into shallow raceway channels, e.g., some powered channels.

Herman Miller faceplates above fit openings of approximately 1.88" x 2.98".

Standard and extended depth faceplates are compatible when used with Herman Miller G1189A Reducer available from Herman Miller dealers.

ID label and window kit included.

\*Includes one QuickPort blank insert



<b>Leviton Network Solutions</b> 2222 - 222nd St. SE Bothell, WA 98021-4416  tel 1-800-824-3005 tel +1-425-486-2222 appeng@leviton.com www.leviton.com	<b>Asia / Pacific</b> T +1.631.812.6228 E infoasean@leviton.com	<b>Canada</b> T +1.514.954.1840 E pcservice@leviton.com	<b>Caribbean</b> T +1.954.593.1896 E infocaribbean@leviton.com	<b>China</b> T +852.2774.9876 E infochina@leviton.com	<b>Colombia</b> T +57.1.743.6045 E infocolombia@leviton.com
	<b>Europe</b> T +44.0.1592.772124 E customerservice@brand-rex.com	<b>India / SAARC</b> T +971.4.886.4722 E infoindia@leviton.com	<b>Mexico</b> T +52.55.5082.1040 E lsamarketing@leviton.com	<b>Middle East &amp; Africa</b> T +971.4.886.4722 E lmeinfo@leviton.com	<b>South Korea</b> T +82.2.3273.9963 E infokorea@leviton.com