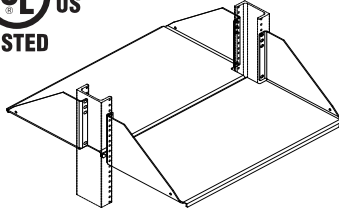
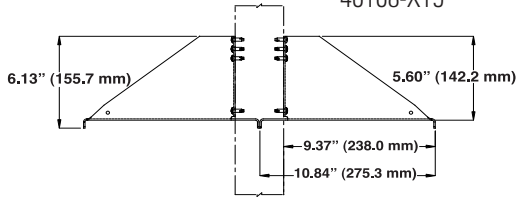


4U



40108-X19



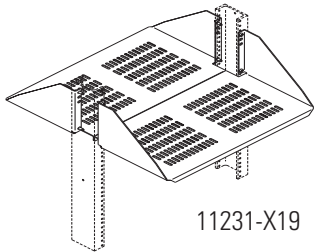
## Double-Sided Shelf

Provides centered loading for deeper and heavier equipment. Mounts on 3"D (80 mm) double-sided racks only. Mounting hardware not included. 19" version holds equipment up to 17.75"W x 21.5"D (450.9 mm x 546.0 mm), 23" version holds equipment up to 21.75"W x 21.5"D (552.5 mm x 546.0 mm). Made of strong, lightweight aluminum, supports up to 100 lb (45.4 kg). 19" version is UL Listed: File E140851; Category DUXR (US), DUXR7 (Canada) – Communications Circuit Accessory.

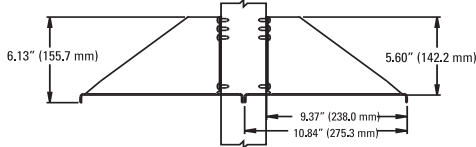
## Double-Sided Vented Shelf

Convenient for mounting any equipment requiring bottom ventilation, airflow perforations for increased airflow around components. Mounting hardware not included. 19" version holds equipment up to 17.75"W x 21.5"D (450.9 mm x 546.0 mm), 23" version holds equipment up to 21.75"W x 21.5"D (552.5 mm x 546.0 mm). Made of strong, lightweight aluminum, supports up to 100 lb (45.4 kg).

4U



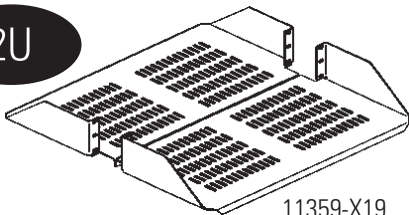
11231-X19



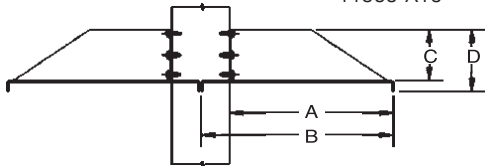
## Double-Sided Low Profile Vented Shelf

Reduced height design saves valuable rack space and perforated shelf keeps equipment cool, bottom ventilation for enhanced airflow circulation. Mounting hardware not included. 19" version holds equipment up to 17.75"W x 19.8"D (450.9 mm x 503.4 mm). Mounts on 3"D (80 mm) double-sided racks only. Made of strong, lightweight aluminum, supports up to 60 lb (27.2 kg).

2U



11359-X19



- A 8.53" (216.7 mm)
- B 10.0" (254.0 mm)
- C 2.91" (73.9 mm)
- D 3.53" (89.7 mm)

Part Number	Description	Shipping Weight lb (kg)
40108-X19	Double-Side Shelf, For 19" Rack	8 (3.6)
40108-X23	Double-Side Shelf, For 23" Rack	9 (4.1)
11231-X19	Double-Side Vented Shelf, For 19" Rack	8 (3.6)
11232-X23	Double-Side Vented Shelf, For 23" Rack	9 (4.1)
11359-X19	Low Profile Vented Shelf For 19" Rack	8 (3.6)
11359-X23	Low Profile Vented Shelf For 23" Rack	9 (4.1)

X=color: 1=Gray, 2=White, 5=Clear, 7=Black