

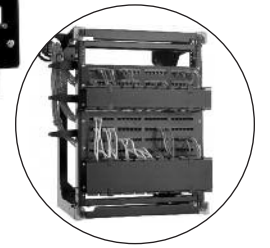
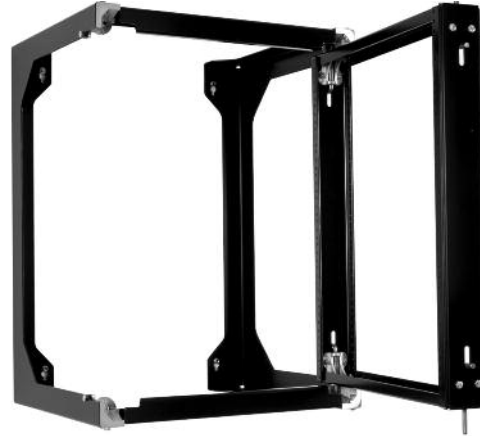
Product Cut Sheet

STANDARD SWING GATE RACK

The Standard Swing Gate Wall Rack provides easy access to the rear of equipment, making it the ideal choice for supporting patch panels and switches.



- Dual hinges opens to right or left, stopping in 90° position
- EIA-310-D compliant
- Universal 5/8" - 5/8" - 1/2" (15.9 mm - 15.9 mm - 12.7 mm) alternating hole pattern
- Rack-mount unit (U) spaces are marked and numbered
- Supports 100 lb (45.4 kg) of equipment in the open and closed position when securely mounted
- Load capacity can be increased to 150 lb (68 kg) on -X18 and -X25 models with optional Heavy Duty Swing Gate Kit
- Supports single-sided and double-side shelves
- Ships partially assembled with installation hardware
- Includes (50) #12-24 mounting screws; black painted racks ship with black screws, other racks ship with zinc screws
- UL Listed for US, NWIN, File E227626
- UL Listed for Canada, NWIN7, File E227626



Heavy Duty Swing Gate Kit

Increases the load bearing capacity of the -X18 and -X25 model Standard Swing Gate Wall Racks up to 150 lb (68 kg). Includes installation hardware and instructions.

Part Number	Description	Shipping Weight
12795-X01	Two Brackets	4 lb (1.8 kg)

X=color: 1=Gray, 2=White, 7=Black. Reduces usable depth of racks by 0.5" (12.7 mm)



Part Number	Usable Dimensions			Overall Dimensions			Shipping Weight
	Height	Width	Depth	Height	Width	Depth	
11790-X12	13U	19" EIA	11" (280 mm)	29.1" (740 mm)	21.7" (552 mm)	12.2" (310 mm)	22 lb (10.0 kg)
11790-X18	13U	19" EIA	17" (430 mm)	29.1" (740 mm)	21.7" (552 mm)	18.2" (463 mm)	24 lb (10.9 kg)
11790-X25	13U	19" EIA	24" (610 mm)	29.1" (740 mm)	21.7" (552 mm)	25.2" (641 mm)	42 lb (19.1 kg)
11791-X12	21U	19" EIA	11" (280 mm)	43.1" (1095 mm)	21.7" (552 mm)	12.2" (310 mm)	24 lb (10.9 kg)
11791-X18	21U	19" EIA	17" (430 mm)	43.1" (1095 mm)	21.7" (552 mm)	18.2" (463 mm)	26 lb (11.8 kg)
11791-X25	21U	19" EIA	24" (610 mm)	43.1" (1095 mm)	21.7" (552 mm)	25.2" (641 mm)	46 lb (20.9 kg)
11807-X12	27U	19" EIA	11" (280 mm)	53.6" (1362 mm)	21.7" (552 mm)	12.2" (310 mm)	25 lb (11.3 kg)
11807-X18	27U	19" EIA	17" (430 mm)	53.6" (1362 mm)	21.7" (552 mm)	18.2" (463 mm)	26 lb (11.8 kg)
11807-X25	27U	19" EIA	24" (610 mm)	53.6" (1362 mm)	21.7" (552 mm)	25.2" (641 mm)	50 lb (22.7 kg)
11792-X12	41U	19" EIA	11" (280 mm)	78.1" (1984 mm)	21.7" (552 mm)	12.2" (310 mm)	31 lb (14.1 kg)
11792-X18	41U	19" EIA	17" (430 mm)	78.1" (1984 mm)	21.7" (552 mm)	18.2" (463 mm)	33 lb (15.0 kg)
11792-X25	41U	19" EIA	24" (610 mm)	78.1" (1984 mm)	21.7" (552 mm)	25.2" (641 mm)	60 lb (27.2 kg)
11793-X12	13U	23"	11" (280 mm)	29.1" (740 mm)	25.7" (653 mm)	12.2" (310 mm)	23 lb (10.4 kg)
11793-X18	13U	23"	17" (430 mm)	29.1" (740 mm)	25.7" (653 mm)	18.2" (463 mm)	25 lb (11.3 kg)
11793-X25	13U	23"	24" (610 mm)	29.1" (740 mm)	25.7" (653 mm)	25.2" (641 mm)	43 lb (19.5 kg)
11794-X12	21U	23"	11" (280 mm)	43.1" (1095 mm)	25.7" (653 mm)	12.2" (310 mm)	25 lb (11.3 kg)
11794-X18	21U	23"	17" (430 mm)	43.1" (1095 mm)	25.7" (653 mm)	18.2" (463 mm)	27 lb (12.2 kg)
11794-X25	21U	23"	24" (610 mm)	43.1" (1095 mm)	25.7" (653 mm)	25.2" (641 mm)	47 lb (21.3 kg)
11808-X12	27U	23"	11" (280 mm)	53.6" (1362 mm)	25.7" (653 mm)	12.2" (310 mm)	26 lb (11.8 kg)
11808-X18	27U	23"	17" (430 mm)	53.6" (1362 mm)	25.7" (653 mm)	18.2" (463 mm)	28 lb (12.7 kg)
11808-X25	27U	23"	24" (610 mm)	53.6" (1362 mm)	25.7" (653 mm)	25.2" (641 mm)	51 lb (23.1 kg)
11795-X12	41U	23"	11" (280 mm)	78.1" (1984 mm)	25.7" (653 mm)	12.2" (310 mm)	32 lb (14.5 kg)
11795-X18	41U	23"	17" (430 mm)	78.1" (1984 mm)	25.7" (653 mm)	18.2" (463 mm)	34 lb (15.4 kg)
11795-X25	41U	23"	24" (610 mm)	78.1" (1984 mm)	25.7" (653 mm)	25.2" (641 mm)	61 lb (27.7 kg)

X=color: 1=Gray, 2=White, 7=Black

Overall Depth from Wall - Swing Gate Open 90°		
Part Number	19" EIA Racks	23" Racks
-X12	30.25" (769 mm)	34.25" (870 mm)
-X18	35.25" (921 mm)	40.25" (1023 mm)
-X25	43.25" (1099 mm)	47.25" (1201 mm)

800-834-4969 in U.S. & Canada • www.chatsworth.com



©2013 Chatsworth Products, Inc. All rights reserved. CPI, CPI Passive Cooling, GlobalFrame, MegaFrame, Saf-T-Grip, Seismic Frame, SlimFrame, TeraFrame, Cube-iT Plus, Evolution, OnTrac, Velocity and QuadraRack are federally registered trademarks of Chatsworth Products. eConnect and Simply Efficient are trademarks of Chatsworth Products. All other trademarks belong to their respective companies. 05/13