

DUAL-CHANNEL POWER AMPLIFIERS

Black Max™ Power Amplifiers X300, X450, X600



Bogen's **Black Max** amplifiers are designed to provide maximum performance in constant voltage speaker systems. Dual 70V transformerless outputs deliver exceptionally clean audio to speaker systems requiring two channels of audio up to 600W per channel, in a single package. High-efficiency class H amplifier design and the auto-sleep feature aid in reducing power consumption on continuously-powered systems. Rear-mounted volume controls, independent low cut filters on each input, and pluggable input terminal strips were specifically designed for the fixed install market. Built-in power sequencing for multiple Black Max amplifiers combats current in-rush problems of large audio systems. Massive power toroid and heat sinks; heavy 14-gauge chassis; patented Back-Slope™ AC voltage stabilization; clip limiters; and DC voltage, over-current, and thermal protection circuits make the Black Max both an efficient and reliable workhorse amplifier.

Product Features:

- Dual 70V amplifier channels
- 300W, 450W, or 600W per channel for 70V speaker systems
- Low noise, low distortion, and high slew rate
- High-efficiency class H amplifier design
- Transformerless direct drive outputs
- Electronically balanced high-impedance inputs
- Pluggable terminal strips for input connections
- Independent Low Cut filters for each channel
- Built-in power sequencing with other Black Max amplifiers
- Pluggable terminal strip for sequencing wiring
- Rear panel power sequencing status indicator
- DC, overload, short circuit, and thermal protection circuits
- Clip limiting circuits for speaker protection
- Power-saving sleep mode for intermittent use applications
- Status, Signal, and Limit indicators
- Back-Slope AC voltage stabilization for dependable performance over varying AC line voltages ($\pm 10\%$)
- Heavy-gauge steel chassis with cast aluminum front panel
- Rear-mounted volume controls
- Mounts in 2 rack spaces (3-1/2") directly stackable without need for extra space above or below
- 2 independent, continuously variable cooling fans for dependable and quiet operation
- Easily removable front fan grilles with filters
- Listed to UL Standard 60065 for US and Canada

Inside the Black Max™ X600



14 Large Output Transistors Per Channel for Extra Reliability



74,600µf of Capacitance Creates Enormous Amounts of Reserve Energy



The Black Max™ Transformer Weighs in at 17 lb. with 2 kVA of Power

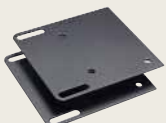


Two Independent Variable Speed Fans Provide for Quiet Cooling



Two Custom Extruded Heat Sinks Provide Heat Transfer from Output Transistors

Accessories



RPK86
Rear Rack Mounting Kit

Technical Specifications, Dimensions, and Weights can be found on Page 79

AMPLIFIER FEATURES CHART

Amplifier Output Power Rating/Channel	Model Numbers	Amp Channels	Input Types					Signal Processing					Music Muting				Night Ringer	Remote Volume	Output Meter	Mounting			Page Number						
			T8L Input [†] 600-ohm Balanced	MC Input [†] Lo-Z Balanced	AUX Input [†] Hi-Z Unbalanced	Balanced Inputs Hi-Z	Modular Inputs	Audio Enhancement	Loudness Contour	ALC	EQ	Bass/Treble	Tone Control	Variable Mute	Auto Mute	Manual Mute				Wall Mount	Shelf Mount	Rack Mount							
1.5W	GA2	1			1																							42	
5W	GAG	1			1																								42
10W	C10	1	1	2 (1)	0 (1)																								42
15W	TPU15A	1	1		1																								43
20W	C20	1	1	2 (1)	0 (1)																								42
35W	C35	1	1	2 (1)	1 (2)																								42
35W	GS35	1	0 (1)	6 (4)	1 (2)																								41
35W	TPU35B	1	1	1	1																								43
35W	V35	1	1	1	1																								38
60W	BPA60	1																											46
60W	C60	1	1	2 (1)	1 (2)																								42
60W	GS60	1	0 (1)	6 (4)	1 (2)																								41
60W	TPU60B	1	1	1	1																								43
60W	V60	1	1	1	1																								38
100W	C100	1	1	2 (1)	1 (2)																								42
100W	GS100	1	0 (1)	6 (4)	1 (2)																								41
100W/60W/20W	PM3180	3	0 (1)	2 (1)	4																								47
100W	TPU100B	1	1	1	1																								43
100W	V100	1	1	1	1																								38
100W	WV100	1	1	1	1																								40
125W	HTA125A	1																											46
150W	GS150	1	0 (1)	6 (4)	1 (2)																								41
150W	V150	1	1	1	1																								38
150W	WV150	1	1	1	1																								40
250W	GS250	1	0 (1)	6 (4)	1 (2)																								41
250W	HTA250A	1																											46
250W	TPU250	1	1	1	1																								43
250W	V250	1	1	1	1																								38
250W	WV250	1	1	1	1																								40
300/600W	M300	2/1	1	1	1																								45
300W	X300	2																											44
450/900W	M450	2/1	1	1	1																								45
450W	X450	2																											44
600/1200W	M600	2/1	1	1	1																								45
600W	X600	2																											44

- Feature Included
 - Features determined by type of module installed
 - Balanced input available with accessory plug-in transformer (TL100 or TL600)
 - Accessory kit required for mounting
 - Contact closure activation only
- * Some inputs are switch selectable. The number in parentheses shows the maximum number of inputs when switched.
- † BALAS balanced input module included standard; uses one modular input bay.

Specifications subject to change without notice.

AMPLIFIER SPECS CHART

Model Numbers	Output Power Rating/Channel	Channels	Frequency Response *	Distortion**	Speaker Outputs	AC Line Draw***	Dimensions	Product Weight
BP460	60W	1	20 Hz to 20 kHz	2% Max	8-ohm/25V, 16-ohm, 25VCT, 70V	180W	15-1/4" W x 3-1/2" H x 8-1/4" D	17 lb.
C10	10W	1	70 Hz to 16 kHz	1% Max	70V, 25V, 16-ohm, 8-ohm, 4-ohm	38W	11-3/8" W x 2-7/8" H x 7-3/8" D	5 lb.
C20	20W	1	70 Hz to 16 kHz	1% Max	70V, 25V, 16-ohm, 8-ohm, 4-ohm	50W	11-3/8" W x 2-7/8" H x 7-3/8" D	6 lb.
C35	35W	1	70 Hz to 16 kHz - Transformer; 20 Hz to 20 kHz - Direct	1% Max	70V, 25V, 16-ohm, 4-ohm direct	85W	14-1/2" W x 3-3/4" H x 11" D	15 lb.
C60	60W	1	70 Hz to 16 kHz - Transformer; 20 Hz to 20 kHz - Direct	1% Max	8-ohm on C35 and C60	148W	14-1/2" W x 3-3/4" H x 11" D	17 lb.
C100	100W	1	200 Hz to 15 kHz	2% Max	8- & 600-ohm	220W	5-1/2" W x 4-1/8" H x 2-1/4" D	19 lb.
GA2	1.5W	1	30 Hz to 12 kHz	2% Max	70V, 25V, 8-ohm	4W	8-1/2" W x 2-3/4" H x 6" D	2 lb.
GA6A	6W	1	30 Hz to 12 kHz	2% Max	70V, 25V, 8-ohm	16W	8-1/2" W x 2-3/4" H x 6" D	5 lb.
GS35	35W	1	65 Hz to 20 kHz - Transformer; 20 Hz to 20 kHz - Direct	0.5% Max	70V, 25V, 25VCT, 8-ohm, 4-ohm direct	0.9A	16-1/2" W x 3-1/2" H x 13-1/2" D	17 lb.
GS60	60W	1	65 Hz to 20 kHz - Transformer; 20 Hz to 20 kHz - Direct	0.5% Max	70V, 25V, 25VCT, 8-ohm, 4-ohm direct	1.3A	16-1/2" W x 3-1/2" H x 13-1/2" D	20 lb.
GS100	100W	1	65 Hz to 20 kHz - Transformer; 20 Hz to 20 kHz - Direct	0.5% Max	70V, 25V, 25VCT, 8-ohm, 4-ohm direct	2.2A	16-1/2" W x 3-1/2" H x 13-1/2" D	23 lb.
GS150	150W	1	65 Hz to 20 kHz - Transformer; 20 Hz to 20 kHz - Direct	0.5% Max	70V, 25V, 25VCT, 8-ohm, 4-ohm direct	3.0A	16-1/2" W x 3-1/2" H x 13-1/2" D	29 lb.
GS250	250W	1	65 Hz to 20 kHz - Transformer; 20 Hz to 20 kHz - Direct	0.5% Max	70V, 25V, 25VCT, 8-ohm, 4-ohm direct	5.0A	16-1/2" W x 3-1/2" H x 13-1/2" D	30 lb.
HTA125A	125W	1	20 Hz to 20 kHz	0.5% Max	70V, 25VCT, 25V, 8-ohm, 4-ohm	260W	19" W x 5-1/4" H x 11" D	36 lb.
HTA250A	250W	1	20 Hz to 20 kHz	0.5% Max	70V, 25VCT, 25V, 8-ohm, 4-ohm	520W	19" W x 5-1/4" H x 11" D	50 lb.
M300	300/600W	2 or 1	20 Hz to 20 kHz	0.5% Max	4- to 8-ohm (2 channel mode); 70V (1 channel mode)	12A	17" W x 3-1/2" H x 18-1/2" D (not including brackets)	41 lb.
M450	450/900W	2 or 1	20 Hz to 20 kHz	0.5% Max	4- to 8-ohm (2 channel mode); 70V (1 channel mode)	15A	17" W x 3-1/2" H x 18-1/2" D (not including brackets)	44 lb.
M600	600/1200W	2 or 1	20 Hz to 20 kHz	0.5% Max	4- to 8-ohm (2 channel mode); 70V (1 channel mode)	20A	17" W x 3-1/2" H x 18-1/2" D (not including brackets)	46 lb.
PMS180	100W 60W 20W	3	70 Hz to 20 kHz - Trans (Amp 1 & 2); 70 Hz to 15 kHz - Trans (Amp 3); 20 Hz to 20 kHz - Direct (Amp 1 & 2); 20 Hz to 15 kHz - Direct (Amp 3)	0.5% - Amp 1 & 2; 1% - Amp 3 (Max)	70V, 25V, 8-ohm, 4-ohm direct	430W	17" W x 5-1/2" H x 12-1/2" D	38 lb.
TPU15A	15W	1	70 Hz to 12 kHz	2% Max	70V, 25V, 8-ohm	0.5A	11" W x 2-3/4" H x 2-3/8" D	4 lb.
TPU35B	35W	1	70 Hz to 12 kHz	2% Max	70V, 25V, 8-ohm	0.75A	11" W x 2-3/4" H x 2-3/8" D	12 lb.
TPU60B	60W	1	70 Hz to 15 kHz	1% Max	70V, 25V, 25VCT, 16-ohm	1.5A	14-1/4" W x 8-3/8" H x 3-5/8" D	15 lb.
TPU100B	100W	1	70 Hz to 15 kHz	1% Max	70V, 25V, 25VCT, 16-ohm	2A	14-1/4" W x 8-3/8" H x 3-5/8" D	18 lb.
TPU250	250W	1	70 Hz to 15 kHz	1% Max	70V, 25V	5A	19" W x 10-1/2" H x 3-7/8" D	28 lb.
V35	35W	1	45 Hz to 20 kHz - Transformer; 20 Hz to 20 kHz - Direct	0.5% - Transformer; 0.1% - Direct (Max)	70V, 25V, 8-ohm, 4-ohm direct	0.6A	17" W x 3-1/2" H x 14-3/4" D	22 lb.
V60	60W	1	45 Hz to 20 kHz - Transformer; 20 Hz to 20 kHz - Direct	0.5% - Transformer; 0.1% - Direct (Max)	70V, 25V, 8-ohm, 4-ohm direct	1.3A	17" W x 3-1/2" H x 14-3/4" D	26 lb.
V100	100W	1	45 Hz to 20 kHz - Transformer; 20 Hz to 20 kHz - Direct	0.5% - Transformer; 0.1% - Direct (Max)	70V, 25V, 8-ohm, 4-ohm direct	2.0A	17" W x 3-1/2" H x 14-3/4" D	28 lb.
V150	150W	1	45 Hz to 20 kHz - Transformer; 20 Hz to 20 kHz - Direct	0.5% - Transformer; 0.1% - Direct (Max)	70V, 25V, 8-ohm, 4-ohm direct	3.5A	17" W x 3-1/2" H x 14-3/4" D	31 lb.
V250	250W	1	45 Hz to 20 kHz - Transformer; 20 Hz to 20 kHz - Direct	0.5% - Transformer; 0.1% - Direct (Max)	70V, 25V, 8-ohm, 4-ohm direct	5.5A	17" W x 3-1/2" H x 14-3/4" D	32 lb.
WV100	100W	1	20 Hz to 20 kHz	0.5% Max	70V direct	2.0A	14-1/8" W x 21" H	27 lb.
WV150	150W	1	20 Hz to 20 kHz	0.5% Max	70V direct	3.5A	14-1/8" W x 21" H	29 lb.
WV250	250W	1	20 Hz to 20 kHz	0.5% Max	70V direct	5.5A	14-1/8" W x 21" H	28 lb.
X300	300W	2	20 Hz to 20 kHz	0.5% Max	70V direct	12A	17" W x 3-1/2" H x 18-1/4" D (not including brackets)	41 lb.
X450	450W	2	20 Hz to 20 kHz	0.5% Max	70V direct	15A	17" W x 3-1/2" H x 18-1/4" D (not including brackets)	44 lb.
X600	600W	2	20 Hz to 20 kHz	0.5% Max	70V direct	20A	17" W x 3-1/2" H x 18-1/4" D (not including brackets)	46 lb.

* @ -240 FRP Transformer output;
@ FRP for Direct outputs

** Bandwidth limited to frequency response

*** FRP @ 120V AC line voltage

Specifications subject to change without notice.