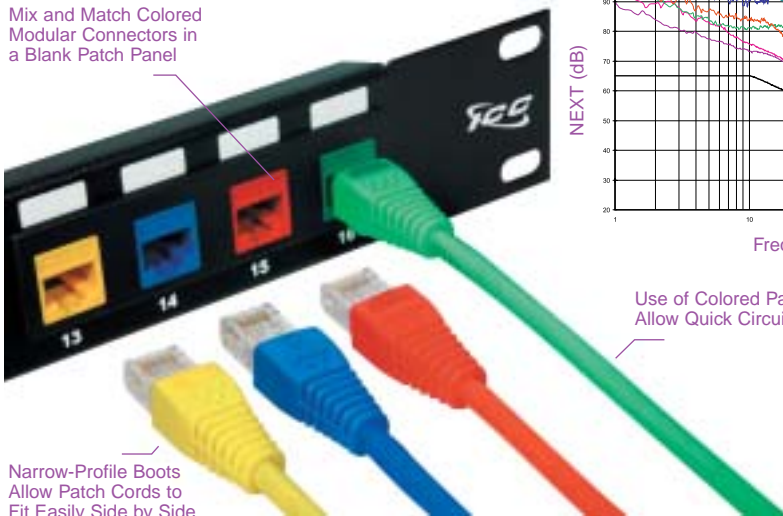




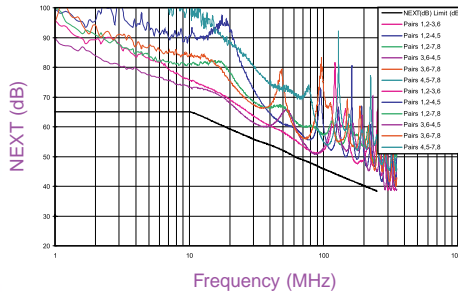
# Category 6 Patch Cords

Mix and Match Colored Modular Connectors in a Blank Patch Panel



Narrow-Profile Boots Allow Patch Cords to Fit Easily Side by Side

COMPONENT LEVEL NEXT



Use of Colored Patch Cords Allow Quick Circuit Identification

## Installation Benefits

- Superior Balance to Reject Noise and Emissions
- Minimal Attenuation to Ensure Stronger Signal Transmission
- Low Return Loss to Reduce Signal Reflections
- Patch Cords Are Available in 7 Different Colors



ICPCS603WH



ICPCS603GY



ICPCS603BK



ICPCS603BL



ICPCS603GN



ICPCS603RD



ICPCS603YL

## Category 6 Patch Cord

Using testing procedures released under TIA/EIA-568-B.2-1, ICC's Category 6 patch cords surpassed current Category 6 channel performance requirements when used in a CAT 6 channel and combined with ICC's Category 6 patch panels and modular connectors. Available in standard blue as well as white, gray, red, yellow, black, and green, adds value to the installation by allowing you to easily identify the patch cord usage. The patch cord boot has a narrow-profile to allow patch cords to fit adjacent to each other in high-density applications.

PART NUMBER DESCRIPTION

ICPCS603xx*	3 ft., 4 UTP, 24 AWG Stranded <b>NEW</b>
ICPCS605xx*	5 ft., 4 UTP, 24 AWG Stranded <b>NEW</b>
ICPCS607xx*	7 ft., 4 UTP, 24 AWG Stranded <b>NEW</b>
ICPCS610xx*	10 ft., 4 UTP, 24 AWG Stranded <b>NEW</b>
ICPCS614xx*	14 ft., 4 UTP, 24 AWG Stranded <b>NEW</b>
ICPCS620BL	20 ft., 4 UTP, 24 AWG Stranded
ICPCS625BL	25 ft., 4 UTP, 24 AWG Stranded

\*xx = WH, GY, BK, BL, GN, RD, YL



ICPCSICDxx\*

## Snap-in Icon

The snap-in icon is designed to apply to Category 6 and Category 5e patch cord boots. This allows for easy color-coded system administration and are available in text versions for station identification. There are 24 reversible icons per tree.

PART NUMBER DESCRIPTION

ICPCSICDxx*	Top: Data (24 ea.), Bottom:  (24 ea.)
ICPCSICVxx*	Top: Voice (24 ea.), Bottom:  (24 ea.)

\*xx = IV, WH, GY, BK, BL, GN, OR, PR, RD, YL

