

Surface Mount Housings

SpeedStar surface mount jack housings are available in several configurations for use with Suttle's multimedia modules. Each housing provides simple snap-in installation of modules with the use of versatile insert plates. Housings can be screw mounted or mounted with the double-sided adhesive pad.

Features and Benefits

- Supports Voice, Data, Fiber, Video, and Audio Modules
- Screw or adhesive pad mounting options



STARMMB-52

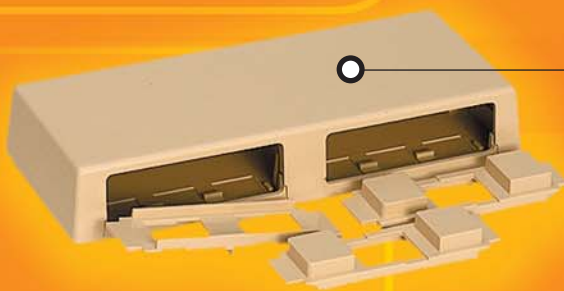
Easy to read designations for quick identification

Snap-in wiring spools provide cable management and recommended strain relief

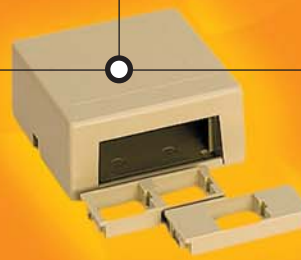
Fits single, double and European style electrical boxes

Easily removed tear outs provide side cable and raceway entry

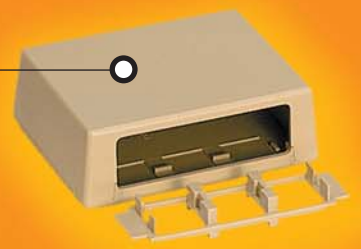
Snap-on cover reduces installation time



STAR108SM-52



STAR558-52



STAR107SM-52-52

SpeedStar®

Surface Mount Housings

Surface Mount Housing Specifications

| | | |
|------------------|---|-------------------------------|
| Housing: | High impact, UL 94V-0 rated thermoplastic | |
| Listings: | cULus | STARMMB |
| | UL | STAR558, STAR107SM, STAR108SM |
| | CSA | STAR558 |

Ordering Information

| Part Number | Description | Dimensions |
|--------------|----------------|---------------------------|
| STAR558-XX | 1 or 2 Ports | 2.7"L x 2.5"W x 1.17"H |
| STAR107SM-XX | 3 Port | 3.25"L x 2.625"W x 1.03"H |
| STAR108SM-XX | 6 Port | 6.17"L x 2.625"W x 1.03"H |
| STARMMB-XX | Up to 12 Ports | 5.6"L x 6.75"W x 1.2"H |

Colors:

| | |
|------|------------------|
| (03) | Black |
| (48) | Gray |
| (52) | Electrical Ivory |
| (85) | White |

Standard packaging includes contents as shown, as well as mounting screws, adhesive pad (2x for STARMMB), and 2 tie wraps (STARMMB only)

CONTACT US
223 Main St. South • Hector, MN 55342
Ph: 320-848-6711 or 800-852-8662
www.suttleonline.com

© 2003 Suttle, a subsidiary of Communications Systems, Inc.
SpeedStar, Suttle, and the Suttle Logo are registered trademarks
of Suttle, a subsidiary of Communications Systems, Inc.

Sold by:



SUTTLE