

# S110® MODULAR JACK BLOCKS

Sold by:



The Siemon modular jack block provides a pre-wired distribution solution for network applications. The modular jack block can be wall mounted and is typically used to connect horizontal cabling to network equipment. connections are made by terminating 4-pair horizontal cables to S110D connecting blocks and by patching to active equipment.

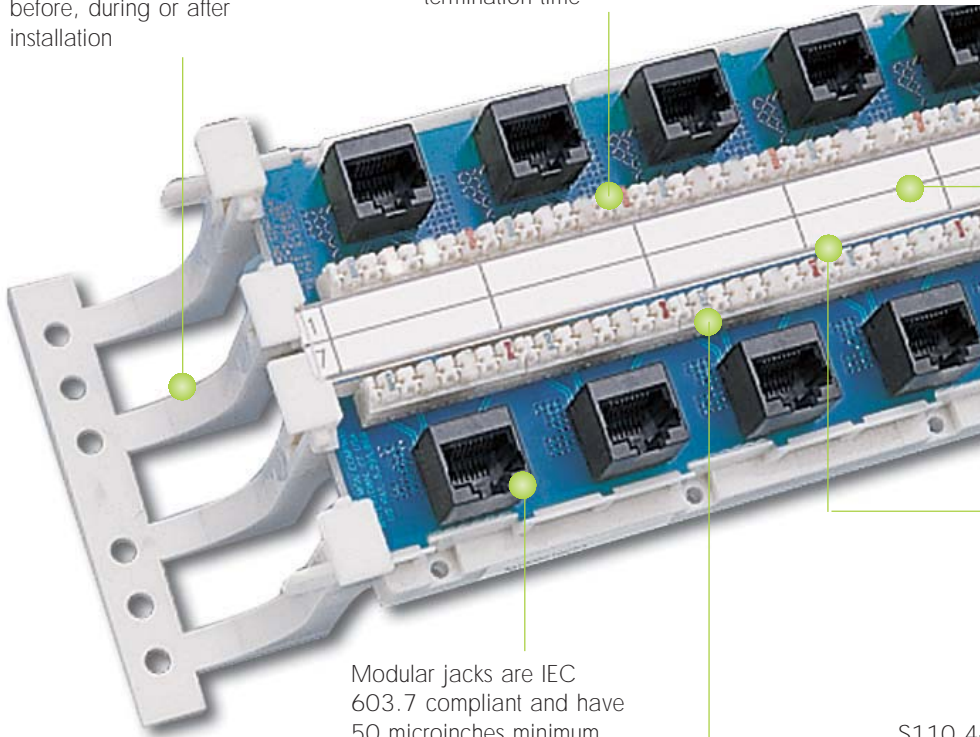


**PATENTED**

110 PRODUCTS

6- and 12-port panels may be detached from stand-off legs before, during or after installation

Multi-pair punch-down tool can be used to reduce termination time

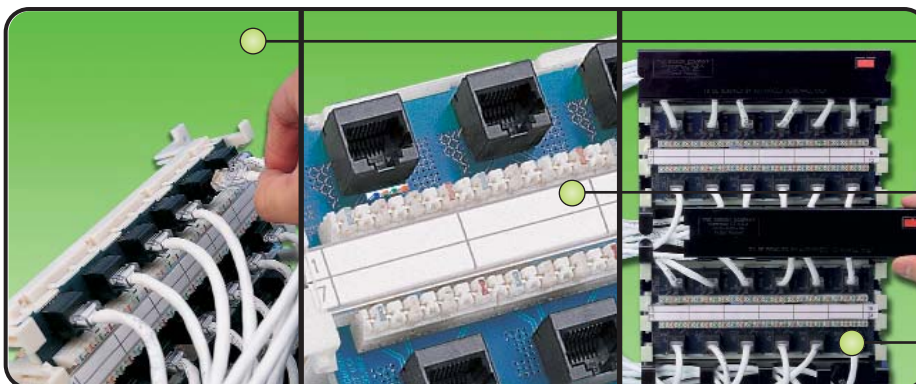


Cable entering through access openings in bases are hidden by designation labels to provide a clean appearance

Horizontal cabling is routed to S110 termination in the channel between rows of outlets

Modular jacks are IEC 603.7 compliant and have 50 microinches minimum hard gold plating over nickel

S110 4-pair connecting blocks feature a "universal" wiring for compatibility with both T568A and T568B wiring configurations



Cost effective modular patching solution for small to medium size LANs

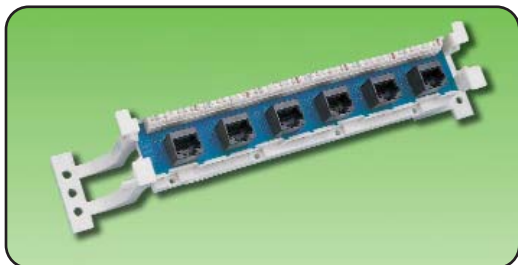
Modular outlets and S110 terminations are located on front of panels for easy access

Also available mounted to S110 Tower which includes cable managers and covers to route and protect horizontal cables for a clean appearance

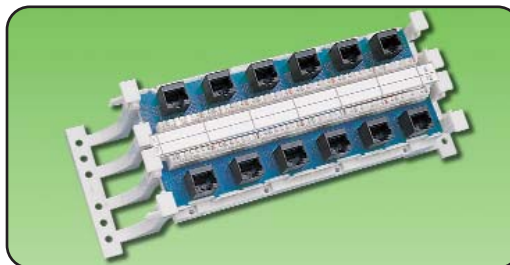
# ORDERING INFORMATION

## 110 PRODUCTS

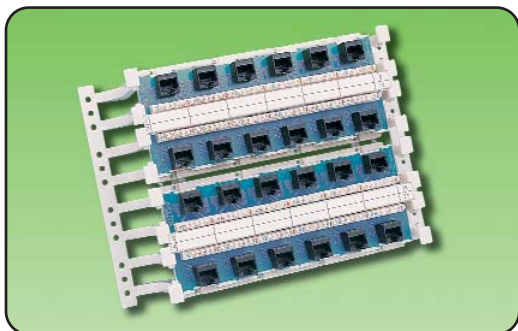
### S110® Modular Jack Wall Mount Blocks:



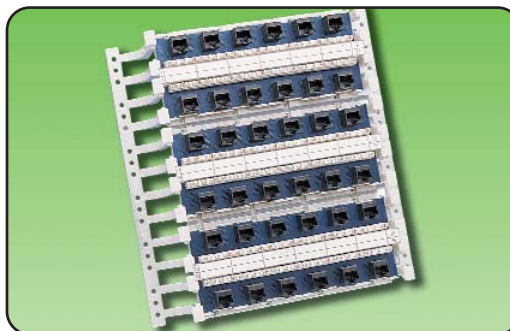
S110AB5-50JP .....6-port, T568A/B wiring, with detachable legs  
height: 45.7mm (1.80 in.), width: 272mm (10.7 in.), depth: 82.8mm (3.26 in.)



S110AB5-100JP .....12-port, T568A/B wiring, with detachable legs  
height: 91.4mm (3.60 in.), width: 272mm (10.7 in.), depth: 82.8mm (3.26 in.)

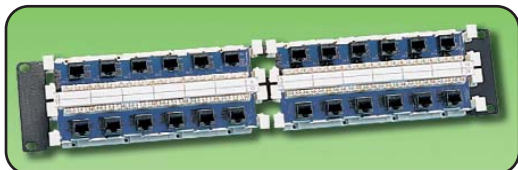


S110AB5-200JP .....24-port, T568A/B wiring, with permanent legs  
height: 183mm (7.20 in.), width: 272mm (10.7 in.), depth: 82.8mm (3.26 in.)



S110AB5-300JP .....36-port, T568A/B wiring, with permanent legs  
height: 274.3mm (10.8 in.), width: 272mm (10.7 in.), depth: 82.8mm (3.26 in.)

### Rack Mount Panels:



S110DB5-24RJP .....24-port jack panel, on a 19 inch panel, T568A/B wiring, 2 RMS  
Note: 1 RMS = 44.5mm (1.75 in.)

### Vertical Mount Panels:



S110AB5-50JP .....6-port, T568A/B wiring, for mounting on S89 bracket (not included)

height: 254.0mm (10.0 in.),  
width: 85.9mm (3.38 in.),  
depth: 86.6mm (3.41 in.)  
(dimensions include S89 bracket)

S89B .....89B mounting bracket  
S89D .....89D mounting bracket

Because we are continuously improving our products, The Siemon Company reserves the right to change specifications and availability without prior notice.  
S110® and MC® are trademarks of The Siemon Company

For related product information request Spec Sheet(s):  
MC® 5 Modular Cords (PROD-SS-MOD)  
Termination Tools (PROD-SS-S78)

**The Americas**  
Watertown, CT USA  
Phone (1) 860 945 4200

**Europe/Middle East/Africa**  
Surrey, England  
Phone (44) 0 1483 480040

**Asia/Pacific**  
Shanghai, P.R. China  
Phone (86) 21 6390 6778

WWW.SIEMON.COM

**ISO 9001**  
CERTIFIED

**ISO 14001**  
CERTIFIED

Sold by:



**SIEMON™**