

RF Notch Filter

APPLICATION

The RF Notch Filter blocks incoming cable TV channels 75-80, allowing home security or entertainment components to broadcast on a dedicated channel. Simply couple to the coaxial cable TV input on either a splitter or an active video distribution device such as the Leviton 3x8 Bi-Directional Video Module (PN# 47690-38B). The Notch Filter also blocks outgoing signals, such as cameras, from being broadcast outside the home.

STANDARDS COMPLIANCE

Meets or exceeds all applicable standards: cULus listed.

PHYSICAL SPECIFICATIONS

Dimensions/Weight:	3"l x .9"w/.2 lbs
Type:	Passive RF filter
Bandwidth:	CATV channels 75-80
Input:	F-Connector (female)
Output:	F-Connector (male)

DESIGN CONSIDERATIONS

- Allocates channels 75-80 for home security or entertainment video application.
- Blocks outgoing signals, such as security camera signals.
- Utilizes coaxial cable system without interference.

WARRANTY INFORMATION

- Two-year limited product warranty.

See ELECTRONIC FILES for CAD files (.DXF, .DWG, MS-DOS.EPS) on disk



RF Notch Filter

For ELECTRONIC Typical Specs see (.TXT) file on disk.

TYPICAL SPECIFICATIONS

The RF Filter shall be cULus listed. It shall block CATV channels 75-80 and block outgoing signals. The Filter shall operate on coaxial cable system without interference, using a female F-Connector for input and a male F-Connector for output. The manufacturer shall provide a two-year limited product warranty.



For Applications Engineering Support – Call 1-425-485-4288; in USA call 1-800-722-2082
Spec sheets and updates are also available at www.levitonvoicedata.com.



RF Notch Filter

Part Numbers
47690-NFA

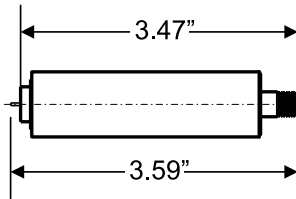
.....

DIMENSIONAL LINE ART

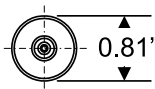
See ELECTRONIC FILES for CAD images
(.DXF, .DWG, MS-DOS.EPS)

47690-NFA
RF Notch Filter

Front View



Side View



PART NUMBER

<i>RF Notch Filter</i>	<i>Part Number</i>
RF Notch Filter	47690-NFA



For Applications Engineering Support – Call 1-425-485-4288; in USA call 1-800-722-2082.
Spec sheets and updates are also available at www.levitonvoicedata.com.



2222 – 222nd St. SE • Bothell, WA 98021 USA • Tel: 1-800-722-2082 / 1-425-485-4288 • Fax: 1-425-483-5270 • Int'l Fax: 1-425-485-9170 • GSA# GS-35F-4785G

