

MEDICAL TRANSPORT TOTES (MTT)

suitable for refrigerated transport of vaccines

B&W International GmbH from Ibbenbüren is a manufacturer of special cases and bags developed in Germany with high demands on functionality and design.

In cooperation with our American partner company, which has a long-standing reputation in the use of temperature-sensitive, medical-pharmaceutical transports, an integrated solution for the distribution of COVID-19 vaccines was realized.

- Coordinated combination of insulated transport totes and high-performance PCM (phase change material) cold packs as transport solution
- Permanently stable cold chain: from the laboratory to the point of use, e.g. via mobile vaccination teams
- Up to 30 hours independence from electricity / external energy supply due to passive cooling
- Different target temperatures can be permanently guaranteed: 0 degrees, -21 degrees
- Advantages over use of ice, dry ice and gel accumulators, as storable, reusable, non-toxic and CO₂-free
- Successfully used in laboratories, hospitals and diagnostic companies in the USA, e.g. with more than 30,000 Covid tests daily
- Can also be used as a backup solution (temporary storage, lack of space in power-dependent refrigerators, protection against power outages)
- High carrying comfort in mobile use
- Easy handling and disinfection



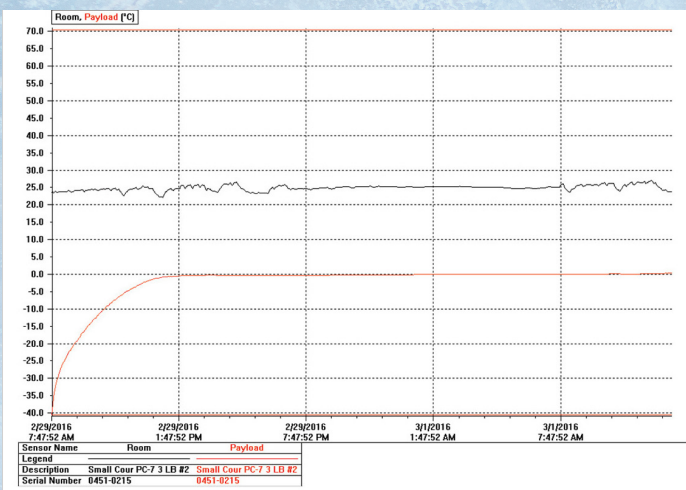
AVAILABLE IN 3 SIZES

(L x W x D, inch)	SMALL	MEDIUM	LARGE
external dimensions	14.4" x 10" x 14"	15.5" x 14.4" x 16.9"	22.6" x 13" x 14"
interior dimensions	10.5" x 6.3" x 10"	10.5" x 9.3" x 12.1"	19.8" x 10.2" x 11.5"
interior dimensions bottom	10.3" x 6.1"	10.4" x 9"	18.4" x 8.8"
weight	4.3 lbs	5.3 lbs	8 lbs
number of vaccine doses	ca. 350 Vaccine doses	ca. 1000 Vaccine doses	ca. 2100 Vaccine doses
cooling possibilities	PC-0 or PC-21	PC-0 or PC-21	PC-0 or PC-21
	<ul style="list-style-type: none"> Document window on front and back ID window on each side Includes shoulder strap 	<ul style="list-style-type: none"> Document window on front and back ID window on each side 	<ul style="list-style-type: none"> Document window on front and back ID window on each side Removable insulated partition allowing for two different temperature zones

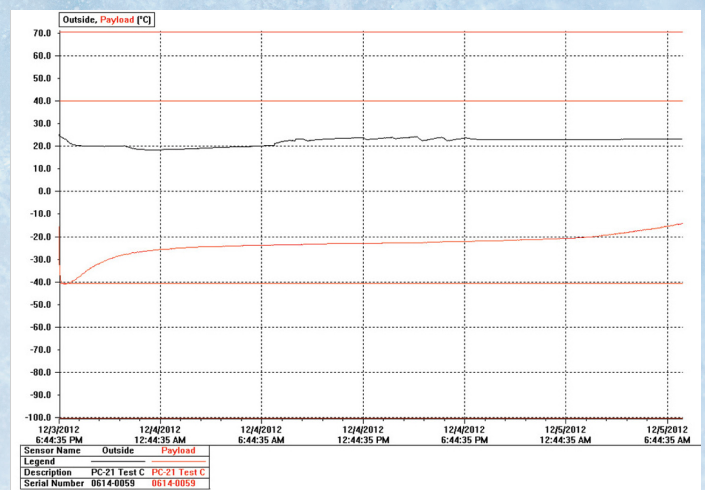
Explanation PCM

The PCMs provides specific temperatures for a variety of applications. The "phase" temperatures are the temperatures at which each product undergoes the phase change, or melting, from solid to liquid. These temperatures are 0°C and -21°C. The latent heat of each product allows all heat absorbed to be used in the melting process, or phase change, without any temperature change, providing a stable passive cooling system.

REFRIGERATED [PC-0]



ULTRA-COLD ALLOGRAFT TOTE [PC-21]



The red line indicates the payload area and the black line represents environmental temperature.

