

## Warranty

If the GVR3550 was purchased from a reseller, please contact the company where the device was purchased for replacement, repair or refund.

If the device was purchased directly from Grandstream, please contact our technical support team for a RMA (Return Materials Authorization) number before the product is returned.

Grandstream reserves the right to remedy warranty policy without prior notification.



### Caution:

Changes or modifications to this product not expressly approved by Grandstream, or operation of this product in any way other than as detailed by this User Manual, could void your manufacturer warranty.



### Warning:

Please do not use a different power adaptor with the GVR3550 as it may cause damage to the products and void the manufacturer warranty.

---

- This document is subject to change without notice. The latest electronic version of this user manual is available for download at:
- [http://www.grandstream.com/products/surveillance/GVR3550/documents/GVR3550\\_UM\\_EN.pdf](http://www.grandstream.com/products/surveillance/GVR3550/documents/GVR3550_UM_EN.pdf)

*Reproduction or transmittal of the entire or any part, in any form or by any means, electronic or print, for any purpose is not permitted without the express written permission of Grandstream Networks, Inc.*

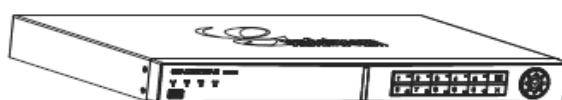
# INSTALL GVR3550

## Equipment Package Contents

The GVR3550 package contains:

**Table-1: GXV3550 Package List:**

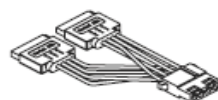
Number	Name	Number
1	Main Case	1
2	12V Power Adapter and Power Cord	1
3	Ethernet Cable	1
4	Remote Control (No Battery)	1
5	SATA HDD Power Cable	2
6	SATA HDD Signal Cable	4
7	Mount Brackets	4
8	HDD Installation Screws	16
9	Quick Installation Guide	1



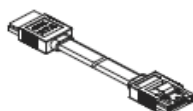
1 x Main Case



1 x Power Adapter



2 x SATA Power Cable



4 x SATA Data Cable



1 x Remote Controller



16 x Screws 4 x Mount Bracket 1 x Ethernet Cable 1 x Quick Installation Guide

To establish a working surveillance system, users have to get following equipment based on own requirement. The following table is for reference only.

**Table-2: GXV3550 Optional Equipment List:**

#	Device Name	Number	Explanation
1	Video Display Device	1	Mornitor, TV (either OK but at least one required)
2	IP Cameras	1 (Minimum)	IP Network Cameras
3	Keyboard	Optional	USB Keyboard
4	Mouse	Optional	USB Mouse
5	Hard Disk Driver	1 (Minimum)	Compatible SATA HDD, Max. capacity 4TB.
6	Audio Device	Optional	Audio In/Out Device: Microphone, Speaker.
7	Alarm Device	Optional	Alarm In/Out Device: Smoke Sensor, IR Sensor, Megnetic Sensor, Siren, etc.

### **Connecting the GVR3550**

To set up a complete set of monitoring system, user needs to provide your own equipment listed below:

- One (1) Display device (could LED monitor or TV)
- At least one (1) Video Acquisition Processing Equipment (e.g.: IP Cameras)
- Optional USB mouse
- Optional USB keyboard
- At least one (1) HDD (Compatible SATA is required. The maximum capacity is no more than 4T.)
- Optional Audio Device (Audio input/output device: stereo, microphone or pickups, etc.)
- Optional Alarm Device (Alarm input/output device: smoke detector, infrared detector, siren, etc.)

The GVR3550 contains no HDD with packaging, users need to check the device and install HDD the first time using it.

### **Installing HDD**

We suggest to use the recommended HDD by Grandstream (7200 RPM HDD and higher), the dedicated PC HDD is not recommended.

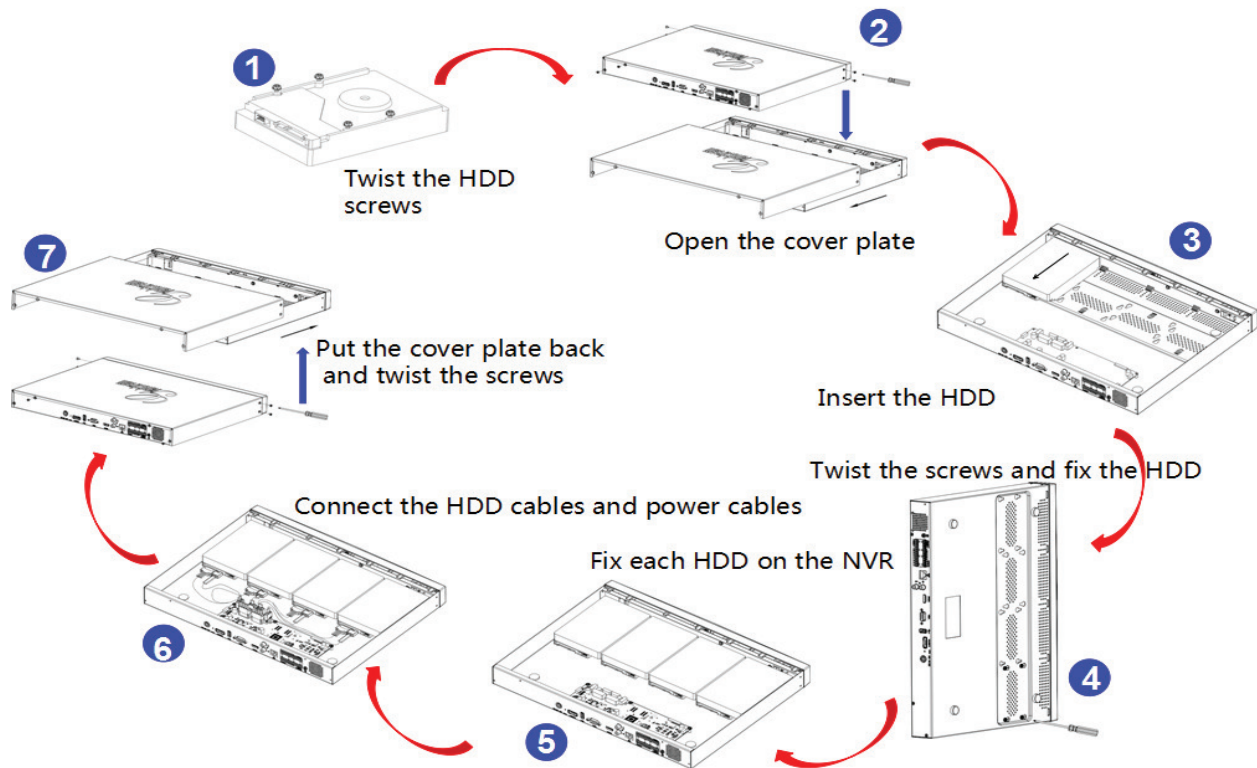
Please install the GVR3550 HDD according to the following procedures:

1. Twist four screws gently on the bottom of HDD, do not twist too tight.
2. Remove the fixed screws on the back and side panel of the main case, open the cover plate to find the HDD installing position.
3. Side put the main case, aims the HDD with four screws at the corresponding round holes on the baseplate, push the screws to the screw holes to stick them.
4. Twist the screws.
5. Repeat the previous steps to install other HDDs.
6. Connect HDD cables and power cables to the interfaces of the mainboard.
7. Put the cover plate back to GVR and twist the screws.



**NOTE:**

- Recommended using at least 7200rpm HDD.
- GVR3550 does NOT support HDD hot swap. When GVR3550 is running, plug the HDD may cause fail to read/write HDD data or unable to identify or access HDD. Grandstream will take no responsibility for the damage caused by wrong operation.



**Figure 1: GVR3550 HDD Installation**

## System Connection

Please connect the GVR3550 according to the following procedures:

1. Install the GVR3550 HDD by following the steps in chapter *Installing HDD*.
2. Plug in the cables and connect it to the display device interface.
3. Connect the mouse, keyboard, alarm input and output devices (optional).
4. Power up those optional devices before connecting power cable and power up the GVR3550.
5. Power up GVR3550, the front panel LEDs will blink and system will boot up and show on display.

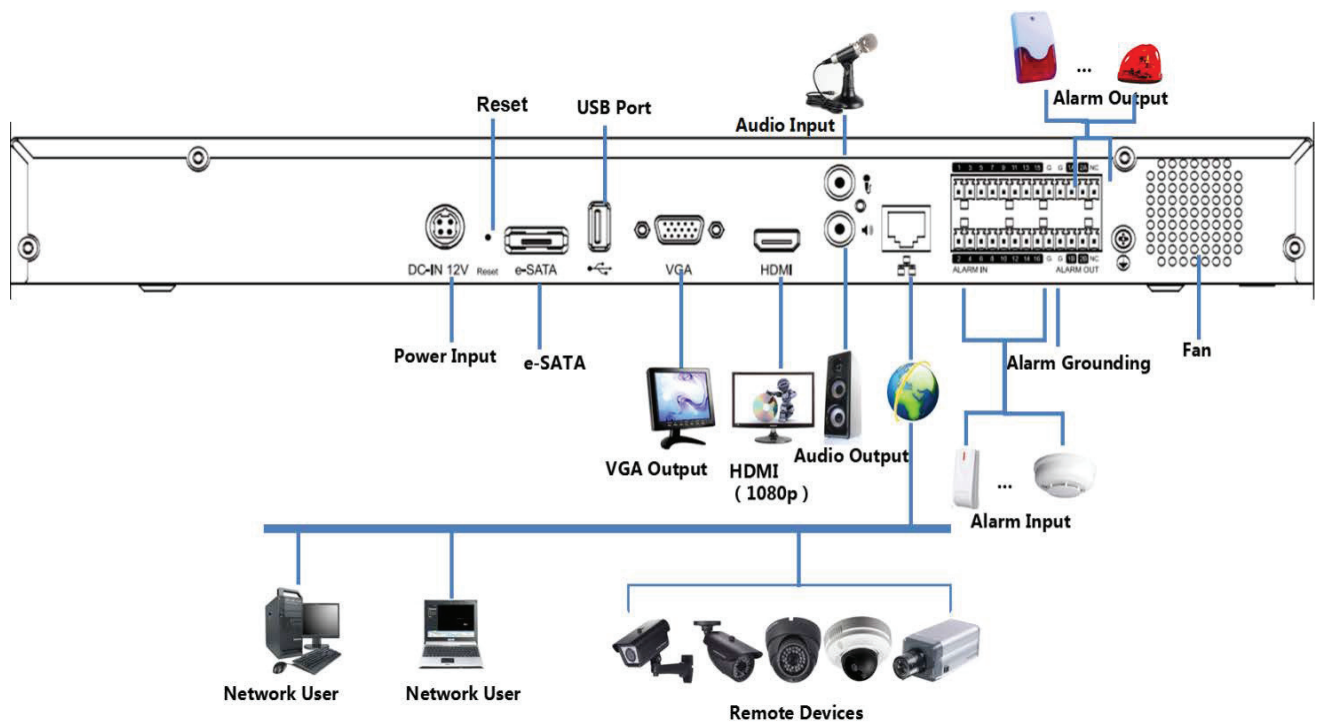


Figure 2: GVR3550 System Connection Diagram

## Network Connection

Users could login the Web page with the administrator account after plugging in the network cable to the GVR3550, go to Main Menu ->Status-> Network Status to check the network status including IP address and network send/receive rate as shown in figure 5. For details, please refer to the chapter *Network Info*.

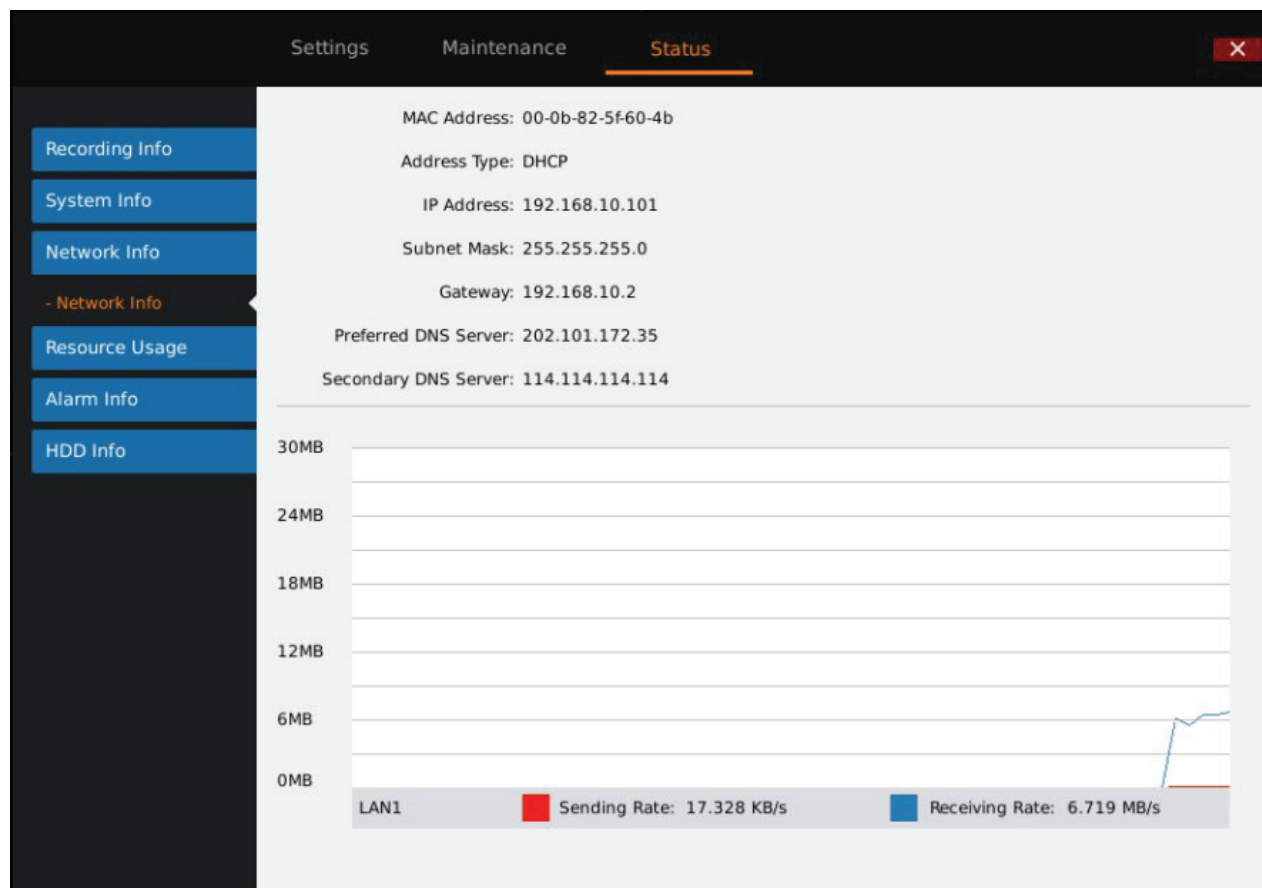


Figure 3: GVR3550 “Status” → “Network Info” Page

## External USB Device

GVR3550 USB interface could be connected to mouse and keyboard, or a USB storage device.



**NOTE:**

*The USB interface voltage on the front panel of the GVR3550 is a little higher than the one on the rear panel, it is suggested that the USB interface on the rear panel connect to mouse and keyboard while the one on the front panel connect to USB storage devices.*