

5-Port and 8-Port Gigabit Switch

APPLICATION

Professional-grade Gigabit Switches connect computers and peripheral devices in remote locations throughout the home or small office. The switches offer plug-and-play installation and a user-friendly design, featuring LEDs to indicate Power, Link/Activity, and 1000 Mbps. Additionally, each switch includes an auto-detect uplink to easily cascade additional hubs, switches, and routers from any port.



5-port Gigabit Switch



8-port Gigabit Switch

SPECIFICATION

The 5-port and 8-port Gigabit Switch shall comply with IEEE 802.3 and 802.3u, 802.3ab, 802.3x, 802.3az, and meet FCC Part 15 Class B requirements. They shall feature one AC power adapter jack and a 12 VDC, 1000mA power supply. They shall include LEDs to indicate Power, Link/Activity, and 1000 Mbps. Gigabit Switches shall be designed for plug-and-play installation with store-and-forward switching architecture. The switches shall also feature an auto-detect uplink to cascade additional switches, hubs, and routers.

FEATURES

- Includes mounting brackets for easy installation in a Structured Media® enclosure
- Compact size saves space
- Offers on/off power button for energy savings and quick reset
- Includes LEDs to indicate Power, Link/Activity, and 1000 Mbps
- High-performance store-and-forward switching architecture
- Cascades additional switches, hubs, or routers from any port with auto-detect uplink design

DESIGN CONSIDERATIONS

- Networks devices in remote rooms, such as computers and printers (Network Interface Card required)
- Connects to Category 5e or 6 Voice and Data Module with Category 5e or 6 Patch Cords
- Offers plug-and-play installation
- Leviton recommends use of its Vented Structured Media Door (47605-xxS) for all applications where active gear is mounted in an enclosure

STANDARDS COMPLIANCE

Meets or exceeds all applicable standards:

- IEEE 802.3 and 802.3u (Ethernet and fast Ethernet)
- IEEE 802.3ab (Gigabit Ethernet)
- IEEE 802.3x (full duplex flow control)
- IEEE 802.3az (Energy Efficient Ethernet) (8 port only)
- FCC Part 15 Class A, CE

PHYSICAL SPECIFICATIONS

Dimensions:	See page two
Data Transfer Rate:	10/100/1000 Mbps
Connectors:	5 or 8 ports, one AC power adapter jack
Cabling Requirements:	Standard Category 5e/6 UTP
LED Indicators:	1 Power indicator, Link/Activity, and 1000 Mbps LEDs
Power Supply:	12 VDC @ 1000mA

COUNTRY OF ORIGIN

China

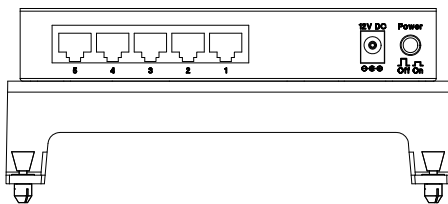
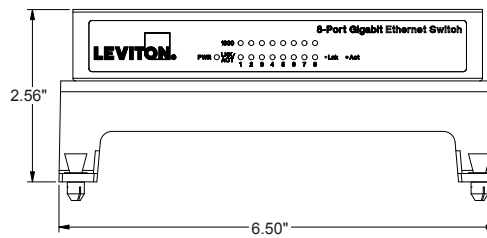
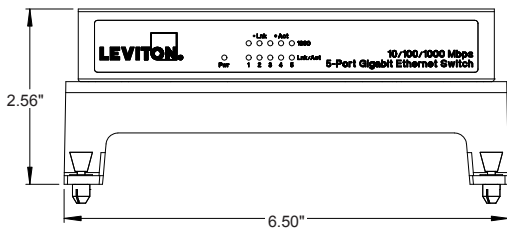
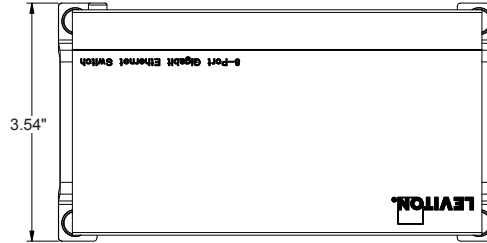
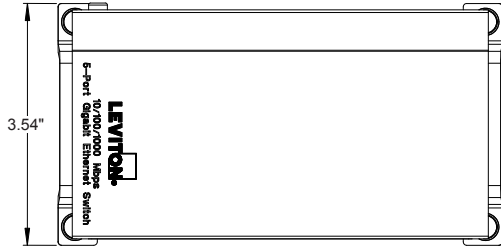
WARRANTY INFORMATION

For a copy of Leviton product warranties, visit www.leviton.com/warranty.

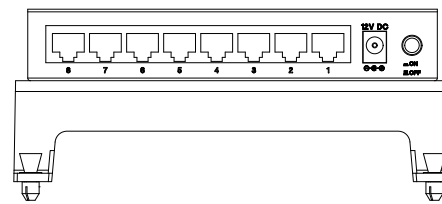
ELECTRONIC FILES

For CAD files, typical specs, or technical drawings (.DXF, .DWG), visit www.leviton.com.

47611-5GB, 47611-8GB



5-port Gigabit Switch



8-port Gigabit Switch

PART NUMBERS

Description	Part No.
5-port Gigabit Ethernet Switch	47611-5GB
8-port Gigabit Ethernet Switch	47611-8GB

