

# Pretium EDGE™ Solutions

A LANscape® Pretium®  
Solutions Product

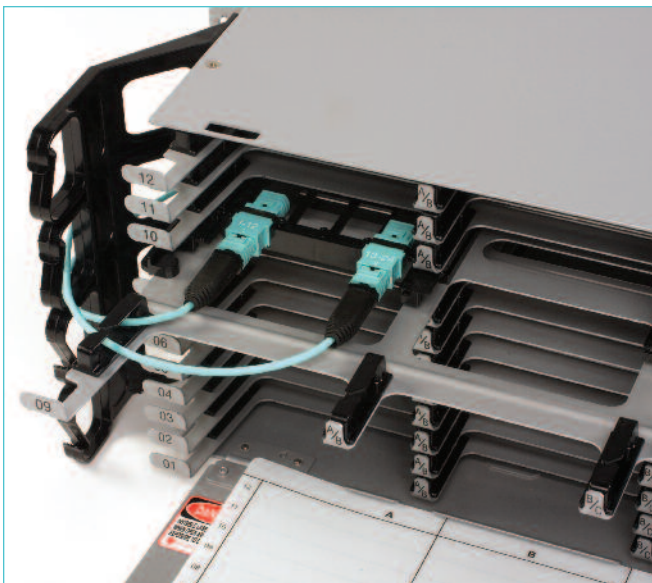
## Pretium EDGE™ Solutions MTP® Connector Panels

Corning Cable Systems Pretium EDGE Solutions MTP Connector panels are used to provide a convenient interconnect point between the trunk cables and harness.

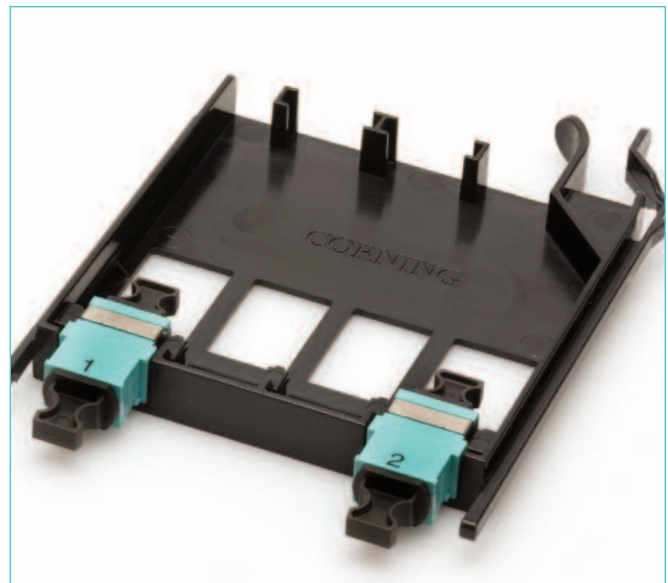
Pretium EDGE Solutions MTP Connector panels are housed within the front of the 1U or 4U housings. The

panels may be installed or removed from either the front or rear direction. The MTP Connector backplane allows for future upgradeability to parallel optics.

Pretium EDGE Solutions MTP Connector panels are packaged in a recyclable, easy-open plastic container to facilitate bulk packaging for reduced waste during data center installation.



Pretium EDGE Solutions MTP Connector Panel  
Installed in Housing | Photo LAN1694



Pretium EDGE Solutions MTP Connector Panel  
| Photo LAN1546

## ordering information |

Part Number	Description
<b>EDGE-CP24-E3</b>	24-fiber MTP Connector Panel, aqua adapter for Pretium 300 or 550 Solutions
<b>EDGE-CP24-90</b>	24-fiber MTP Connector Panel, black adapter for ultra-bendable single-mode solutions
<b>EDGE-CP48-E3</b>	48-fiber MTP Connector Panel, aqua adapter for Pretium 300 or 550 Solutions
<b>EDGE-CP48-90</b>	48-fiber MTP Connector Panel, black adapter for ultra-bendable single-mode solutions