



- Third Party Verified Category 6A Component Exceeding TIA and ISO Limits
- Exclusive 1-Punch Termination Reduces Termination Time by 75%
- Mating Cycles Exceed Industry Standard by 4 Times
- Green Friendly Bulk Packaging Reduces Excess Waste on the Job

FEATURES

- 4.5db min NEXT margin over TIA 568-C.2 component at 500MHz
- 1.5 dB min NEXT margin over ISO 11801 6_A component requirements
- Supports permanent links: 2-100 Meters
- Enhanced common mode design eliminates residual and reflected NEXT and ANEXT
- Designed and tested for 850mA of continuous current per conductor (1.7A per pair)
- Manufacturing: 100% factory tested
- Universal Wiring (T568A or T568B)
- Center port identification allows for greater visibility of labels on a 48-port patch panel

SPECIFICATIONS

- Nose contact material: beryllium copper with precious metal plating with nickel under-plating
- Panel material: 14 ga. steel rolled-edge construction
- 2000+ mating cycles with FCC 8-position plug
- Dimensions and mounting holes per CEA-310-E
- HP6Axx jacks are not compatible with RJ11, RJ14 or RJ25 6-position plugs

STANDARDS

- TIA-568-C.2 Category 6A component
- ISO 11801/60603-7 6_A component
- Third Party tested for TIA 568-C.2 Requirements. Component/Link/Channel
- Category 6A and ISO 11801 Class E_A
- Application: Third-Party qualified for 10 Gigabit Ethernet Transmission IEEE 802.3an
- Current Capacity: Exceeds current levels for PoE and PoE+ IEEE 802.3at
- Mechanical: Verified to TIA-568-C.2
- UL Listed 1863

NextSpeed[®] HUBBELL Ascent Patch Panels Category 6A Component



Performance

Zero-crosstalk contact structure provides the highest electrical performance while maintaining true balance.

Installation Aid

Third hand location pin and hands-free installation.

Extra Wide IDC Spacing

Increased space for lacing and routing cable.

Rigidity

Rolled edge construction eliminates flex during termination.



NEXTSPEED[®] Ascent Category 6A solution is a tuned system of structured cabling components designed and balanced to work together to deliver bandwidth beyond 625MHz.

NEXTSPEED[®] Ascent Category 6A Panel is third party verified exceeding all TIA and ISO component performance requirements. The well balanced design of the HP6A allows the NEXTSPEED Ascent systems to be utilized in links under 10 meters, which is a perfect solution for the datacenter, providing a fully compliant solution from 2-100 Meters.

Ascent 6A series patch panels provide a rugged, feature rich, solution supporting today's high bandwidth mission critical applications.

Don't jeopardize your network, Hubbell's NextSpeed Ascent 6A solution is the product for the digital world, and provides a migration path for tomorrow's emerging network applications.



APPLICATIONS

- Data Center
- 10GBASE-T (10-Gigabit Ethernet)
- Consolidation, Server Clustering & Scalable Virtualization
- Mass Data Storage, Storage Area Networks (SAN)
- Web enablement of applications (WEB 2.0)
- Voice Protocol – VoIP, SIP, SCCP, MGCP
- Video Protocol – IPTV, RTSP, RTP





ORDERING INFORMATION

NEXTSPEED® Ascent Category 6A Patch Panel

Ports	Height	Rack Units	Black Catalog No.	Silver Catalog No.	
24	1.75" (45 mm)	1	HP6A24U	HP6A24US	
48	3.50" (45 mm)	2	HP6A48U	HP6A48US	
96	7.00" (178 mm)	4	HP6A96U	HP6A96US	

RELATED PRODUCT

NEXTSPEED® Ascent Category 6A Angled Patch Panel

Ports	Height	Rack Units	Black Catalog Number	
24	1.75" (45 mm)	1	HP6A24AU	
48	3.50" (45 mm)	2	HP6A48AU	

ACCESSORIES

Rear Cable Management Bars

Description	Catalog Number
Screws to rear flange of 19" rack	CMBR



Angled Blank Panels

Description	Height	Color	Catalog Number
Blank Panel	1U (1.75")	Black	ABP175
	2U (3.50")	Black	ABP350



NEXTSPEED® Ascent C6A Component Jack

1 Jack per package	25 Jacks per package
HJ6AXX	HJ6AXX25



AL =Almond	BK =Black	B =Blue	EI =Electric Ivory	GL =Gold	GY =Gray	GN =Green	LA =Light Almond
OW =Office White	OR =Orange	P =Purple	R =Red	W =White	Y =Yellow	BN =Brown	

NEXTSPEED® Ascent Category 6A Cable

Description	Plenum Spool	Riser Spool
Category 6A UTP Cable	C6ASPXX	C6ASRXX

XX = Cable Color Options

XX = MTO Cable Color Options

B =Blue	GY =Gray	W =White	Y =Yellow	G =Green	OR =Orange
----------------	-----------------	-----------------	------------------	-----------------	-------------------

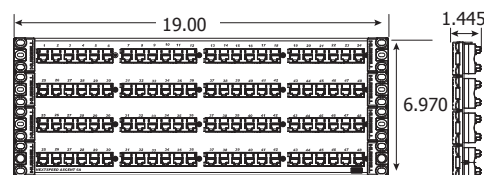
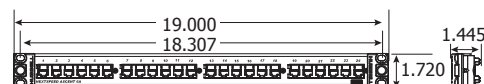


NEXTSPEED® Ascent Category 6A Patch Cords

Color	Catalog Number
Gray	HC6AxxXX

xx Standard Colors - **B**=Blue; **GY**=Gray.XX Standard Lengths - **01**=1'; **03**=3'; **05**=5'; **07**=7'; **10**=10'; **15**=15'; **20**=20'

DIMENSIONS



INTEGRATED SOLUTIONS



Cross-Connect Solutions

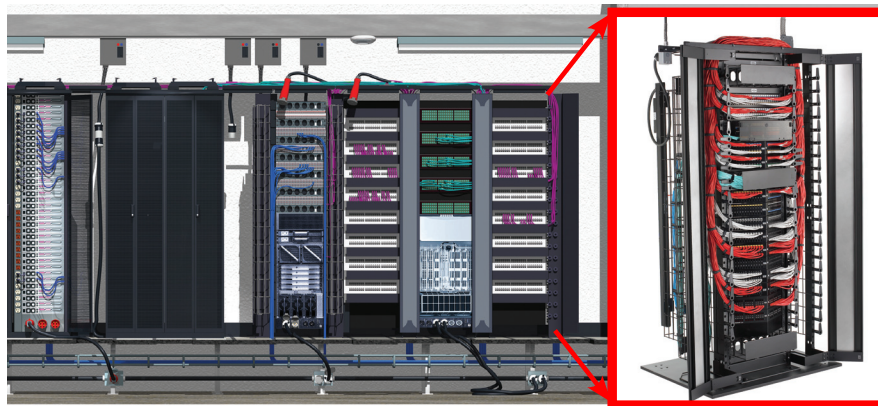
- Data Center Solutions
- XXL Cable Organizers
- NEXTFRAME® Cable Management
- Velcro® Cable Management
- ShieldBond Grounding Systems
- NEXTSPEED Ascent Horizontal Cable
- BIDnet™



TYPICAL APPLICATION

Cat 6A - 10 Gigabit Ethernet has become the standard for connecting active gear in data centers.

BIDnet™ Cat 6A assemblies provide simplicity between switches, servers and patch panels



Cat 6A delivers high performance computing (HPC) to the desktop.

HUBBELL®
Premise Wiring

www.hubbell-premise.com



Hubbell Premise Wiring • Hubbell Incorporated (Delaware) • 23 Clara Drive • Suite 103 • Mystic, CT 06355 • Phone (800) 626-0005 • FAX (860) 535-8328
Printed in U.S.A. Specifications subject to change without notice.

® is a registered trademarks of Hubbell Incorporated.

PLDC001 12/10