



Secure RJ Copper System

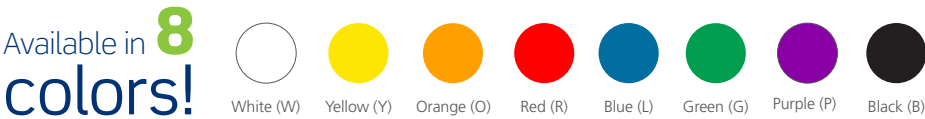
Provide physical security for critical network ports with Leviton’s patent-pending Secure RJ System.

Introducing the ideal category-rated system for sensitive network applications. Locking patch cords and port blockers in your choice of eight colors prevent unauthorized and unintentional port access. Once connected to an industry-standard RJ port, a matching color extraction tool is required for removal. The applications are virtually unlimited. How will you use the Secure RJ System to protect your network?

- Use multiple colors to reserve, identify, and segregate networks in data center, TR/ER, and work area applications
- Prevent accidental or unauthorized moves, adds, or changes in mission critical circuits, including SIPRNET and JWICS government networks, and proprietary and colo data centers
- Ensure continuous connectivity for essential networks, including data center, goverment, educational, retail, financial, and healthcare
- Install patch cords with Secure RJ housing on one end only to prevent theft from hotel rooms, libraries, computer labs, and other publicly used networks
- Help retail establishments prevent unauthorized access to point-of-sale (POS) terminal data ports.

Secure RJ System Components

Available in CAT 6 and 6A, in standard configurations or customized through Leviton's extensive make-to-order (MTO) program.



System Features

- Patent-pending locking mechanism cannot be released without matching color extraction tool
- Port blockers prevent unauthorized network connection via ports not currently in use
- Compatible with industry standard RJ ports in network equipment, devices, patch panels, and work area outlets
- Single system is compatible with all flush and most recessed RJ ports
- Works with high-density network equipment and 1RU 48-port patch panels
- Available in eight color options to reserve, identify, segregate, and secure network ports
- Transparent polymer housing allows color coding without blocking visibility to Link/Status LEDs on electronic equipment
- Made in the United States options available

Note: System does not prevent malicious removal

Leviton Corporate Headquarters | leviton.com

201 N. Service Road, Melville, NY 11747 USA

Customer Service

T 800.323.8920 / +1.631.812.6000

E customerservice@leviton.com

Leviton Network Solutions Division Headquarters | leviton.com/networksolutions

2222-222nd Street S.E., Bothell, WA 98021 USA

Inside Sales

T 800.722.2082

E insidesales@leviton.com

International Inside Sales

T +1.425.486.2222

E intl@leviton.com

Technical Support

T 800.824.3005 / +1.425.486.2222

E appeng@leviton.com

Leviton International Regional Headquarters

Middle East & Africa

T +971.4.886.4722

E lmeinfo@leviton.com

China

T +86.755.3320.0588

E infochina@leviton.com

India / SAARC

T +91.80.4322.5678

E lev_india@leviton.com

Latin America

T +52.55.5082.1040

E lsamarketing@leviton.com

Canada

T +1.514.954.1840

E pcservice@leviton.com

Leviton International Offices

A.S.E.A.N. Countries

T +631.812.6228

E infoasean@leviton.com

Europe

T +33.6.88.69.13.80

E infoeurope@leviton.com

Colombia

T +57.311.820.7055

E lsamarketing@leviton.com

South Korea

T +82.2.3273.9963

E infokorea@leviton.com

Australia & New Zealand

T +64.4.562.8327

E infoausnz@leviton.com

Cable Assembly Operation

- Only extraction tools with the same keyed color as the Secure RJ connectors can remove patch cords
- Extraction tool features easy push-pull motion to remove connectors, even in high-density patch panels

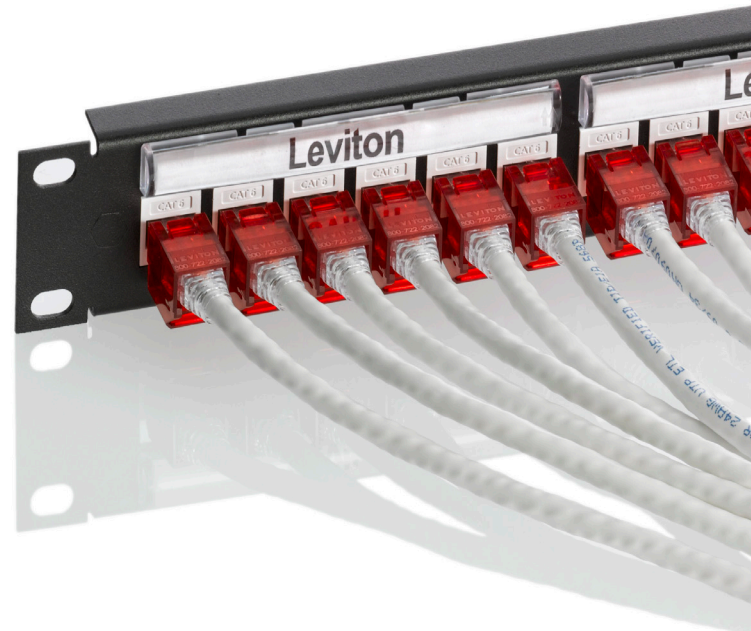
Installed Secure RJ Patch Cord

Uninstalled Secure RJ Patch Cord

Secure RJ Extraction Tool



Rack/Cabinet Mount Application



- Compatible with all industry standard RJ ports
- Works with 110-style and QuickPort® modular panels

Shown above with Leviton QuickPort modular panel

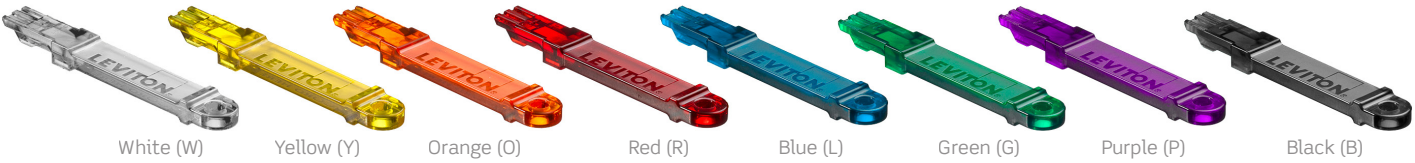
Work Area Application



- Use with QuickPort connectors for work area applications including standard faceplates, surface-mount boxes, and modular furniture faceplates

Patch Cord Housings
Port Blockers
Extraction Tools

Available in **8**
colors!



SECURE RJ COPPER SYSTEM COMPONENTS	
Description	Part No.
CAT 6 SlimLine Patch Cord, with Secure RJ housing on both ends	SRJ6†-xx*
Secure RJ Port Blocker, pack of 12	SRJPB-00†
Secure RJ Extraction Tool, pack of 1	SRJET-00†

Note: Custom patch cords are available through Leviton's make-to-order program.
† = Patch cord housing, port blocker, and extraction tool colors. Choose from the following transparent colors: White (W), Yellow (Y), Orange (O), Red (R), Blue (L), Green (G), Purple (P), Black (B)
xx = Patch cord length. Choose from the following standard lengths: (05), (10), or (20) feet
* = Standard patch cord jacket colors. Choose from the colors below:



Custom Part Number Configurator — Secure RJ Patch Cords



Note: Patch cords with Secure RJ housing on one end only will have Slimline plug on non-secure end

Example 1: **SRJ-U6AMG25FY2U**; Secure RJ Patch Cord, CAT 6 FTP CM, green cable, 25-foot length, transparent yellow on both ends, made in USA.
Example 2: **SRJ-U60MY5ML1N**; Secure RJ Patch Cord, CAT 6 CM, yellow cable, 5-meter length, transparent blue SRJ on one end only, COO N/A.
*CMR and CMP cable rating available in blue cable jacket only.

