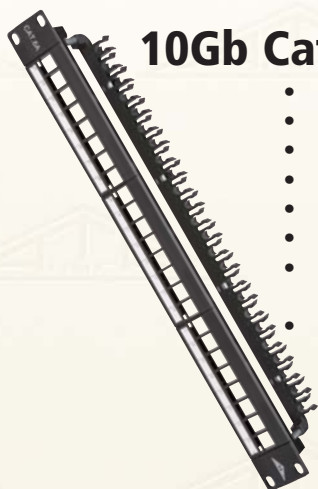
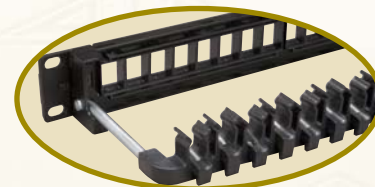


# Telecom Room



## 10Gb Category 6A Patch Panels

- Designed to exceed TIA/EIA-568-B.2-10 Category 6A standard
- Tested and approved for Category 6A channel compliance
- UL Listed and CSA Listed
- 110 termination on loaded patch panels
- 10Gb Cat 6A patch cords on page 43; jacks on page 7
- Loaded patch panels have universal wiring for either 568A or 568B
- Heavy-duty wire management on AT10GPNL-U24 unloaded patch panel swivels up & down for easier cable management. Designed to support heavier Cat 6A cables
- Panels include mounting hardware, cable ties and identification strip



Part Number	Part Description	Std. Pkg. Qty.	Std. Ctn. Qty.
AT10GPNL-U24	24-port unloaded 10Gb Cat 6A multimedia patch panel*	1	1
AT10GPNL-12	12-port loaded 10Gb Cat 6A patch panel	1	1
AT10GPNL-24	24-port loaded 10Gb Cat 6A patch panel	1	1

\* The unloaded patch panel accepts a variety of multimedia Versatap jacks: AT66 (Cat 6) & AT65 (Cat 5e) series, AT31ST (Fiber), AT32F (F-connector), AT31FO (Insert for BNC, RCA & ST connectors), AT32RCA (RCA connectors & couplers), and AT31 (Blank).

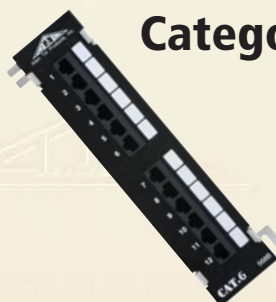


## Category 6 Patch Panels

- Exceeds TIA/EIA Category 6 standards
- ETL tested and approved for Category 6 channel compliance
- Wire management on rear of panel
- Universal wiring for either 568A or 568B
- Includes mounting hardware and cable ties
- UL Listed and CSA Listed
- Identification strips
- 110 termination

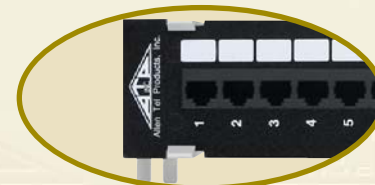


Part Number	Part Description	Std. Pkg. Qty.	Std. Ctn. Qty.
AT66-PNL-12	12 Port Cat 6 Patch Panel, 1.75"H, 1 RU	1	15
AT66-PNL-24	24 Port Cat 6 Patch Panel, 1.75"H, 1 RU	1	15
AT66-PNL-48	48 Port Cat 6 Patch Panel, 3.50"H, 2 RU	1	10
AT66-PNL-96	96 Port Cat 6 Patch Panel, 7.00"H, 4 RU	1	5



## Category 6, 12 Port Patch Panel

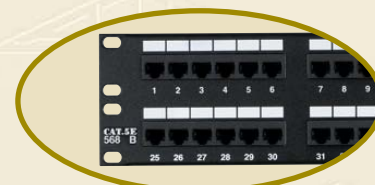
- Designed for small data cross-connect applications
- Equipped with two 6 port Cat6 non-keyed jack modules
- Universal wiring for either 568A or 568B
- Includes GB89D mounting bracket
- UL Listed and CSA Listed
- 110 termination



Part Number	Part Description	Std. Pkg. Qty.	Std. Ctn. Qty.
AT66-12PT	12 Port Cat 6 Patch Panel	1	18

## Category 5e Patch Panels

- Exceeds TIA/EIA Category 5e standard
- ETL tested and approved for Category 5e channel compliance
- Wire management on rear of panel
- Includes AT55CSB cable support bars
- Universal wiring for either 568A or 568B
- UL Listed and CSA Listed
- 110 termination



Part Number	Part Description	Std. Pkg. Qty.	Std. Ctn. Qty.
AT55B-PNL-12	12 Port Cat 5e Patch Panel 1.75"H, 1 RU	1	30
AT55B-PNL-24	24 Port Cat 5e Patch Panel 1.75"H, 1 RU	1	15
AT55B-PNL-32	32 Port Cat 5e Patch Panel 3.50"H, 2 RU	1	10
AT55B-PNL-48	48 Port Cat 5e Patch Panel 3.50"H, 2 RU	1	10
AT55B-PNL-64	64 Port Cat 5e Patch Panel 7.00"H, 4 RU	1	5
AT55B-PNL-96	96 Port Cat 5e Patch Panel 7.00"H, 4 RU	1	5