

For Software Developers

Supporting Application Development

KX-UT670 APIs provide an environment for developing applications that enhance business productivity and service with the Panasonic KX-UT670 Smart Desk Phone. They let you develop applications that meet customer needs, and operate them on the Smart Desk Phone.

Usage Examples

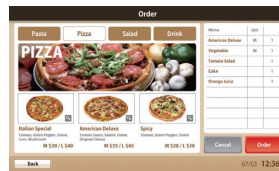
Applications can be developed for use by a variety of businesses.



Hotel Phone

The screen can be used to search for information about the area around the hotel.

Food Delivery Services



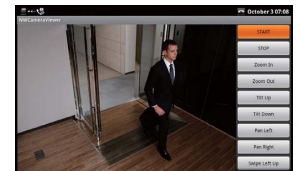
Orders can be placed directly from the on-screen menu.

Office Facility Control



The screen can be used to open or close curtains, and to turn the air conditioner on or off.

Monitoring

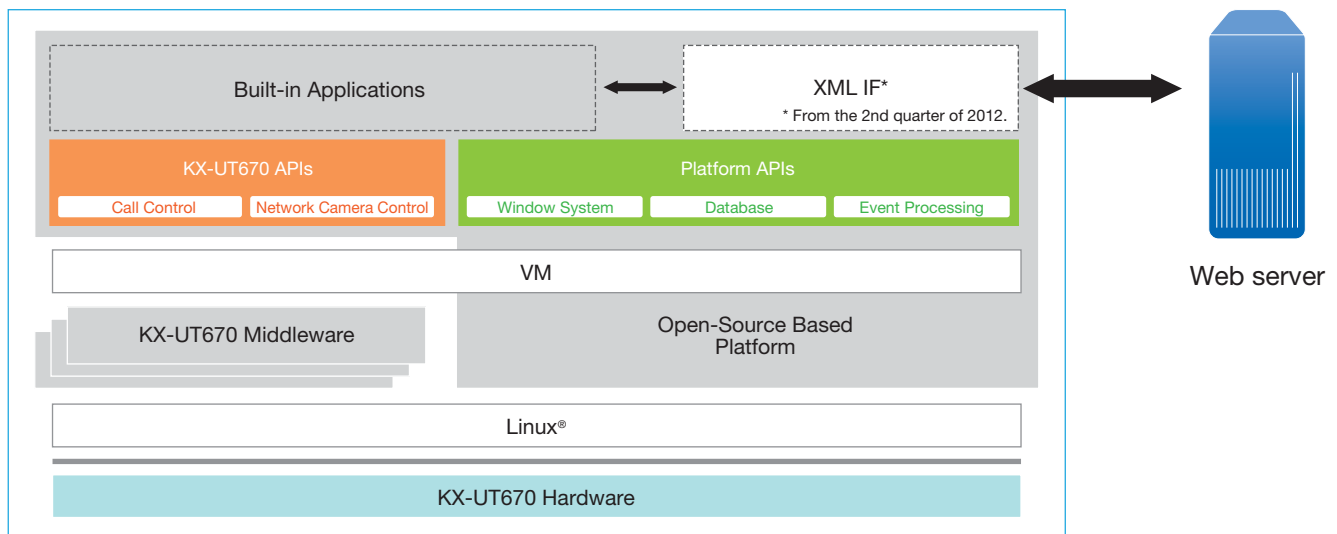


The network camera image can be viewed on-screen, and operating buttons can be changed as necessary.

● The images shown here are simulated application screens.

Software Architecture for the KX-UT670

The KX-UT670 is based on open-source software. KX-UT670 applications are developed in the same manner as those for other devices.

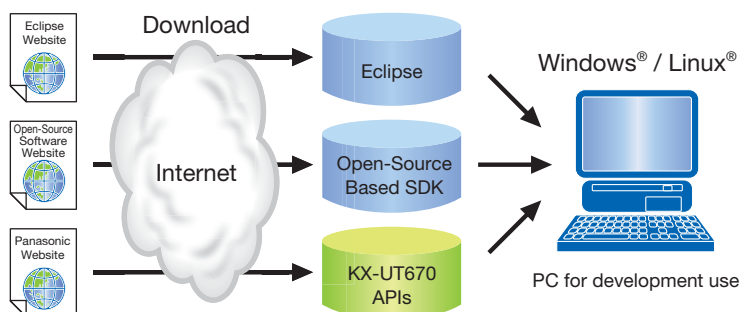


● Applications developed by using these APIs are exclusively for use with the Panasonic KX-UT670 Smart Desk Phone. They will not operate on devices other than the KX-UT670.

1. Development Environment

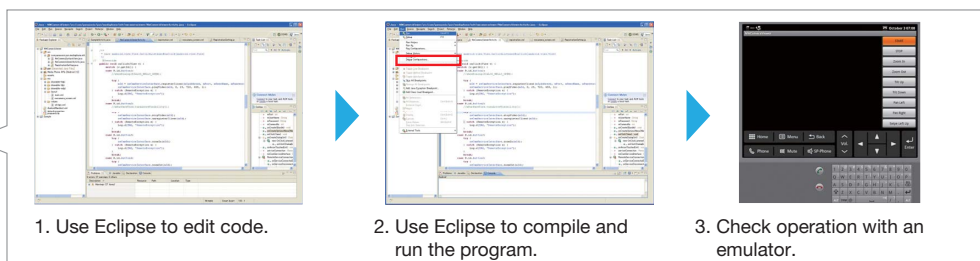
Download Eclipse (an integrated development environment containing an editor, compiler and debugger) to your Windows® or Linux® PC, then download open-source based SDK for Android development use. Next, add-on the KX-UT670 APIs. The Android development environment can be used for developing applications.

● Applications developed by using KX-UT670 APIs are exclusively for use with the KX-UT670. Do not distribute them for use on other devices.



2. Edit Code, Compile, and Confirm Operation

Programs are developed using Java™ programming language. Code editing and compiling are done with Eclipse (other editors and compilers can also be used). After compiling, an emulator can be used to do basic debugging on a PC.



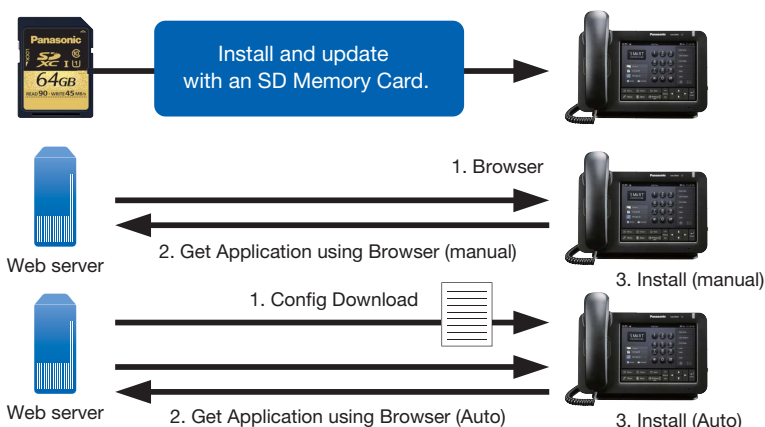
3. Install onto the KX-UT670 and Confirm Operation

Use an SD Memory Card to install the finished application onto the KX-UT670.

Use a web browser to get the application.
• An SD Memory Card must be inserted into the KX-UT670.

Use the config file and access the designated URL to get the application. This enables automatic installation.

• From the 2nd quarter of 2012.
• An SD Memory Card must be inserted into the KX-UT670.



API Information

The following API types are available.

■ Telephone Operation API*

Invokes KX-UT670 telephone functions (call, answer, ring, hold, forward, etc.) from the application.

■ Audio Control API*

Controls the speakerphone, headset, 3-way conversation function, etc., provided in the KX-UT670 Smart Desk Phone.

* Scheduled to be available in February 2012.

■ OAM (Operations, Administration and Management) API

Controls user log deletion, device reset, etc.

■ IP Network Camera Control API

Controls an IP network camera.

*Supports Panasonic network cameras (complying with the PS interface).

■ Device Control API

Controls screen brightness, LED ON/blink, etc.

Trademarks and registered trademarks

- Android is a trademark of Google Inc.
- Oracle and Java are registered trademarks of Oracle and/or its affiliates. Other names may be trademarks of their respective owners.
- Linux is the registered trademark of Linus Torvalds in the U.S. and other countries.
- Microsoft and Windows are either registered trademarks or trademarks of Microsoft Corporation in the United States and/or other countries.

DISTRIBUTED BY :



Panasonic

SIP Phone: <http://panasonic.net/pcc/products/sipphone/index.html>

PSJ-APS001E-LT 1112