

37X/33X/27X Low Light High Resolution PTZ Dome Camera
SPD-3700T/3700/3310/2700

SAMSUNG

WIV

Perfect
Solution

Maximized User-friendliness

37X/33X/27X Zoom Offers a Wide Range of Applications

The SPD-3700T/3700/3310/2700, with its 37X (3.5 ~ 129.5mm) / 33X (3.5 ~ 115.5 mm) / 27X (3.5 ~ 94.5mm) optical zoom capability, can be effortlessly integrated into a wide range of security environments.

SPD-3700T/3700

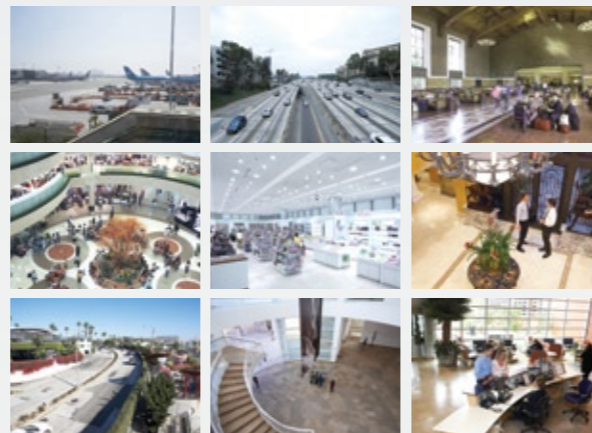
Airports, Roads,
Terminals and Factories

SPD-3310

Department Stores,
Supermarkets and Hotels

SPD-2700

Residential Areas,
Museums and Hospitals



Superb Compatibility with a Wide Range of Protocols

The camera comes with 8 protocols that make integrating into existing security systems easy and trouble-free, making it suitable for a wide range of applications. (Default Protocols : Samsung Techwin, Pelco-D, Pelco-P, Panasonic, Honeywell, AD, Vicon, and Samsung Electronics)

Quick and Easy Connection

The SPD-3700T/3700/3310/2700 features quick-release buttons at each sides of the dome, so it can be connected to the fixture bracket quickly and easily.

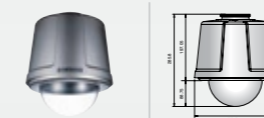


Wide Range of Dedicated Accessories

Dedicated accessories are available for installing the camera in a wide-range of security environments such as ceilings, walls, poles, corners and railings.



STH-380PO



Outdoor Housing

- Dustproof and waterproof, excellent durability : IP67 certified
- Equipped with fan, heater and temperature sensor (STH-370PO/360PO)
- Can be used in very low temperature environments

STH-370PI/PO/360PO



Indoor/Outdoor Housing

- Dustproof and waterproof, excellent durability : IP67 certified
- Equipped with fan, heater and temperature sensor (STH-370PO/360PO)
- Easy installation with rotating housing connection plate
- I P66 (STH-370PO/360PO)

STH-370PE



In-Ceiling Housing

- For flush-mounting a PTZ dome camera to a ceiling
- Quick and easy installation
- Excellent durability

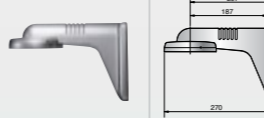
STB-496PPV



Pendant Mount

- For hanging a PTZ dome camera from a ceiling
- Installed combined with STH-380PO/370PI/PO/360PO PTZ dome camera housing

STB-270PWV



Wall Mount

- For installing a PTZ dome camera on a wall
- Quick and easy installation
- Excellent durability

STB-270B



Wall Setup Box

- For installing a PTZ dome camera on a wall
- Installed in combination with STB-270PWV
- Quick and easy installation : Contains adapter storage
- Excellent durability

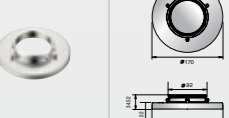
STB-30PF



Ceiling Flange

- For fixing STH-380PO/370PI/PO/360PO PTZ dome camera housing to a pole
- Excellent durability, Quick installation

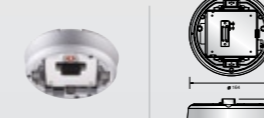
STB-25PF



Flange

- For connecting a PTZ dome camera directly to STB-496PPV bracket
- Quick and easy installation

STB-370PC



Ceiling Mount

- For attaching a PTZ dome camera to a ceilings without a bracket
- Neat design suitable for any interior
- Quick and easy installation

STB-330PPM



Pole Mount

- For fixing a PTZ dome camera to a pole
- Installed in combination with STB-270PWV
- Quick and easy installation
- Excellent durability

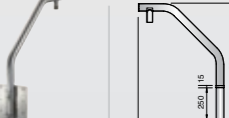
STB-340PCM



Corner Mount

- For installing a PTZ dome camera on a wall corner
- Installed in combination with STB-270PWV
- Quick and easy installation
- Designed to suit any interior

STB-350PPM



Parapet Mount

- For installing a PTZ dome camera in a higher-than-wall location
- Installed in combination with the STB-30PF

Sold by:

 **TWAcomm**
http://www.TWAcomm.com
Toll Free: (877) 389-0000