



Perfect Solution

Maximized User-friendliness



### 37X/33X/27X Zoom Offers a Wide Range of Applications

The SPD-3700T/3700/3310/2700, with its 37X (3.5 ~ 129.5mm) / 33X (3.5 ~ 115.5 mm) / 27X (3.5 ~ 94.5mm) optical zoom capability, can be effortlessly integrated into a wide range of security environments.

#### SPD-3700T/3700

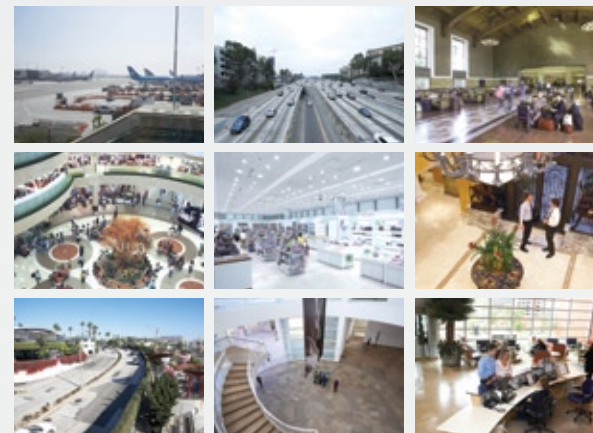
Airports, Roads, Terminals and Factories

#### SPD-3310

Department Stores, Supermarkets and Hotels

#### SPD-2700

Residential Areas, Museums and Hospitals



### Superb Compatibility with a Wide Range of Protocols

The camera comes with 8 protocols that make integrating into existing security systems easy and trouble-free, making it suitable for a wide range of applications. (Default Protocols : Samsung Techwin, Pelco-D, Pelco-P, Panasonic, Honeywell, AD, Vicon, and Samsung Electronics)

### Quick and Easy Connection

The SPD-3700T/3700/3310/2700 features quick-release buttons at each sides of the dome, so it can be connected to the fixture bracket quickly and easily.



### Wide Range of Dedicated Accessories

Dedicated accessories are available for installing the camera in a wide-range of security environments such as ceilings, walls, poles, corners and railings.



<p><b>STH-380PO</b></p> <p><b>Outdoor Housing</b></p> <ul style="list-style-type: none"> <li>Dustproof and waterproof, excellent durability : IP67 certified</li> <li>Equipped with fan, heater and temperature sensor (STH-370PO/360PO)</li> <li>Can be used in very low temperature environments</li> </ul>	<p><b>STH-370PI/PO/360PO</b></p> <p><b>Indoor/Outdoor Housing</b></p> <ul style="list-style-type: none"> <li>Dustproof and waterproof, excellent durability : IP67 certified</li> <li>Equipped with fan, heater and temperature sensor (STH-370PO/360PO)</li> <li>Easy installation with rotating housing connection plate</li> <li>1 P66 (STH-370PO/360PO)</li> </ul>	<p><b>STH-370PE</b></p> <p><b>In-Ceiling Housing</b></p> <ul style="list-style-type: none"> <li>For flush-mounting a PTZ dome camera to a ceiling</li> <li>Quick and easy installation</li> <li>Excellent durability</li> </ul>	<p><b>STB-496PPV</b></p> <p><b>Pendant Mount</b></p> <ul style="list-style-type: none"> <li>For hanging a PTZ dome camera from a ceiling</li> <li>Installed combined with STH-380PO/370PI/PO/360PO PTZ dome camera housing</li> </ul>
<p><b>STB-270PWW</b></p> <p><b>Wall Mount</b></p> <ul style="list-style-type: none"> <li>For installing a PTZ dome camera on a wall</li> <li>Quick and easy installation</li> <li>Excellent durability</li> </ul>	<p><b>STB-270B</b></p> <p><b>Wall Setup Box</b></p> <ul style="list-style-type: none"> <li>For installing a PTZ dome camera on a wall</li> <li>Installed in combination with STB-270PWW</li> <li>Quick and easy installation : Contains adapter storage</li> <li>Excellent durability</li> </ul>	<p><b>STB-30PF</b></p> <p><b>Ceiling Flange</b></p> <ul style="list-style-type: none"> <li>For fixing STH-380PO/370PI/PO/360PO PTZ dome camera housing to a pole</li> <li>Excellent durability, Quick installation</li> </ul>	<p><b>STB-25PF</b></p> <p><b>Flange</b></p> <ul style="list-style-type: none"> <li>For connecting a PTZ dome camera directly to STB-496PPV bracket</li> <li>Quick and easy installation</li> </ul>
<p><b>STB-370PC</b></p> <p><b>Ceiling Mount</b></p> <ul style="list-style-type: none"> <li>For attaching a PTZ dome camera to a ceilings without a bracket</li> <li>Neat design suitable for any interior</li> <li>Quick and easy installation</li> </ul>	<p><b>STB-330PPM</b></p> <p><b>Pole Mount</b></p> <ul style="list-style-type: none"> <li>For fixing a PTZ dome camera to a pole</li> <li>Installed in combination with STB-270PWW</li> <li>Quick and easy installation</li> <li>Excellent durability</li> </ul>	<p><b>STB-340PCM</b></p> <p><b>Corner Mount</b></p> <ul style="list-style-type: none"> <li>For installing a PTZ dome camera on a wall corner</li> <li>Installed in combination with STB-270PWW</li> <li>Quick and easy installation</li> <li>Designed to suit any interior</li> </ul>	<p><b>STB-350PPM</b></p> <p><b>Parapet Mount</b></p> <ul style="list-style-type: none"> <li>For installing a PTZ dome camera in a higher-than-wall location</li> <li>Installed in combination with the STB-30PF</li> </ul>