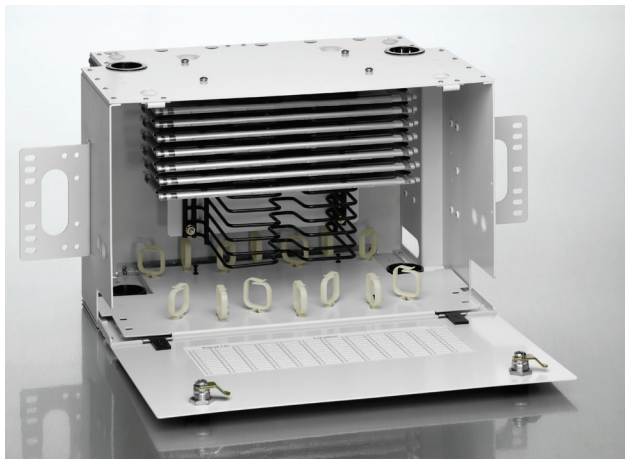


LightSpace™ DPS Series Optical Splice Enclosure

APPLICATION

Leviton's LightSpace DPS Series Optical Splice Enclosures are designed to protect, manage and organize fiber splices in a rack mount environment. LGX® compatibility allows users to fill and expand legacy systems. All enclosures feature a unique tray holder that allows users to select from a variety of splice tray styles, including 12 and 24 fiber versions. Units can be purchased separately or in combination.



SPECIFICATION

Optical Distribution Enclosures shall protect, manage and organize fiber splices in a rack mount environment. Enclosures shall be LGX compatible and shall include locking options for increased security.

FEATURES

- Accepts Leviton standard splice trays
- 19" and 23" rack mounting
- Constructed of high-strength aluminum
- Removable hinged front door and hinged rear door
- Flipcard for connector identification
- Large cable management rings for enhanced jumper routing
- Metal door for added security
- Key lock option for restricted access
- Stackable for custom applications
- Cable clamp kits for additional cable strain relief
- Grounding kit available

DESIGN CONSIDERATIONS

- Use to protect, manage and organize fiber terminations and splices in a rack-mount environment.
- LGX compatible.

STANDARDS COMPLIANCE

Meets NEBS GR-63.

PHYSICAL SPECIFICATIONS

Dimensions

DPS-525:	5.24"H x 17.0"W x 11.0"D
DPS-700:	6.99"H x 17.0"W x 11.0"D
DPS-105:	10.49"H x 17.0"W x 11.0"D

WARRANTY INFORMATION

For a copy of Leviton product warranties, visit www.leviton.com.

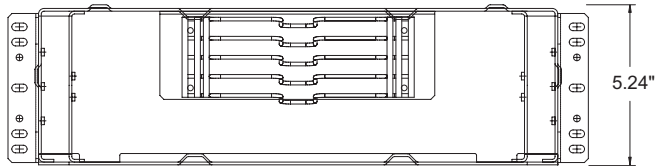
DPS-525	DPS-700	DPS-105
Holds up to 4 Splice Trays Accepts all tray sizes Standard Tray: 4" x 11.75"	Holds up to 6 Splice Trays Accepts all tray sizes Standard Tray: 4" x 11.75"	Holds up to 12 Splice Trays Accepts all tray sizes Standard Tray: 4" x 11.75"

DPS3U-STD DPS4U-STD DPS6U-STD

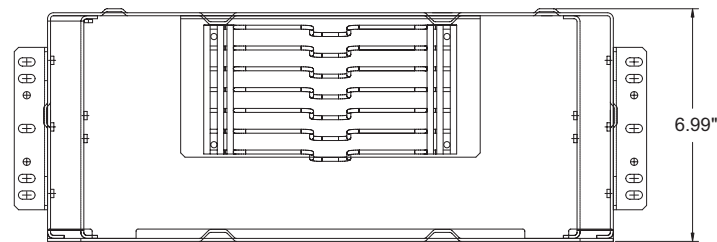


ELECTRONIC FILES

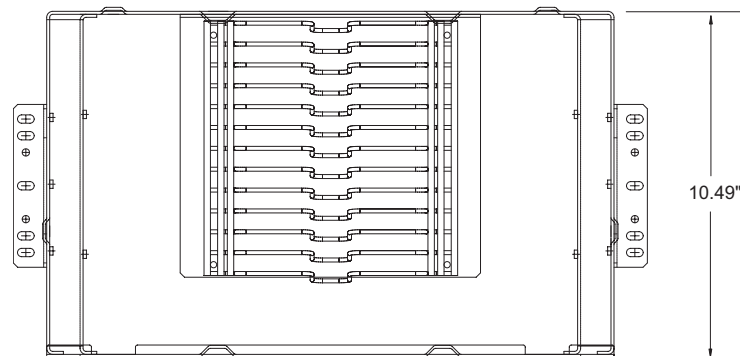
For CAD files, Typical specs, or Dimensional Line Art. (.DXF, .DWG, MS-DOS.eps or .TXT), visit www.leviton.com.



DPS-525



DPS-700



DPS-105

DPS3U-STD DPS4U-STD DPS6U-STD

PART NUMBERS

Description	Part No.
DPS-525 Optical Splice Enclosure, 3RU	DPS3U-STD
DPS-700 Optical Splice Enclosure, 4RU	DPS4U-STD
DPS-105 Optical Splice Enclosure, 6RU	DPS6U-STD
Grounding Kit	DPGRD-KIT
Key Lock Kit	DPLOK-KIT
Universal Cable Clamp Kit (.25" - 1.25" Dia)	DPCMP-UNV

NOTE: Part numbers are for unconfigured product
 Illustrations not to scale

