



Mighty Mo[®] Cabinets

designed for superior
performance



 **legrand[®]**

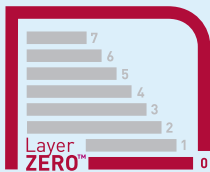
Ortronics

Mighty Mo[®]

A home your network deserves.

For optimal performance, start with
the foundation of your network.

Layer Zero[™] Network Design



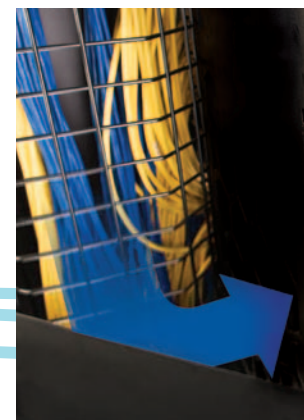
Legrand/Ortronics is revolutionizing networking by adding a new layer to the traditional network architecture. The OSI network model is the accepted framework for network design and suggests seven layers to use for network planning. The bottom layer of this model is Layer One – the physical layer, which is the structured cabling itself, but what Layer One does not include is the physical SUPPORT, or the infrastructure, for the cabling.

Legrand/Ortronics introduces Layer Zero as a new foundation for the OSI model to address the critical role that infrastructure plays in network performance and provide a new level of stability to the network.

To ensure maximum network efficiency, we offer a complete range of Layer Zero solutions designed to:

- Reduce power consumption and cooling costs
- Reduce the risk of equipment failure
- Enhance overall system performance

Three key factors are essential considerations when evaluating cable management systems for today's data centers, storage area networks (SAN), and large premise networks.



Protection & Performance

To ensure maximum network performance, Mighty Mo cable management systems protect patch cords, cable, and equipment ports from damage by maintaining proper bend radius requirements, reducing tension on plugs and jacks, protecting network equipment ports, and supporting large cable bundles within the cabinet.

Density

Mighty Mo cable management systems are fully equipped to handle the density of today's high performance networks while allowing for easy moves, adds, and changes. The Mighty Mo cabinet cable management system provides ample capacity for a minimum of 48 Category 6a patch cords per rack unit on a single side of the equipment, which is often necessary to avoid a fan tray, power supply or other removable part of the equipment.

Airflow

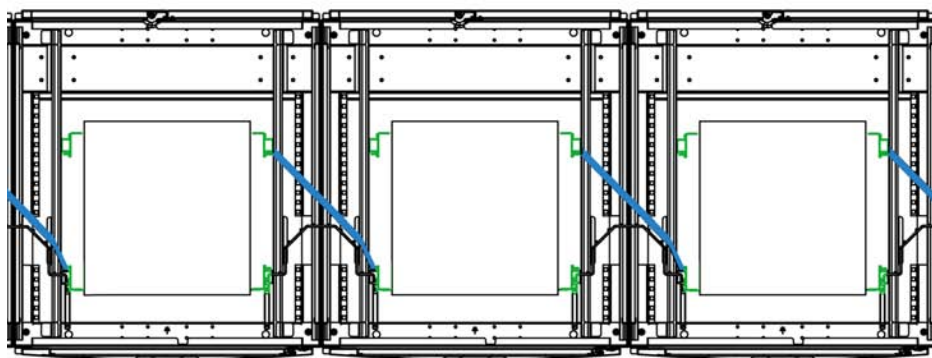
The heat generated from increased server densities and higher speed network equipment makes cooling a top concern for today's IT administrators and data center managers. With heat being the most common reason for equipment failures, proper cooling is essential to reliable operations. Designed specifically to improve airflow, Ortronics® Mighty Mo cabinet design enables more efficient cooling and reduces power consumption.

Cabinet Tested

MIGHTY MO®

TEST.03

Section view of test layout

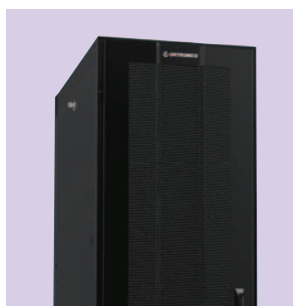


Reduce Energy Consumption with the innovative Ortronics® Mighty Mo cabinet airflow baffle system

The heat generated from increased server densities and higher speed network equipment makes cooling a top concern for today's IT administrators and data center managers. With heat being the most common reason for equipment failures, proper cooling is essential to reliable operations. The preferred method of cooling in today's data centers is

the cold-aisle/hot-aisle approach.

The innovative Mighty Mo cabinet airflow baffle system is designed to redirect airflow from side venting equipment from the cold aisle to the hot aisle to maintain maximum cooling. The baffle is a full height barrier that allows only cold-aisle air to the equipment and also provides a complete

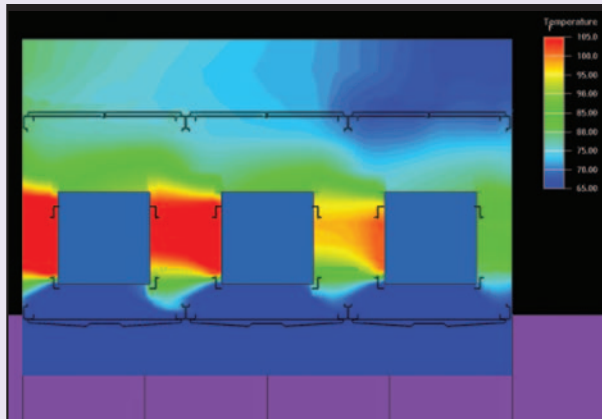


barrier to eliminate hot air recirculation. Blanking panels help to prevent the unintended flow of air through the rack.

The fluid dynamics analysis to the right

THE INNOVATIVE
MIGHTY MO CABINET
AIRFLOW BAFFLE
SYSTEM IS
DESIGNED TO
REDIRECT AIRFLOW
FROM SIDE VENTING
EQUIPMENT FROM
THE COLD AISLE
TO THE HOT AISLE
TO MAINTAIN
MAXIMUM COOLING.

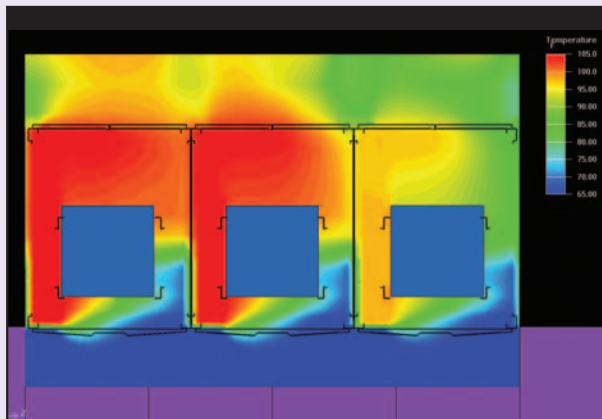
illustrates the significant cooling effect of the airflow baffle system versus alternative methods. The models show the analysis of the thermal characteristics of three network cabinets at the center of a row within the data center. Each cabinet is loaded with side to side venting switches and front vertical managers with a cable fill rate of 40%.



TEST.01

Typical cabinet without dividers or Airflow Baffles

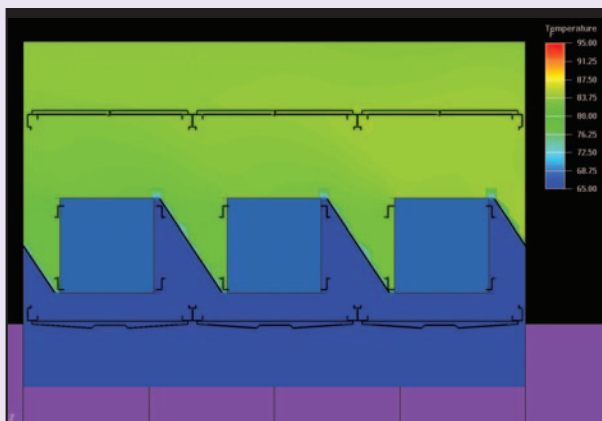
When side venting equipment is mounted in typical cabinets without side panels or dividers even maintaining the recommended distance between the equipment does not provide adequate cooling in a cold-aisle/hot-aisle environment. The problem with this approach is that it allows much of the exhaust of one switch to enter the intake of the next switch. Each switch down the row is receiving less cooling, even though the cold aisle air temperature is set at an appropriate 65° to 70°F.



TEST.02

Typical cabinet with Cabinet Dividers

Adding divider panels does little to improve the cooling in a cold-aisle/hot-aisle environment. This approach allows both the cold aisle and the hot aisle to provide air to the intake of the equipment. As the hot air is exhausted it recirculates back to the intake side of the equipment. Again each switch is receiving less cool air as you go down the row.

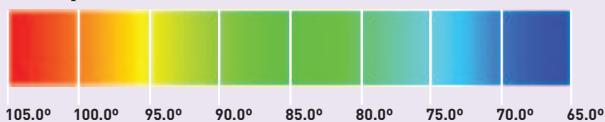


TEST.03

Mighty Mo® Cabinet with Mighty Mo Airflow Baffles

When using the Mighty Mo cabinet airflow baffles the intake air is always supplied from the cold aisle and the exhaust is directed by the baffles to the hot aisle. The use of filler panels on the rear rails in addition to the full height airflow baffles eliminates the recirculation of hot air within the cabinets.

Temperature Control



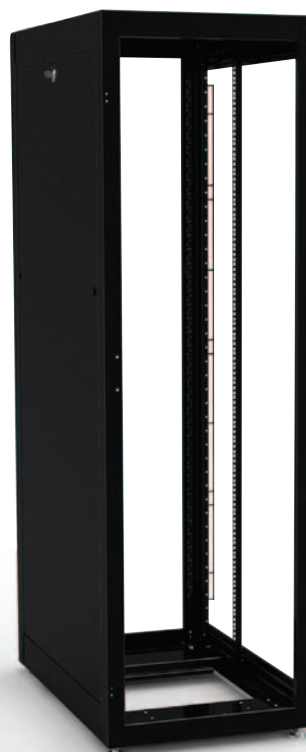
The first two examples show hot and cold air mixing at the intake with exhaust temperatures reaching the 105°F mark. The Mighty Mo cabinet airflow baffle solution reduces the exhaust temperature by 20°. This reduction allows the data center temperature set point to be raised, creating significant OPEX savings.

Cabinet Features

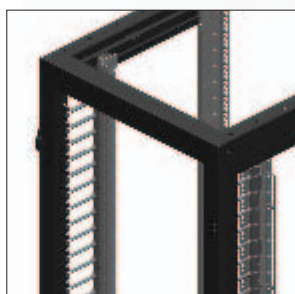
MIGHTY MO®

Mighty Mo

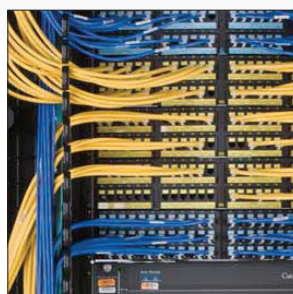
Everything your network could want in a cabinet.



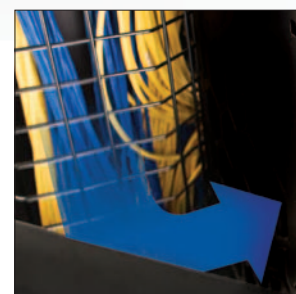
FULLY CONFIGURABLE
Mighty Mo® cabinets are built to your configuration and arrive fully assembled with all components installed and accessories included, reducing equipment deployment time and overall costs.



HEAVY-DUTY 14 GAUGE CONSTRUCTION
Our standard 14ga. welded steel frame offers improved durability over conventional 16 ga. cabinets. Mighty Mo doors are especially designed to eliminate the irritating flex found in less well built cabinets.



CABLE MANAGEMENT
Mighty Mo vertical and horizontal managers provide improved management for both servers and high density switches. Available bend limiters provide standards compliant protection for fiber and 10G copper patch cords.



PASSIVE THERMAL MANAGEMENT
Mighty Mo baffles redirect the airflow of side vented equipment from front to rear ensuring the proper flow of air from cold aisle to hot aisle.



07

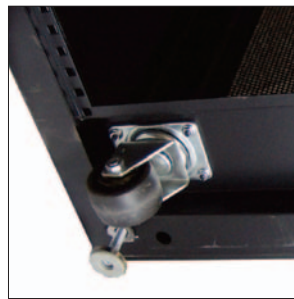
WWW.LEGRAND.US/ORTRONICS

**THERMAL PROTECTION**

A wide selection of top panels, fans and doors are available to ensure adequate ventilation is provided to keep equipment at the optimal operating conditions.

**SECURITY**

Doors include locking handles to prevent unauthorized access and tampering. Side panels also come equipped with locks.

**MOBILITY**

Levelers come standard with frames. Swivel casters are optional for added mobility.

**180° DOOR SWING
WITH SELF-CONTAINED HINGES**

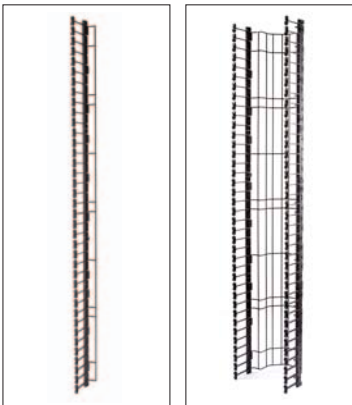
Self-contained 180 degree hinges used on our surface mount doors have no removable pins that can be lost! These hinges eliminate aisle blockage when loading or performing maintenance on equipment without removing the door.



Cabinet System

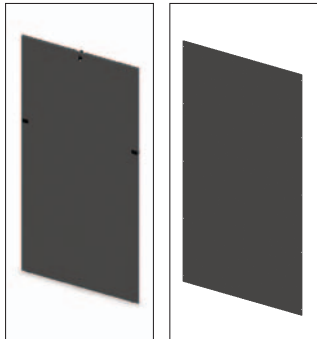
MIGHTY MO®

VERTICAL MANAGERS



See pages 18-19 for more details

SIDE PANELS



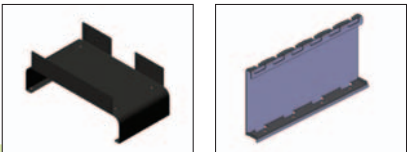
See page 16 for more details

DOORS

See pages 13-15 for more details

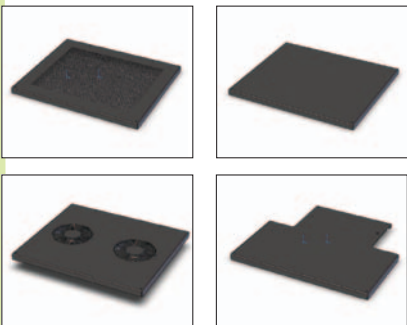


CABLE TROUGHS



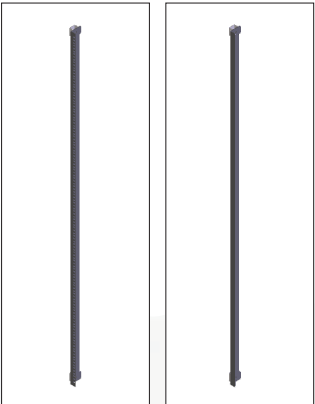
See page 20 for more details

TOP PANELS & OPTIONS



See page 17 for more details

MOUNTING RAILS



See page 12 for more details

Pre-Configured

MIGHTY MO® CABINET BUILD

Legrand | Ortronics
has assembled some
of the most popular
cabinet sizes and
accessories together
into easy to order
part numbers.

Pre-Configured Server Cabinets

All pre-configured server cabinet versions include:

- Frame configured with cable opening at bottom rear
- Frame levelers
- Two pairs of RU labeled mounting rails with 3/8" square holes
- Full profile mesh front door
- Split flat mesh rear door
- Two "L" shaped finger managers on rear rails
- Vertical PDU mount and lacing bar
- Divider or side panels as stated below
- Solid top panel in front
- Cable entry top panel in rear
- Rack unit cage nuts #12-24 thread (package of 50)
- Two packages of 50 panel mounting screws #12-24 (total of 100)
- Additional adhesive rack unit labels (mounted inside of rear set of rails)

PART NO. Divider Version	PART NO. Side Panels Version	DESCRIPTION Server Cabinet Sizes (Depth includes doors)
MMC422440-00005	MMC422440-00006	42 RU x 24" wide x 42" deep
MMC422446-00002	MMC422446-00003	42 RU x 24" wide x 48" deep
MMC472440-00003	MMC472440-00004	47 RU x 24" wide x 42" deep
MMC472446-00001	MMC472446-00002	47 RU x 24" wide x 48" deep
MMC423240-0000G	MMC423240-0000H	42 RU x 32" wide x 42" deep
MMC423246-00007	MMC423246-00008	42 RU x 32" wide x 48" deep
MMC473240-00003	MMC473240-00004	47 RU x 32" wide x 42" deep
MMC473246-00001	MMC473246-00002	47 RU x 32" wide x 48" deep

"Divider" versions have a right side divider panel and ganging hardware (for within row)

"Side Panels" versions have a set of end panels (for stand alone or to create ends of row)

Pre-Configured Network Cabinets

All pre-configured network cabinet versions include:

- Frame configured with cable opening at bottom front
- Frame levelers
- Two pairs of RU labeled mounting rails with #12-24 tapped holes
- Full profile plexiglas front door
- Full flat solid rear door
- Two "L" shaped finger managers on front rails
- Right and left locking side panels
- Fan top panel in front
- Cable entry top panel in rear
- Package of 50 panel mounting screws #12-24

Network Cabinet	Network Cabinet Size
MMC422434-00004	42 RU x 24" W x 36" D
MMC423234-0000A	42 RU x 32" W x 36" D

Configuration

MIGHTY MO® CABINET SYSTEM

➔ The following pages display all the components needed to configure your cabinet

The Mighty Mo® cabinet frame is specifically designed with cable pathways where you need them. In order to maximize the benefit of this design, first select between a **server** or **network** frame orientation.



SERVER FRAME



NETWORK FRAME

SERVER FRAMES OFFER

- Cable openings positioned at the rear of the frame to support rack mounted servers
- Rack mounting rails positioned to match the most current servers
- Optional vertical managers mounted in the rear of the cabinet to manage the server cables

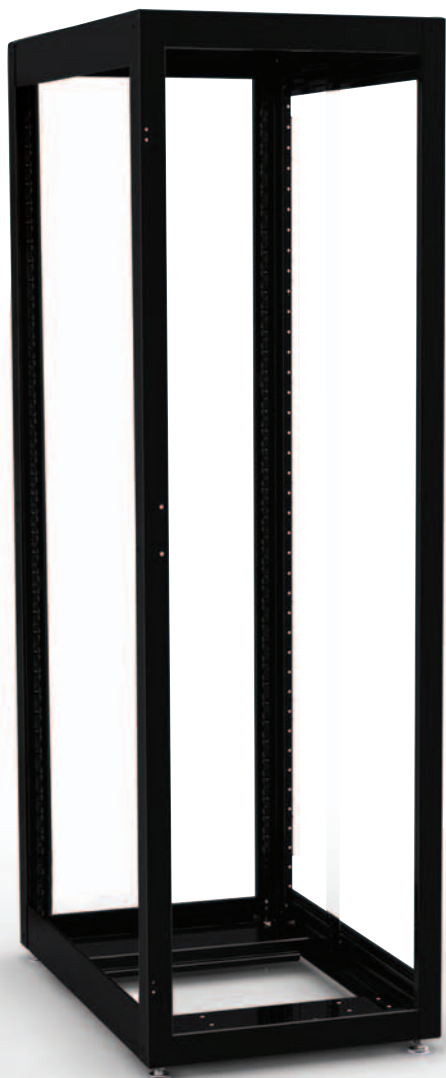
NETWORK FRAMES OFFER

- Cable openings positioned at the front of the frame to support network equipment and copper and fiber panels
- Rack mounting rails positioned to match the most widely used equipment
- Optional vertical managers mounted in the front of the cabinet to manage the patching field

After selecting your frame color and size, continue building your custom cabinet by selecting mounting rails, doors, side panels, top panels and options. To receive a bill of materials for your custom, configured cabinet, please contact your local Ortronics sales representative.

Frames

MIGHTY MO® CABINET BUILD



FRAME FEATURES

- EIA mounting rails ordered separately
- Fully welded 14 GA (.075") steel construction
- 2000 lb. static frame load capacity
- Top, side, and bottom cable access
- Includes holes (with caps) on side for ganging frames

Mighty Mo® cabinet frames consist of a fully welded frame and come standard with leveling feet. Casters are available as a configurable option. The optional doors, top panels and side panels are removable allowing simple integration of equipment and cabling into the cabinet. Overall cabinet depth, including doors, is 2" larger than listed frame dimensions.

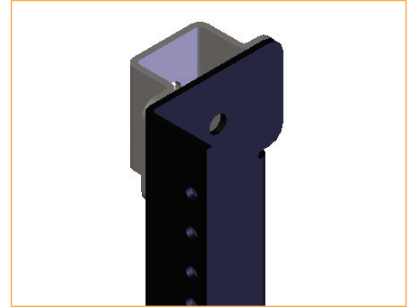
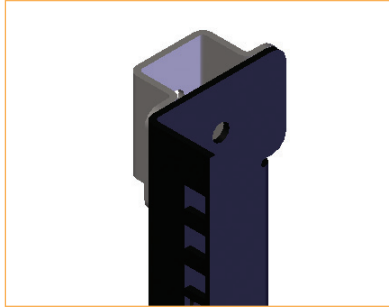
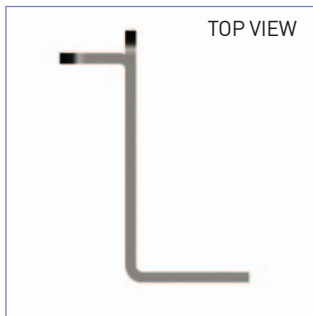
PART NO.	DESCRIPTION
OR-MMC242434-B	24U x 24"W x 34"D, height is 48.75", Basic Black
OR-MMC422434-B	42U x 24"W x 34"D, height is 80.25", Basic Black
OR-MMC423234-B	42U x 32"W x 34"D, height is 80.25", Basic Black
OR-MMC472434-B	47U x 24"W x 34"D, height is 89", Basic Black
OR-MMC473234-B	47U x 32"W x 34"D, height is 89", Basic Black
OR-MMC422440-B	42U x 24"W x 40"D, height is 80.25", Basic Black
OR-MMC422446-B	42U x 24"W x 46"D, height is 80.25", Basic Black
OR-MMC423240-B	42U x 32"W x 40"D, height is 80.25", Basic Black
OR-MMC423246-B	42U x 32"W x 46"D, height is 80.25", Basic Black
OR-MMC472440-B	47U x 24"W x 40"D, height is 89", Basic Black
OR-MMC472446-B	47U x 24"W x 46"D, height is 89", Basic Black
OR-MMC473240-B	47U x 32"W x 40"D, height is 89", Basic Black
OR-MMC473246-B	47U x 32"W x 46"D, height is 89", Basic Black

NOTE: Replace 'B' with 'G' for Cool Gray.

NOTE: The height of the cabinet includes levelers. Casters add 1.25" to the height of the cabinet.

Mounting Rails

MIGHTY MO® CABINET BUILD



Mighty Mo® cabinet mounting rails are available with either .375" square holes or #12-24 tapped holes. The tapped holes allow fast installation of network equipment. Square holes are ideal for server environments and require cage nuts and screws (sold separately, see page 16) for mounting equipment.

- Manufactured of 12GA (0.105") steel
- Z-shape for increased rail strength
- Fully adjustable front to back
- Mounting hardware included
- Each item includes one pair of rails

PART NO.	DESCRIPTION
OR-MMC2424M38-B	24U, 0.375" Square Holes for 24"W Frame - 1 pair with RU labels, Basic Black
OR-MMC2424M12-B	24U, #12-24 Tapped Holes for 24"W Frame - 1 pair with RU labels, Basic Black
OR-MMC4224M38-B	42U, 0.375" Square Holes for 24"W Frame - 1 pair with RU labels, Basic Black
OR-MMC4224M12-B	42U, #12-24 Tapped Holes for 24"W Frame - 1 pair with RU labels, Basic Black
OR-MMC4724M38-B	47U, 0.375" Square Holes for 24"W Frame - 1 pair with RU labels, Basic Black
OR-MMC4724M12-B	47U, #12-24 Tapped Holes for 24"W Frame - 1 pair with RU labels, Basic Black

Casters



OR-MMCCAS-SW-3

Swivel casters available as an option for the bottom of cabinet frame.

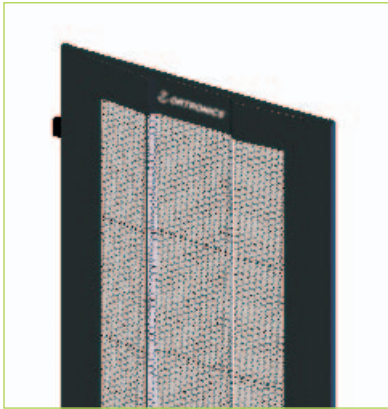
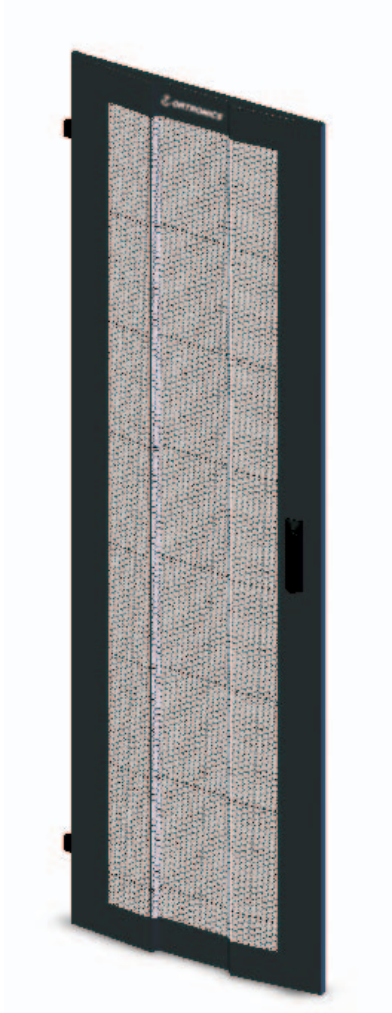
PART NO.	DESCRIPTION
OR-MMCCAS-SW-3	Casters, Swivel, 3" diameter, Quantity: 4

Doors

MIGHTY MO® CABINET BUILD

13

WWW.LEGRAND.US/ORTRONICS



The **full profile mesh** door consists of an 18 GA (0.048") steel door with welded outside frame and center mesh with .197" diameter holes on .230" staggered centers. The profile shape increases the airflow area by 72" square inches over typical flat doors. This door is used for securing the interior contents while allowing for maximum airflow through the cabinet. It is typically used on the front of the cabinet to maintain a front-to-back airflow pattern.



The **full profile plexiglas** door is manufactured from 18 GA (0.048") steel and Lexan®. This door is used for viewing the interior contents while preventing air from entering or exiting. It is typically used on the front of the cabinet when using fans to maintain a bottom-to-top airflow pattern.

NOTE:

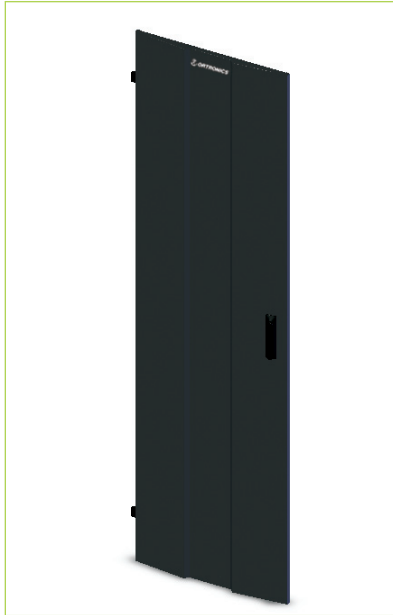
- All full width doors are shipped left-hinged and are field reversible.

PART NO.	DESCRIPTION
OR-MMC2424DFPM-B	Full Profile Mesh for 24U x 24"W Frame - Basic Black
OR-MMC4224DFPM-B	Full Profile Mesh for 42U x 24"W Frame - Basic Black
OR-MMC4232DFPM-B	Full Profile Mesh for 42U x 32"W Frame - Basic Black
OR-MMC4724DFPM-B	Full Profile Mesh for 47U x 24"W Frame - Basic Black
OR-MMC4732DFPM-B	Full Profile Mesh for 47U x 32"W Frame - Basic Black
OR-MMC2424DFPP-B	Full Profile Plexi for 24U x 24"W Frame - Basic Black
OR-MMC4224DFPP-B	Full Profile Plexi for 42U x 24"W Frame - Basic Black
OR-MMC4232DFPP-B	Full Profile Plexi for 42U x 32"W Frame - Basic Black
OR-MMC4724DFPP-B	Full Profile Plexi for 47U x 24"W Frame - Basic Black
OR-MMC4732DFPP-B	Full Profile Plexi for 47U x 32"W Frame - Basic Black

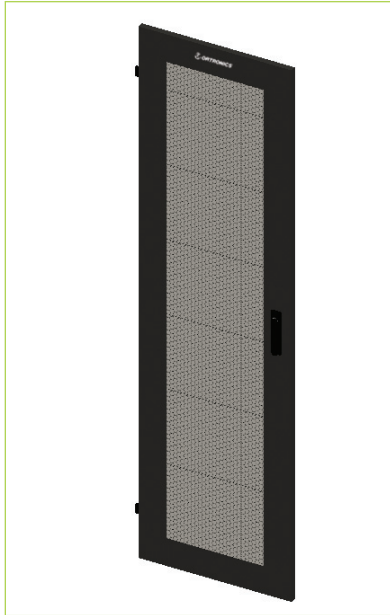
NOTE: Replace 'B' with 'G' for Cool Gray.

Doors

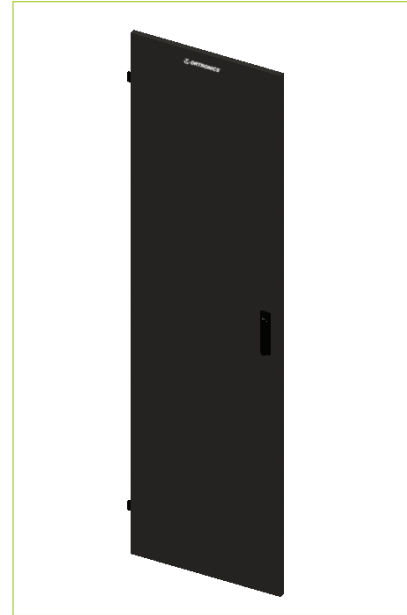
MIGHTY MO® CABINET BUILD



The **full profile solid** door is manufactured from 18 GA (0.048") steel. This type of door is used for hiding the interior contents while preventing air from entering or exiting. It is typically used on the front of the cabinet when using fans to maintain a bottom-to-top airflow pattern.



The **full flat mesh** door consists of an 18 GA (0.048") steel door with welded outside frame and center mesh with .197" diameter holes on .230" staggered centers. This option is commonly used for the rear door when maintaining a front-to-back airflow pattern.



The **full flat solid** door is manufactured from 18 GA (0.048") steel. This door option is used to prevent access to cabinet's contents, while containing airflow. It is commonly used for the rear of the cabinet while maintaining bottom-to-top airflow pattern using fans.

PART NO.	DESCRIPTION
OR-MMC2424DFPS-B	24U x 24"W Frame, Basic Black
OR-MMC4224DFPS-B	42U x 24"W Frame, Basic Black
OR-MMC4232DFPS-B	42U x 32"W Frame, Basic Black
OR-MMC4724DFPS-B	47U x 24"W Frame, Basic Black
OR-MMC4732DFPS-B	47U x 32"W Frame, Basic Black

NOTE: Replace 'B' with 'G' for Cool Gray.

PART NO.	DESCRIPTION
OR-MMC2424DFFM-B	24U x 24"W Frame, Basic Black
OR-MMC4224DFFM-B	42U x 24"W Frame, Basic Black
OR-MMC4232DFFM-B	42U x 32"W Frame, Basic Black
OR-MMC4724DFFM-B	47U x 24"W Frame, Basic Black
OR-MMC4732DFFM-B	47U x 32"W Frame, Basic Black

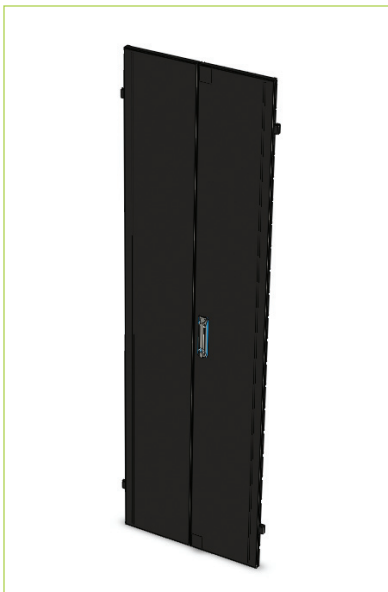
NOTE: Replace 'B' with 'G' for Cool Gray.

PART NO.	DESCRIPTION
OR-MMC2424DFFS-B	24U x 24"W Frame, Basic Black
OR-MMC4224DFFS-B	42U x 24"W Frame, Basic Black
OR-MMC4232DFFS-B	42U x 32"W Frame, Basic Black
OR-MMC4724DFFS-B	47U x 24"W Frame, Basic Black
OR-MMC4732DFFS-B	47U x 32"W Frame, Basic Black

NOTE: Replace 'B' with 'G' for Cool Gray.



The **split flat mesh** door consists of an 18 GA (0.048") steel door with welded outside frame and center mesh with .197" diameter holes on .230" staggered centers. This option is commonly used as the rear door when space is limited, to maintain front-to-rear airflow pattern. See pages 10 and 11 for other mesh door options.



The **split flat solid** door is manufactured from 18 GA (0.048") steel. This type of door is used for hiding the interior contents while preventing air from entering or exiting. This is typically used on the rear of the cabinet, with limited space, when using fans to maintain bottom-to-top airflow.

PART NO.	DESCRIPTION
OR-MMC2424DSFM-B	24U x 24"W Frame, Basic Black
OR-MMC4224DSFM-B	42U x 24"W Frame, Basic Black
OR-MMC4232DSFM-B	42U x 32"W Frame, Basic Black
OR-MMC4724DSFM-B	47U x 24"W Frame, Basic Black
OR-MMC4732DSFM-B	47U x 32"W Frame, Basic Black

NOTE: Replace 'B' with 'G' for Cool Gray.

PART NO.	DESCRIPTION
OR-MMC2424DSFS-B	24U x 24"W Frame, Basic Black
OR-MMC4224DSFS-B	42U x 24"W Frame, Basic Black
OR-MMC4232DSFS-B	42U x 32"W Frame, Basic Black
OR-MMC4724DSFS-B	47U x 24"W Frame, Basic Black
OR-MMC4732DSFS-B	47U x 32"W Frame, Basic Black

NOTE: Replace 'B' with 'G' for Cool Gray.

DOOR HANDLES

Choice of swing handle with keyed lock or swing handle with combination/key lock.

They are keyed alike to match front, rear and side panel locks.

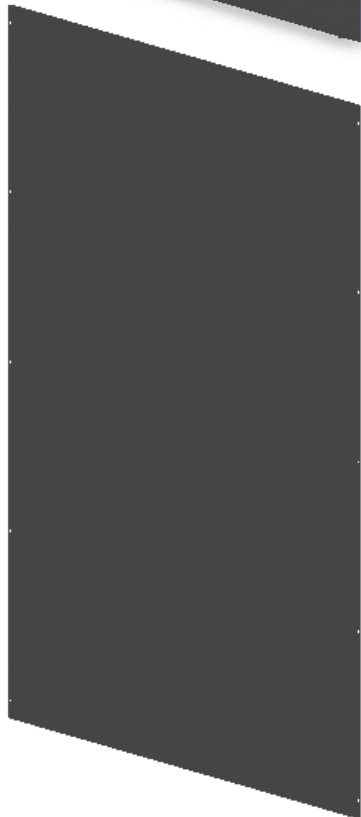


PART NO.	Description
OR-MMCDHSKL-0333	Swing, Key Lock, Key# 0333
OR-MMCDHSCK-0333	Swing, Combination/Key Lock, Key#0333



Side Panels

MIGHTY MO® CABINET BUILD



Each item consists of one side panel or one interbay divider panel. Use side panels to enclose a single cabinet or on the end of a row. Interbay dividers separate ganged cabinets from each other and contain airflow within individual cabinets in a row

- Side panels include latches and locks
- Interbay dividers include mounting hardware

SIDE PANEL

PART NO.	DESCRIPTION
OR-MMC2434SPSL-B	Solid, Locking for 24U x 34"D Frame, Basic Black
OR-MMC4234SPSL-B	Solid, Locking for 42U x 34"D Frame, Basic Black
OR-MMC4240SPSL-B	Solid, Locking for 42U x 40"D Frame, Basic Black
OR-MMC4246SPSL-B	Solid, Locking for 42U x 46"D Frame, Basic Black
OR-MMC4734SPSL-B	Solid, Locking for 47U x 34"D Frame, Basic Black
OR-MMC4740SPSL-B	Solid, Locking for 47U x 40"D Frame, Basic Black
OR-MMC4746SPSL-B	Solid, Locking for 47U x 46"D Frame, Basic Black

NOTE: Replace 'B' with 'G' for Cool Gray.

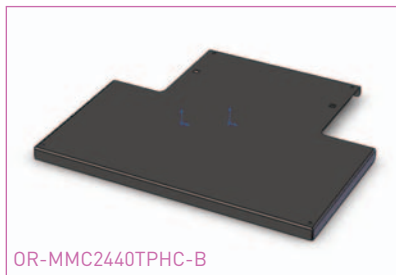
INTERBAY DIVIDER PANEL

PART NO.	DESCRIPTION
OR-MMC4234SPSN-B	Solid, Bolt-on for 42U x 34"D Frame, Basic Black
OR-MMC4240SPSN-B	Solid, Bolt-on for 42U x 40"D Frame, Basic Black
OR-MMC4246SPSN-B	Solid, Bolt-on for 42U x 46"D Frame, Basic Black
OR-MMC4734SPSN-B	Solid, Bolt-on for 47U x 34"D Frame, Basic Black
OR-MMC4740SPSN-B	Solid, Bolt-on for 47U x 40"D Frame, Basic Black
OR-MMC4746SPSN-B	Solid, Bolt-on for 47U x 46"D Frame, Basic Black

NOTE: Replace 'B' with 'G' for Cool Gray.

Top Panels

MIGHTY MO® CABINET BUILD



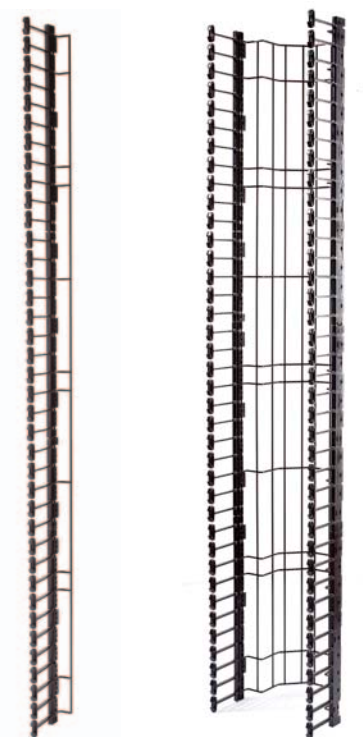
Top panels are half-depth allowing for customization of the front and rear top of the cabinet. A combination of solid and cable entry versions are recommended for front-to-back airflow. Mesh is well suited for passive dissipation. Fan version is supplied with two 235 CFM 6" diameter fans and finger guards to create bottom-to-top airflow.

PART NO.	DESCRIPTION
OR-MMC2434TPHS-B	Solid for 24"W x 34"D Frames, Basic Black
OR-MMC2440TPHS-B	Solid for 24"W x 40"D Frames, Basic Black
OR-MMC2446TPHS-B	Solid for 24"W x 46"D Frames, Basic Black
OR-MMC3234TPHS-B	Solid for 32"W x 34"D Frames, Basic Black
OR-MMC3240TPHS-B	Solid for 32"W x 40"D Frames, Basic Black
OR-MMC3246TPHS-B	Solid for 32"W x 46"D Frames, Basic Black
OR-MMC2434TPHM-B	Mesh for 24"W x 34"D Frames, Basic Black
OR-MMC2440TPHM-B	Mesh for 24"W x 40"D Frames, Basic Black
OR-MMC2446TPHM-B	Mesh for 24"W x 46"D Frames, Basic Black
OR-MMC3234TPHM-B	Mesh for 32"W x 34"D Frames, Basic Black
OR-MMC3240TPHM-B	Mesh for 32"W x 40"D Frames, Basic Black
OR-MMC3246TPHM-B	Mesh for 32"W x 46"D Frames, Basic Black
OR-MMC2434TPHC-B	Cable Entry for 24"W x 34"D Frames, Basic Black
OR-MMC2440TPHC-B	Cable Entry for 24"W x 40"D Frames, Basic Black
OR-MMC2446TPHC-B	Cable Entry for 24"W x 46"D Frames, Basic Black
OR-MMC3234TPHC-B	Cable Entry for 32"W x 34"D Frames, Basic Black
OR-MMC3240TPHC-B	Cable Entry for 32"W x 40"D Frames, Basic Black
OR-MMC3246TPHC-B	Cable Entry for 32"W x 46"D Frames, Basic Black
OR-MMC2434TPH1-B	Fan - (2) 6" 235 CFM ea. 120V for 24"W x 34"D Frames, Basic Black
OR-MMC2440TPH1-B	Fan - (2) 6" 235 CFM ea. 120V for 24"W x 40"D Frames, Basic Black
OR-MMC2446TPH1-B	Fan - (2) 6" 235 CFM ea. 120V for 24"W x 46"D Frames, Basic Black
OR-MMC3234TPH1-B	Fan - (2) 6" 235 CFM ea. 120V for 32"W x 34"D Frames, Basic Black
OR-MMC3240TPH1-B	Fan - (2) 6" 235 CFM ea. 120V for 32"W x 40"D Frames, Basic Black
OR-MMC3246TPH1-B	Fan - (2) 6" 235 CFM ea. 120V for 32"W x 46"D Frames, Basic Black
OR-MMC2434TPH2-B	Fan - (2) 6" 235 CFM ea. 208V for 24"W x 34"D Frames, Basic Black
OR-MMC2440TPH2-B	Fan - (2) 6" 235 CFM ea. 208V for 24"W x 40"D Frames, Basic Black
OR-MMC2446TPH2-B	Fan - (2) 6" 235 CFM ea. 208V for 24"W x 46"D Frames, Basic Black
OR-MMC3234TPH2-B	Fan - (2) 6" 235 CFM ea. 208V for 32"W x 34"D Frames, Basic Black
OR-MMC3240TPH2-B	Fan - (2) 6" 235 CFM ea. 208V for 32"W x 40"D Frames, Basic Black
OR-MMC3246TPH2-B	Fan - (2) 6" 235 CFM ea. 208V for 32"W x 46"D Frames, Basic Black

NOTE: Replace 'B' with 'G' for Cool Gray.

Vertical Managers

MIGHTY MO® CABINET BUILD

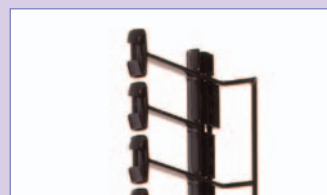


OR-MMC4202VMFL, OR-MMC4212VMFU

Mighty Mo® cabinet **vertical managers** protect patch cords, cable, and equipment ports from damage by maintaining proper bend radius requirements, reducing tension on plugs and jacks and protecting network equipment ports.

PART NO.	DESCRIPTION
OR-MMC2402VMFL	Vertical Manager Fingers "L" Shape 1.5"W for 24U Frames
OR-MMC4202VMFL	Vertical Manager Fingers "L" Shape 1.5"W for 42U Frames
OR-MMC4702VMFL	Vertical Manager Fingers "L" Shape 1.5"W for 47U Frames
OR-MMC4212VMFU	Vertical Manager Fingers "U" Shape 12"W for 42U Frames
OR-MMC4712VMFU	Vertical Manager Fingers "U" Shape 12"W for 47U Frames

WHAT'S YOUR SHAPE?



The **L shape** 1.5" version fits in single or ganged 24" and 32" wide cabinets. (with or without interbay divider panels).



The **U shape** 12" version fits in ganged 32" cabinets and can be used with baffles to create cold aisle/hot aisle airflow from side venting equipment.

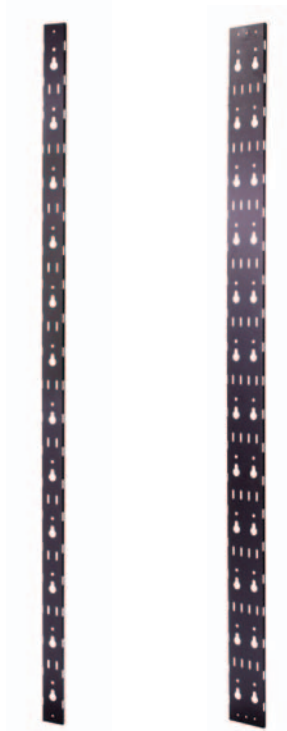
CABLE FILL CAPACITIES FOR VERTICAL MANAGERS

PART NUMBER	DESCRIPTION	USABLE AREA 24 WIDE CABINET (SQ. IN.) *	USABLE AREA 32 WIDE CABINET (SQ. IN.) *	RECOMMENDED CABLE FILL 40%			
				CABLE	CAT 5E	CAT 6	CAT 6A
				O.D. (IN.)	0.215	0.230	0.290
OR-MMC2402VMFL	Vertical Manager Fingers "L" Shape 1.5"W for 24U Frames	24			288	240	168
OR-MMC4202VMFL	Vertical Manager Fingers "L" Shape 1.5"W for 42U Frames	24			288	240	168
OR-MMC4202VMFL	Vertical Manager Fingers "L" Shape 1.5"W for 42U Frames		56		672	560	392
OR-MMC4702VMFL	Vertical Manager Fingers "L" Shape 1.5"W for 47U Frames	24			288	240	168
OR-MMC4702VMFL	Vertical Manager Fingers "L" Shape 1.5"W for 47U Frames		56		672	560	392
OR-MMC4212VMFU	Vertical Manager Fingers "U" Shape 12"W for 42U Frames		90		1080	900	630
OR-MMC4712VMFU	Vertical Manager Fingers "U" Shape 12"W for 47U Frames		90		1080	900	630

*Usable area is calculated using managers on both sides of the cabinet. The "U" Shape vertical extends between two cabinets but the capacity is calculated for the two sides of a single cabinet.

Vertical Managers

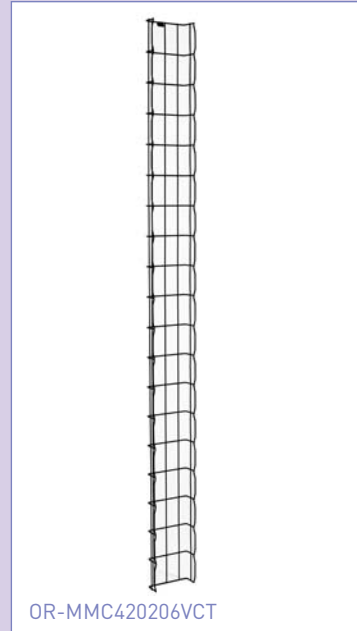
MIGHTY MO® CABINET BUILD



OR-MMC42VPMLS, OR-MMC42VPMLD

Vertical PDU mount and lacing bars can be used to mount PDUs or to manage distribution cables routing from patch panels and equipment out of the cabinet.

PART NO.	DESCRIPTION
OR-MMC24VPMLS	Vertical PDU Mount and Lacing Bar Single for 24U Frames
OR-MMC42VPMLS	Vertical PDU Mount and Lacing Bar Single for 42U Frames
OR-MMC47VPMLS	Vertical PDU Mount and Lacing Bar Single for 47U Frames
OR-MMC24VPMLD	Vertical PDU Mount and Lacing Bar Double for 24U Frames
OR-MMC42VPMLD	Vertical PDU Mount and Lacing Bar Double for 42U Frames
OR-MMC47VPMLD	Vertical PDU Mount and Lacing Bar Double for 47U Frames



OR-MMC420206VCT

Vertical Cable Trays consist of a pre-cut section of 2" x 6" Cablofil® tray and mounting hardware designed to mount inside the cabinet and manage distribution cables routing from the patch panels and equipment out of the cabinet. It mounts to the strut inside the cabinet and can be adjusted front to back.

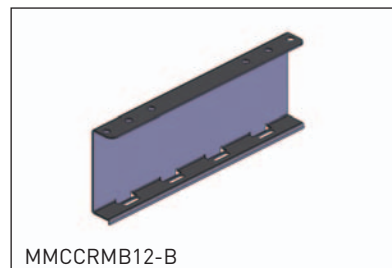
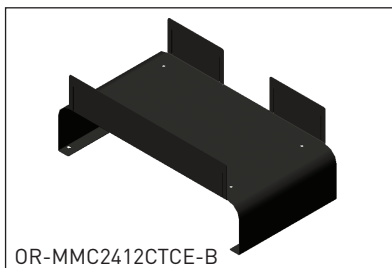
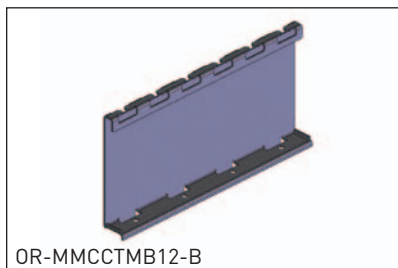
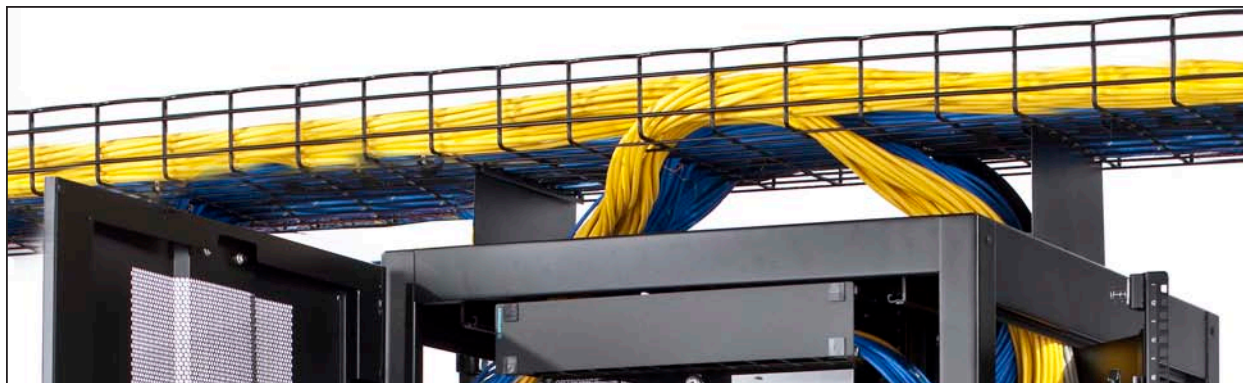
PART NO.	DESCRIPTION
OR-MMC420206VCT	Vertical Cable Tray 2" Wide X 6" Deep for 42U Frames
OR-MMC470206VCT	Vertical Cable Tray 2" Wide X 6" Deep for 47U Frames

HORIZONTAL CABLE CAPACITIES FOR VERTICAL CABLE TRAY

PART NO.	DESCRIPTION	USABLE AREA (SQ. IN.)	24 CNT BUNDLE CABLE	VERTICAL CABLE TRAY CAPACITY		
			O.D. (in.)	Cat 5e	Cat 6	Cat 6a
OR-MMC420206VCT	Vertical Cable Tray 2" Wide X 6" Deep for 42U Frames	14		1.125"	1.25"	1.625"
OR-MMC470206VCT	Vertical Cable Tray 2" Wide X 6" Deep for 47U Frames	14		240	168	96
				240	168	96

Tray/Runway Brackets & Troughs

MIGHTY MO® CABINET BUILD



Cable tray mounting brackets

mount to the top of the cabinet and utilize the Cablofil FAS method to attach cable tray without additional hardware. Cable tray mounting brackets can be used alone or with the cable troughs. **Cable troughs** mount on top of the cabinet frame and provide integrated overhead routing for cable. They are sized and pre-punched to interface with 6", 12" and 18" Cablofil® cable tray directly, or can be used together with the cable tray mounting bracket. **Cable runway mounting brackets** mount to the top of the cabinet and provide a surface for attaching 6", 12" or 18" wide runway.

Cable tray mounting brackets

PART NO.	DESCRIPTION
OR-MMCCTMB06-B	Cable Tray Mounting Bracket with Cablofil FAS style attachment for 6" wide tray, Basic Black
OR-MMCCTMB12-B	Cable Tray Mounting Bracket with Cablofil FAS style attachment for 12" wide tray, Basic Black
OR-MMCCTMB18-B	Cable Tray Mounting Bracket with Cablofil FAS style attachment for 18" wide tray, Basic Black

NOTE: Replace 'B' with 'G' for Cool Gray.

Cable troughs

PART NO.	DESCRIPTION
OR-MMC2406CTCE-B	Cable Trough, Center Exit, 6" Wide for 24"W Frames, Basic Black
OR-MMC2412CTCE-B	Cable Trough, Center Exit, 12" Wide for 24"W Frames, Basic Black
OR-MMC2418CTCE-B	Cable Trough, Center Exit, 18" Wide for 24"W Frames, Basic Black
OR-MMC3206CTCE-B	Cable Trough, Center Exit, 6" Wide for 32"W Frames, Basic Black
OR-MMC3212CTCE-B	Cable Trough, Center Exit, 12" Wide for 32"W Frames, Basic Black
OR-MMC3218CTCE-B	Cable Trough, Center Exit, 18" Wide for 32"W Frames, Basic Black

NOTE: Replace 'B' with 'G' for Cool Gray.

Cable runway mounting brackets

PART NO.	DESCRIPTION
OR-MMCCRMB06-B	Cable Runway Mounting Bracket for 6" wide runway, Basic Black
OR-MMCCRMB12-B	Cable Runway Mounting Bracket for 12" wide runway, Basic Black
OR-MMCCRMB18-B	Cable Runway Mounting Bracket for 18" wide runway, Basic Black

NOTE: Replace 'B' with 'G' for Cool Gray.

Accessories

MIGHTY MO® CABINET BUILD

21

WWW.LEGRAND.US/ORTRONICS

HARDWARE



OR-MMCMBK



OR-RU-1224CN



OR-MMCCUN-1420-10

The Ortronics® line of cabinet hardware provides the products needed to complete your installation. Rack Unit Cage Nuts enable easy and quick installation of three cage nuts simultaneously.

PART NO.	DESCRIPTION
OR-60400533	Panel Mounting Screw, #12-24 x .625", package of 50, Basic Black
OR-PS-M6X1-50	Panel Mounting Screw, M6X1 x .625" long, package of 50, Clear
OR-RU-1224CN	Rack Unit Cage Nuts, #12-24 thread, package of 50, Clear
OR-RU-M6X1CN	Rack Unit Cage Nuts, M6X1 thread, package of 50, Clear
OR-PS-1224CN	Single Hole Cage Nuts, #12-24 thread, package of 50, Clear
OR-PS-M6X1CN	Single Hole Cage Nuts, M6X1 thread, package of 50, Clear
OR-MMCCNT00L	Cage Nut Installation Tool
OR-MMCMBK	Multi-Bay Hardware Kit, 6 each 1/4-20 bolts and nuts
OR-MMCCUN-1420-10	Unistrut® Hardware Kit, 10 each 1/4-20 bolts and Unistrut nuts
OR-MMCCRULBL-60-A	Adhesive Rack Unit Label, 60 RU length
OR-MM6BLC	Mighty Mo Bend Limiting Clip, 3.25" long, snaps onto fingers

LEVELERS/ISOLATION



OR-MMCLVL-IP

Levelers come standard with the cabinet frame; however, additional parts may be ordered. Isolation bushings are used to isolate the anchoring hardware from the frame of the cabinet.

PART NO.	DESCRIPTION
OR-MMCLVL-IP	Levelers, 1/2-13 thread with Isolation Pads, Quantity: 4
OR-MMCCISOB-38	Isolation Bushing for 3/8" Hardware, Quantity: 4
OR-MMCCISOB-50	Isolation Bushing for 1/2" Hardware, Quantity: 4

SHELVES & DRAWERS



OR-MMCCR2-1915

Ortronics/Legrand offers a full range of sturdy equipment shelves and drawers to protect and support valuable equipment.

- Mounting hardware is included
- Color is basic black

PART NO.	DESCRIPTION
OR-MMCCSS1-1912	Cantilevered Shelf, 1U, Solid, Steel, 19" x 12"D
OR-MMCCSS2-1915	Cantilevered Shelf, 2U, Solid, Steel, 19" x 15"D
OR-MMCCSS3-1915	Cantilevered Shelf, 3U, Solid, Steel, 19" x 15"D
OR-MMCCSV1-1912	Cantilevered Shelf, 1U, Vented, Steel, 19" x 12"D
OR-MMCCSV2-1915	Cantilevered Shelf, 2U, Vented, Steel, 19" x 15"D
OR-MMCCSV3-1915	Cantilevered Shelf, 3U, Vented, Steel, 19" x 15"D
OR-MMCCFSV-1926	19" x 26" Deep, 4-point rackmount vented fixed shelf
OR-MMCCSVL-1924	Sliding Shelf, 19" EIA, 24"D Vented, 4 Point, 100lb load rated
OR-MMCCSVM-1924	Sliding Shelf, 19" EIA, 24"D Vented, 4 Point, 150lb load rated
OR-MMCCSVH-1930	Sliding Shelf, 19" EIA, 30"D Vented, 4 Point, 300lb load rated
OR-MMCCR2-1915	Drawer, 2U, 19" x 15"D
OR-MMCCR4-1915	Drawer, 4U, 19" x 15"D

Accessories

MIGHTY MO® CABINET BUILD

FILLER PANELS, BAFFLES & HORIZONTAL MANAGERS

- Improve network performance with improved separation of the hot and cold aisle by utilizing filler panels to control airflow
- Use the 19" rack mount fan panel to eliminate hot spots



OR-MMCFANP19-4-2

- Airflow baffles ensure the proper flow of air from cold aisle to hot aisle, even with side ventilated equipment



OR-MMCAB421612

- Ortronics horizontal managers organize cables and maximize system performance



OR-MM6HMF2RU

PART NO.	DESCRIPTION
OR-MMCFPS-1-B	Filler Panel, 1 Rack Unit, #12-24 Mtg. Hdware
OR-MMCFPS-2-B	Filler Panel, 2 Rack Unit, #12-24 Mtg. Hdware
OR-MMCFPS-3-B	Filler Panel, 3 Rack Unit, #12-24 Mtg. Hdware
OR-MMCFPS-4-B	Filler Panel, 4 Rack Unit, #12-24 Mtg. Hdware
OR-MMCFPS-5-B	Filler Panel, 5 Rack Unit, #12-24 Mtg. Hdware
OR-MMCFPS-6-B	Filler Panel, 6 Rack Unit, #12-24 Mtg. Hdware
OR-MMCFPT-1-B	Filler Panel Tool-less, 1 Rack Unit
OR-MMCFPT-2-B	Filler Panel Tool-less, 2 Rack Unit
OR-MMCFPT-3-B	Filler Panel Tool-less, 3 Rack Unit
OR-MMCFPT-4-B	Filler Panel Tool-less, 4 Rack Unit
OR-MMCFPT-8-B	Filler Panel Tool-less, 8 Rack Unit
OR-MMCFANP19-4-2	Fan Panel, 19", (2) 4" 110 CFM ea., 120 Volt, 24" Cord
OR-MMCAB421612	Airflow Baffle, for 32" wide 42 RU frame when mounting rails are set at 16-1/4" front to rear and "U" shape vertical is installed
OR-MMCAB423012	Airflow Baffle, for 32" wide 42 RU frame when mounting rails are set at 30" front to rear and "U" shape vertical is installed
OR-MMCAB471612	Airflow Baffle, for 32" wide 47 RU frame when mounting rails are set at 16-1/4" front to rear and "U" shape vertical is installed
OR-MMCAB473012	Airflow Baffle, for 32" wide 47 RU frame when mounting rails are set at 30" front to rear and "U" shape vertical is installed
OR-MMCAB421632SA	Airflow Baffle, for 32" wide 42 RU frame when mounting rails are set at 16-1/4" front to rear and side panels are installed
OR-MMCAB471632SA	Airflow Baffle, for 32" wide 47 RU frame when mounting rails are set at 30" front to rear and side panels are installed
OR-MM6HMF1RU	Horizontal Manager, Fingers, Cover, 1 Rack Unit
OR-MM6HMF2RU	Horizontal Manager, Fingers, Cover, 2 Rack Unit
OR-60400131	Horizontal Manager, 5 Steel Rings, 3.5" Deep, 1 Rack Unit
OR-60400057	Horizontal Manager, 5 Steel Rings, 4" Deep, 2 Rack Unit

FANS & BLOWERS



OR-MMCFAN-6

Replacement fans for the fan top plate. Fans include the cord, finger guard and mounting hardware.

PART NO.	DESCRIPTION
OR-MMCFAN-6	Replacement fan for top panels, 6" diameter, 120 Volt, 235 CFM, 24" Cord, Basic Black
OR-MMCFAN-6-2	Replacement fan for top panels, 6" diameter, 208 Volt, 235 CFM, 24" Cord, Basic Black

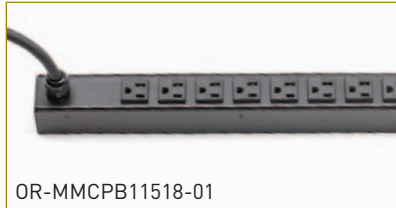
Accessories

MIGHTY MO® CABINET BUILD

23

WWW.LEGRAND.US/ORTRONICS

BASIC PDU



Increased processing speeds require additional power distributed to each cabinet. Managing the power while minimizing the interference with the rack equipment and airflow is critical. The Ortronics® range includes 120V and 208V basic power distribution in 15, 20 and 30 amp sizes. Hardware is included to mount to vertical PDU mounting bar.

PART NO.	DESCRIPTION
OR-MMCPB11510-01	Basic 17.5" Horizontal PDU, 120V 15A, (10) NEMA 5-15 outlets, 5-15P input plug w/10' cord
OR-MMCPB11518-01	Basic 29.5" Vertical PDU, 120V 15A, (18) NEMA 5-15 outlets, 5-15P input plug w/10' cord
OR-MMCPB11524-01	Basic 66.5" Vertical PDU, 120V 15A, (24) NEMA 5-15 outlets, 5-15P input plug w/10' cord
OR-MMCPB12010-01	Basic 17.5" Horizontal PDU, 120V 20A, (10) NEMA 5-20 outlets, L5-20P input plug w/10' cord
OR-MMCPB12018-01	Basic 29.5" Vertical PDU, 120V 20A, (18) NEMA 5-20 outlets, L5-20P input plug w/10' cord
OR-MMCPB12024-01	Basic 66.5" Vertical PDU, 120V 20A, (24) NEMA 5-20 outlets, L5-20P input plug w/10' cord
OR-MMCPB13016-01	Basic 29.5" Vertical PDU, 120V 30A, (16) NEMA 5-20 outlets, L5-30P input plug w/10' cord
OR-MMCPB13024-01	Basic 66.5" Vertical PDU, 120V 30A, (24) NEMA 5-20 outlets, L5-30P input plug w/10' cord
OR-MMCPB22012-01	Basic 17.5" Horizontal PDU, 208V 20A, (12) IEC C13 outlets, L6-20P input plug w/10' cord
OR-MMCPB22018-01	Basic 29.5" Vertical PDU, 208V 20A, (18) IEC C13 outlets, L6-20P input plug w/10' cord
OR-MMCPB22024-01	Basic 66.5" Vertical PDU, 208V 20A, (24) IEC C13 outlets, L6-20P input plug w/10' cord
OR-MMCPB23016-01	Basic 29.5" Vertical PDU, 208V 30A, (16) IEC C13 outlets, L6-30P input plug w/10' cord
OR-MMCPB23024-01	Basic 66.5" Vertical PDU, 208V 30A, (24) IEC C13 outlets, L6-30P input plug w/10' cord
OR-MMCPB23024-02	Basic 66.5" Vertical PDU, 208V 30A, (20) IEC (4) IEC C19 outlets, L6-30P input plug w/10' cord

METERED PDU



Increased processing speeds require additional power distributed to each cabinet. Monitoring and managing the power while minimizing the interference with the rack equipment and airflow is critical. Ortronics options include 120V and 208V metered power distribution in 20 and 30 amp sizes. Hardware is included to mount to vertical PDU mounting bar.

PART NO.	DESCRIPTION
OR-MMCPM12010-01	Metered 17.5" Horizontal PDU, 120V 20A, (10) NEMA 5-20 outlets, L5-20P input plug w/10' cord
OR-MMCPM12018-01	Metered 29.5" Vertical PDU, 120V 20A, (18) NEMA 5-20 outlets, L5-20P input plug w/10' cord
OR-MMCPM12024-01	Metered 66.5" Vertical PDU, 120V 20A, (24) NEMA 5-20 outlets, L5-20P input plug w/10' cord
OR-MMCPM13016-01	Metered 29.5" Vertical PDU, 120V 30A, (16) NEMA 5-20 outlets, L5-30P input plug w/10' cord
OR-MMCPM13024-01	Metered 66.5" Vertical PDU, 120V 30A, (24) NEMA 5-20 outlets, L5-30P input plug w/10' cord
OR-MMCPM22012-01	Metered 17.5" Horizontal PDU, 208V 20A, (12) IEC C13 outlets, L6-20P input plug w/10' cord
OR-MMCPM22018-01	Metered 29.5" Vertical PDU, 208V 20A, (18) IEC C13 outlets, L6-20P input plug w/10' cord
OR-MMCPM22024-01	Metered 66.5" Vertical PDU, 208V 20A, (24) IEC C13 outlets, L6-20P input plug w/10' cord
OR-MMCPM23016-01	Metered 29.5" Vertical PDU, 208V 30A, (16) IEC C13 outlets, L6-30P input plug w/10' cord
OR-MMCPM23024-01	Metered 66.5" Vertical PDU, 208V 30A, (24) IEC C13 outlets, L6-30P input plug w/10' cord
OR-MMCPM23024-02	Metered 66.5" Vertical PDU, 208V 30A, (20) IEC (4) IEC C19 outlets, L6-30P input plug w/10' cord

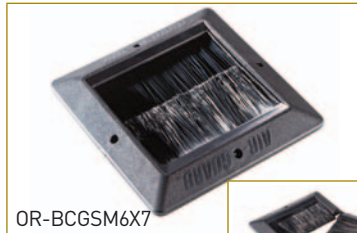
Air Guard® Brush Cable Grommet

MIGHTY MO® CABINET ACCESSORIES

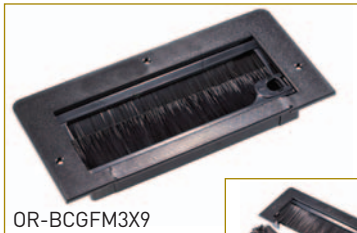


Minimize cool air loss from the data center floor

Brush cable grommets help to prevent air loss in plenum cooled floors when access holes are required for cable routing through the floor.



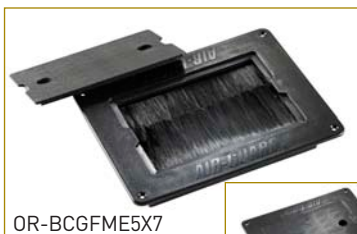
OR-BCGSM6X7



OR-BCGFM3X9



OR-BCGFM3X9



OR-BCGFME5X7



FEATURES & BENEFITS

- Provides an exceptional seal around cables for an effective and economical solution towards eliminating bypass air through cable cutouts.
- Provides an energy savings benefit by reducing cool air loss while improving the static pressure to cool data center equipment.
- Helps prevent network equipment from overheating.
- Seals cable openings with an overlapping brush and/or EPDM gaskets to help prevent under-floor contamination.
- Floor tiles can be removed without disconnecting equipment.
- Flame retardant ABS polycarbonate material provides a finished look.

PART NO.	DESCRIPTION
OR-BCGSM6X7	Surface mount two piece assembly designed to retrofit around existing cables without the need to disconnect cables. Covers any shape or size up to 10" x 10".
OR-BCGFM3X9	Flush mount two piece assembly designed for new installations in data centers to maximize energy efficiency. Designed with a removable back brush that allows for great versatility when floor tiles need to be removed.
OR-BCGFM3X9	Cover fits over the flush mount brush cable grommet to provide a solid surface for increased durability and safety when cables are not going through the floor.
OR-BCGFME5X7	Flush mount Extreme is a heavy duty unit with a two stage, integrated sealing system, EPDM gasket material (UL94 HF-1 rated) and standard Air Guard brush technology, to provide the most effective air seal. A heavy duty, integrated safety cover comes as a standard component. OSHA jobsite statutes require open holes in floor panels to be covered. The cover may remain in place until cabling systems are installed and may be saved for future use.

Wall Mount Cabinets

MIGHTY MO®



The **Mighty Mo wall mount cabinets** utilize advanced cable management to help secure, support and organize your network where floor space is limited.

Providing capacity for both active and passive equipment, the cabinets feature one-rack unit finger style vertical managers to ensure proper cable management for maximum network performance. An optional rear horizontal mount bracket kit is designed to provide 2 additional fixed rack units on the rear wall for mounting fiber, equipment or power distribution units. In addition, the cabinet center section swings out from the wall to provide easy access to the equipment.

The front lockable wing turn latch allows you to secure the front door without having to lock the cabinet. This feature allows for easy access into the front of the cabinet when you are in a secure environment.

The Mighty Mo wall mount cabinets are also an ideal choice for mounting in an open office environment. The cabinet's heavy duty construction minimizes sagging under heavy loads and the optional 50cfm fan is 50% quieter than most other leading cabinets.

FEATURES & BENEFITS

- Cable management to support and organize cables, ensuring proper cable management for minimum distortion and maximum network performance
- Choice of solid or plexiglass door
- The cabinet can be mounted to open left or right
- Locking center section swings out to provide easy access to the equipment
- Front and center sections are keyed alike
- Includes one pair of fully adjustable 12-24 EIA mounting rails
- Brush cable entry plates standard on top rear
- Cable knockout plates standard on bottom rear
- 3" hole with cap standard on top and bottom rear
- Vented sides for passive cooling of active equipment
- Optional 50cfm cooling fans are available to further protect active equipment
- Heavy duty 14 GA (.075") steel construction



Fiber Momentum cassettes can also be mounted in a wall mount cabinet.

Wall Mount Cabinets

MIGHTY MO®



Mighty Mo® wall mount cabinets

PART NO.	DESCRIPTION	WEIGHT CAPACITY
OR-MMW122420S-B	12U x 24"W x 20"D, Solid door, height is 23.50", Basic Black	150 lbs
OR-MMW122420P-B	12U x 24"W x 20"D, Plexiglass door, height is 23.50", Basic Black	150 lbs
OR-MMW192420S-B	19U x 24"W x 20"D, Solid door, height is 35.75", Basic Black	200 lbs
OR-MMW192420P-B	19U x 24"W x 20"D, Plexiglass door, height is 35.75", Basic Black	200 lbs
OR-MMW262420S-B	26U x 24"W x 20"D, Solid door, height is 48.00", Basic Black	300 lbs
OR-MMW262420P-B	26U x 24"W x 20"D, Plexiglass door, height is 48.00", Basic Black	300 lbs
OR-MMW122426S-B	12U x 24"W x 26"D, Solid door, height is 23.50", Basic Black	150 lbs
OR-MMW122426P-B	12U x 24"W x 26"D, Plexiglass door, height is 23.50", Basic Black	150 lbs
OR-MMW192426S-B	19U x 24"W x 26"D, Solid door, height is 35.75", Basic Black	200 lbs
OR-MMW192426P-B	19U x 24"W x 26"D, Plexiglass door, height is 35.75", Basic Black	200 lbs
OR-MMW262426S-B	26U x 24"W x 26"D, Solid door, height is 48.00", Basic Black	300 lbs
OR-MMW262426P-B	26U x 24"W x 26"D, Plexiglass door, height is 48.00", Basic Black	300 lbs

Mighty Mo® wall mount cabinet accessories

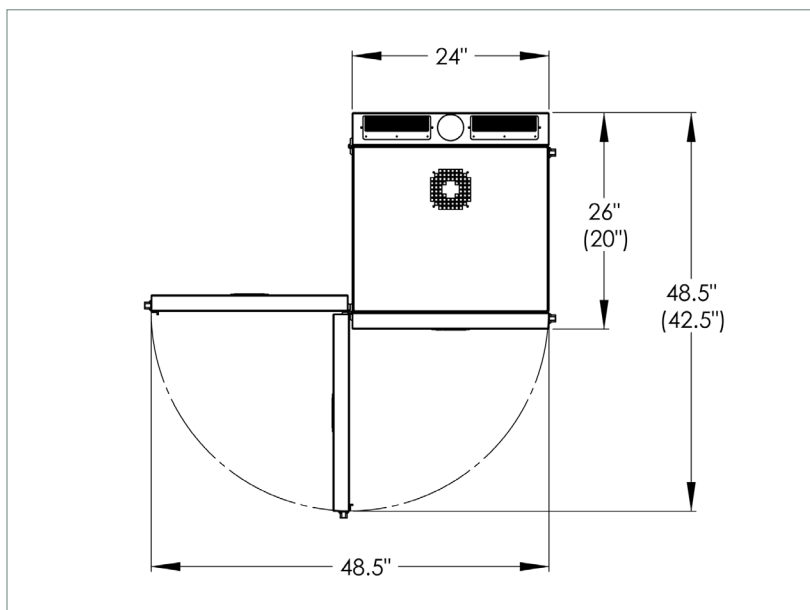
PART NO.	DESCRIPTION
OR-MMCFAN-4-50	Fan Kit, 4", 50cfm
OR-MMWHMBM12-B	Rear Horizontal Mount Bracket Kit
OR-MMWBPK	Brush Plate Kit
OR-MMW12M12-B	12U Mounting Rail, 12-24, 1-pair
OR-MMW19M12-B	19U Mounting Rail, 12-24, 1-pair
OR-MMW26M12-B	26U Mounting Rail, 12-24, 1-pair

Wall Mount Cabinets

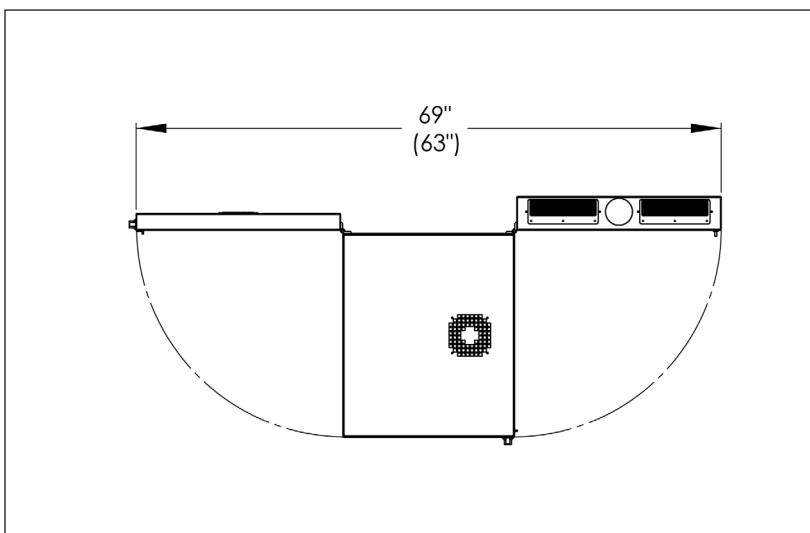
TECHNICAL SPECIFICATIONS

The Mighty Mo® Wall Mount Cabinets are ideal for areas where floor space is limited.

Clearance required for front of cabinet access.



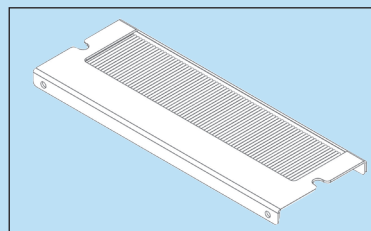
Clearance required for complete cabinet access.



The Mighty Mo wall mount cabinets are supplied with a variety of cable access options in the rear section.

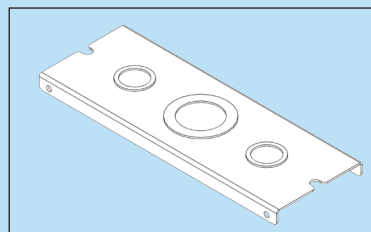
Both the top and the bottom of the rear section have a 3" access hole with a cap that is intended for removal only with access to the inside of cabinet.

The top of the rear section comes standard with two "brush cable entry plates" that provide a total of 28 square inches of cable access while protecting the cabinet from dust and dirt.



The bottom of the rear section comes standard with two knock-out plates.

Each plate contains a center knock-out that can be 1-3/8" or 2" and 2 knock-outs to the left and right that can be 7/8" or 1-1/8".



The brush and knock-out plates are interchangeable and can be moved to any of the four positions on the rear section.

designed to be better.

Canada

570 Applewood Crescent
Vaughan, Ontario L4K 4B4
905.738.9195



Ortronics

125 Eugene O'Neill Drive
New London, CT 06320
800.934.5432
860.445.3900 (sales)
860.405.2992 (fax)
www.legrand.us/ortronics