

IS Series

IP Video Intercom



➔ Building Communication. Controlling Security.

Network-Based Communication



& Security Control

IS Series

More than just an Intercom.

- Unlock doors remotely on a network
- Assist onsite visitors from any offsite phone
- Program daily bulletins & bell schedules
- Broadcast emergency announcements
- Communicate using a PC Master Station



Controlling Security

Offsite Control

The IS Series provides the power to identify or help individuals from another location, whether it is next door, across town, or on the other side of the world.

After Hours

When a building has been locked down for the evening, it does not mean it is unoccupied. Secure the building while still being able to communicate with those who might need access or assistance.

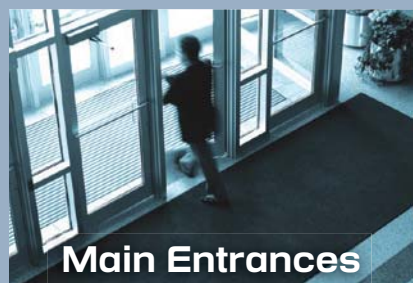
Video Identification

The IS Series video door stations feature a 170° wide angle camera with PanTilt & Zoom control, offering more flexible options for station installation and positioning.

SCHOOLS

**SCHOOL
DISTRICT
OFFICES**

CAMPUSES



Main Entrances

Protect staff by giving them the advantage to safely confirm the identity of visitors and vendors before granting access into the building.



Classrooms

Broadcast messages throughout the school or to a particular classroom with the choice of either a hands-free or handset reply.



Offices

Communicate easily with offices anywhere in the world using standard or PC master stations. Avoid long distance phone charges.

**LARGE
CORPORATIONS**

GOVERNMENT

HOSPITALS

**SMALL
BUSINESSES**

**RETAIL
MALLS**



Reception

Increase staff efficiency by controlling various entrances from a central location. Easily transfer responsibilities to another location or individual.



Delivery Entrances

Identify and communicate with individuals at remote locations to determine if their access into the building is legitimate.

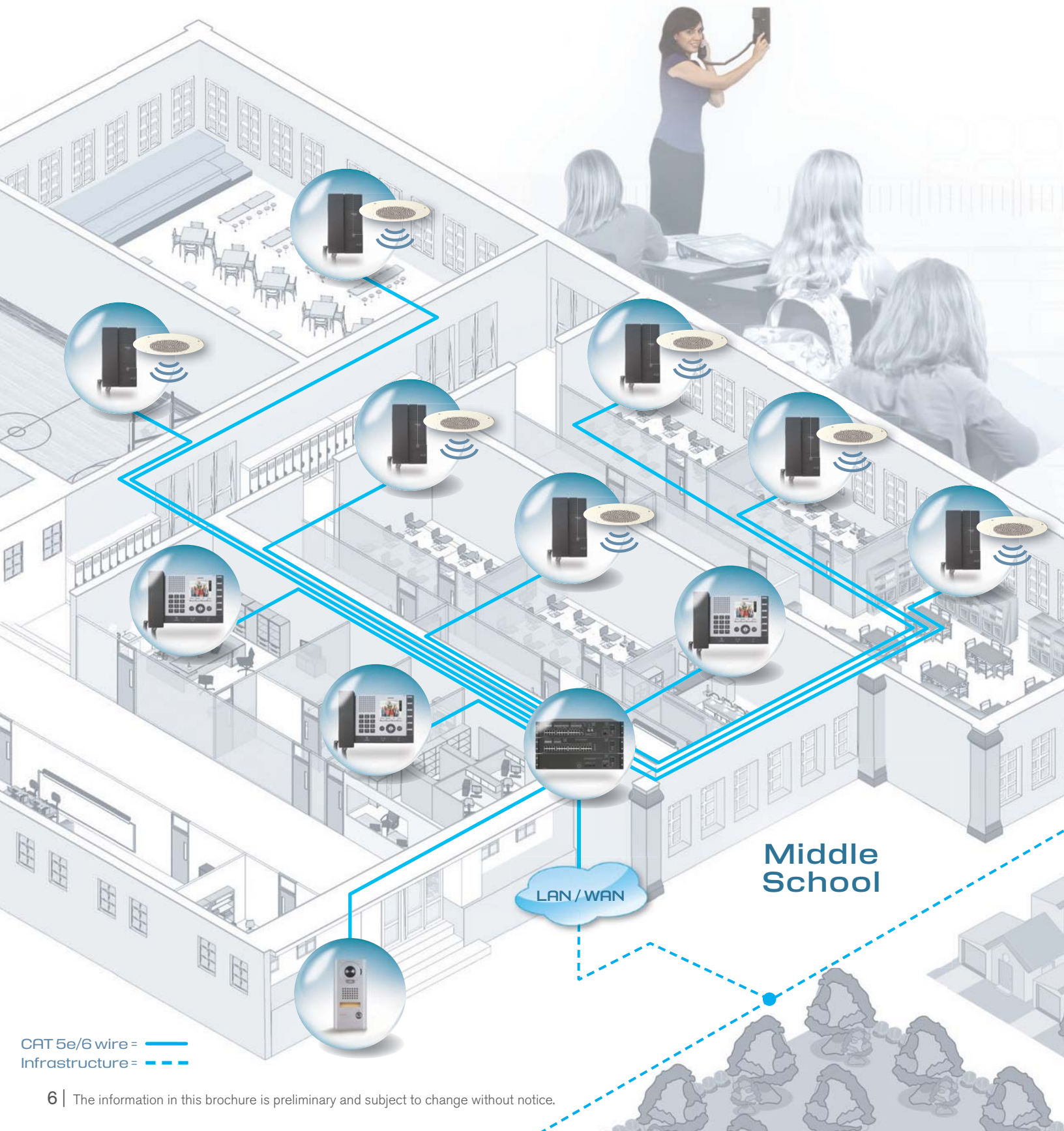


Parking Garages

Assist visitors and monitor multiple garage entrances from remote locations during or after hours.

Building Security

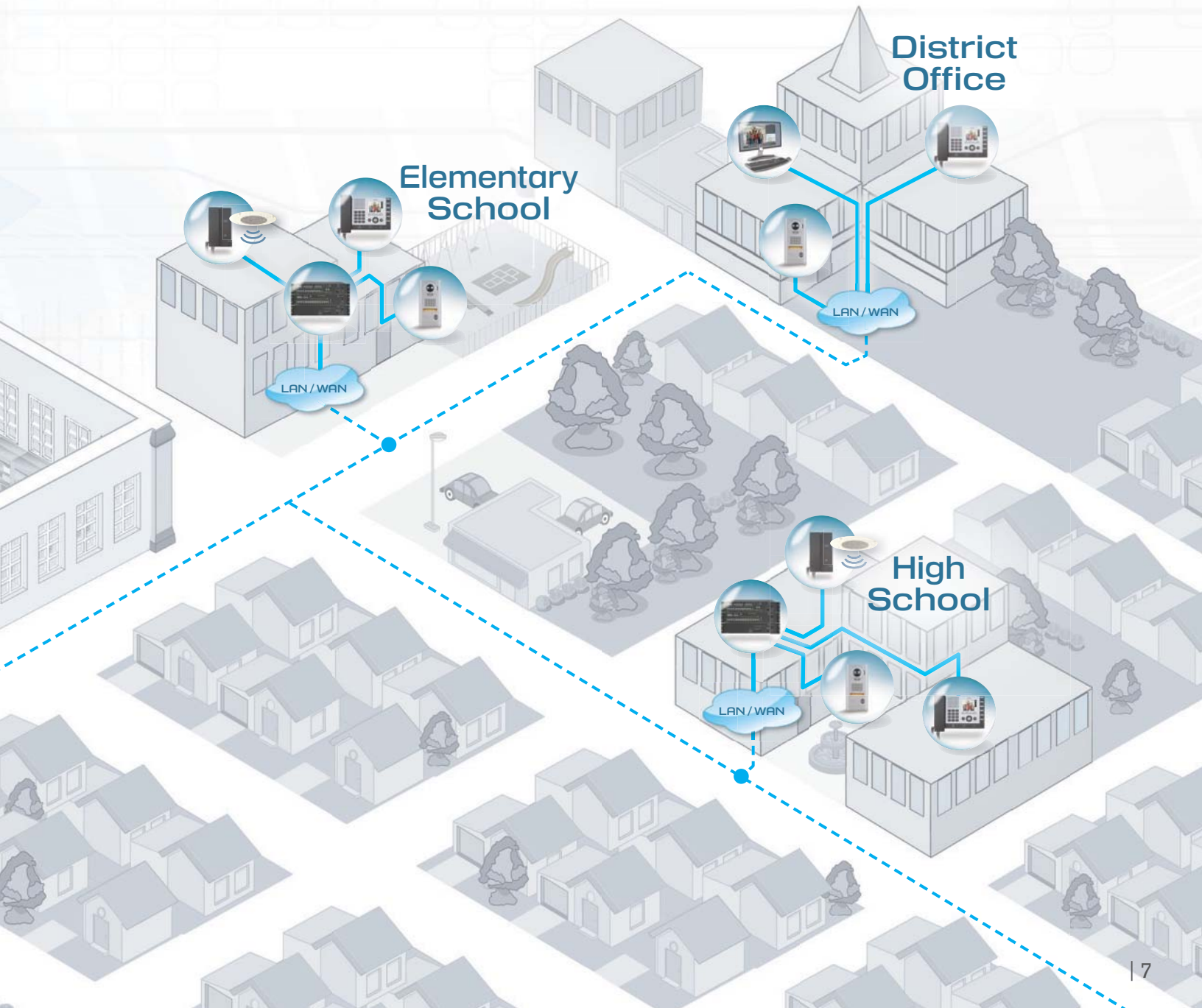
School districts, businesses or multi-building facilities can improve efficiency and decrease costs with centralized security and communication.



CAT 5e/6 wire = ———
Infrastructure = - - - -

Connect Multiple Schools within a District

- **Identify visitors from one school to another**
Install video door stations at entrances to maintain security all day on campus. Keep doors locked while safely identifying visitors.
- **Announce emergencies from any office on the network**
Should a problem arise in the community, schools may be quickly alerted to external threats, even from across town.
- **Communicate with classrooms or exterior buildings**
A room station and an overhead speaker allow for easy communication between offices and faculty around the school or district.



IS Series Components

DOOR/SUB	MASTER	ROOM	IP ADDRESS
160	160	960	32

Per System
32 Systems TOTAL Globally

DOOR/SUB
160

Door & Sub Stations - up to 160 units



IS-DV

Video Door Station

- Dry contact for door release
 - Digital PanTilt & Zoom (PTZ) color video camera
 - 170° viewing area
 - Call button to alert master station(s)
 - Weather & Vandal resistant
 - For indoor or outdoor use
 - Zinc die cast case
 - Surface mount
 - Connects using CAT 5e/6 cable
- 8-1/2" H x 4-3/16" W x 1-1/8" D



IS-DVF

Video Door Station

- Dry contact for door release
 - Digital PanTilt & Zoom color video camera
 - 170° viewing area
 - Call button to alert master station(s)
 - Weather & Vandal resistant
 - For indoor or outdoor use
 - Stainless steel
 - Flush mount
 - Connects using CAT 5e/6 cable
- 10-7/16" H x 5-13/16" W x 1-3/8" D



IS-SS

Audio only Door Station

- Dry contact for door release
 - Call button to alert master station(s)
 - Weather & Vandal resistant
 - For indoor or outdoor use
 - Stainless steel
 - Flush mount
 - Connects using CAT 5e/6 cable
- 10-7/16" H x 5-13/16" W x 1-3/8" D



IS-RS

Audio only Room Sub Station

- Dry contact
 - Handset for privacy or hands-free VOX communication
 - 8Ω output to speaker
 - Call button to alert master station(s)
 - For indoor use only
 - Wall mount
 - Connects using CAT 5e/6 cable
- 7-7/8" H x 4-3/8" W x 2-3/16" D

MASTER
160

Master Station - up to 160 units



IS-MV

Master Station

- 3.5" LCD color monitor
 - Handset for privacy or hands-free VOX communication
 - Door release button
 - PTZ & brightness control
 - 6 speed dial buttons
 - Wall or desk mount (stand included)
 - Connects using CAT 5e/6 cable
- 7-1/2" H x 9-7/8" W x 2-3/8" D

ROOM
960

Room Stations - up to 960 units



IS-RS

Audio only Room Sub Station

- Dry contact
 - Handset for privacy or hands-free VOX communication
 - Call button to alert master station(s)
 - For indoor use only
 - Wall mount
 - Connects using CAT 5e/6 cable
- 7-7/8" H x 4-3/8" W x 2-3/16" D



IS-SS

Audio only Door/Sub Station

- Dry contact for door release
 - Call button to alert master station(s)
 - Weather & Vandal resistant
 - For indoor or outdoor use
 - Stainless steel
 - Flush mount
 - Connects using CAT 5e/6 cable
- 10-7/16" H x 5-13/16" W x 1-3/8" D

Expandable to 32 Systems for a total of 1,024 IP addressable devices.

Contact your local sales representative or Aiphone Tech Support for complete system details.

IP ADDRESS
32

IP Stations - up to 32 Units*



IS-IPDV

IP Addressable Video Door Station

- Dry contact for door release
- Digital PanTilt & Zoom color video camera
- 170° viewing area
- Call button to alert master station(s)
- Weather & Vandal resistant
- For indoor or outdoor use
- Zinc die cast case
- Surface mount
- Connects using CAT 5e/6 cable
- Uses PoE (802.3af) or 24V DC power supply (PS-2420UL)

8-1/2" H x 4-3/16" W x 1-1/8" D



IS-IPDVF

IP Addressable Video Door Station

- Dry contact for door release
- Digital PanTilt & Zoom color video camera
- 170° viewing area
- Call button to alert master station(s)
- Weather & Vandal resistant
- For indoor or outdoor use
- Stainless steel
- Flush mount
- Connects using CAT 5e/6 cable
- Uses PoE (802.3af) or 24V DC power supply (PS-2420UL)

10-7/16" H x 5-15/16" W x 1-5/8" D



IS-IPMV

IP Addressable Master Station

- 3.5" LCD color monitor
- Handset for privacy or hands-free VOX communication
- Door release button
- PTZ & brightness control
- 6 Speed dial buttons
- Wall or desk mount (stand included)
- Connects using CAT 5e/6 cable
- Uses PoE (802.3af) or 24V DC power supply (PS-2420UL)

7-1/2" H x 9-7/8" W x 2-3/8" D



IS-SOFT

IP Addressable PC Master Station

- Virtual master station with intuitive graphical interface
- Same user features as IS-MV/IPMV, including door release, PTZ, brightness control, and speed dial
- Records video to computer or NVR
- Compatible with Windows® XP, Windows® Vista, or Windows® 7

Control Units



IS-CCU

Central Control Unit

- 4 Door/Sub Stations (IS-DV, IS-DVF, IS-SS, IS-RS)
- 4 Master Stations (IS-MV)
- 2 IS-SCU's
- 4 IS-RCU's
- Up to 8 total IS-CCU's per system
- Rack mountable (2U required)
- Browser based set up program
- Uses 48V DC power supply (IS-PU-UL)

3-3/8" H x 18-15/16" W x 11-1/4" D



IS-SCU

Add-on Control Unit

- 8 Door/Sub Stations (IS-DV, IS-DVF, IS-SS, IS-RS)
- 8 Master Stations (IS-MV)
- Up to 2 total IS-SCU's per IS-CCU
- Rack mountable (2U required)
- Uses 48V DC power supply (IS-PU-UL)

3-3/8" H x 18-15/16" W x 11-1/4" D



IS-RCU

Room Station Control Unit

- 30 Room/Door Sub Stations (IS-RS/IS-SS)
- Up to 4 total IS-RCU's per IS-CCU
- Rack mountable (2U required)
- Uses 48V DC power supply (IS-PU-UL)

3-3/8" H x 18-15/16" W x 11-1/4" D



IS-IPC*

IP Control Unit

- Connects 1 IS-CCU or 1 IS-RCU to a wide area network
- Up to 8 total IS-IPC's per system
- Rack mountable (2U required)
- Uses 48V DC power supply (IS-PU-UL)

3-3/8" H x 18-15/16" W x 11-1/4" D

*1 IS-IPC uses 1 of the 32 IP Addresses in a system

Power Supplies



IS-PU-UL

Power Supply

- 48V DC, 2A
- UL Listed
- Required for every one IS-CCU, IS-SCU, IS-RCU, or IS-IPC



PS-2420UL

Power Supply

- 24V DC, 2A
- UL Listed
- Optional for every one IS-IPDV, IS-IPDVF, or IS-IPMV

System Layout

DOOR/SUB 20 ▶ MASTER 20 ▶ ROOM 120

IS-CCU 4 ▶ 4
Central Control Unit
(Required for System)
• 4 Door/Sub Stations
• 4 Master Stations



power supply

DOOR/SUB 4 Door/Sub Stations
up to 4 units



MASTER 4 Master Stations
up to 4 units

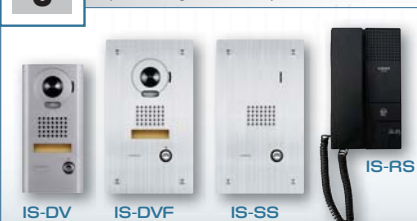


IS-SCU 8 ▶ 8
Add-on Control Unit
(Up to 2 units for each IS-CCU)
• 8 Door/Sub Stations
• 8 Master Stations



power supply

DOOR/SUB 8 Door/Sub Stations
up to any 8 units per IS-SCU



MASTER 8 Master Stations
up to 8 units per IS-SCU



IS-RCU 30
Room Station Control Unit
(Up to 4 units for each IS-CCU)
• 30 Room/Sub Stations



power supply

ROOM 30 Room/Sub Stations
up to any 30 units per IS-RCU



IS-IPC*
IP Control Unit
(Up to 1 unit for each IS-CCU or IS-RCU)
*Counts as 1 of the 32 IP Addresses



power supply
PBX System

LAN / WAN

IP ADDRESS 32 IP ADDRESSES
up to 32 units per system

***Please note:**

- Each IS-IPC counts as 1 of the 32 available IP Addresses
- Maximum 8 IS-IPC's per system

DOOR/SUB 160 ▶ MASTER 160 ▶ ROOM 960

IS-IPC* x 8

Each IS-IPC counts as 1 of the 32 available IP Addresses

Maximum 8 IS-IPC's per system

DOOR/SUB 20 ▶ MASTER 20 ▶ ROOM 120 × 8 =

DOOR/SUB 160 ▶ MASTER 160 ▶ ROOM 960 × 32 =

DOOR/SUB 5,120 ▶ MASTER 5,120 ▶ ROOM 30,720

Total

IS Series Features

Schedule Bells & Announcements

Program daily announcements by day, week, month, or year. Create different schedules for holidays, breaks, or after hours.

Customize Sounds

Pre-record or load up to 15 messages or sound tones.

Forward Failed Calls Automatically

If a master station is not answered, have the call forwarded to another master or an outside phone number, like 911.



Emergency Broadcasts

Create areas and zones to easily broadcast emergency announcements quickly.

Transfer Video Calls

Call-ins from a video door station can be transferred to any standard or PC master station on the network for easy identification.



Browser Based Set-up

Use a simple browser to jump online and set-up, change, or customize the IS Series.

170° viewing angle

The IS Series features a wide angle camera with PanTilt & Zoom function.



Create Unique System Settings

Save system settings, then export and upload them to another system.

IS Series IP Security Intercom

DOOR/SUB 160 MASTER 160 ROOM 960 IP ADDRESS 32
Per System
32 Systems TOTAL Globally

— Hardwired Units —



IS-DV

Wide Angle Digital PanTilt and Zoom Video Door Station, zinc die cast, surface mount



IS-DVF

Wide Angle Digital PanTilt and Zoom Video Door Station, stainless steel, flush mount



IS-SS

Audio only Door/Sub Station, stainless steel, flush mount



IS-MV

Video Master Station



IS-RS

Audio only Room/Sub Station

— Networked Units —



IS-IPDV

IP Addressable Wide Angle Digital PanTilt and Zoom Video Door Station, zinc die cast, surface mount



IS-IPDVF

IP Addressable Wide Angle Digital PanTilt and Zoom Video Door Station, stainless steel, flush mount



IS-IPMV

IP Addressable Video Master Station



IS-SOFT

IP Addressable PC Master Station Software

— Control Units —



IS-CCU

Central Control Unit
Accommodates:
4 Door / Sub Stations,
4 Master Stations,
2 IS-SCU's, 4 IS-RCU's, and 1 IS-IPC



IS-SCU

Add-on Control Unit
Accommodates:
8 Door / Sub Stations and
8 Master Stations



IS-RCU

Room Sub Control Unit
Accommodates:
30 Room / Sub Stations



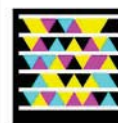
IS-IPC

IP Control Unit
Accommodates:
1 IS-CCU or 1 IS-RCU
(up to 8 IS-IPC's per system)

Specifications

Power Source	IS-CCU, IS-SCU, IS-RCU, IS-IPC: 48V DC - Use IS-PU-UL IS-IPDV, IS-IPDVF, IS-IPMV: 24V DC - Use PS-2420UL or Power Over Ethernet (802.3af)
Network	Interface: 10 BASE-T / 100 BASE-TX Ethernet, Protocol: TCP, UDP, SIP
Bandwidth	320Kbps to 8Mbps
Software	Processor: 2GHz or faster, RAM: minimum 1GB, Storage: 10MB or more (additional memory required for movie recording), Sound Card: 8-bit full duplex - DirectSound compatible, Display: 1024 x 786 or higher, Runtime: Microsoft® .NET framework 2.0 or later, Network: Wired 100Base-TX recommended Operating System: Windows® XP (SP3), Windows® Vista (SP1), or Windows® 7
Connections	RJ45 (10/100Mbit Ethernet), RS-232 compliant
Calling	Chime, image, and audio approx. 45 sec.
Video Monitor	3-1/2" direct-view TFT color LCD
Min. Illumination	5 Lux at 1' distance
Night Viewing	Up to 1' from camera, with white LED projected
Door Release	Contact rating: 24V AC/DC, 500mA

The information in this brochure is preliminary and subject to change without notice.



For more info on the **IS Series**
scan the mobile tag
with your phone

Get the free mobile app for your phone
<http://gettag.mobi>

Distributed by:



95220 IS Series 2/2011

ISO-14001
Certified



Aiphone Co. Ltd.

ISO 9001:2008
Certified



Aiphone Corp.

Deming
Prize



Aiphone Co. Ltd.

AIPHONE®

1700 130th Ave. NE
Bellevue, WA 98005
Ph: (800) 692-0200
Fax: (425) 455-0071

www.aiphone.com