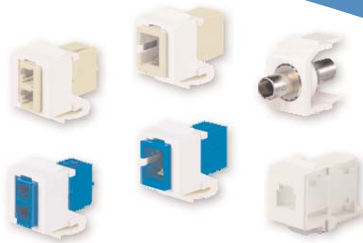


LC, SC, ST and MT-RJ fiber optic adapters have integrated panel retention clips and are TIA/EIA-604 compliant or compatible. Each simplex adapter will connect one connector pair in one module space and each duplex adapter will connect two LC connector pairs in one module space. LC fiber optic adapters and adapter modules include phosphor bronze split sleeves for OM1 or OM2 multimode applications or zirconia ceramic split sleeves for OM3 multimode or singlemode applications.



### technical information

<b>Standard requirements:</b>	All adapters meet or exceed TIA/EIA-568-B.3 requirements LC: TIA/EIA-604 FOCIS-10 compatible; SC: TIA/EIA-604 FOCIS-3 compliant; ST: TIA/EIA-604 FOCIS-2 compatible; MT-RJ: TIA/EIA-604 FOCIS-4 compliant
<b>Split sleeve material:</b>	Zirconia ceramic: 10Gig™ OM3 multimode adapters, OS1/OS2 singlemode adapters Phosphor bronze: OM1 and OM2 multimode adapters
<b>Insertion loss:</b>	Supports the performance of connectors/patch cords
<b>Return loss:</b>	Supports singlemode and multimode connector polish performance

### key features and benefits

<b>Integrated panel retention clips</b>	No metal clips to become bent, damaged or lost; simplex adapter clips automatically adjust for FOCIS-3 or FOCIS-10 panel thickness variations for improved mounting
<b>Short flange design (LC and SC only)</b>	Improved modularity and higher density usage
<b>Choice of phosphor bronze or zirconia ceramic split sleeves</b>	Provides an adapter split sleeve material option to fit specific network requirements
<b>Adapters available in keystone modules</b>	System flexibility; modules are interchangeable with keystone outlets, boxes and patch panels

### applications

- Can be used with keystone telecommunications room products and work area outlets
- Provides a rugged solution for LANs, public networks and fiber-to-the-desk applications

#### NetKey® LC Duplex Fiber Optic Adapter Module

LC duplex adapter with phosphor bronze split sleeve: NKDLCM\*\*

LC duplex adapter with zirconia split sleeve: NKDLCMZ\*\*

#### NetKey® SC Simplex Fiber Optic Adapter Module

SC simplex adapter with phosphor bronze split sleeve: NKSCM\*\*

SC simplex adapter with zirconia split sleeve: NKSCMZ\*\*

#### NetKey® ST Fiber Optic Adapter Modules

ST adapter with phosphor bronze split sleeve: NKSTM\*\*

#### NetKey® MT-RJ Multimode Fiber Optic Adapter Module

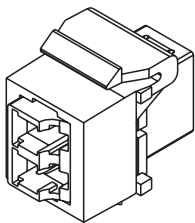
MT-RJ adapter: NKMJMBL

#### NetKey® Module Multimedia Panel – 6 port

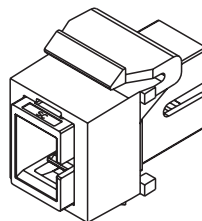
Unloaded panel accepts up to 6 NetKey® Modules: FKP6

\*\* Substitute for module color  
BL = Black  
EI = Electric Ivory  
IG = International Gray  
IW = International White  
WH = White

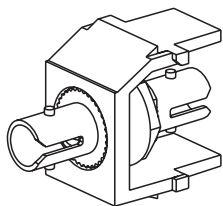
# NetKey® Fiber Optic Adapter Modules



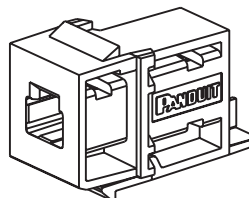
**NKDLCM\*\***  
Shown without dust caps



**NKSCM\*\***  
Shown without dust caps



**NKSTM\*\***



**NKMJM\*\***

**\*\* Substitute for module color**

**BL = Black**

**EI = Electric Ivory**

**IG = International Gray**

**IW = International White**

**WH = White**



## WORLDWIDE SUBSIDIARIES AND SALES OFFICES

PANDUIT CANADA  
Markham, Ontario  
cs-cdn@panduit.com  
Phone: 800.777.3300

PANDUIT EUROPE LTD.  
London, UK  
cs-emea@panduit.com  
Phone: 44.20.8601.7200

PANDUIT SINGAPORE PTE. LTD.  
Republic of Singapore  
cs-ap@panduit.com  
Phone: 65.6305.7575

PANDUIT JAPAN  
Tokyo, Japan  
cs-japan@panduit.com  
Phone: 81.3.6863.6000

PANDUIT LATIN AMERICA  
Jalisco, Mexico  
cs-la@panduit.com  
Phone: 52.33.3777.6000

PANDUIT AUSTRALIA PTY. LTD.  
Victoria, Australia  
cs-aus@panduit.com  
Phone: 61.3.9794.9020

For a copy of Panduit product warranties, log on to [www.panduit.com/warranty](http://www.panduit.com/warranty)

For more information

Visit us at [www.panduit.com](http://www.panduit.com)

Contact Customer Service by email: [cs@panduit.com](mailto:cs@panduit.com)  
or by phone: 800-777-3300 and reference NKDS20

**PANDUIT®**

©2010 Panduit Corp.  
ALL RIGHTS RESERVED.

WW-NKDS20

2/2010