

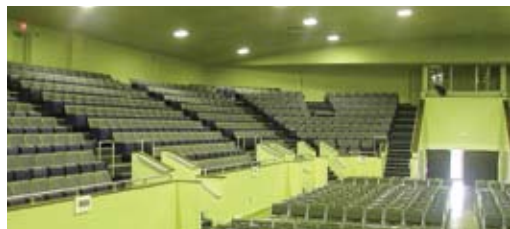


**LEVITON**  
Commercial / Industrial

# lev-lok<sup>®</sup>

## Modular Receptacles

Introducing a revolutionary new line of 15 and 20 amp devices engineered for fast and easy installation



## lev-lok<sup>®</sup>

Modular Receptacle System



### Simple & Easy to Use, Yet Provides Secure Connections

Leviton's latest receptacle family is a revolutionary design called the Lev-Lok™ Modular Receptacle System. It consists of a wiring module (locking connector with leads) and a rugged duplex receptacle with solid brass locking connection pins. Place the wiring module over the receptacle's locking pins, twist clockwise and the connection is secured.

Leviton's modular devices address the reliability and performance concerns of specification engineers without sacrificing the contractor's need for fast, easy installation.

- Receptacles constructed with impact-resistant thermoplastic nylon cover and body
- Four corner latches securely fasten the receptacle's face to the body
- Industrial grade receptacle features single-piece, brass wrap-around mounting strap, with integral ground contacts, for continuous conductivity and secure ground path
- Solid brass locking pins for strong, secure connection between receptacle & wiring module
- Backed by a Limited 10-Year Warranty
- Wiring module locks & latches to the receptacle
- Wiring Module ships with protective cover preventing debris from entering contacts until receptacle is attached
- Wiring module includes factory-installed circuit ID label. Electricians can save a step by labeling device locations during rough-in
- Receptacles offered in commercial, industrial and hospital grades; in both conventional and tamper-resistant configurations

# Commercial Grade Modular Devices 15 & 20 Amp Duplex

SmartLockPRO® GFCI Straight Blade Receptacles 2-Pole, 3-Wire Grounding

**Cat. Nos.**

M7599, MT759, M7899, MT789, MSTWL-A

**Application**

In accordance with the NEC, these devices are suitable for use in all 15 or 20 ampere branch circuits of 125 Volts in commercial and institutional installations where UL 943 Class A(GFCI) and UL 498(Receptacle) standards of mechanical and electrical life are specified.



M7599-I with MSTWL-A

**MATERIALS**

Component	Material
Cover	Nylon
Base	Polycarbonate
Mounting Strap	Galvanized Steel with riveted ground contact
Ground Clip	Brass
Line Contacts	0.031" Thick Brass, Double Wipe (15A) or Triple Wipe (20A)
Locking Pins	Solid Brass
Mounting Screws	Triple Combination Head, Steel
Shutter Mechanism ("MT" versions)	Delrin® Acetal
Certifications and Code Compliance	NEMA WD-1&6, ANSI C-73, UL 943 Class A(GFCI) , UL 498 (Receptacle), CSA C22.2 No. 42, NOM 057
Wiring Module	Material
Wire Leads	6", #12 AWG THHN 1 Hot Lead (Black), 1 Neutral Lead (White), 1 Ground Lead (Green)
Contacts	Brass
Housing	Polycarbonate

**ORDERING INFORMATION**

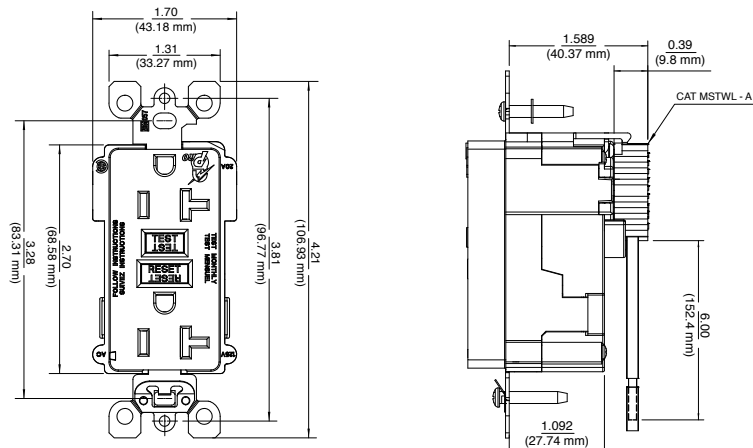
Description	Color	15A 125V, NEMA 5-15R		20A 125V, NEMA 5-20R	
		Standard	Tamper- Resistant	Standard	Tamper- Resistant
Duplex Receptacles	Brown	M7599	MT759	M7899	MT789
	Ivory	M7599-I	MT759-I	M7899-I	MT789-I
	White	M7599-W	MT759-W	M7899-W	MT789-W
	Black	M7599-E	MT759-E	M7899-E	MT789-E
	Gray	M7599-GY	MT759-GY	M7899-GY	MT789-GY
	Red	M7599-R	MT759-R	M7899-R	MT789-R
	Light Almond	M7599-T	MT759-T	M7899-T	MT789-T
Description		Cat. No.			
Wiring Module – Right Angle, Stranded Wire Leads		MSTWL-A			
Wiring Module – Right Angle, Solid Wire Leads		MSTWL-SDA			



M7899 20Amp-125 Volts

Dimensions apply to Cat. Nos.

M7599, MT759, M7899, MT789 & MSTWL-A



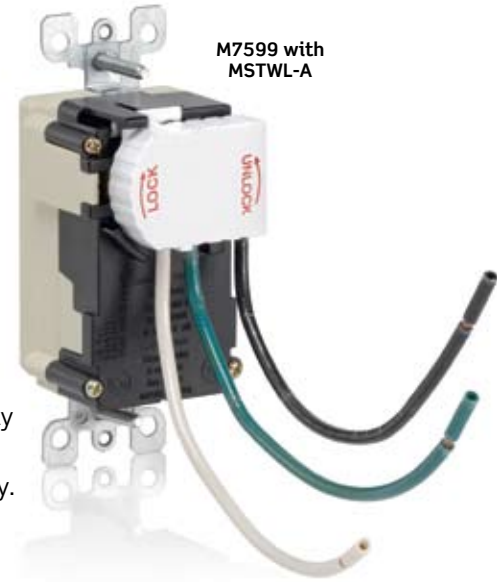
lev-lok® M7599, MT759, M7899, MT789, MSTWL-A

**SPECIFICATIONS**

Straight Blade 15 and 20 Amp 2-pole, 3-wire grounding GFCI duplex modular receptacles with lockout and end-of-life indication shall be Leviton Underwriters Laboratories Listed UL 943 Class A(GFCI) and UL 498(Receptacle) and CSA Certified with galvanized strap, locking pin and latch wiring assembly. Ratings and colors as scheduled on plan.

**FEATURES AND BENEFITS**

- GFCI protects one duplex receptacle. No feed-through capability.
- Constructed with impact-resistant nylon cover
- Large triple-wipe, brass “T” line contacts on 20A for superior contact and conductivity
- The SmartLockPRO receptacle automatically tests the GFCI every time the RESET button is pushed. The GFCI will not reset if the GFCI circuit is not functioning properly.
- Built-in end-of-life indication. If the SmartLockPRO receptacle can no longer provide GFCI protection, it will not reset and no power is supplied to the face.
- Trip threshold meets or exceeds UL requirements for tripping time.
- Right Angle Wiring module's thin profile makes it easier to place GFCI receptacle in the box.
- #12 AWG THHN wire leads, 6” length on MSTWL series wiring modules
- Wiring module locks and latches to the receptacle body providing double the connection security
- Receptacle to be installed only with Leviton MSTWL series wiring modules
- MSTWL wiring module shipped separately with protective label and factory-installed Circuit ID label



M7599 with MSTWL-A

**2 YEAR LIMITED WARRANTY**

**PERFORMANCE SPECIFICATIONS**

<b>Electrical</b>	
Dielectric Voltage Withstand:	1500V minimum per UL 498
Working Voltage:	125V as rated
Current Interrupting:	2kA
Trip Level	5 mA plus or minus 1 mA
Temperature rise:	Maximum 30°C temperature rise at full-rated current after 150 cycles of overload at 150% of rated current
<b>Mechanical</b>	
Lead Identification:	Leads identified in accordance with UL 498 (black, white & green)
Product Identification:	Ratings are permanently marked on device
<b>Environmental</b>	
Flammability:	Rated V-2 per UL 94
Operating Temperature:	From -35°C to 65°C (-31°F to 149°F)
<b>Testing and Code Compliance</b>	
The receptacles listed herein comply with UL 498 Listing (UL file # E13399), CSA C22.2 No. 42 Certification and meet Mexican NOM standards. They meet or exceed NEMA WD 1 and 6, and ANSI standard C-73. These receptacles are suitable for use in accordance with federal, state, county, municipal and local codes.	



**Leviton Manufacturing Co., Inc.**

201 North Service Road, Melville, NY 11747 Tech Line: 1-800-824-3005 Fax: 1-800-832-9538 www.leviton.com  
 © 2009 Leviton Manufacturing Co., Inc. All rights reserved. Subject to change without notice.

