



OptiView® Series III

Portable Wired/Wireless Network Analyzer

Part of the OptiView Management Suite (OMS)

OMS provides the breadth of visibility and depth of analysis for a complete picture of network and application performance. It's the only solution that combines proactive monitoring with in-depth "on-the-wire" analysis and portability to see problems up close – anywhere on the network.

By combining best of breed solutions for monitoring, analysis and troubleshooting, OMS can be used as a holistic management suite or part of your IT organization's tool-set, to help reduce complexity and improve productivity in your team's daily workflow.

OptiView Portable Analyzer

as part of the OMS, the portable OptiView Network Analyzer provides wired or wireless analysis anywhere in the network, allowing the user to monitor and capture the end-user experience "on-the-wire". It is a portable network management tool designed to help network professionals in their daily tasks:

- Troubleshoot network and application performance problems
- Ensure network uptime and infrastructure availability
- Manage daily operations
- Ensure compliance with regulations and standards
- Provide management with accurate reporting and documentation

The OptiView Network Analyzer is like having a "virtual network engineer" with its advanced network analysis features, built-in expert advice and all-in-one capability for troubleshooting, monitoring, trending and alerting – you can manage the core, remote sites or critical network points with a single tool.

OptiView Series III new release features:

- 10 Gigabit Interface Monitoring – More IT organizations are deploying 10G in data centers - now OptiView gives you visibility into those critical links.
- More Powerful Discovery – More efficient SNMP queries speeds discovery times, while separate in/out full-duplex multi-port statistics for all interfaces provides better understanding of traffic flows.
- Integrated NetAlly Agent – Used in conjunction with the optional NetAlly Test Center software, this enables the OptiView to be an



agent end-point when conducting NetAlly application analysis or VoIP assessments.

- AirMagnet – OptiView's optional wireless analysis now features the award-winning AirMagnet Wi-Fi Analyzer.

Troubleshoot network and application performance problems – fast.

When problems happen, your job is to fix it – fast – and perform deeper analysis for determining the root cause. The OptiView Network Analyzer helps you resolve network performance issues in real-time using vendor-independent infrastructure analysis, on-the-wire traffic analysis, and full-line rate packet capture/decode. Expert-assisted protocol analysis provides guidance – not just data – to solve tough problems, even if you're not a packet decode geek.

Ensure network uptime and infrastructure availability

Optimize network equipment to minimize outages and degradations. Eliminate unwanted applications and enforce traffic and bandwidth policies through deep traffic analysis. Validate VLAN configurations and network health; audit switch/router configurations and performance. Conduct response time analysis of key business applications from source to end-user perspective.

Manage daily operations

Reduce time on projects and network changes. Assess, verify and prove network readiness for new applications, new technologies and infrastructure deployment. Conduct network discovery, traffic analysis, infrastructure device analysis and documentation. Deploy, secure and troubleshoot wireless LANs.

Ensure compliance with regulations and standards

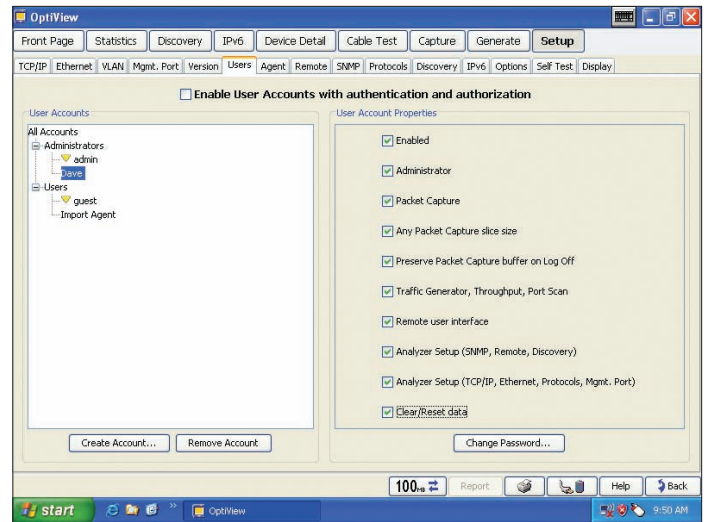
Maintain network integrity by discovering unauthorized devices and misuse of network equipment. Perform routine audits to identify regulatory compliance violations (HIPAA, PCI, SOX). Verify 802.1x configurations, SNMP community strings and MAC level port security.

Provide management with accurate reporting and documentation

Save huge amounts of time and keep documentation up-to-date with OptiView's automated reporting function. When used with OptiView Reporter, generate inventory and daily performance reports, and with Visio, automatically create network maps.

Remote user interface

Simply point a web browser at the IP address of a correctly configured OptiView Series III Portable Network Analyzer to retrieve saved reports and capture files. You can also install a Remote User Interface (UI) and use your PC to obtain remote access to an analyzer over a TCP/IP connection. Once the Remote UI is installed, simply give the interface the IP address of the analyzer to monitor and see an almost identical interface to the analyzer's local interface. Communications between the analyzer and Remote UI can also be encrypted. A single portable analyzer will support seven remote sessions for collaborative troubleshooting or opening of multiple sessions on a PC to provide a remote dashboard view. Additionally, use the analyzers management port to configure and monitor for out of band management independently of the network under test port.



User accounts

User accounts

Through the user accounts screen, you can add and modify analyzer security information for each individual analyzer user, which prevents unauthorized use of certain analyzer features for easier compliance with regulatory requirements. Features that can be disabled include packet capture and decode, traffic generation, remote user interface and analyzer configuration.

Context sensitive help

Help is contextually linked to each screen in the analyzer. While that help screen is displayed, you may select other information from the table of contents, choose an index entry, or perform a full text search on any help topic or term.

Portable Network Analyzer removable hard drive option for classified environments

See what's happening on your classified network by simply connecting one single tool that ensures any sensitive data stored on your network analyzer's hard drive never leaves that environment.

Fluke Networks OptiView Series III Portable Network Analyzer with removable hard disk drive is a new approach to classified environment network analysis that provides you with the Network SuperVision you need for all seven layers, along with the speed and simplicity your organization demands. Network information discovered by the OptiView Series III Portable Network Analyzer can be stored on the removable hard drive which allows the analyzer to be moved from classified environments of different levels and between classified and unclassified systems by simply replacing the hard drive.



Optional removable hard drive

AirMagnet WiFi Analyzer Option

Fluke Networks gives you the visibility you need to manage both your 802.11 a/b/g/n wireless and 10/100/1000 Ethernet copper and fiber wired networks. By extending the award-winning OptiView Portable Network Analyzer with Wi-Fi detection, verification and troubleshooting, Fluke Networks again ensures that OptiView is the network visibility tool of choice.

With the WiFi analyzer option, get total visibility into your network. It's a solution that brings value to key wireless network tasks such as:

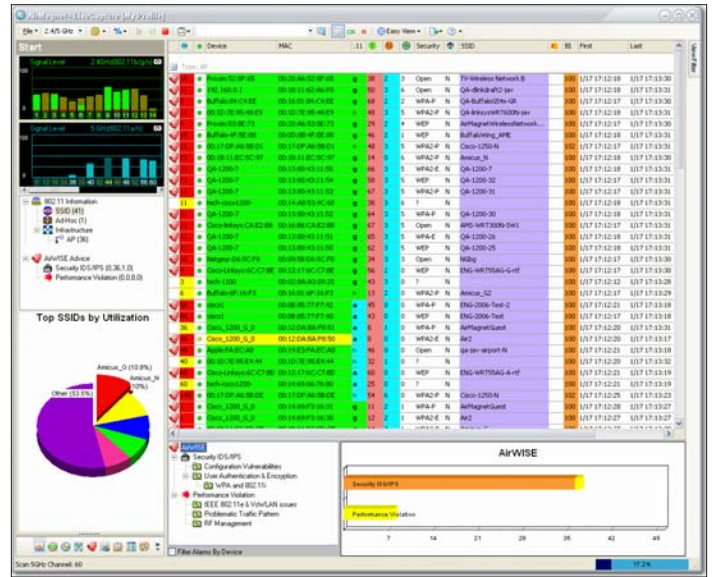
- Discovery of wireless access points and clients.
- Detection and location of rogue APs.
- Active client based connectivity testing.
- Channel monitoring.
- Packet capture and decode for complete analysis of 802.11 a/b/g/n WLAN's.

In addition, load Fluke Networks' powerful wireless stand-alone software on the analyzer such as AirMagnet Survey Software for site survey analysis to quickly optimize coverage and performance, or AirMagnet Spectrum Analyzer to detect, identify and locate RF emitting devices that interfere with 802.11 and cause intermittent performance problems.

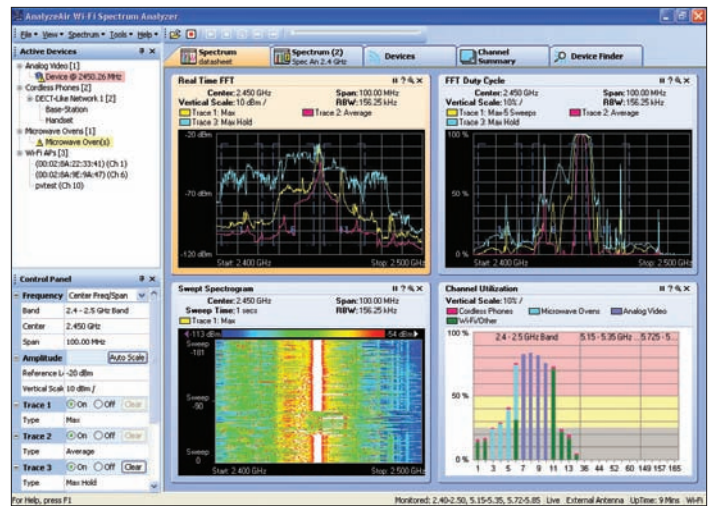
AnalyzeAir Wi-Fi Spectrum Analyzer

AnalyzeAir Wi-Fi Spectrum Analyzer software runs on the OptiView platform and provides IT network professionals the vision they need into the hidden world of RF, providing them the ability to see the spectrum in a visible and intelligible format. AnalyzeAir lets you see, monitor, analyze, and manage all the RF sources and wireless devices that influence your Wi-Fi network's performance and security, even if those devices are unauthorized or transient. Unlike singlefunction RF analyzers or expensive tools that provide RF information without device identification and location, AnalyzeAir provides an easy-to-understand, fast-start solution allowing users to quickly resolve RF problems that prevent WLAN connectivity and impact performance.

For additional information, see the detailed AnalyzeAir Wi-Fi Spectrum Analyzer datasheet.



AirMagnet Wi-Fi Analyzer



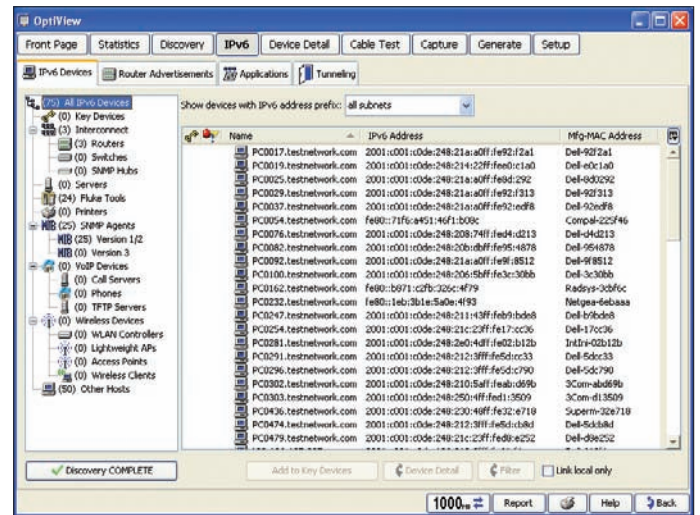
AnalyzeAir Overview

OptiView® IPv6 Analysis Option

The analyzer will discover and display complete IPv6 network and device inventory including routers, switches, wireless AP's, DHCP6 servers and hosts. It enables you to identify active IPv6 devices in the network and those that may have problems in single-stack IPv6 networks. Router Advertisements are analyzed and the analyzer displays information gathered from routers (by subnet) such as the router name, auto configuration, MTU, preferred lifetime, valid lifetime, network name, subnet, local prefix, on link, and user-defined name.

Easily identify applications that may be communicating using both IPv4 and IPv6 protocols. In a dual stack network, IPv4 and IPv6 can be running at the same time but if the network becomes pure IPv6, the application may not continue to run.

Detect devices using tunneling mechanisms and identify the tunnels in use. Undetected or unauthorized tunneling could represent a serious security risk.



IPv6 Devices

OptiView® Fiber Inspector Option

Dirt, dust and other contaminants are the enemy of high-speed data transmission over optical fiber. With today's network applications requiring more bandwidth and loss budgets being tighter than ever before, it is imperative that all optical connections are clean and free of contaminants to ensure network operation. Fluke Networks' OptiView Series III Portable Network Analyzer, together with the OptiView Fiber Inspector Option, is the solution.

The OptiView Fiber Inspector Option, a portable video microscope that connects to a USB port on an OptiView Series III Portable Network Analyzer, gives you superior vision by enabling you to inspect all types of installed fiber terminations in hardware devices and patch panels. It saves you time by eliminating the need to access the rear of patch panels or disassemble hardware devices prior to inspection. Instead of removing each individual fiber, you need only insert the video probe to inspect the fiber while it's still in place.

The OptiView Fiber Inspector:

- Easily inspects fiber connectors already installed on patch panels.
- Quickly determines whether fiber connectors on a hardware device are clean and in good condition – without disassembling the device!
- Eliminates the hazards of inspecting live fiber.
- Is compatible with standard ST, SC, and FC connectors, and other connector types including small form factor connectors with optional adapter tips.
- Leverages the investment already made in the OptiView Series III Portable Network Analyzer by eliminating the need for a separate display.





Product Suites - more solutions, more value

The OptiView Management Suites turn the OptiView Series III Network Analyzers into a complete solution of visionary network management products that work with the Portable Network Analyzer to monitor, analyze and troubleshoot, giving you control of every situation and making your daily network management tasks more efficient. You get enterprise-wide vision with the power to drill down seven layers deep.

You can identify problems through the application layer with the application-centric ClearSight Analyzer™. It can analyze capture files from the OptiView analyzer for full seven-layer decodes with expert analysis. Advanced filtering and triggering let you find offending packets. And, OptiView™ Reporter software together with your hardware agents allows trending of user defined ports in your switched network. Or, set it up to collect data from your analyzer. With a single click, you can generate network connection diagrams with our unique link to Microsoft® Office Visio® software. And if a key device, router, or switch port is overloaded, you'll know about it in a heartbeat.

Our Network SuperVision Gold Support

plans give you exclusive services and 24/7 technical assistance. Sign up for our Gold Support plan and you'll enjoy outstanding privileges to protect and add value to your investment in Fluke Networks equipment. They include unlimited technical assistance seven days a week, 24 hours a day via phone or at our web site support center. Repairs on covered items and "next day" dispatched loaner units for uninterrupted service. Free software upgrades. Scheduled annual performance verification service. Web based training. Access to our extensive Knowledge Base library of operation and application related technical articles. And Gold "Members Only" special prices and promotions. Some benefits are not available in all countries.

See www.flukenetworks.com/goldsupport for more information.

Specifications

General Specifications	
Weight	Without external battery 2.2 kilograms (5.0 lbs); With external battery 3.0 kilograms (6.6 lbs)
Dimensions	26.0 x 23.4 x 6.4 centimeters (10.3 x 9.2 x 2.5 inches)
Display	LCD touch screen, 800 x 600 pixels, active color panel, CCFT back-light and bezel, touch pad
LED Indicators	16 (21 with external battery)
Power	
Battery	Internal battery Lithium Ion 11.1 V DC (nominal), 2 Ah; External battery Lithium Ion 11.1 V DC (nominal), 6 Ah
AC	External AC adapter/battery charger AC input: 120 V – 240 V, 50/60 Hz, 1.5 A DC output: 15 V, 4.0 A
Ports	
Communication and accessory ports	3 USB, 1 PC Card type II, 1 VGA out 15-pin connector
Network analysis ports	RJ-45 10/100/1000BASE-T Ethernet, fiber 100/1000BASE-X SFP GBIC
Management port	10/100/1000BASE-T (RJ-45) Ethernet
Network Standards	
LAN Interfaces	IEEE 10BASE-T, IEEE 100BASE-TX, IEEE 100BASE-FX, IEEE 1000BASE-X
Standard SNMP MIBs Used	RFCs: 1213, 1231, 1239, 1285, 1493, 1512, 1513, 1643, 1757, 2021, 2108, 2115, 2127, 2495, 2515, 2558
Media	
Cable Types	Unshielded Twisted Pair LAN cables (100 and 120 Ohm UTP category 3, 4, 5, 5E, and 6 ISO/IEC Class C and D); Foil-screened Twisted Pair cables (100 and 120 Ohm ScTP category 3, 4, 5, and 6 ISO/IEC Class C and D)
Cable Length 1	1 to 153 m (3 ft to 500 ft) +/- 2 m (6 ft)
Environmental and Safety	
Operating Temperature	10°C to 30°C (50°F to 86°F) with up to 95% Relative Humidity 10°C to 40°C (50°F to 104°F) with up to 75% Relative Humidity
Non-Operating Temperature	-40°C to +71°C (-40°F to +159.8°F)
Approvals	
Shock and vibration	Meets requirements of MIL-PRF-28800F for Class 3 equipment
Laser	Class 1 Laser Product, complies with 21 CFR 1040.10 & 1040.11, CFR(J), and EN60825-1:1994/A1:1997/A2:2002
Safety	Complies with CAN/CSA-C22.2 NO. 60950-1 Canadian Standards, and UL 60950-1 (U.S. standards) (CE) Complies with EN60950



Models, Options and Accessories

OptiView Portable Analyzer Models	
Model Number/Name	Description
OPVS3-GIG	OptiView Series III Portable Network Analyzer Pro Gigabit. All OPVS3 mainframes include: VLAN, ITO, and WAN options
OPVS3-GIG/W	OptiView Series III Portable Network Analyzer Pro Gigabit Includes OPVS3-WFA OptiView AirMagnet WiFi Analysis Option 802.11 a/b/g/n
OPVS3-GIG/S	OptiView Series III Portable Network Analyzer Pro Gigabit with OPVS2-EXPT OptiView Expert Analysis Option, OPVS2-VOIP Voice Over IP and OPVS3-WFA OptiView AirMagnet WiFi Analysis Option 802.11 a/b/g/n
OPVS3-GIG/RHD	OptiView Series III Portable Network Analyzer Pro Gigabit with Removable Hard Drive and OPVS3-IPV6 analysis option
Options	
Model Number/Name	Description
OPVS3-IPV6	OptiView IPv6 Analysis Option
OPV-RPTR/PRO	OptiView Reporter Pro (40 Devices)
OPV-RPTR	OptiView Reporter (1 Device)
OPVS3-WFA	OptiView AirMagnet WiFi Analysis Option 802.11 a/b/g/n
OPVS3-WSP	OptiView AirMagnet Survey PRO & Planner Suite (Replaces InterpretAir)
OPVS3-WSPI	OptiView Wireless Suite: includes AirMagnet Survey PRO, AirMagnet Planner Module, and AnalyzeAir Wi-Fi Spectrum Analyzer (Replaces IA-AA)
OPVS3-WL	OptiView WLAN Suite: includes AirMagnet Survey PRO, AirMagnet Planner Module, AnalyzeAir Wi-Fi Spectrum Analyzer, and OptiView 802.11 a/b/g/n Wireless Network Analysis Option (Replaces OPVS3-WLESS)
Accessories	
Model Number/Name	Description
OPVS2-BP	External Battery Pack
OPVS2-KB	Mini USB keyboard
OPV-FT600	OptiView Fiber Inspector
OPV-HCASE	Hard Carrying Case for all OptiView Integrated Network Analyzer Models
OPVS3-RHD	Removable Hard Drive for OPVS3-GIG/RHD
OPVS3-RHD/4	Pack of four Removable Hard Drives for OPVS3-GIG/RHD
LRPRO-REFLECT	LinkRunner™ Pro Reflector
OPV-SFP-SX	850 nm, 50 and 62.5 micron multi mode fiber 1000BASE-SX SFP adapter for OptiView Series III Portable Network Analyzer
OPV-SFP-LX	1300 nm, 10 micron single mode fiber 1000BASE-LX SFP adapter for OptiView Series III Portable Network Analyzer
OPV-SFP-ZX	1510 nm fiber 1000BASE-ZX SFP adapter for OptiView Series III Portable Network Analyzer
OPV-SFP-100FX	100BASE-FX SFP adapter
NFC-Kit-Case	Fiber Optic Cleaning Kit
Support	
Model Number/Name	Description
GLD-OPVS3	Gold Support Services, OptiView Series 3
GLD-AM-WFA	Gold Support Services, 1 year software support for AirMagnet WiFi Analyzer on OptiView Portable Analyzer
GLD-AM-WSP	Gold Support Services 1 yr OPV AM Survey PRO & Planner Suite (Replaces GLD-InterpretAir)