

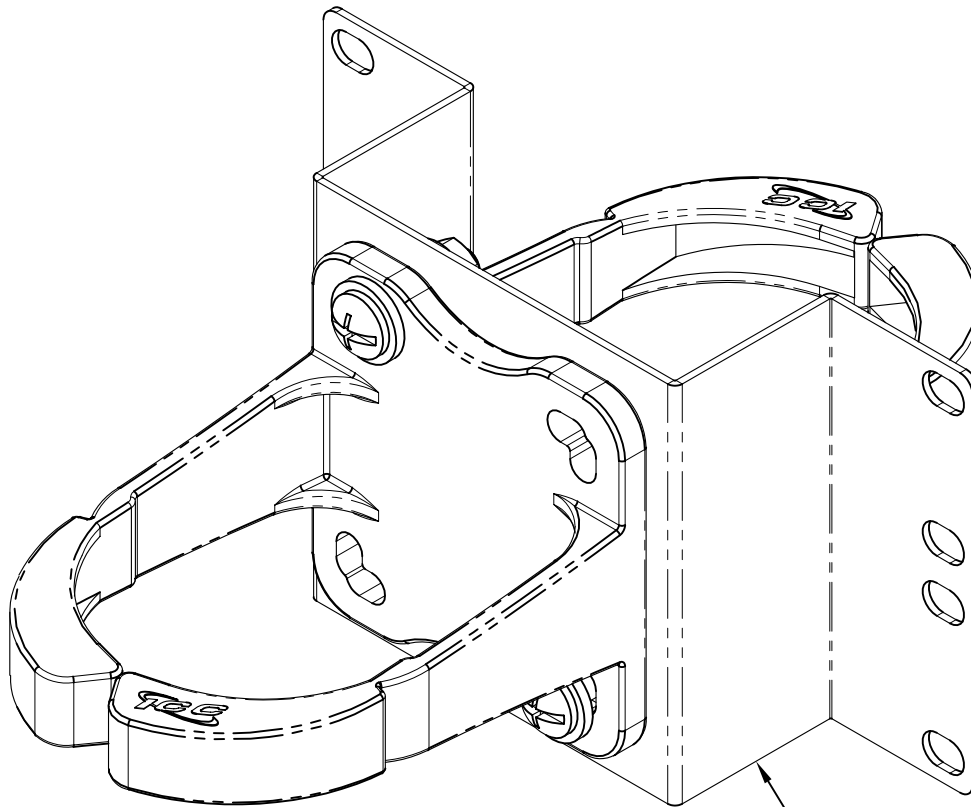
3.00" Double Vertical Cable Management Ring

PRODUCT SPECIFICATION



Package includes:

- A. 3.00" Double Vertical Cable Management Ring, 1 pc
- B. #12-24 x 5/8" Pan Head, Pilot Point Machine Screw, 4 pcs



3.00" Double Vertical Cable Management Ring

Features and Benefits:

- Provides flexibility for front and back cable management with a neat and clean appearance
- Suitable for all racks, wall mount racks, and wall mount brackets
- Fits on the sides of individual racks/brackets but can also be used to join two distribution racks
- Used with ICCMS distribution racks and ICCMSWMR wall mount racks

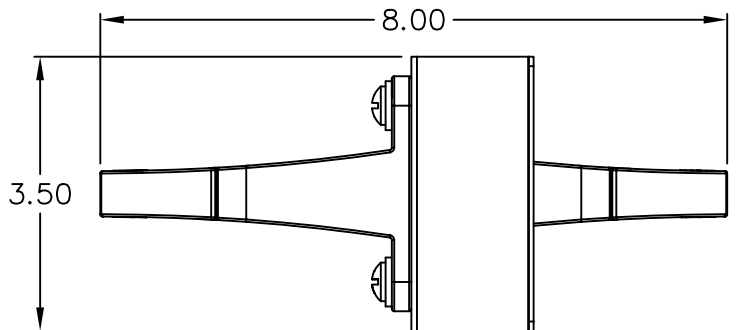
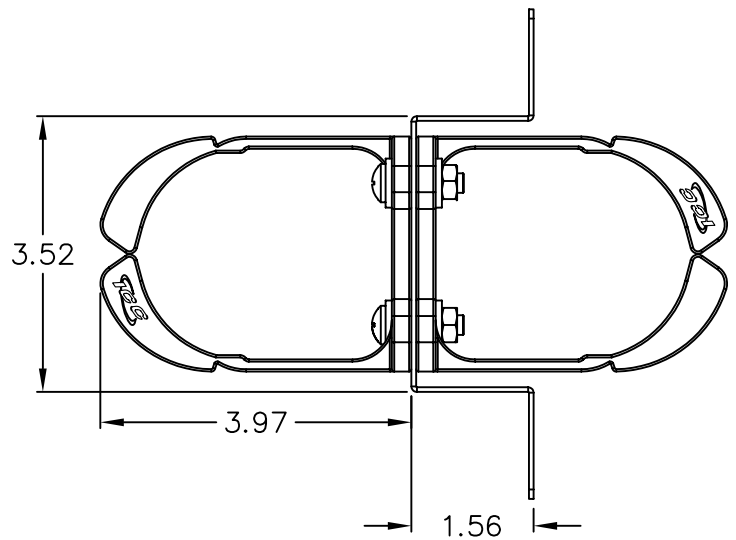
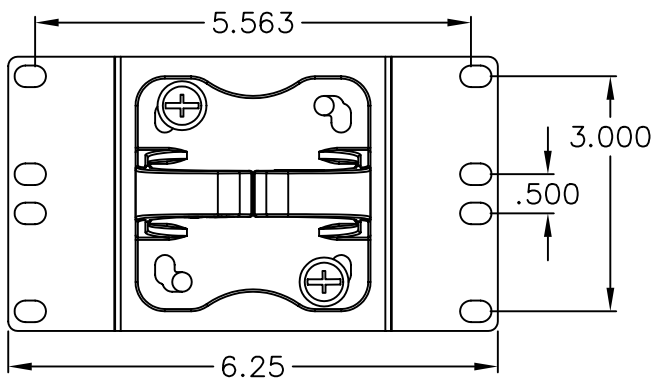
RING, VERTICAL CABLE MGMT, DOUBLE, 3.00"

| | |
|----------|------------|
| ITEM NO. | ICCMSCMPR8 |
| DWG NO. | PSCMSCMPR8 |

| | |
|----------|---|
| REV. | A |
| PAGE NO. | 1 |



CUSTOMER CARE / TECHNICAL SUPPORT * CSR@ICC.COM / 888-ASK-4-ICC (275-4422) * 14700 Alondra Blvd., La Mirada, CA 90638 * www.icc.com



NOTE: UNLESS OTHERWISE SPECIFIED

1. RING:

- A. MATERIAL: HIGH IMPACT ABS, UL 94V-0
- B. COLOR: BLACK

2. BRACKET:

- A. MATERIAL: 16 GA CRS
- B. SURFACE FINISH: BLACK POWDER COAT



RING, VERTICAL CABLE MGMT, DOUBLE, 3.00"

| | | | |
|----------|------------|----------|---|
| ITEM NO. | ICCMSCMPR8 | REV. | A |
| DWG NO. | PSCMSCMPR8 | PAGE NO. | 2 |



CUSTOMER CARE / TECHNICAL SUPPORT * CSR@ICC.COM / 888-ASK-4-ICC (275-4422) * 14700 Alondra Blvd., La Mirada, CA 90638 * www.icc.com