

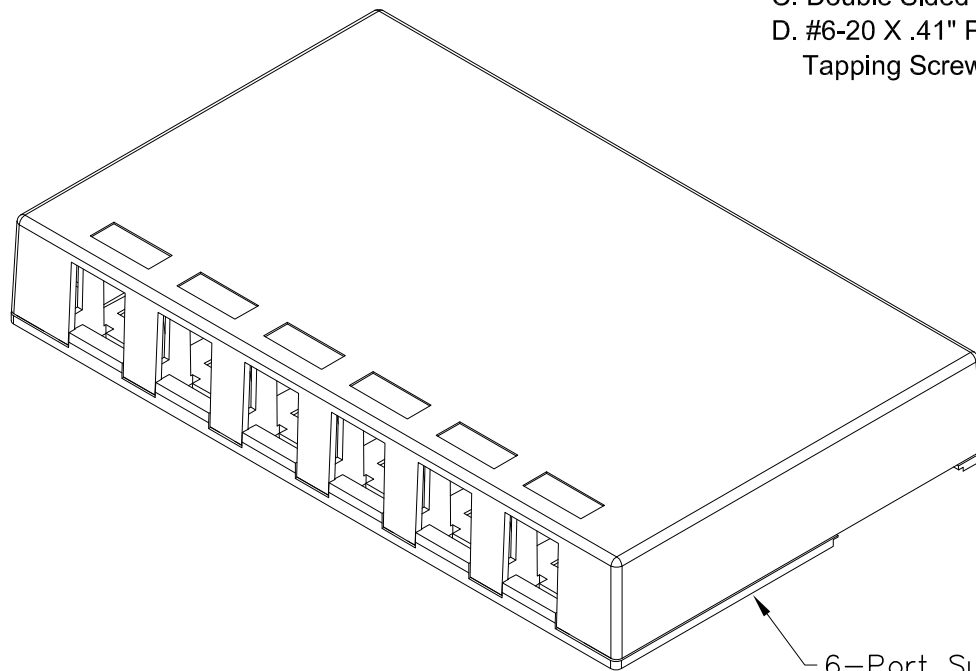
6-Port Surface Mount Box

PRODUCT SPECIFICATION



Package includes:

- A. Surface Mount Box Cover, 1 pc
- B. Surface Mount Box Base, 1 pc
- C. Double Sided Adhesive Strip, 2 pcs
- D. #6-20 X .41" Pan Head, Sharp Point Tapping Screw, 2 pcs



6-Port Surface Mount Box

Features and Benefits:

- Provides a clean modular surface mount outlet solution for voice, data, and other communication needs to the work area for commercial or residential applications.
- Multiple mounting options including adhesive backing and screws.
- Recessed areas for ID labels.
- Rugged and durable construction.
- Accommodates a wide variety of easy to snap-in modules, providing configuration flexibility.
- Compatible with ICRW12XXXX raceway sections.
- Accepts all IC107 modules.
- Available in ivory and white.
- UL listed.

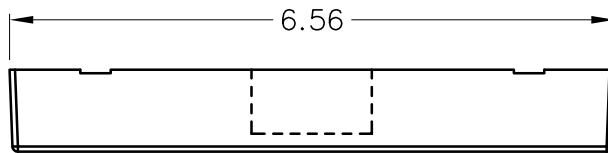
SURFACE MOUNT BOX, 6-PORT

ITEM NO.	IC107SB6XX
DWG NO.	PS107SB600

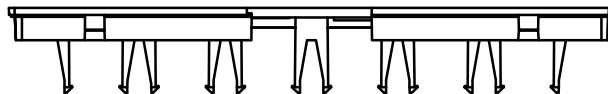
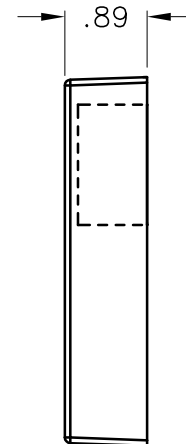
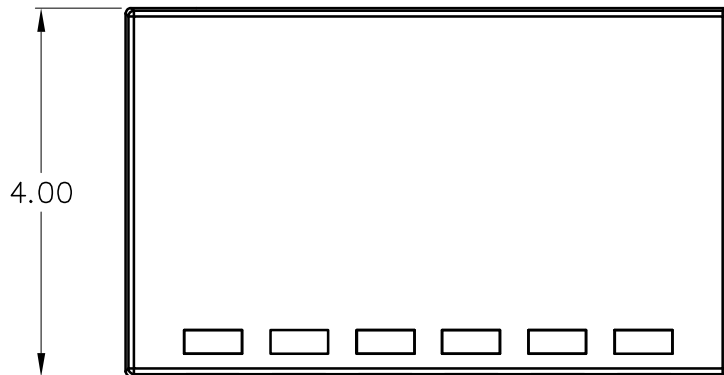
REV.	A
PAGE NO.	1



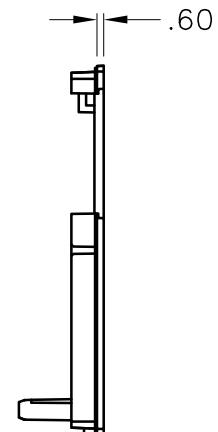
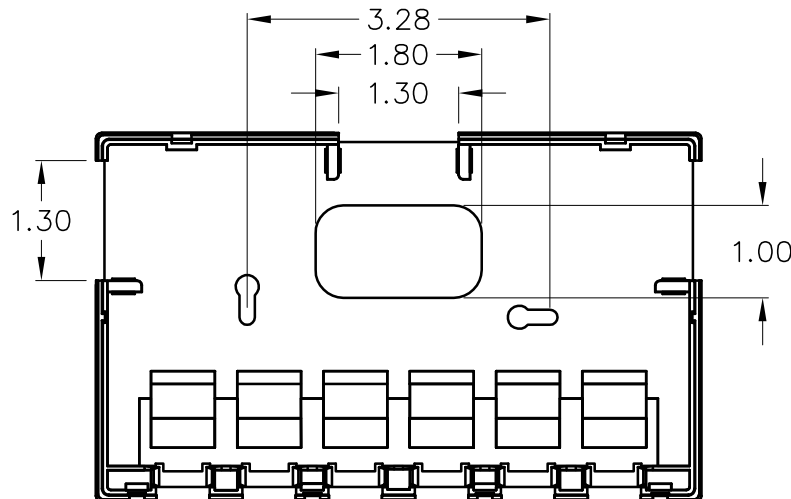
CUSTOMER CARE / TECHNICAL SUPPORT * CSR@ICC.COM / 888-ASK-4-ICC (275-4422) * 14700 Alondra Blvd., La Mirada, CA 90638 * www.icc.com



COVER



BASE



NOTE: UNLESS OTHERWISE SPECIFIED

1. MATERIAL: ABS, UL 94V-0
2. COLOR: XX: IV-IVORY & WH-WHITE

UL US FILE NO. 125268

SURFACE MOUNT BOX, 6-PORT

ITEM NO. IC107SB6XX

REV. A

DWG NO. PS107SB600

PAGE NO. 2

ICC
Premium Products
Proven Performance
Competitive Prices

CUSTOMER CARE / TECHNICAL SUPPORT * CSR@ICC.COM / 888-ASK-4-ICC (275-4422) * 14700 Alondra Blvd., La Mirada, CA 90638 * www.icc.com