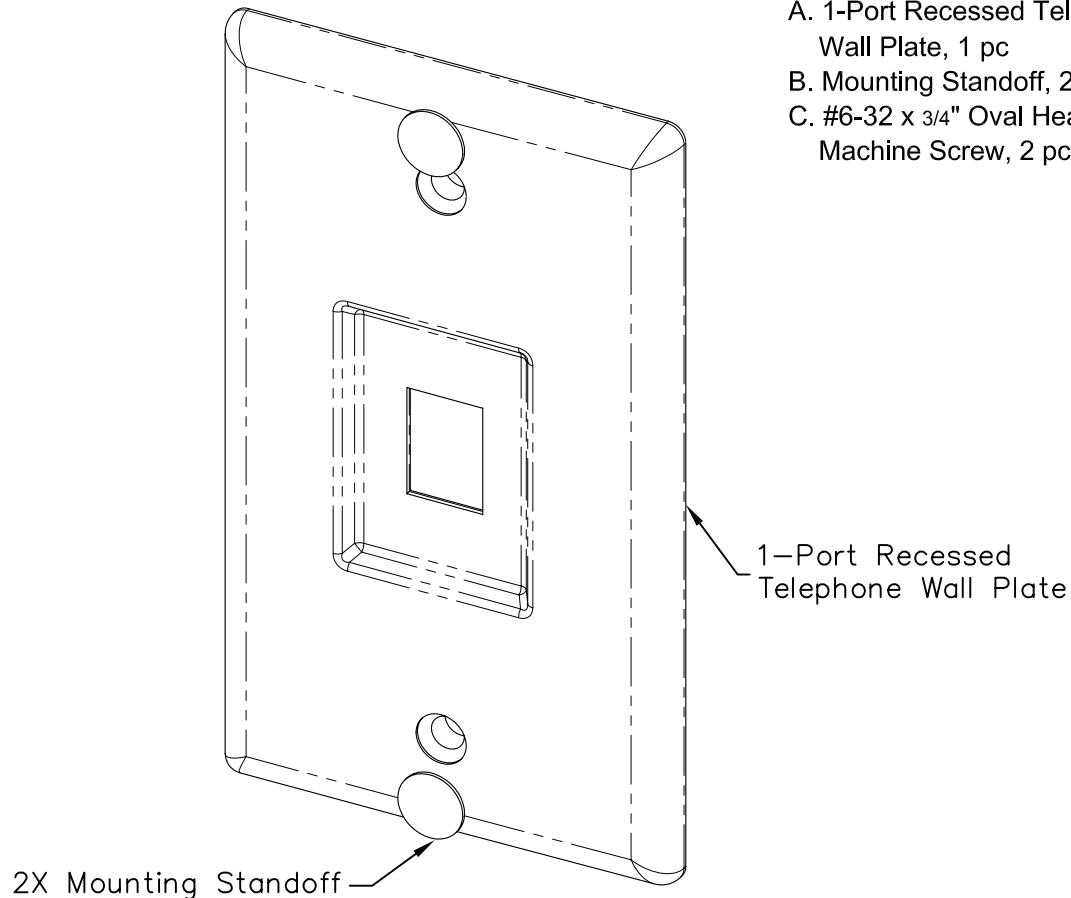


# 1-Port Recessed Telephone Wall Plate

## PRODUCT SPECIFICATION

### Package includes:

- A. 1-Port Recessed Telephone Wall Plate, 1 pc
- B. Mounting Standoff, 2 pcs
- C. #6-32 x 3/4" Oval Head, Countersink Machine Screw, 2 pcs



### Features and Benefits:

- Configured to fit standard single gang outlet box
- Designed for commercial or residential applications
- Rugged and durable construction
- Provided with two mounting standoffs for wall mount telephone
- Offers a recessed face surface
- Accommodates a wide variety of easy to snap-in modules, providing configuration flexibility
- Accepts all IC107 modules
- Available in almond, black, ivory, and white
- UL listed

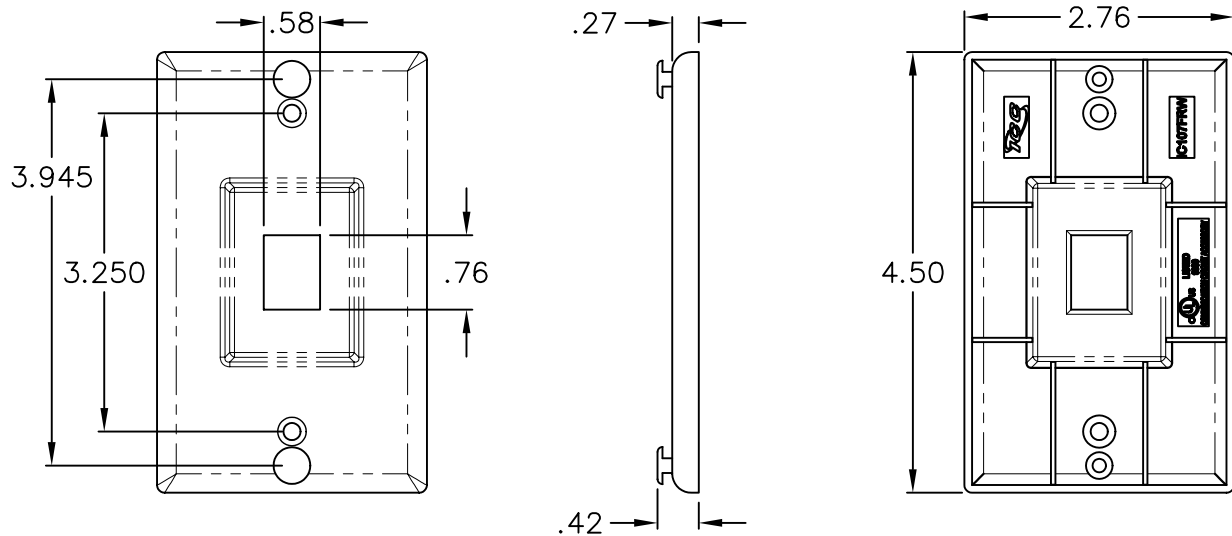


### WALL PLATE, PHONE, RECESSED, 1-PORT

ITEM NO.	IC107FRWXX	REV.	A
DWG NO.	PS107FRW00	PAGE NO.	1




CUSTOMER CARE / TECHNICAL SUPPORT \* CSR@ICC.COM / 888-ASK-4-ICC (275-4422) \* 14700 Alondra Blvd., La Mirada, CA 90638 \* [www.icc.com](http://www.icc.com)



**NOTE: UNLESS OTHERWISE SPECIFIED**

1. MATERIAL: ABS, UL 94V-0
2. FINISH: TEXTURE
3. COLOR: XX: AL-ALMOND, BK-BLACK, IV-IVORY, & WH-WHITE

UL US FILE NO. 125268

<b>WALL PLATE, PHONE, RECESSED, 1-PORT</b>				 <b>PremiumProducts</b> <b>ProvenPerformance</b> <b>CompetitivePrices</b>	
ITEM NO.	IC107FRWXX	REV.	A		
DWG NO.	PS107FRW00	PAGE NO.	2		

CUSTOMER CARE / TECHNICAL SUPPORT \* CSR@ICC.COM / 888-ASK-4-ICC (275-4422) \* 14700 Alondra Blvd., La Mirada, CA 90638 \* www.icc.com