

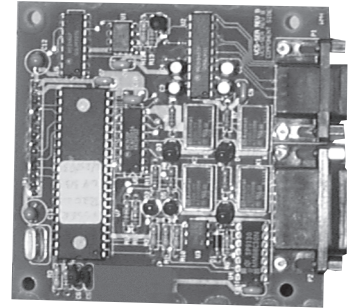
SERIAL CARD MODEL V-SER

FEATURES:

SMDR PRINTER OUTPUT

**PROVIDES DATA FOR V-DCH DIGITAL CLOCK HEAD END
OR V-DCPI DIGITAL CLOCK PROTOCOL INTERFACE**

PROVIDES CONTROL FOR THE V-CIO CLOCK RELAY BOARD



DESCRIPTION:

The V-SER plugs directly onto, and is powered through the Valcom MultiPath V-CPU4 card. It provides a serial port output for Station Message Detail Reporting (SMDR) and, when used with additional equipment, also provides interface to synchronize school clocks.

SPECIFICATIONS

POWER REQUIREMENTS:

Power provided by V-CPU4 Card

ENVIRONMENT:

-4 degrees to +131 degrees F (-20 to +55 C)

Humidity 0 to 95% Non-Condensing

DIMENSIONS AND WEIGHT

Dimensions 4.0" (10.16 cm) H x 3.6" (9.14 cm)L x 0.6"(1.52 cm) D

Weight:0.20 lbs (0.09 kg)



MultiPath is a registered Trademark of Valcom, Inc.

ARCHITECTS' AND ENGINEERS' SPECIFICATIONS MODEL V-SER SERIAL CARD

The serial card, model number V-SER, shall provide an SMDR printer output to the Valcom MultiPath Intercom. The SMDR data shall be available through an integrated male DB9 type connector. When used with additional equipment, the V-SER shall also provide for synchronization between the Valcom MultiPath and clocks.

Limited Warranty

Valcom, Inc. warrants its products to be free from defects in materials and workmanship under conditions of normal use and service for a period of one year from the date of shipment. The obligation under this warranty shall be limited to the replacement, repair or refund of any such defective device within the warranty period, provided that:

1. inspection by Valcom, Inc. indicates the validity of the claim,
2. the defect is not the result of damage, misuse, or negligence after the original shipment,
3. the product has not been in any way repaired by others and that factory sealed units are unopened.
(A service charge plus parts and labor will be applied to units defaced or physically damaged).
4. freight charges for the return of products to Valcom, Inc. are prepaid,
5. all units "out of warranty" are subject to a service charge. The service charge will cover minor repairs
(major repairs will be subject to additional charges for parts and labor).

This warranty is in lieu of and excludes all other warranties expressed or implied, and in no event shall Valcom, Inc. be liable for any anticipated profits, consequential damages, loss of time or other losses incurred by the buyer in connection with the purchase, operation or use of the product.

This warranty specifically excludes damage incurred in shipment. In the event a product is received in damaged condition, the carrier should be notified immediately. Claims for such damage should be filed with the carrier involved in accordance with the F.O.B. point.

