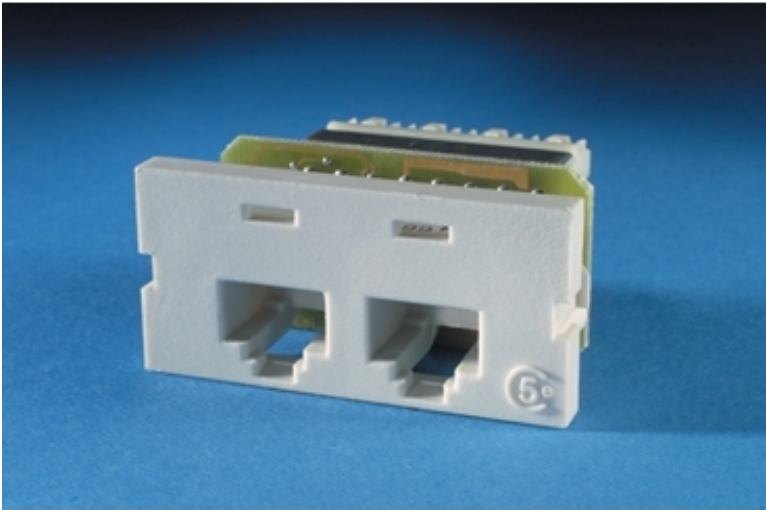


**Series II, two-port Category 5e, T568A, 180° - OR-60950012**

Series II, two-port Category 5e, T568A, 180°

**FEATURES**

- TIA/EIA Category 5e performance
- Linear 110 paired punch down
- Front removable
- Rugged snap-in design
- Icon compatible

**BENEFITS**

- Ensures installed link and channel performance
- Faster than other termination methods
- Less intrusive access for adds, moves, changes
- Quick and easy
- Supports TIA/EIA 606 standard

**Specifications****CONSTRUCTION INFO**

Component4:	Printed circuit board
Material3:	Phosphor bronze
Finish Plating3:	Nickel plating and tin lead over plate
Material2:	Phosphor bronze
Component1:	Plastic Series II Housing
Component2:	Array of eight linear modular contacts
Material1:	High Impact Thermoplastic ABS 94V-0
Component3:	IDC contacts, 110 D4
Material4:	Two-sided FR-4 epoxy resin/glass base with solder mask
Finish Plating2:	Nickel plating and a minimum of 50 micro inches of selective gold plating in contact area

**DIMENSION INFO**

Width U S:	1.90"
Depth Metric:	32.77 mm
Width Combined:	1.90" (48.26 mm)
Height Combined:	.92" (23.37 mm)
Depth U S:	1.29"
Depth Combined:	1.29" (32.77 mm)
Height Metric:	23.37 mm
Width Metric:	48.26 mm
Height U S:	.92"

**GENERAL INFO**

Category Performance Application:	Category 5e/UTP
Product Type Accessory:	Modular Jack
Number Of Ports:	2-port
Critical Size:	1 unit
Product Type Accessory For Filter:	Modular Jack
Color Filter:	Fog White
Footprint:	Series II

**SYSTEM ORIENTATION INFO**

Anixter Part Number:	148034
----------------------	--------

**TECHNICAL INFO**

Wire Gauge:	22-26 AWG
Category Rating:	Category 5e

