

Belden Electronics Division

Security Cable Solutions - New Gen Line

To insure optimum security installation performance, be sure to use Belden New Generation cables. This product line represents one of the largest, most economical and up-to-date selections of multiconductor and coaxial products on the market today: A full complement of cables for Access Control, CCTV, Computer Interconnect, Alarm, Fire Alarm and other security applications- complete with water-blocked options for installation in intermittently wet environments. New Gen offers installer friendly features:

- * Nec riser and plenum rated; UL and C (UL) listed as applicable.
- * Rip cords for easy jacket removal; sequential footage markings on the jacket to eliminate guesswork and waste.
- * A unique composite cable design, Access Control Banana Peel, Strips away installation time and labor.
- * Belden's unique quality and 10 year product warranty.

Access Control

Access Control - Banana Peel

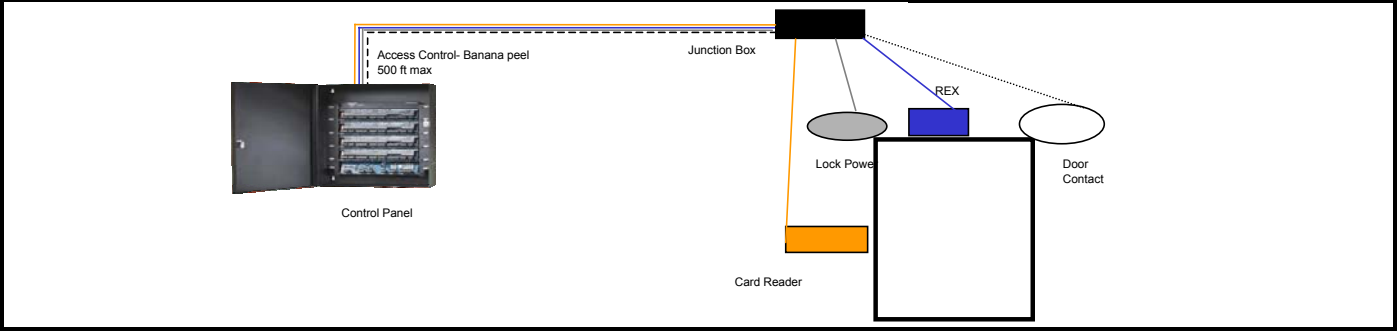
Description	Belden Part Number	
	Riser	Plenum
3 p / 22 Shielded + 4 c / 18 Shielded + 2 c / 22 Shielded + 4 c / 22 Shielded	558AFS	658AFS
3 p / 18 Shielded + 4 c / 16 Shielded + 2 c / 18 Shielded + 4 c / 18 Shielded	538AFS <small>New</small>	638AFS <small>New</small>

Access Control - Individuals

Description	Belden Part Number	
	Riser	Plenum
2 c / 22 AWG Stranded & Shielded	5500FE	6500FE
2 c / 22 AWG Stranded & Unshielded	5500UE	6500UE
2 p / 22 AWG Stranded & Shielded	5541FE	6541FE
2 p / 22 AWG Stranded & Unshielded	5541UE	6541UE
3 p / 22 AWG Stranded & Shielded	5542FE	6542FE
3 p / 22 AWG Stranded & Unshielded	5542UE	6542UE
2 p / 20 AWG Stranded & Shielded	5441FE	6441FE
2 c / 18 AWG Stranded & Shielded	5300FE	6300FE
2 c / 18 AWG Stranded & Unshielded	5300UE	6300UE
3 p / 18 AWG Stranded & Shielded	5342FE	6342FE
4 p / 18 AWG Stranded & Shielded	5343FE	6343FE
6 p / 18AWG Stranded & Shielded	5345FE	6345FE

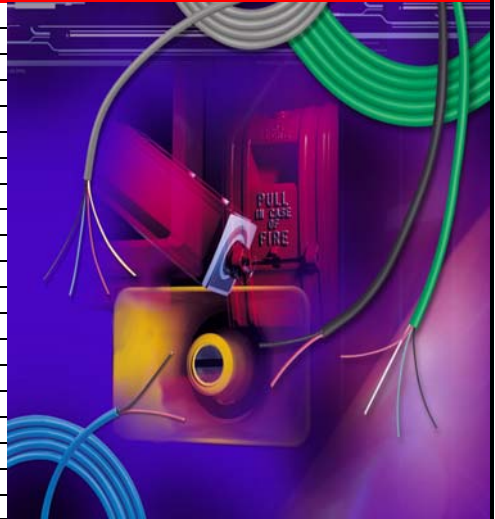


Banana Peel - 658AFS- Color Coding	
Lock Power (6302FE)	4 c / 18 AWG Shielded
Card Reader (6542FE)	3 p / 22 AWG Shielded
Door Contact (6500FE)	2 c / 22 AWG Shielded
Rex/Spare (6502FE)	4 c / 22 AWG Shielded



Burglar Alarm / Commercial Sound

Description	Belden Part Number	
	Riser	Plenum
2 c / 22 AWG Stranded & Unshielded	5500UE	6500UE
2 c / 22 AWG Stranded & Shielded	5500FE	6500FE
4 c / 22 AWG Stranded & Unshielded	5502UE	6502UE
4 c / 22 AWG Stranded & Shielded	5502FE	6502FE
6 c / 22 AWG Stranded & Unshielded	5504UE	6504UE
6 c / 22 AWG Stranded & Shielded	5504FE	6504FE
8 c / 22 AWG Stranded & Shielded	5506FE	6506FE
2 c / 18 AWG Stranded & Unshielded	5300UE	6300UE
2 c / 18 AWG Stranded & Shielded	5300FE	6300FE
3 c / 18 AWG Stranded & Shielded	5301FE	6301FE
4 c / 18 AWG Stranded & Unshielded	5302UE	6302UE
4 c / 18 AWG Stranded & Shielded	5302FE	6302FE
6 c / 18 AWG Stranded & Unshielded	5304UE	6304UE
6 c / 18 AWG Stranded & Shielded	5304FE	6304FE
2 c / 16 AWG Stranded & Unshielded	5200UE	6200UE
2 c / 16 AWG Stranded & Shielded	5200FE	6200FE
2 c / 14 AWG Stranded & Unshielded	5100UE	6100UE
2 c / 14 AWG Stranded & Shielded	5100FE	6100FE
2 c / 12 AWG Stranded & Unshielded	5000UE	6000UE
2 c / 12 AWG Stranded & Shielded	5000FE	6000FE



Fire Alarm Cables



Description	Belden Part Number	
	Riser	Plenum
2 c / 18 AWG unshielded (FPL)	5320UL	6320UL
2 c / 18 AWG shielded (FPL)	5320FL	6320FL
2 c / 16 AWG unshielded (FPL)	5220UL	6220UL
2 c / 16 AWG shielded (FPL)	5220FL	6220FL
2 c / 14 AWG unshielded (FPL)	5120UL	6120UL
2 c / 14 AWG shielded (FPL)	5120FL	6120FL
2 c / 12 AWG unshielded (FPL)	5020UL	6020UL
2 c / 12 AWG shielded (FPL)	5020FL	6020FL



Surveillance / CCTV

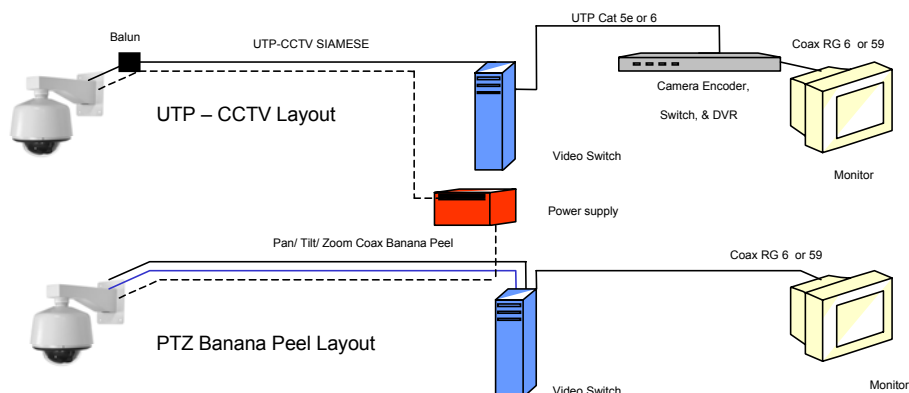
Coaxes for CCTV

Description	Belden Part Number	
	CM	Plenum
Mini RG-59 (25 AWG) + 2 c/20 AWG (Siamese)	579945 <small>New</small>	679948 <small>New</small>
RG-59/U Coax (20 AWG Solid, 95% Bare Copper)	543945	643948
RG-59 + 2 c/18 AWG (Siamese)	549945	649948
RG-6/U Coax (18 AWG, Duofoil + 60% Alum)	5339B5	633938
RG-6 Coax (18 AWG, Quad Shield)	5339Q5	6339Q8
RG-6/U Coax (18 AWG Solid, 95% Bare Copper)	533945	633948
RG-6/U + 2c/18 AWG (Siamese)	539945	639948
RG-11/U Coax (14 AWG , 95% Bare Copper)	513945	613948



UTP - CCTV

Description	Belden Part Number	
	Riser	Plenum
2 p / 23AWG UTP cat 5e + 1 p / 16 AWG unshielded (Siamese)	5284US <small>New</small>	6284US <small>New</small>
2 p / 23AWG UTP cat 5e + 1 p / 16 AWG unshielded (Round)	5284UE <small>New</small>	6284UE <small>New</small>
4 p / 23AWG UTP cat 5e + 1 p / 16 AWG unshielded (Siamese)	5288US <small>New</small>	6288US <small>New</small>



Pan/Tilt/Zoom Banana Peel Coax

Description	Belden Part Number		Camera Manufacturer
	Riser	Plenum	
RG 59 + 2 c / 18AWG unshielded + 1 p / 23AWG UTP (Cat 5e type)	500PTZ <small>New</small>	600PTZ <small>New</small>	Sony, Toshiba, GE Interlogix
RG 59 + 2 c / 18AWG unshielded + 1 p / 22AWG STP (8761 type)	501PTZ <small>New</small>	601PTZ <small>New</small>	Pelco, American Dynamics
RG 59 + 2 c / 18AWG unshielded + 1 p / 18 AWG STP (8760 type)	502PTZ <small>New</small>	602PTZ <small>New</small>	Bosch, American Dynamics

Always use cables recommended by Camera Manufacturers. Check their recommended Control and Power configurations

Networking and CCTV on UTP

UTP Category Rated UTP

Description	Belden Part Number	
	Riser	Plenum
4 p / 24 AWG UTP Cat 5e (Unbonded)	1583A	1585A
4 p / 24 AWG UTP Cat 5e (Unbonded)	1500A	1501A
4 p / 24 AWG UTP Cat 5e (Bonded)	1700A	1701A
4 p / 23 AWG UTP Cat 6 (Unbonded)	7881A	7882A
4p / 23 AWG UTP Cat 6 (Bonded)	1872A	1874A
4 p / 23 AWG UTP Cat 6 (Bonded & e-spline)	7851A	7852A

