

Mighty Mo® 6



ADVANCED CABLE MANAGEMENT



Mighty Mo® 6 Cable Management System

The complete cable management system for maximum network performance

The right cable management system can have an enormous impact on network performance and economy. Mighty Mo® cable management systems provide the strength, support, and flexibility that begins with system design, and continues through years of moves, adds, and changes. Ortronics/Legrand builds all of its structured cabling experience into every Mighty Mo 6 system.

Different by design

Most cable management systems look and function the same way. The Mighty Mo 6 is not most cable management systems. Its design recognizes that patch cords and horizontal cable require different management. Using patented Ortronics rear channels, Might Mo 6 securely routes distribution cables. In addition, its vertical management "cage" protects patch cords while allowing easy access.

Mighty Mo 6 is designed specifically for higher density cabling systems such as large premise networks, data centers, and SANs. All racks are easy to assemble on-site and offer versatile configuration options, extra vertical cable capacity, and other functional and aesthetic features, all designed to reduce shipping and installation costs, and increase network life.

See the differences.
See the advantages.

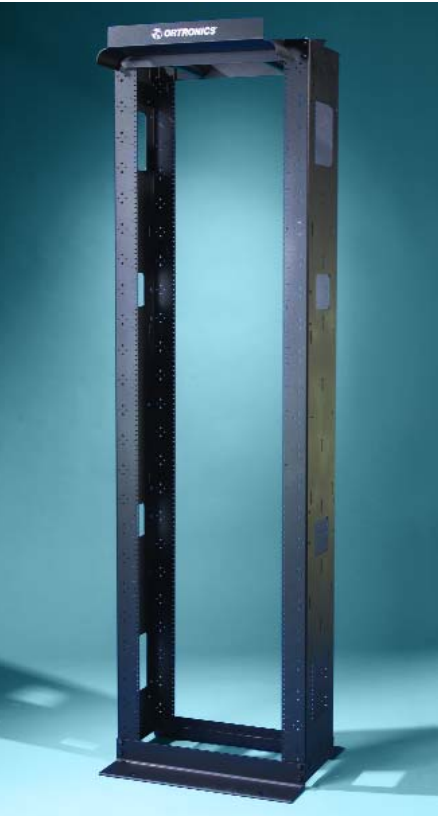
- ▶ **Innovative design** Vertical management cages with individual 1-rack-unit fingers and double-hinged door
- ▶ **Improved organization** Covered horizontal cable managers with fingers designed to organize patch cords vertically and horizontally. Top trough with built-in waterfall for bend radius control and efficient patch cable routing
- ▶ **Enhanced durability** Durable black powder coat finish to minimize fingerprints and reduce scratches
- ▶ **Easy assembly** Speednuts for reduced assembly time



Mighty Mo Speednut

Mighty Mo 6 speednuts increase speed and ease of assembly while adding additional strength to Mighty Mo systems. They also eliminate the need for a second wrench during system assembly. To use, hold the speednut behind the rack while you hand tighten bolts in front. Finish tightening with a wrench and your Mighty Mo 6 is ready to load.

Cable Management Racks



OR-MM6710

Mighty Mo® 6
Cable Management Racks

Mighty Mo® 6 racks are available in 10.5" and 16.25" channel depths. The 16.25" size is designed specifically for large and heavy network equipment. The bottom flange on the 16.25" standard rack turns inward, allowing it to fit on a 2' x 2' tile floor. Mighty Mo 6 standard racks have a load rating of 1500 lbs per UL 1863 testing requirements.

Description	Part No.
10.5" channel depth, 7' high, 45 rack units	OR-MM6710
16.25" channel depth, 7' high, 45 rack units	OR-MM6716
10.5" channel depth, 8' high, 51 rack units	OR-MM6810
16.25" channel depth, 8' high, 51 rack units	OR-MM6816

Patent No. Des. 360,169

All Mighty Mo 6 racks and accessories are black.



OR-MM67SVR

Mighty Mo 6 Server Rack

The Mighty Mo 6 server rack is fully compatible with all Mighty Mo 6 racks and cable management systems. The mounting rails adjust from 6" to 32", independent of structural members, to allow rail adjustment after rack installation.

Description	Part No.
Four-post frame, 7' high, 45 rack units	OR-MM67SVR



OR-MM6716S

Mighty Mo 6 Seismic Rack

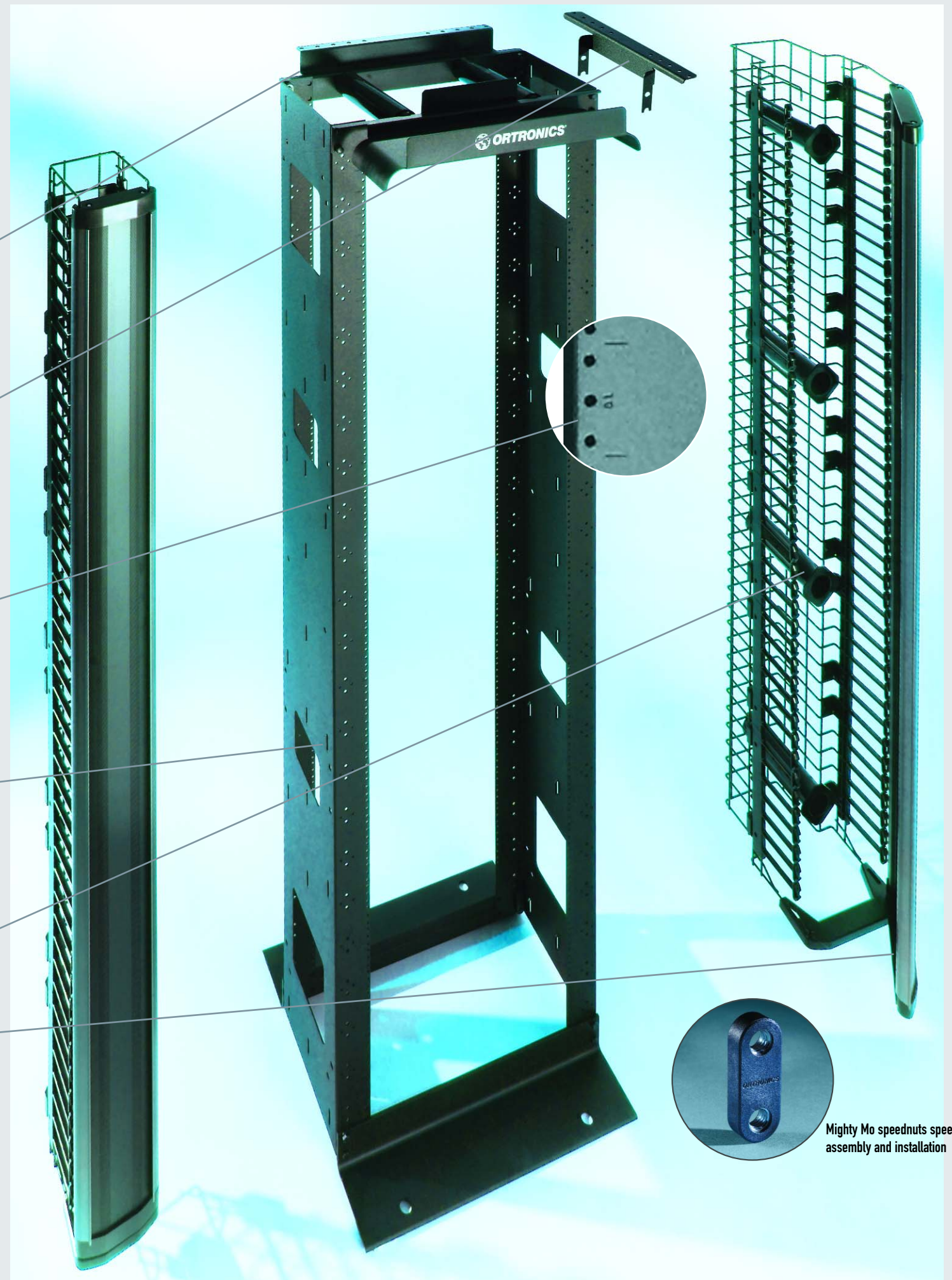
Seismic Mighty Mo 6 racks are the first ever "knock-down" design featuring the patent pending "ski boot" frame that combines maximum rigidity with ease of installation, shipping and handling. Both seismic racks provide a Zone 4 rating compliant to Telcordia GR-63-CORE with a load rating of 510 lbs.

Description	Part No.
Seismic, 10.5" channel depth, 7' high, 45 rack units	OR-MM6710S
Seismic, 16.25" channel depth, 7' high, 45 rack units	OR-MM6716S

Mighty Mo® 6 Advanced Cable Management— Different by Design

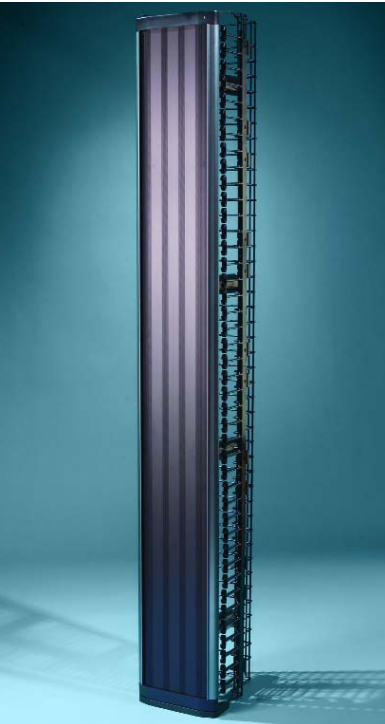
Mighty Mo 6 standard features

- ▶ Rear ladder rack flange accepts 6" to 18" ladder rack
- ▶ Bend-limiting channel posts protect distribution cable
- ▶ Patch/horizontal cable separator organizes and protects
- ▶ Built-in waterfall with room for 160 Category 6 patch cords
- ▶ Cable runway bracket attaches 6" to 18" ladder racking to side of rack
- ▶ 7' rack provides 45 rack units each, front and back
- ▶ 8' rack provides 51 rack units each, front and back
- ▶ Rack spaces are stamped every unit, numbered every fifth unit
- ▶ Each 10.5" channel holds 288 Category 6 cables, 576 distribution cables per rack
- ▶ Each 16.25" channel holds 480 Category 6 cables, 960 distribution cables per rack
- ▶ Racks now equipped with three rows of hook and loop tie-off points and 24-18" cable straps
- ▶ 6" wide vertical management cage accommodates up to 200 Category 6 patch cords
- ▶ 10" wide vertical management cage holds up to 584 Category 6 patch cords
- ▶ Four slack storage spools included with every vertical manager with doors. The 10" cage allows front or back mounting to separate copper and fiber
- ▶ Extruded-aluminum front door features full length latches; open the door to the right or left with a simple twist
- ▶ Mighty Mo 6 racks assemble as a 19" or 23" rack without additional hardware



Mighty Mo speednuts speed
assembly and installation

Vertical Cable Management



OR-MM6VMD710

Mighty Mo® 6 Vertical Cable Management Cage with Door

Cage design promotes efficient routing of patch or cross connect cables between racks. Hinged doors allow easy access during moves, adds, or changes. 10" wide cage creates a 6.5" gap between racks. 6" wide cage creates a 2.5" gap between racks for front-to-back routing of equipment cables and patch cords. Both cages are supplied with four spools and 12 bend-limiting clips.

Description	Part No.
10" x 13" x 7'	OR-MM6VMD710
6" x 8" x 7'	OR-MM6VMD706
10" x 13" x 8'	OR-MM6VMD810
6" x 8" x 8'	OR-MM6VMD806

Note: All cable managers include hardware necessary to mount the cage on the face of two Mighty Mo 6 racks. The 6" wide model contains gusset brackets and is recommended for a single rack or end of a row.



OR-MM6BLC

Mighty Mo 6 Bend Limiting Clip

Snaps on to any finger on the vertical management cage to provide bend limitation for fiber jumpers that enter or exit cage. Supplied in sets of 12.

Description	Part No.
3.25" long for vertical cable management cages with door	OR-MM6BLC



OR-MM6CMS8

Mighty Mo 6 Vertical Cable Management Spools

Manage excess copper or fiber cable slack effectively. Mounted at rack unit intervals, spools provide flexibility and proper bend radii for cables.

Description	Part No.
8" long spool for 10" vertical cable management cage with door	OR-MM6CMS8
6" long spool for 6" vertical cable management cage with door	OR-MM6CMS6



OR-MM6CAK

Mighty Mo 6 Concrete Anchor Kit

Set of 4 12-mm expansion bolts, washers, and 1 installation tool.

Description	Part No.
Concrete Anchor Kit	OR-MM6CAK



OR-MM6VML706

Mighty Mo 6 Vertical Cable Management Cage with Latches

Patented design promotes efficient routing of patch or cross connect cables between racks. Hinged latches allow easy access during moves, adds, and changes. Cage creates 2.5" gap between racks for front-to-back routing of equipment cables and patch cords.

Description	Part No.
6" x 6" x 7'	OR-MM6VML706
6" x 6" x 8'	OR-MM6VML806

Note: Includes all hardware necessary to mount cage on face of two Mighty Mo 6 racks, single rack or end of row.

Patent No. 6,365,834

Product dimensions are listed by width, depth, and height unless otherwise specified.

Accessories



OR-MM6EP710

Mighty Mo 6 End Panel

Visually finishes the end of a row of Mighty Mo 6 racks.

Description	Part No.
For 7' rack with 10.5" channel	OR-MM6EP710
For 7' rack with 16.25" channel	OR-MM6EP716
For 8' rack with 10.5" channel	OR-MM6EP810
For 8' rack with 16.25" channel	OR-MM6EP816

Note: Includes mounting hardware



OR-MM6BTS

Mighty Mo 6 Seismic Base Trough

Mounts to the front of the base and provides a horizontal path for cables.

Description	Part No.
Base trough for seismic racks	OR-MM6BTS



OR-MM6BDC10

Mighty Mo® 6 Base Dust Cover

Prevents dust and debris from accumulating in rack base. Scored for bending to clear cables from floor up to channel.

Description	Part No.
For 10.5" channel standard rack	OR-MM6BDC10
For 16.25" channel standard rack	OR-MM6BDC16
For 10.5" channel seismic rack	OR-MM6BDC10S
For 16.25" channel seismic rack	OR-MM6BDC16S

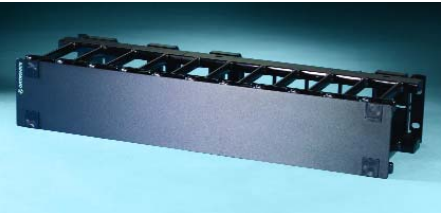


OR-MM6CEK10

Mighty Mo 6 Ceiling Extension Kit

Mounts on top of Mighty Mo 6 racks to extend one channel 24". Cover hides cables. Kit includes one extender and cover.

Description	Part No.
For 10.5" channel rack	OR-MM6CEK10
For 16.25" channel rack	OR-MM6CEK16



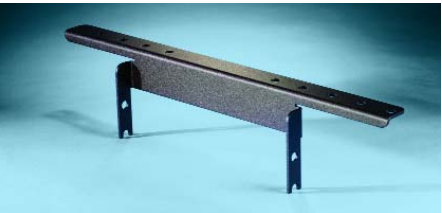
OR-MM6HMF2RU

Mighty Mo 6 Horizontal Cable Management Panels with Covers

Organizes patch cords vertically and horizontally on Mighty Mo 6 racks. Finger design encourages defined, traceable routing of individual patch cords.

Description	Part No.
Multiple fingers, 1 RU	OR-MM6HMF1RU
Multiple fingers, 2 RU	OR-MM6HMF2RU
6 port finger spacing, 1 RU	OR-MM6HM61RU
6 port finger spacing, 2 RU	OR-MM6HM62RU
8 port finger spacing, 1 RU	OR-MM6HM81RU
8 port finger spacing, 2 RU	OR-MM6HM82RU

Note: Includes mounting hardware



OR-MM6CRB10

Mighty Mo 6 Cable Runway Mounting Bracket

Mounts to top of either 10.5" or 16.25" Mighty Mo 6 channel, or to top of Mighty Mo 6 server rack. Mounting location for 6"-18" ladder racking on the side.

Description	Part No.
For 10.5" channel rack	OR-MM6CRB10
For 16.25" channel rack	OR-MM6CRB16
For server rack	OR-MM6CRBSVR



125 Eugene O'Neill Drive
 New London, CT 06320
 800-934-5432
 860-445-3900 (sales)
 860-405-2992 (fax)
www.ortronics.com