



HUBBELL NextSpeed Ascent 10GbE Jacks

10GbE Application Assurance.
Maximum Bandwidth Beyond
625MHz
Component Compliant ANEXT
Performance.
PoE and PoE+ Ready.

FEATURES

- Category 6a ANEXT component compliant.
- Angled IDC towers provide separation for ANEXT suppression.
- High performance BeCu contacts.
- IDC pair splitting tower allows for minimum disruption to cable twist.
- Backward compatible to Category 6, 5e, 5 and 3.

SPECIFICATIONS

Mechanical

Construction Materials

- ◆ Housing: High impact thermoplastic (UL 94V-0).
- ◆ Stuffer cap: Lexan (UL 94V-0).
- ◆ Dust cover: Polypropylene.

Nose Contacts

- ◆ Contact material: Beryllium copper.
- ◆ Mating cycles 2,000+.
- ◆ Accepts FCC 6-position plugs.

IDC 110 Contacts

- ◆ Material: Phosphor bronze with 100 micro-inch tin lead 60/40 plating over nickel under plating.
- ◆ Accommodates 22 to 26 AWG/solid.

STANDARDS/LISTINGS/VERIFICATIONS

- ANSI/TIA-568-B.2-10*.
- IEEE 802.3af (PoE) and IEEE 802.3at (PoE+).
- Exceeds IEEE 802.3an 10GBASE-T link segment requirements.
- IEEE 802.3an 10-Gigabit Ethernet verified.
- 3rd party verified.
- UL Listed 1863.
- FCC part 68.5, subpart F compliant.
- ISO/IEC compliant 60603-7.
- ISO 11801 (Second edition) Class E Compliant.

* Proposed draft.

Industry's Fastest
Terminating Jack.

Angled towers for
ANEXT suppression and
jack-to-jack pair
separation.

Easy lacing.



Back-to-front contact
design controls NEXT.

PCB technology.

1-Punch termination.

NEXTSPEED® Ascent 10GbE is a tuned system of structured cabling components designed and center balanced to work together. **NEXTSPEED®** Ascent 10GbE delivers headroom beyond 625MHz. In addition, **NEXTSPEED®** Ascent 10GbE's state-of-the-art transmission performance and designed ANEXT suppression techniques provide the highest level of reliability in the industry.

The HXJ6A jack's resilient Beryllium copper contacts deliver an added degree of protection that will withstand thousands of insertions and deliver high performance both electrically and mechanically. The HXJ6A is PoE (Power over Ethernet) rated, assuring a reliable connection allowing continuous power over time without degradation.

NEXTSPEED® Ascent 10GbE jacks easily install into all HPW **INFINESTATION™** products including rear-loading plates, front-loading modules and frames.

APPLICATIONS SUPPORTED

- ▲ Data centers 10GbE between devices:
 - Server to switch.
 - Server to server.
 - Server to storage.
- ▲ High-performance cable applications.
 - Active zone cabling.
 - Distributed cabling.
- ▲ PoE Applications
 - WAP's.
 - Security Appliances.
 - VoIP.
- ▲ Bandwidth intensive processing:
 - Video on demand (VOD).
 - Real-time security surveillance.
 - High-resolution 3D modeling.
 - On-line document publishing.
 - Broadband video.

ORDERING INFORMATION

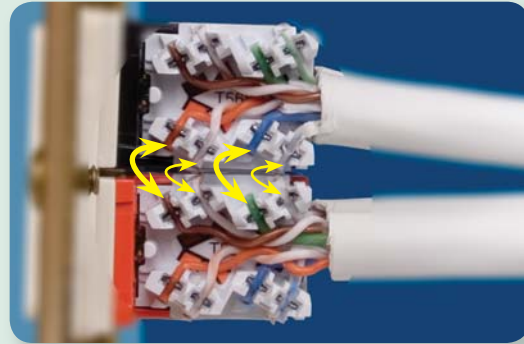
NEXTSPEED® Ascent 10GbE Jacks

Unit Package:	1 per Bag	
Order Qty.:	Carton of 25	
Color	Wiring	Catalog No.
Black	Universal	HXJ6ABK
Blue	Universal	HXJ6AB
Gray	Universal	HXJ6AGY
Office White	Universal	HXJ6AOW
Orange	Universal	HXJ6AOR
White	Universal	HXJ6AW



ANEXT Suppression

ANEXT Alien Crosstalk - Coupled signal on a cable/port arising from signal or signals from different neighboring cables/ports.



Jack IDC's were designed to isolate each pair and eliminate ANEXT when terminated side-by-side.

ACCESSORIES

NEXTSPEED® Ascent 10GbE Patch Panels



NEXTSPEED® Ascent 10GbE patch panels are available in silver and black, 24-, 48-, and 96-ports and are supplied with labeling for T568B wiring. Panels can be converted to T568A with a simple flip of the universal wiring label.

Delivery: 1 patch panel, 1 universal wiring insert, clear plastic label holders and mounting hardware.

Ports	Height	Width	Color	Catalog No.
24	1.75" (45)	19" (483)	Black	P6A24U
48	3.50" (89)	19" (483)	Black	P6A48U
96	7.00" (178)	19" (483)	Black	P6A96U
24	1.75" (45)	19" (483)	Silver	P6A24US
48	3.50" (89)	19" (483)	Silver	P6A48US
96	7.00" (178)	19" (483)	Silver	P6A96US

NEXTSPEED® Ascent 10GbE Patch Cords

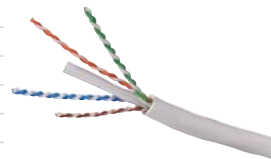


The NEXTSPEED® The Ascent 10GbE patch cords are constructed with specially designed patch cable and an assembly procedure delivering the industry's highest performing patch cord. Incorporated into the design, is a conductor sled optimizing performance, controlling NEXT and separating pairs providing a consistent contact-to-conductor alignment during termination.

Color: Gray. Catalog No. **PC6AGYXX**
XX = Length: **'03'** = 3', **'05'** = 5', **'07'** = 7', **'10'** = 10', **'15'** = 15', **'20'** = 20'.

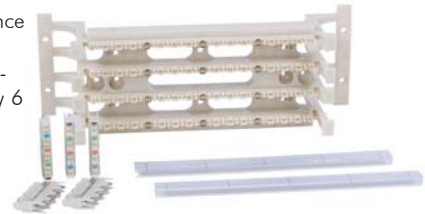
NEXTSPEED® Ascent 10GbE, 4-Pair, UTP Cable

Color	Catalog No. Riser Spool	Catalog No. Plenum Spool
Blue	C6ASRB	C6ASPB
Gray	C6ASRGY	C6ASPGY
White	C6ASRW	C6ASPW
Yellow	C6ASRY	C6ASPY



6-110 Block Kit

The perfect high-performance consolidation point, the 6-110 system delivers component compliant Category 6 performance.



Description*	Catalog No.
64-Pair Kit with legs and 16 connecting blocks*	6110FTK64WL
64-Pair Kit w/o legs and 16 connecting blocks*	6110FTK64NL
192-Pair Kit with legs and 64 connecting blocks*	6110FTK192WL

* 6-110, 4-pair connecting blocks



Hubbell Premise Wiring

HUBBELL INCORPORATED (Delaware)
 14 Lord's Hill Road • Stonington, CT 06378-0901 • (860) 535-8326 • 800-626-0005
 Fax: (860) 535-8328 • Internet site: <http://www.hubbell-premise.com>

Worldwide Locations

Hubbell Premise Wiring, Asia Pacific	852-2836-7131	Fax: 852-2836-7132
Hubbell Canada Inc.	905-839-1138	Fax: 905-839-9108
Hubbell Premise Wiring, Central America	506-309-4158	Fax: 506-260-1616
Hubbell Premise Wiring, China	8621-6309-0119	Fax: 8621-6309-0122
Hubbell Premise Wiring, Colombia	571-245-8940	Fax: 571-340-0925
Hubbell Premise Wiring, Europe	44-01283 500500	Fax: 44-01283 500400
Hubbell Int'l. Inc., Korea Branch	82-2-(0)2607-1363	Fax: 82-2-(0)2603-7386

Hubbell Premise Wiring, Latin America	305-408-4501	Fax: 305-408-8201
Hubbell de Mexico, S.A. de C.V.	(5255) 9151-9999	Fax: (5255) 9151-9989
Hubbell Premise Wiring, Middle East	971-4-393-4192	Fax: 971-4-393-4194
Hubbell-Taian Co., Ltd., Taiwan	886-2-2522-1862	Fax: 886-2-2522-1872
Hubbell Premise Wiring, Turkey	90-216-313-5016	Fax: 90-216-414-8148
Hubbell Premise Wiring, Venezuela	58-416-680-7453	Fax: 58-281-274-7900