

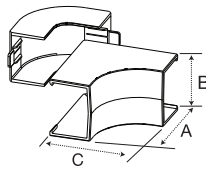


Catalog Number

Fittings

Internal Elbow

Full capacity 1¼ in. bend radius internal elbow.



Cover Only

PL1IE
 A: 2.51" (63.75)
 B: 1.57" (39.88)
 C: 2.51" (63.75)

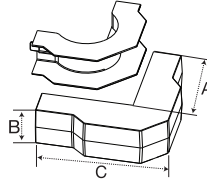
Base & Cover

PL1IEBC
 A: 2.51" (63.75)
 B: 1.57" (39.88)
 C: 2.51" (63.75)

Office
 White

External Elbow

Full capacity 1¼ in. bend radius external elbow.



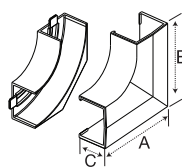
PL1EE
 A: 5.06" (128.52)
 B: 1.57" (39.88)
 C: 5.06" (128.52)

PL1EEBC
 A: 5.06" (128.52)
 B: 1.57" (39.88)
 C: 5.06" (128.52)

Office
 White

Flat Elbow

Full capacity 1¼ in. bend radius flat elbow.



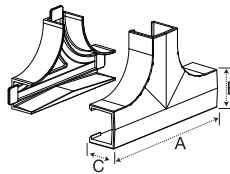
PL1FE
 A: 3.19" (81.03)
 B: 3.19" (81.03)
 C: 1.11" (28.19)

PL1FEBC
 A: 3.19" (81.03)
 B: 3.19" (81.03)
 C: 1.11" (28.19)

Office
 White

Tee

Full capacity 1¼ in. bend radius tee.



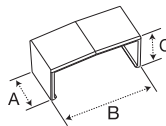
PL1TC
 A: 4.75" (120.65)
 B: 3.15" (80.01)
 C: 1.11" (28.19)

PL1TCBC
 A: 4.75" (120.65)
 B: 3.15" (80.01)
 C: 1.11" (28.19)

Office
 White

Splice Cover

For covering potential openings where two lengths of raceway come together.

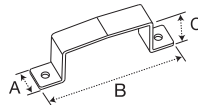


PL1SC
 A: 1.12" (28.45)
 B: 1.55" (39.37)
 C: 1.11" (28.19)

Office
 White

Safety Strap

For preventing potential tampering with PL1 LANTrak cover. Can also be used as a splice cover.

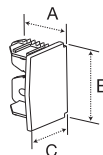


PL1SS
 A: 0.62" (15.75)
 B: 2.68" (68.07)
 C: 1.12" (28.45)

Office
 White

End Cap

For closing end of raceway.

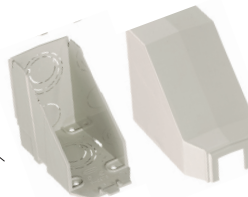
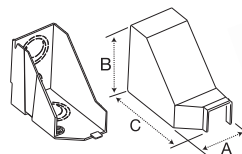


PL1EC
 A: 1.00" (25.40)
 B: 1.39" (35.31)
 C: 1.04" (26.42)

Office
 White

Conduit Adapter/Ceiling Fitting

For connecting conduit to raceway. Also use for ceiling feeds. Has combination ½ in., ¾ in. and 1 in. trade size KOs.



PLP1CACF
 A: 2.29" (58.17)
 B: 3.31" (84.07)
 C: 3.90" (99.06)

Office
 White