

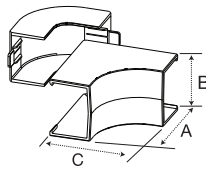


Catalog Number

**Fittings**

**Internal Elbow**

Full capacity 1¼ in. bend radius internal elbow.



**Cover Only**

**PL1IE**  
 A: 2.51" (63.75)  
 B: 1.57" (39.88)  
 C: 2.51" (63.75)

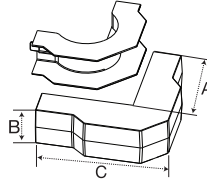
**Base & Cover**

**PL1IEBC**  
 A: 2.51" (63.75)  
 B: 1.57" (39.88)  
 C: 2.51" (63.75)

Office  
White

**External Elbow**

Full capacity 1¼ in. bend radius external elbow.



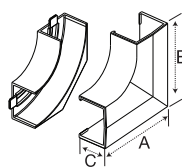
**PL1EE**  
 A: 5.06" (128.52)  
 B: 1.57" (39.88)  
 C: 5.06" (128.52)

**PL1EEBC**  
 A: 5.06" (128.52)  
 B: 1.57" (39.88)  
 C: 5.06" (128.52)

Office  
White

**Flat Elbow**

Full capacity 1¼ in. bend radius flat elbow.



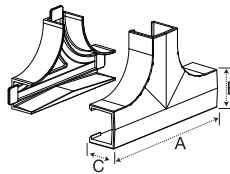
**PL1FE**  
 A: 3.19" (81.03)  
 B: 3.19" (81.03)  
 C: 1.11" (28.19)

**PL1FEBC**  
 A: 3.19" (81.03)  
 B: 3.19" (81.03)  
 C: 1.11" (28.19)

Office  
White

**Tee**

Full capacity 1¼ in. bend radius tee.



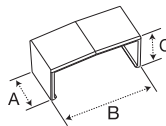
**PL1TC**  
 A: 4.75" (120.65)  
 B: 3.15" (80.01)  
 C: 1.11" (28.19)

**PL1TCBC**  
 A: 4.75" (120.65)  
 B: 3.15" (80.01)  
 C: 1.11" (28.19)

Office  
White

**Splice Cover**

For covering potential openings where two lengths of raceway come together.

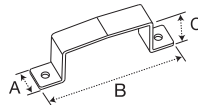


**PL1SC**  
 A: 1.12" (28.45)  
 B: 1.55" (39.37)  
 C: 1.11" (28.19)

Office  
White

**Safety Strap**

For preventing potential tampering with PL1 LANTrak cover. Can also be used as a splice cover.

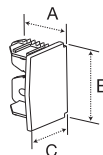


**PL1SS**  
 A: 0.62" (15.75)  
 B: 2.68" (68.07)  
 C: 1.12" (28.45)

Office  
White

**End Cap**

For closing end of raceway.

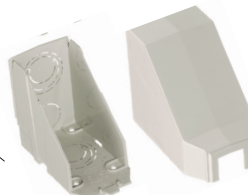
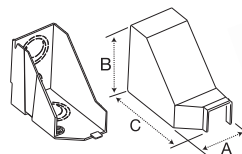


**PL1EC**  
 A: 1.00" (25.40)  
 B: 1.39" (35.31)  
 C: 1.04" (26.42)

Office  
White

**Conduit Adapter/Ceiling Fitting**

For connecting conduit to raceway. Also use for ceiling feeds. Has combination ½ in., ¾ in. and 1 in. trade size KOs.



**PLP1CACF**  
 A: 2.29" (58.17)  
 B: 3.31" (84.07)  
 C: 3.90" (99.06)

Office  
White