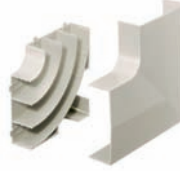
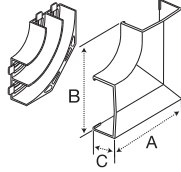


Catalog Number

Fittings

Cover Only    Base & Cover    Color

**Flat Elbow**  
Full capacity 1¼ in. bend radius flat elbow.

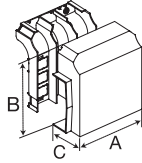


**PS3FE**  
A: 9.85" (250.19)  
B: 9.85" (250.19)  
C: 2.08" (52.83)

**PS3FEBC**  
A: 9.85" (250.19)  
B: 9.85" (250.19)  
C: 2.08" (52.83)

Office  
White

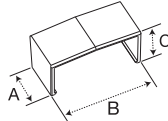
**Tee**  
Full capacity 1¼ in. bend radius tee.



**PS3TCBC**  
A: 10.00" (254.00)  
B: 9.68" (245.87)  
C: 3.30" (83.82)

Office  
White

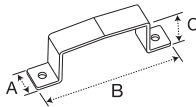
**Splice Cover**  
For covering potential openings where two lengths of raceway come together.



**PS3SC**  
A: 1.56" (39.62)  
B: 6.95" (176.53)  
C: 2.03" (51.62)

Office  
White

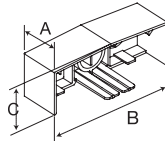
**Safety Strap**  
Prevents potential tampering with PS3 Super BaseTrak cover. Can also be used as a splice cover.



**PS3SS**  
A: 1.50" (38.10)  
B: 8.24" (209.30)  
C: 2.08" (52.85)

Office  
White

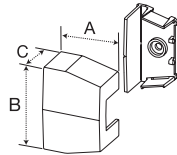
**End Cap**  
For closing end of PS3 Super BaseTrak Raceway.



**PS3EC**  
A: 1.50" (38.10)  
B: 6.88" (174.75)  
C: 2.06" (52.32)

Office  
White

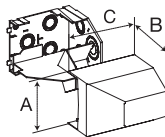
**Reducer**  
Reduces from PS3 Super BaseTrak Raceway to PB3 BaseTrak Raceway.



**PS3RED**  
A: 4.81" (122.17)  
B: 6.93" (176.02)  
C: 2.05" (52.07)

Office  
White

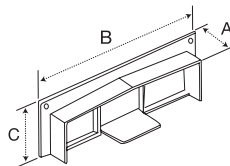
**Conduit Adapter/Ceiling Fitting**  
For connecting conduit to raceway. Also use for ceiling feeds. Has combination ½ in., ¾ in., 1 in., 1¼ in. and 1½ in. trade size KOs.



**PS3CACF**  
A: 6.93" (176.02)  
B: 4.32" (109.73)  
C: 6.29" (159.77)

Office  
White

**Surface Panel Connector**  
To connect PS3 Raceway with surface type panel boxes.



**PS3SPC**  
A: 1.00" (25.40)  
B: 7.87" (199.90)  
C: 2.54" (64.52)

Office  
White

